

# T3DAQ1-16 Fact Sheet

## Data Acquisition System

### Broad Measurement Range

**DC: up to 1000 Volts**

**AC: up to 750 Volts**

**Current: up to 10 A**



### Key Specifications

Specification	Scanner	Front Panel Connector
Number of Channels	12 Multi-Purpose and 4 Current Channels	1 Multi-Purpose channel
DC/AC Voltage Range	200 mV to 200 V	200 mV to 1000 V
DC/AC Current Range	2 A fixed	200 $\mu$ A to 10 A
2/4 Wire Resistance Range	200 $\Omega$ to 100 M $\Omega$	

### Tools for Improved Debugging

- **16 Multi-purpose Data Acquisition Channels** built on a 6½ digit digital multimeter platform.
  - ✓ More flexible measurements without losing accuracy.
- **Wide range of measurements** – DC/AC Voltage and Current, Resistance, Capacitance, Frequency, Period.
  - ✓ More application coverage from a single system.
- **True-RMS measurements** – All AC Voltage and Current ranges give True-RMS readings.
  - ✓ Excellent accuracy regardless of the waveform shape.
- **Built-in cold terminal thermocouple compensation.**
  - ✓ Accurate Temperature measurements.
- **USB Device, USB Host and LAN support.**
  - ✓ Remote control your measurements.
- **3 Years Warranty as standard.**
  - ✓ Reliable product gives peace of mind.

For more information, please contact:



# T3DAQ1-16 Fact Sheet

## Data Acquisition System



### Features

- 4.3" TFT-LCD Display
- Dual display, Chinese and English Menu
- Built-in front panel accessible help system
- File management (support for U-disc and local storage)
- Real 6-5 digit (2,200,000 count) readings resolution
- 1 GB flash memory for mass storage configuration files and data files

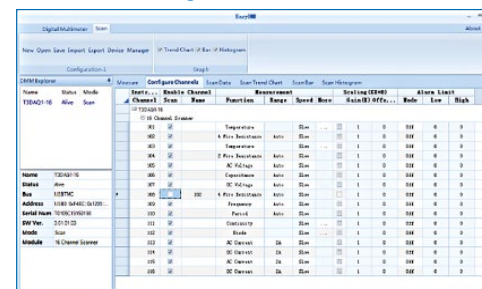
### Smart Capabilities as Standard

- In addition to DCV, DCI, ACV, ACI, 2/4 Wire Ohms the T3DAQ range can also measure Capacitance, Frequency, Period, Temperature, Diode Test and Continuity.
- True RMS ACV and ACI measurements improve AC measurement accuracy.
- Temperature support for TC and RTD sensors with built-in cold terminal compensation.
- Remote control via USB or LAN connection.

### EasyDMM Software

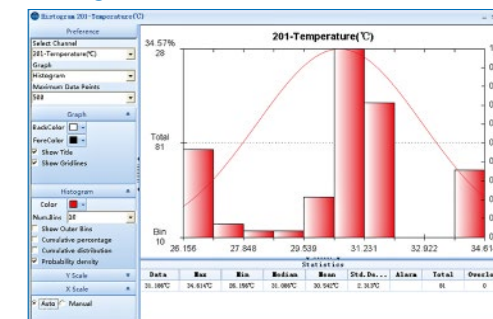
The T3DAQ can be remotely operated by the EasyDMM software. The software provides user friendly graphical interface to operate the DAQ.

### Channel Configuration



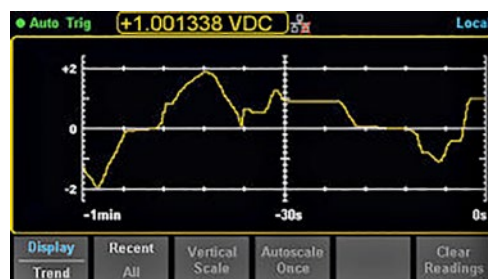
Configure Channels menu in the Scan mode can be used to enable channels as well as to configure various settings such as measurement function, range, speed of measurement. Channels can also be monitored within the defined limits by using Alarm Limit feature.

### Histogram

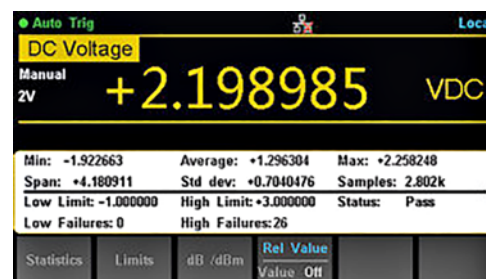


To view the scanned data visually, the software has Trend Chart, Histogram and Bar graph. All the graphs also has user customizable options such as colour, axis scales, type of curve etc.

### Built-in 6½ multimeter for quick measurements



Trend Chart mode shows how the data changes over time in a value versus time strip chart display.



Statistics mode quantifies the data being captured while the Pass/Fail mode can quickly test, and instantly indicate if there is a problem.



Histogram display mode shows how the data is distributed across a range of user defined Bin values.



Bar Meter display mode adds a horizontal bar meter below the numerical display giving an analog indication of the measured value.