

PathWave Lab Operations for Remote Learning, PW9112EDU

An IMS Global Certified LTI Learning Tool

Purpose-built, secured remote teaching and learning solution for real instrument access and control, anytime and anywhere

The Megatrend of Remote Learning

Online learning has been a part of many educational institutions since the spread of the Internet. Now, new norms such as social distancing and limits on face-to-face interaction are dramatically accelerating the shift from traditional in-building learning to virtual classes offered remotely on digital platforms. The availability of online courses opens opportunities to international and distance learning students, and remote learning offers students the flexibility of learning anytime, anywhere. With these benefits, online learning is expanding exponentially, and educational institutes must rapidly transform to keep pace with this megatrend.

PATHWAVE

What's the definition of Remote Learning?

In simple terms, remote learning is the process of teaching and learning performed at a distance. The student and the educator, or information source, are not physically present in a traditional classroom environment.



Table of Contents

The Megatrend of Remote Learning.....	1
What Makes Remote Teaching and Learning Challenges?	3
Challenges for University	3
Challenges for the educators/lecturers/lab managers	3
Keysight’s Industry-ready Remote Access Lab Solution	4
End-to-end Remote Instrument Lab Solution Overview	4
PathWave Lab Operations for Remote Learning (PW9112EDU)	5
Key Features	6
Cloud-based remote lab access.....	6
Schedule and Manage Your Remote Lab Session	7
Manage Your Users.....	9
Manage Your Benches	9
Intuitive Live Chat.....	10
Secure File Transfer	10
Remote desktop control, configure and measure.....	11
Integrate Learning Management System (LMS)	7
On Premises Solution	11
PathWave Lab Operations for Remote Learning at A Glance	12
System Installation	12
System Specification and Requirements	12
Ordering Guide and Information.....	13
PW9112EDU – License Types and Terms	13
Further Information	13

What Makes Remote Teaching and Learning Challenges?

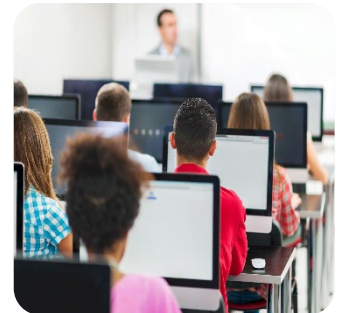
If you would have asked most of the educators last year or even before about the terms “remote learning”, you will probably receive perplexed or even pessimistic responses. However, over the past few months, with the pandemic hit, the landscape of remote learning had changed in the blink of an eye. Most of the educators and students are dealing with new learning methods which have indeed important and have lasting impact.

Challenges for University

One of the unique course structures of an engineering program is the live, hands-on laboratory and design experience. People could start questioning, “How do accrediting organizations assess an online program to determine if the graduate has acquired knowledge and skills sufficient to begin professional practice at the entry-level?”. If students don’t receive a similar quality or experience of learning as they would on-campus, they may be less competitive upon graduation.

Hence, of vital interest to engineering (and to any practice-oriented profession), it is important for the universities to ensure that shifting to online teaching and remote learning does not scarify the education quality and align to accreditation requirements.

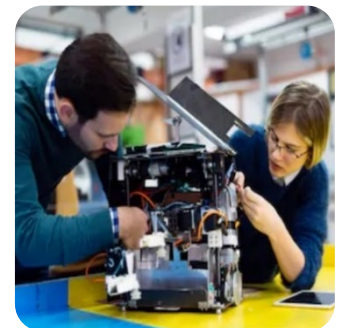
So, if the educational institution doesn’t include remote learning, relatively they may not be competitive in the student enrollment. In a broader view, enrollment and student employability after graduation can impact university ranking.



Challenges for the educators/lecturers/lab managers

Ideally, we hope to achieve the goal whereby both the educator and student could have the most effective remote learning attempts which is a mirror to the classroom environment as much as possible virtually when the student and educator are in two different places. However, the fact is that traditional lesson plans do not always translate digitally.

Making the jump online presents many challenges to educators, especially if you are responsible for engineering courses whose lab sessions hinges on hands-on measurement and testing. Not only does converting your conventional teaching lab to remote learning require time, this had eventually taken up substantial efforts of the educator on the preparation of learning materials and potentially requires a new system to allow remote instrument control and scheduling, you must also ensure that your students receive quality learning similar to the in-person experience they would receive in an on-site lab.



Keysight's Industry-ready Remote Access Lab Solution

Keysight's industry-ready remote access lab solution offers you a convenient way to make the switch to online learning. This end-to-end solution is designed for the complete remote setup of your basic instrument lab and covers your needs from cloud-based lab management and scheduling administration to instrument control and remote access for measurement and analysis. With your students continued working with industry-grade test and measurement instruments and software, they will gain similar practical skills and application knowledge as industry engineers conducting their work in the lab today.

End-to-end Remote Instrument Lab Solution Overview

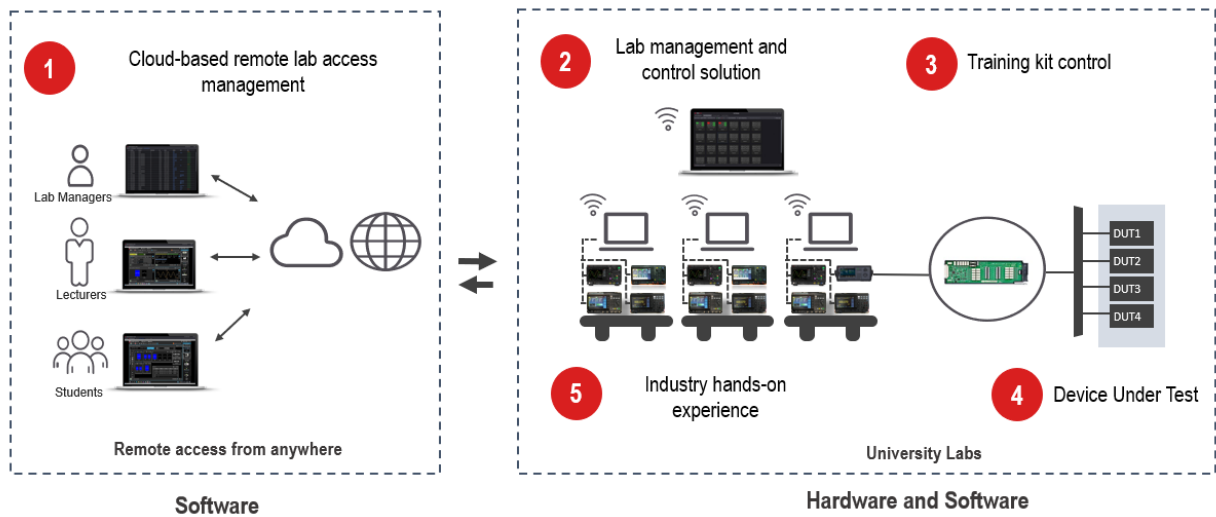


Figure 1. Keysight Industry-ready Remote Access Lab Solution

1. Secured cloud-based remote lab scheduling and session booking
2. Centralized lab configuration, and multi-bench lab setup and control
3. Remotely switch between different training kits or measurement points during a lab session
4. Any DUT (University's own DUT or U3810REM Keysight Remote Advanced IoT Training Kit)
5. Access industry-graded instruments

PathWave Lab Operations for Remote Learning (PW9112EDU)

PathWave Lab Operations for Remote Learning is a cloud-based remote access application software. Key benefits include:

1. **Easily and seamlessly migrate engineering labs online faster**

The end-to-end solution offers all the elements needed to transform traditional classroom teaching and hands-on labs into a remote environment

2. **Hassle free and centralized user access and teaching content management system**

LMS integration enables the educators and learners to navigate seamlessly to university resources, creating a smooth, consistent, and better teaching-learning experience

3. **Equip students for success in the industry**

Connect to industry-grade test and measurement instruments and utilize the same software and technology they'll use in their careers

4. **Interaction with students and facilitate group collaboration in real-time to accomplish smart teaching and learning**

Multi-user access allows students, educators and lab administrators to access the lab through any internet-connected device anytime, anywhere

5. **Streamline and simplify lab management, saving lab administrators and educators time and freeing them to focus on teaching**

Centralized control for educators to seamlessly connect to, manage, monitor, and troubleshoot all the instruments within a lab

Key Features

Cloud-based remote lab access

By specifying and setup the configured URL to your university or institution, you can access and launch the PathWave Lab Operations for Remote Learning Application software through the web browser at any time and from anywhere in a secured environment. Keysight PathWave Lab Operations for Remote Learning Application software is built on secured Amazon's AWS infrastructure. The software has the built-in Single Sign-On (SSO) and Multi-Factor Authentication (MFA) security options that you can set up easily and the data transfer is encrypted with TLS and AES.

The software supports standard 10 benches setup which allows up to 50 concurrent users access. Additional licenses can be purchased to enable more benches setup and access.

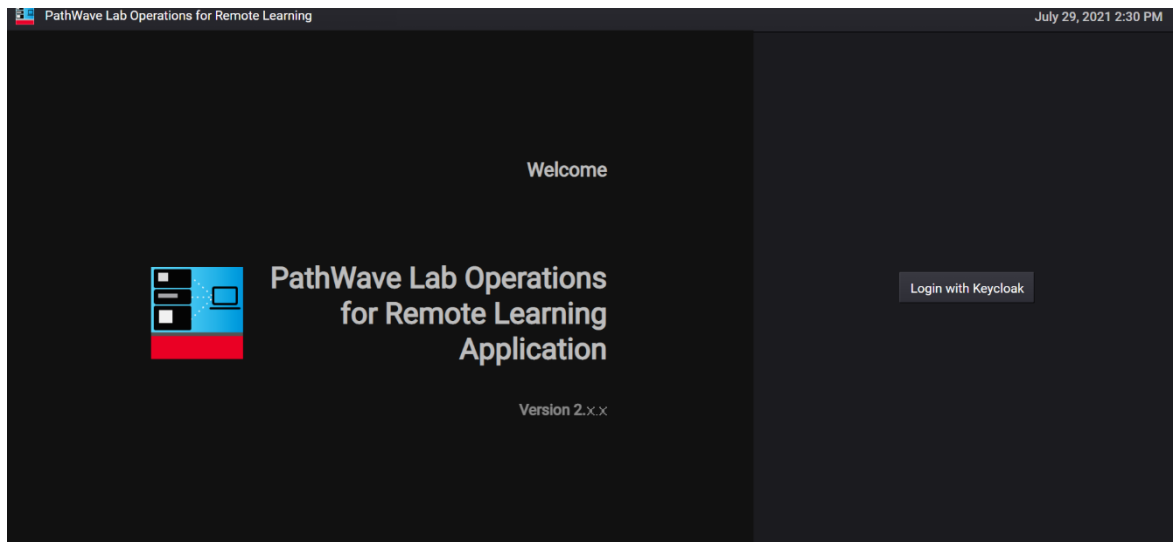


Figure 2. PathWave Lab Operations for Remote Learning Application

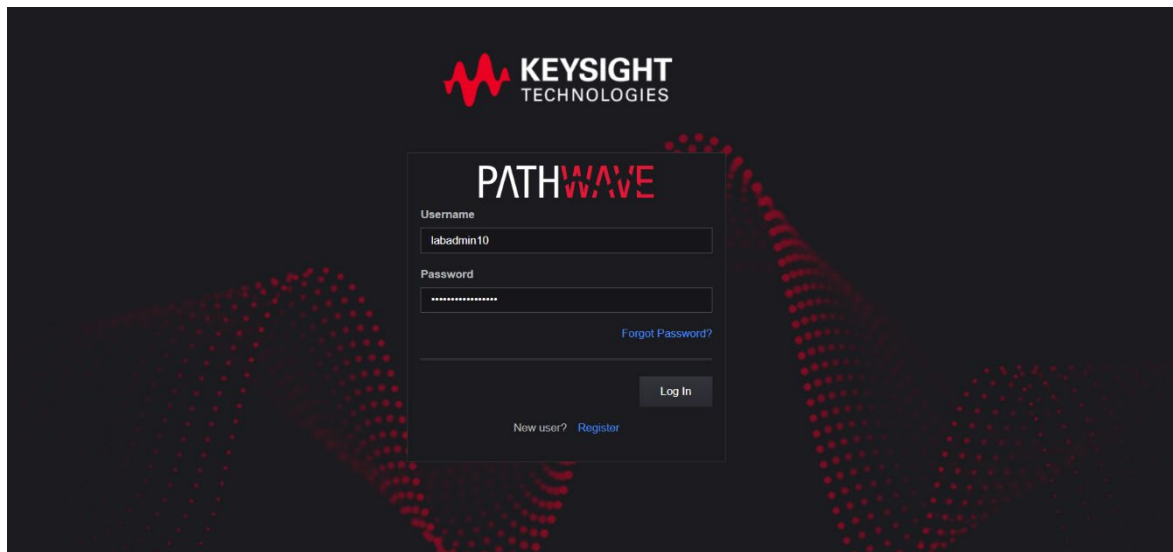


Figure 3. Registration and login

Integrate Learning Management System (LMS)

In addition to SSO and MFA, with the Learning Tool Interoperability (LTI) feature built-in, you can easily plug-and-play PathWave Lab Operations for Remote Learning application software into your LMS. Ensuring educational technology tools are IMS Global certified is the best way to establish a plug-and-play ecosystem. Students can navigate seamlessly from your LMS to PathWave Lab Operations for Remote Learning application software without having to log in separately. Your teaching curriculum can also be easily designed to include remote lab capability.

Keysight PathWave Lab Operations for Remote Learning application software constitutionally supports Learning Management System (LMS) such as Moodle, Blackboard, Canvas, and others.



Click to find out more on Keysight PathWave Lab Operations for Remote Learning as an IMS Global certified LTI learning tool.

<https://site.imsglobal.org/certifications/keysight-technologies/pathwave-lab-operations-for-remote-learning>

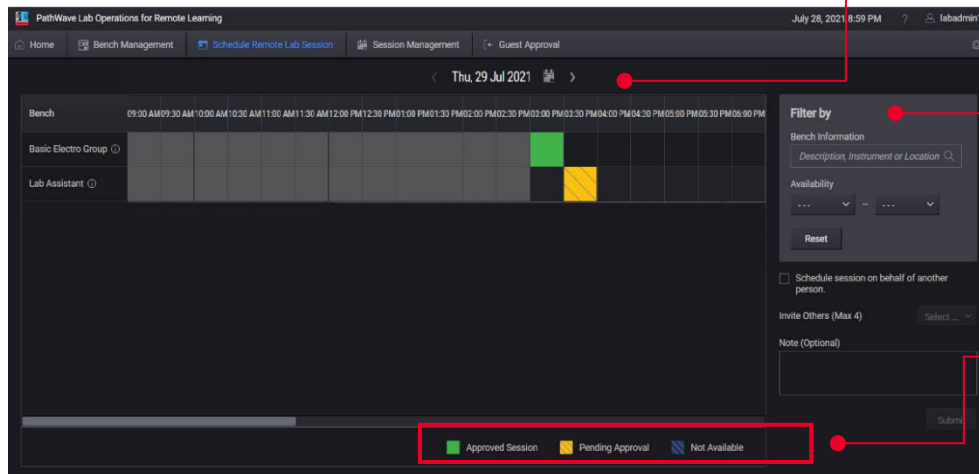
Schedule and manage your remote lab session

Empowers the students, lecturers, and lab admins to self-service schedule and book the lab session to use the lab resources. Having everyone on the same page to make the scheduling helps to eliminate the inefficiency and assured conflict prevention. The user is also allowed to extend the remote lab session 15 minutes before the session end.

Admin can create email notifications to improve and smoothen the overall session management experience. Users will get informed about the changes to the scheduled lab session.

Please refer to the user getting started guide for more detail on email settings.

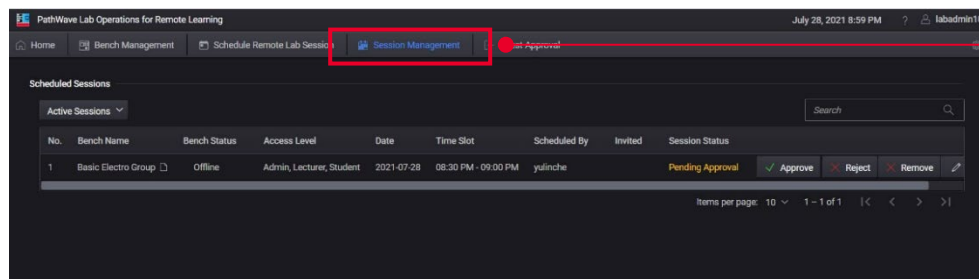
Set the date and month of your lab session. Click the Calendar icon to show the dates of each month



List of benches available for the remote lab session

Legend to identify the time slots available

Figure 4. Students to book the lab sessions at preferred date and time



View the status and manage the scheduled sessions

Figure 5. Administrator to view, approve or reject the scheduled lab sessions

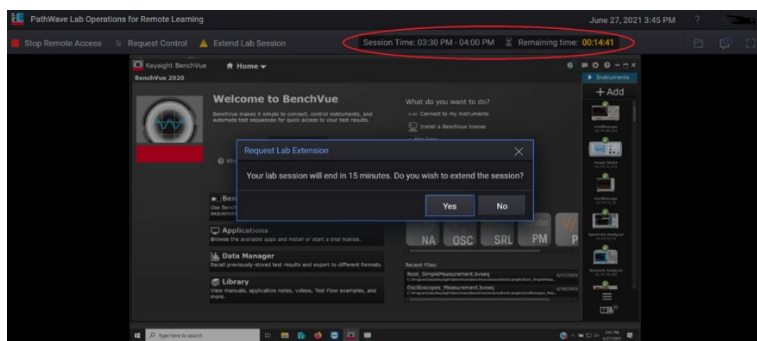


Figure 6. Extend remote session notification

Manage your users

The guest approval features provide the freedom to decide how the user interacts with the software. With the tagging features, it allows the administrator to assign each registered user to different roles and student groups to personalize the access permission.

If the students access the software through the university LMS, the role will automatically be obtained from LMS.

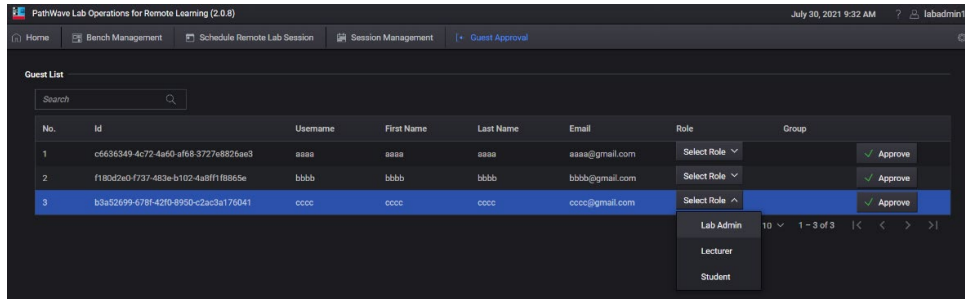


Figure 7. Assign role

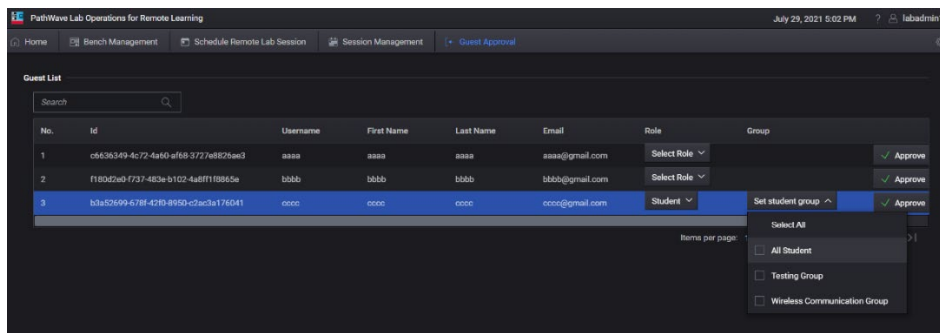


Figure 8. Assign student's group

Manage your benches

Precisely control how the students use the lab resources is important. The bench management feature allows the administrator to have the option to Edit or Remove the bench access level and student's group for each test bench. The administrator is also able to assign the bench accordingly to a selected group of students. This way, students can access certain bench to use lab resources accordingly to the course enrolled. This will also help to increase the speed of managing for the administrator.

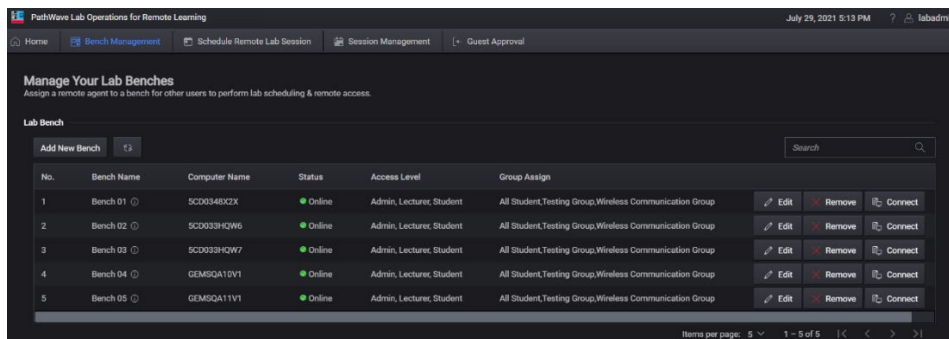


Figure 9: Student's bench grouping

Intuitive live chat

Keeping students engaged digitally is important as it facilitated group collaboration in real-time to achieve the smart teaching-learning goals. With the chat box function, the users can send and receive messages in the same space during the remote access session.

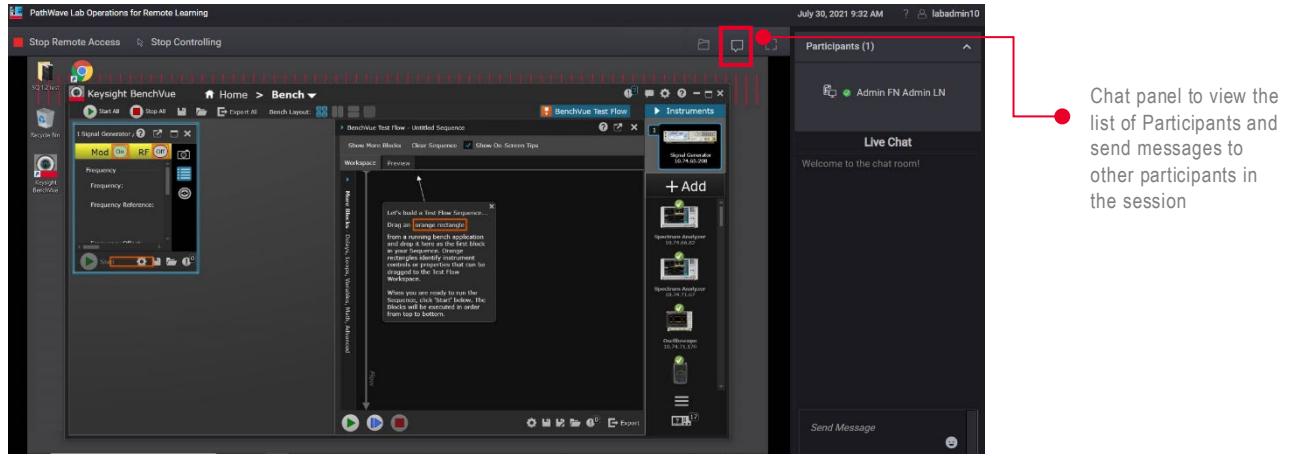


Figure 10. Chat box

Secure file transfer

To achieve collaborative learning, a secure file transfer interface is required to enable the seamless exchange of data. With the file transfer function, it allows users to conveniently transfer files during remote lab sessions.

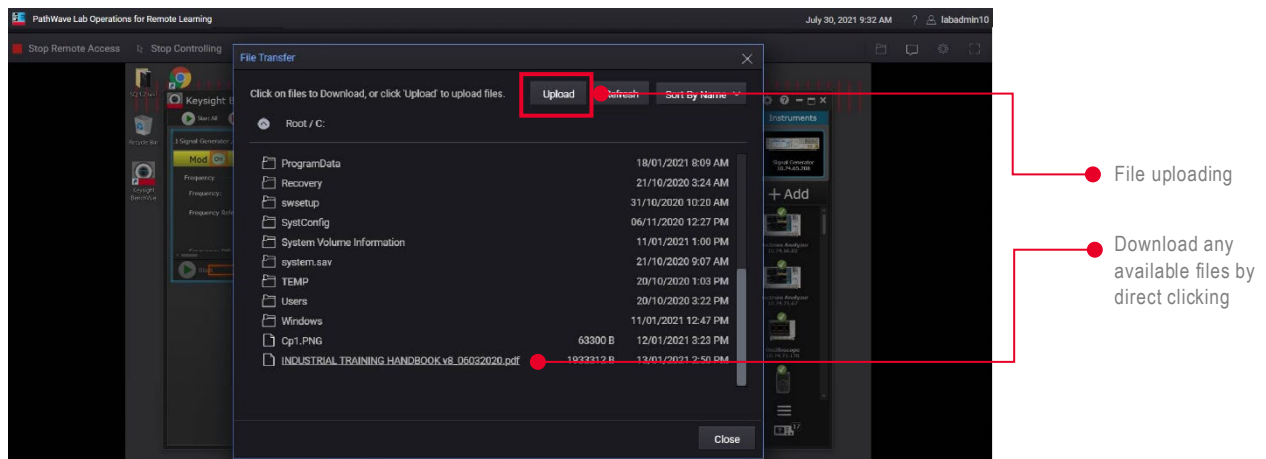


Figure 11. File transfer

Remote desktop control, configure and measure

In a virtual lab, it is important to ensure the students gained the same learning experience remotely versus physical on-site lab experience. With the login into PathWave Lab Operations for Remote Learning application software, students can remotely access the lab bench PC. Students can view the lists of the instruments available and connect to the bench and begins the remote lab session control. Maximum 5 students' access is allowed on the same lab bench for interaction while control is limited to one user at a time.

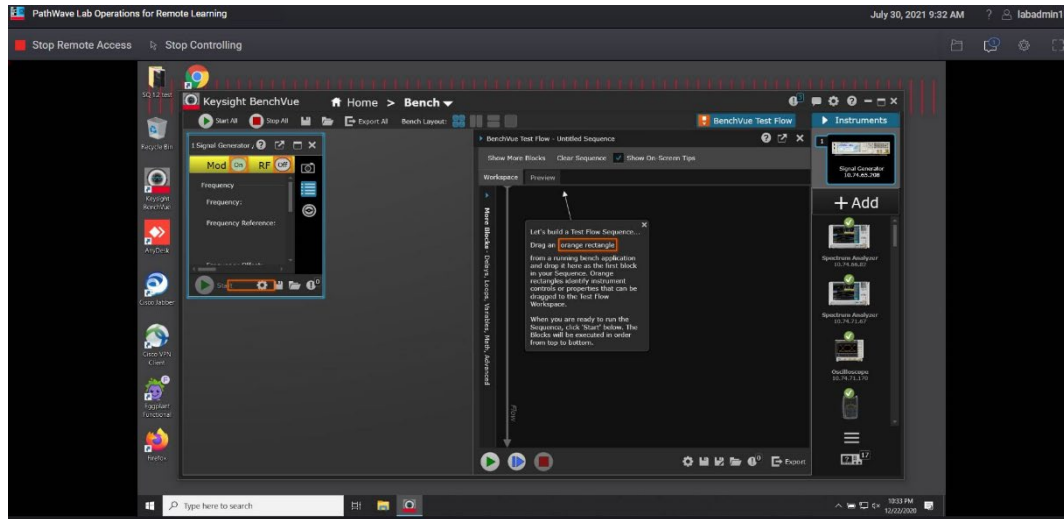


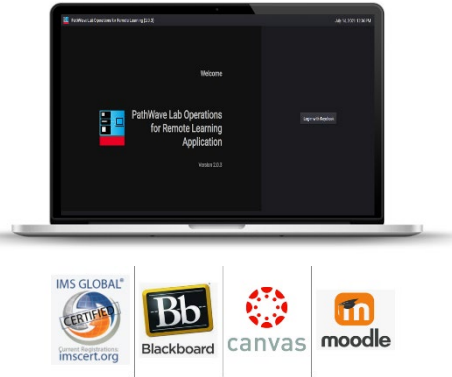
Figure 12. Bench setup and control

On-Premises solution

Make use of your existing universities infrastructure to deploy Keysight PathWave Lab Operations for Remote Learning application software. For more information about On-Premises support, please contact Keysight at: [On-Premises Request](#).

PathWave Lab Operations for Remote Learning at A Glance

What It Offers:	
For Educators	<ul style="list-style-type: none"> To plug-and-play external tool into existing universities LMS To manage student lab access, maintain lab benches systematically and monitor multiple remote lab sessions
For Students	<ul style="list-style-type: none"> To navigate seamlessly to university resources with single access To remotely access lab setup and perform collaborative lab work through a web browser



System Installation

Students: Need no installation

University: Agent file installation for remote bench setup

System Specification and Requirements

The following are the minimum requirements for a PC to be used with the PW9112EDU solution.

Operating system	Windows 10 Enterprise with Internet access
CPU	Intel Core i3 or better, minimum 2 GHz.
Internet speed	Standard-definition video streaming: 4 Mbps minimum
Supported web browsers	Google Chrome and Firefox

Ordering Guide and Information

Model number	Description
PW9112EDU	PathWave Lab Operations for Remote Learning

PW9112EDU – License Types and Terms

Software subscription license	
R-X4Y-002-L	12 months, floating (single site) subscription license
R-X4Y-002-X	24 months, floating (single site) subscription license
R-X4Y-002-Y	36 months, floating (single site) subscription license

Further Information

Please visit our solution page for more information www.keysight.com/find/PW9112EDU

Learn more at: www.keysight.com

For more information on Keysight Technologies' products, applications or services, please contact your local Keysight office. The complete list is available at: www.keysight.com/find/contactus

