

JBC

www.jbctools.com

INSTRUCTION MANUAL



P105

Pedal for NAST & NANT Stations

This manual corresponds to the following references:

P-105

Packing List

The following items are included:



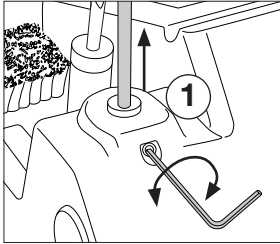
Pedal1 unit

Manual 1 unit
Ref. 0028919

Connection to NAST / NANT (Nano Soldering Station)

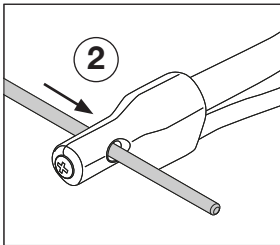


Assembly

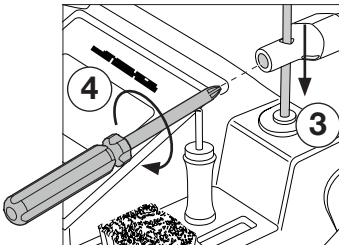


Disassemble the tool holder from the station with a 1,5mm allen key (1).

It is not necessary to completely loosen the screw. Just enough to release the tool holder.

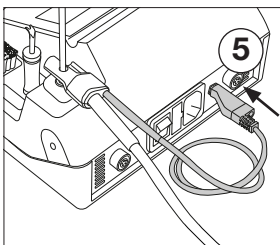


Insert the tool holder (2) by its bottom side through the connection.



Reassemble the tool holder (3) and fasten the locking screw with the allen key (1).

Adjust the position of the connection and lock it against the tool holder by fastening the screw (4).



Plug in the pedal connector (5) to the equipotential connector at the back side of the station.

Specifications

P105

Pedal for NAST & NANT Stations

Ref. P-105

- Cable length: 1.9 m / 74.80 in
- Total Net weight: 457 g / 1.01 lb

- Total Package Dimension / Weight: 382 x 159 x 81 mm / 602 g
(L x W x H) 15.04 x 6.26 x 3.19 in / 1.33 lb

Complies with CE standards

ESD safe

JBC

Warranty

JBC's 2 year warranty covers this equipment against all manufacturing defects, including the replacement of defective parts and labour.

Warranty does not cover product wear or misuse.

In order for the warranty to be valid, equipment must be returned, postage paid, to the dealer where it was purchased.



This product should not be thrown in the garbage.

In accordance with the European directive 2012/19/EU, electronic equipment at the end of its life must be collected and returned to an authorized recycling facility.



www.jbctools.com