

JBC

www.jbctools.com

INSTRUCTION MANUAL



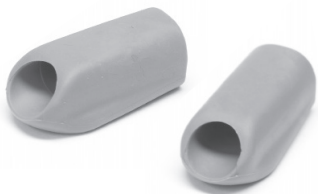
NP105 Sleeves

Ref. N1738

Packing list

NP105 Sleeves 1 unit
Ref. N1738

It contains 2 sleeves



Manual 1 unit
Ref. 0012091



Features

The sleeves for NP105 suit the position of user's fingers in order to provide a greater control of tool.



Specifications

- Weight: 17 g
- Dimensions: 16 x 38 mm

Complies with CE standards.
ESD protected housing "skin effect".

JBC

Warranty

JBC's 2 year warranty covers this device against all manufacturing defects, including the replacement of defective parts and labour.

Warranty does not cover product wear due to use or mis-use.

In order for the warranty to be valid, equipment must be returned, postage paid, to the dealer where it was purchased.



This product should not be thrown in the garbage. In accordance with the European directive 2002/96/EC, electronic equipment at the end of their life must be collected and returned to an authorized recycling facility.