

JBC

www.jbctools.com

INSTRUCTION MANUAL



CLM

Manual Tip Cleaner

This manual corresponds to the following reference:

CL8499

Packing list

The following items are included:



Sponge1 unit
Ref. S0354



Brass Wool1 unit
Ref. CL6210



Manual Tip Cleaner 1 unit
Ref. CL8499

Manual 1 unit
Ref. 0028694

Features

Select the option to suit your needs and improve the thermal transfer of the tip.

Brass Wool
Ref. CL6210

Very effective cleaning method. It leaves a small layer of solder on the tip to prevent oxidation between cleaning and reflowing.

Splashguard
Ref. 0017576

It prevents splashing of solder particles when using the brass wool.

Antisplash Membrane
Ref. CL7882

Prevents splashing and keeps the work area clean.

ESD Safe Tip Wiper
Ref. CL8010

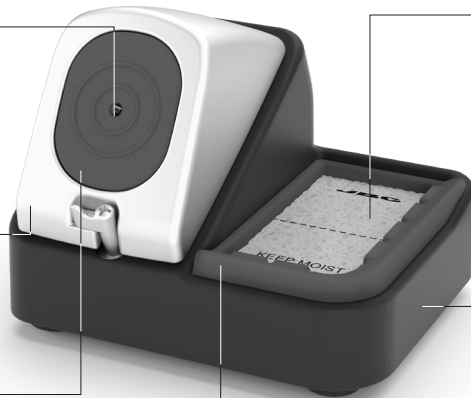
A temperature resistant receptacle lets the operator remove excess solder by gentle tapping or wiping.

Sponge
Ref. S0354

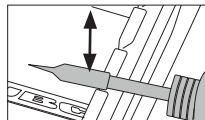
The least harmful cleaning method. Keep the sponge damp with distilled water when working to avoid tip wear.

Non-Slip Base

No need to hold the base while cleaning tips.

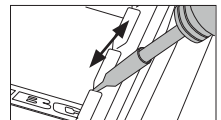


Tapping:



Tap to remove excess solder.

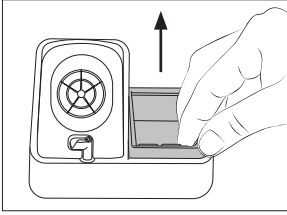
Wiping:



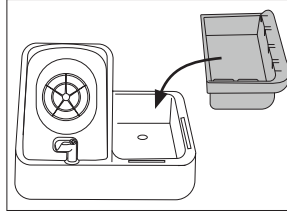
Use the slots to remove remaining particles.

If the tip is very dirty, JBC recommends first cleaning it with the wiper to remove excess solder and then with the brass wool.

Wiper Replacement

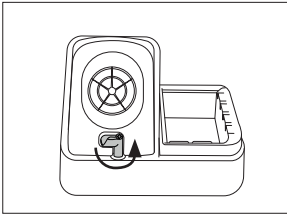


First pull the wiper out.

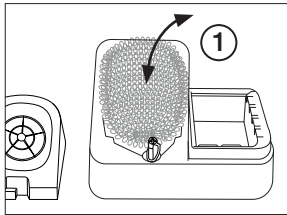


Then inset the new one.

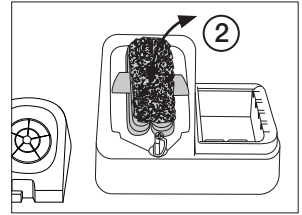
Wool/Brush Replacement



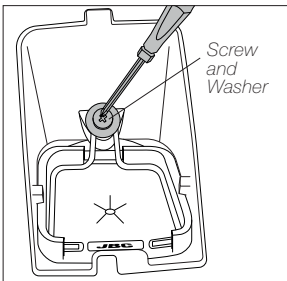
Open the splashguard and take it off.



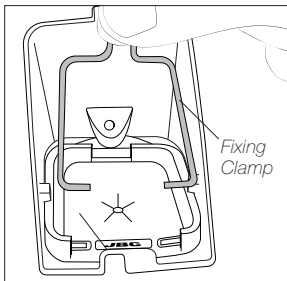
Depending on the component used, replace the brass wool (1) or brush (2) for a new one.



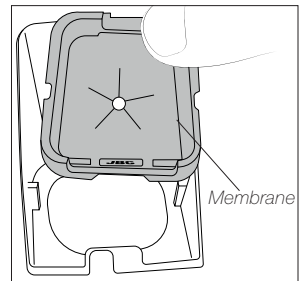
Membrane Replacement



Loosen the screw and remove the screw, the washer.



Then take out the fixing clamp.



Finally the membrane. Replace the membrane for a new one.

Once the new membrane is positioned, place all the components back again and tighten the screw.

Specifications

CLM
Manual Tip Cleaner
Ref. **CL8499**

- Total Net Weight: 877 g / 1.93 lb
- Package Dimensions / Weight:
(Lx W x H) 130 x 100 x 98 mm / 936 g
5.12 x 3.92 x 3.86 in / 2.06 lb

Complies with CE standards.
ESD Safe.



Warranty

JBC's 2 year warranty covers this equipment against all manufacturing defects, including the replacement of defective parts and labour.

Warranty does not cover product wear or misuse.

In order for the warranty to be valid, equipment must be returned, postage paid, to the dealer where it was purchased.



This product should not be thrown in the garbage.

In accordance with the European directive 2012/19/EU, electronic equipment at the end of its life must be collected and returned to an authorized recycling facility.

