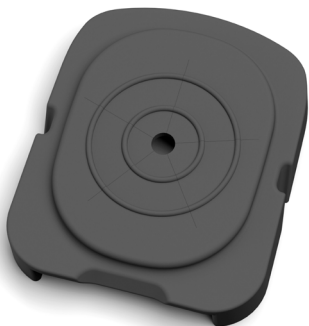


# **JBC**

[www.jbctools.com](http://www.jbctools.com)

## **INSTRUCTION MANUAL**



### **CL7882, CL7574**

Antisplash Membrane for  
Compact Stations & CLM

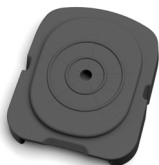
This manual corresponds to the following references:

**CL7882** - *red*

**CL7574** - *black*

## Packing List

The following items are included:



**Antisplash Membrane for Compact Stations & CLM** ..... 1 unit

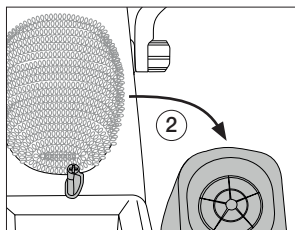
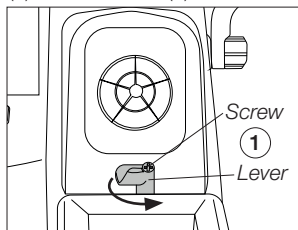


**Manual** ..... 1 unit

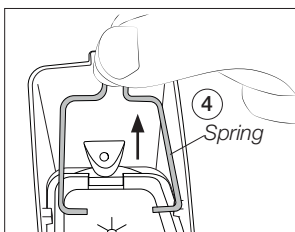
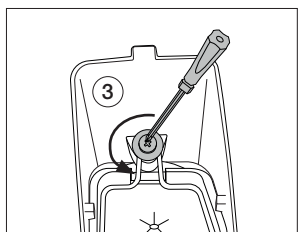
Ref. 0017575

## Membrane Replacement

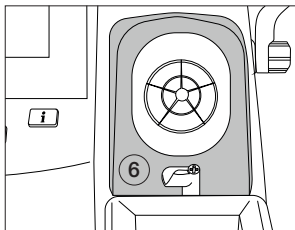
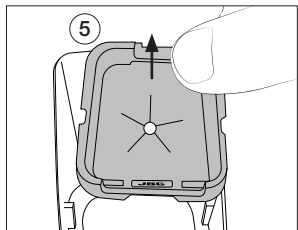
By opening the screw and rotating the lever unlock the splashguard (1) and remove it (2).



Withdraw the screw from the back (3) and remove the spring (4).



Remove the membrane (5) and put the new one in place. Reassemble the splash guard (6) following all steps in reverse order.



# Specifications

**CL7882, CL7574**

**Antisplash Membrane for Compact Stations & CLM**

Ref. **CL7882** - *red*

Ref. **CL7574** - *black*

- Total Net Weight: 9.4 g / 0.021 lb
- Package Dimensions / Weight: 90 x 55 x 40 mm / 19.4 g  
(L x H x W) 3.54 x 2.17 x 1.57 in / 0.043 lb

ESD safe

# JBC

## Warranty

JBC's 2 year warranty covers this equipment against all manufacturing defects, including the replacement of defective parts and labour.

Warranty does not cover product wear or misuse.

In order for the warranty to be valid, equipment must be returned, postage paid, to the dealer where it was purchased.



This product should not be thrown in the garbage.

In accordance with the European directive 2012/19/EU, electronic equipment at the end of its life must be collected and returned to an authorized recycling facility.



[www.jbctools.com](http://www.jbctools.com)