

## Simulation interface monitoring cable



**IT-E161**  
0-10V input/output, simulation interface cable for monitoring and setting, used to control and read back power status  
Applicable model:  
IT6100 series



**IT-E133**  
GPIB communication cable, support SCPI protocol  
Applicable model:  
IT6800 series

## Digital interface monitoring cable



**IT-E162**  
Digital interface cable for monitoring and setting, it can use digital port to control power output state, especially suitable for industrial application.  
Applicable model:  
IT6100 series

**IT-E134**  
GPIB communication cable, support SCPI protocol  
Applicable model:  
IT8500 series



**IT-E163**  
0-10V input/output, simulation interface cable for monitoring and setting, used to control and read back load status  
Applicable model:  
IT8500 series



**IT-E135**  
GPIB communication cable, support SCPI protocol  
Applicable model:  
IT6100 series, IT6322

## Test line



IT-E301/10A



IT-E301/240A  
IT-E301/120A

IT-E30110-AB	10A / 1m / Alligator clips - Banana plugs	A pair of red and black test line
IT-E30110-BB	10A / 1m / Banana plugs - Banana plugs	A pair of red and black test line
IT-E30110-BY	10A / 1m / Banana plugs - Y-type terminals	A pair of red and black test line
IT-E30312-YY	30A / 1.2m / Y-type terminals	A pair of red and black test line
IT-E30320-YY	30A / 2m / Y-type terminals	A pair of red and black test line
IT-E30615-OO	60A / 1.5m / Ring terminals	A pair of red and black test line
IT-E31220-OO	120A / 2m / Ring terminals	A pair of red and black test line
IT-E32410-OO	240A / 1m / Ring terminals	A pair of red and black test line
IT-E32420-OO	240A / 2m / Ring terminals	A pair of red and black test line
IT-E33620-OO	360A / 2m / Ring terminals	A pair of red and black test line

## Optional keyboard



**IT-253 Keyboard Help IT8500 series** electronic load to complete Auto-test function  
Applicable model:  
IT8500 series



**IT-254 Keyboard** Coordinating IT8500+ series electronic load to realize automatic testing function  
Applicable model:  
IT8500+ series

**Communication interface**



IT-E121 RS232 Communication interface, with RS232 standard communication cable  
 IT-E122 USB Communication interface, with USB standard communication cable  
 Applicable models: IT6100, IT6800, IT6322, IT6302, IT8500+, IT8500

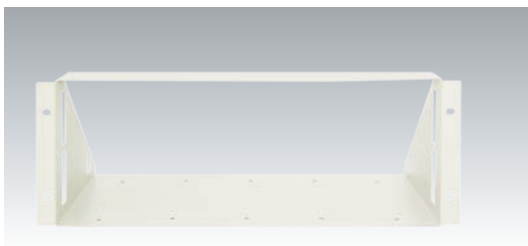


IT-E123 RS485 Communication interface, with RS485 interface  
 Applicable models: IT8500+, IT8500, IT6800, IT6100, IT6322

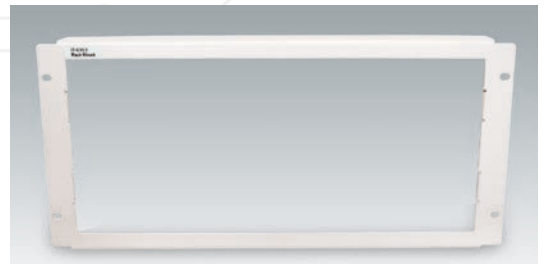


1/2 2U Double units installation picture

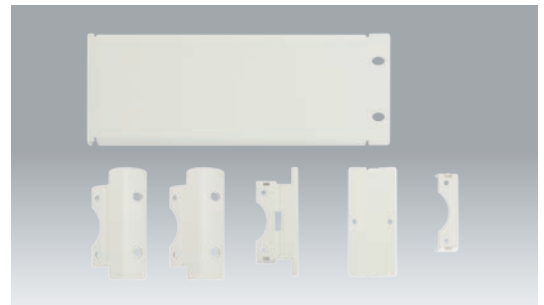
**Rack shelves kit**



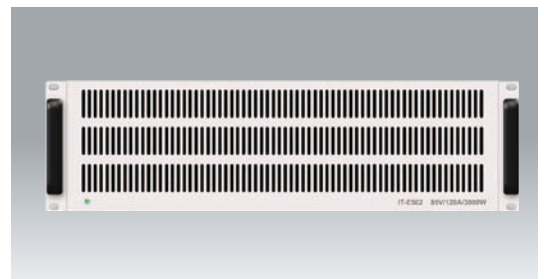
IT-E152 Rack mount kit  
 Applicable models: IT8200 and IT6700 series



IT-E153B Rack mount kit  
 Applicable models: IT8700 series



IT-E151A 19 Rack mount kit  
 Applicable models: ITECH 1/2 2U size model, please consult with ITECH for more details



Power dissipater  
 Applicable models: IT6500C

Model	Specification	Size
IT-E502	80V/120A/3KW	3U
IT-E503	200V/60A/3KW	3U
IT-E504	360V/30A/3KW	3U
IT-E505	500V/20A/3KW	3U
IT-E506	750V/15A/3KW	3U
IT-E507	1000V/10A/3KW	3U



**IT-E601**  
Pin type lead  
Rubber straight plug – Probe crown round head  
**Applicable models:** IT5100



**IT-E602**  
Large clip type lead  
Rubber straight plug – Alligator clips  
**Applicable models:** IT5100



**IT-E603**  
Pin type lead  
Rubber straight plug – Probe double pin plugs  
**Applicable models:** IT5100



**IT-E604**  
Black straight plug - Universal pen + Alligator clip  
**Applicable models:** IT5100



**IT-E605**  
Zero adjustment board (suitable for different probe)  
**Applicable models:** IT5100



**IT-E181**  
system fixture  
**Applicable models:** IT9500

## Current sensor



**IT - E185 (option)**  
Measuring fixture box (250 V / 15 A), easy wiring test  
**Applicable models:** IT9100



**IT-E190-6A (option)**  
Current sensor  
**Applicable models:** IT9100, IT9500



**IT-E190-15A (option)**  
Current sensor  
**Applicable models:** IT9100, IT9500



**IT-E190-25A (option)**  
Current sensor  
**Applicable models:** IT9100, IT9500



**IT-E190-40A (option)**  
Current sensor  
**Applicable models:** IT9100, IT9500



**IT-E190-60A (option)**  
Current sensor  
**Applicable models:** IT9100, IT9500