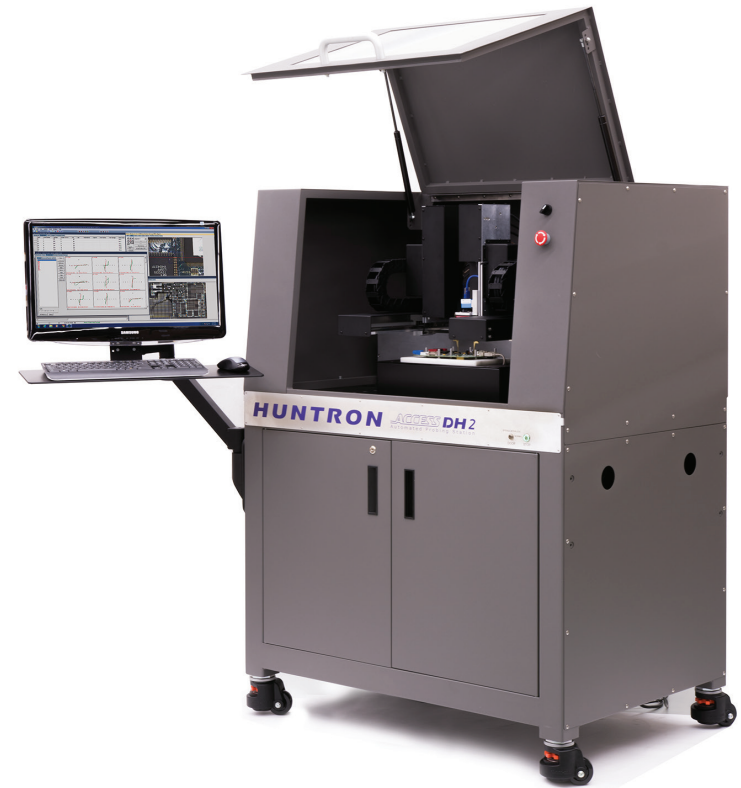
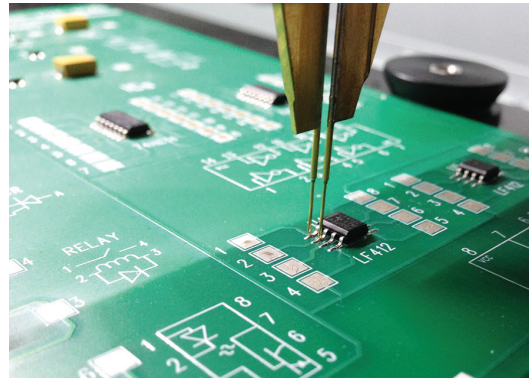
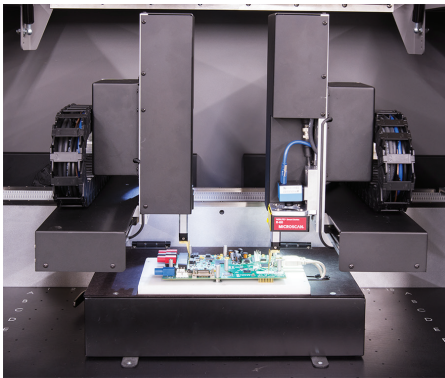


Huntron Access DH2

Key Features

- Dual head flying probe interface for true point-to-point testing
- Sized for small to large circuit boards
- Exceptional accuracy for precise probing of circuit boards
- Dual 19" racks provides plenty of space for PC and integrated test instrumentation
- Ships with a Huntron Tracker® inside and a preconfigured Controller
- Workstation Remote and SDK packages allow for integration of other test instrumentation
- High frequency RG360 cable to the probes connected through high quality SMA connectors



Dual Head Probing and Integrations

The Access DH2 Prober is a dual head Robotic Flying Probe system that is best suited for circuit board testing where interfacing between two points is necessary. The Access DH2 stands in its own cabinet with plenty of space underneath for the rack mounted Controller and other test instrumentation. The open architecture design of the Access DH2 makes it possible for you to utilize flying probe technology with many different test methods where automated probing of the circuit board under test makes sense.

Huntron Access DH2 Specifications

Number of test heads	2
Maximum PCB size	27" x 23" (68.6cm x 58cm)
Maximum Board Probing Area	19" x 12" (48.3cm x 30.5cm)
Maximum Component Height	4.8" (15.2cm)
Minimum Resolution	0.00002" (0.4 microns)
Probe to Probe spacing	0.05" (1.27mm) minimum
Camera system	Two high resolution, auto focus USB cameras
Physical	47" W x 61.5" H x 35.75" D (w/handle) (119.4cm W x 156.2cm H x 90.8cm D)

2010 - The dual head Access DH Prober is introduced



2015 - Huntron introduces the Tracker 3200S

