



HIOKI

INSTRUCTION MANUAL

9267

**SAFETY TEST DATA
MANAGEMENT SOFTWARE**

HIOKI E. E. CORPORATION

Contents

Introduction	i
Safety Notes	i
Notes on Use	ii
Chapter 1 Setup	1
1.1 Operating environment	1
1.2 Installation	2
1.3 Uninstallation	3
Chapter 2 Specifications	5
Chapter 3 Before Using the Software	7
3.1 Outline of the Product	7
3.2 Test Details and Compatible Testers	7
3.3 Serial-Port Check	8
3.4 Tester Connection and Communication-Function Settings	8
Chapter 4 Initial Settings (Settings to Be Made Prior to Operation)	9
4.1 Test-Sequence Settings and Tester Selection	9
4.2 Serial-Port Settings	10
Chapter 5 Execution of Safety Tests (General Flowchart)	11
5.1 Safety-Test Flowchart	11
5.2 Before Conducting Tests	12
5.3 Starting Tests	13
5.4 Test-Result Display and Data File	14
5.5 File Format	15
Chapter 6 Using the Functions	17
Chapter 7 Other Information	25
7.1 Troubleshooting	25
7.2 Support	26

User's License Agreement

Important:

Please read the following agreement carefully. This user's license agreement (hereafter referred to as Agreement) is a legal contract between the software user (individual or institution) and HIOKI E. E. CORPORATION (hereafter referred to as HIOKI). The term "software" includes any related electronic documentation and computer software and media, as well as any printed matter (such as the Instruction Manual).

By installing, reproducing, or using the software, you, the Licensee, agree to accept the license terms set forth in this Agreement.

Returning the User Registration Card

If you consent to the terms in this Agreement, please return the provided User Registration Card (postcard) to HIOKI. Only registered users will receive software support and up-to-date information services.

Overseas customers do not need to return the User Registration Card, and will receive information services from their HIOKI distributor.

This software is protected by copyright laws, international copyright agreements, as well as non-corporate laws. The software is a licensed product, and is not sold to the user.

(1) License

This Agreement grants you, the Licensee, a license to install a single copy of the software on a specified computer system.

(2) Explanation of other rights and restrictions

1. Restrictions on reverse engineering, decompiling, and disassembling:

You may not reverse engineer, decompile, or disassemble the software.

2. Separation of components:

This software is licensed for use as a single product. You may not separate the components for use on multiple computer systems.

3. Loaning:

You may not loan or lease the software.

4. Transfer of software:

You may transfer full rights in accordance with this Agreement. However, if you do so, you may not retain any copy of the software, but must transfer the software in its entirety (all components, media, related documentation such as the Instruction Manual, and this Agreement), and must ensure that the receiver of the software agrees with the terms set forth in this Agreement.

5. Cancellation:

In the event that the terms and conditions set forth in this Agreement are violated, HIOKI retains the right to cancel this Agreement without compromise of any of its other rights. In this event, you must destroy all copies of the software and its components.

(3) Copyright

The title and copyright rights concerning the software's related documentation, such as the Instruction Manual and copies of the software, are the property of HIOKI and other licensors, and are protected by copyright laws and international agreement regulations. Accordingly, you must treat the software as you would any other copyrighted document. However, you are permitted to make copies as indicated in (A) and (B) below provided such copies are not intended for use other than back-up purposes.

(A) You may make a single copy of the software.

(B) You may install this software on a single computer. However, you may not reproduce the documentation supplied with the software, such as the Instruction Manual.

(4) Dual media software

You may receive the same software on more than one type of media. However, regardless of the type and size of media provided, you may only use one media type and only on a single computer. You must not use or install the other media on any other computer. Furthermore, except when transferring the software as stipulated above, you may not loan, lease, or transfer the other media to any other user.

(5) Warranty

1. HIOKI reserves the right to make changes to the software specifications without any prior warning. If HIOKI releases a new version of the software, it will provide registered users with information about the revised software.
 2. If the software does not operate in accordance with the supplied Instruction Manual, or the software media or Instruction Manual are damaged in any way, you have one year from the date of purchase to apply for either an exchange or repair at HIOKI's discretion.
 3. In no event will HIOKI be liable for any damages resulting from fire, earthquake, or actions of a third party under the conditions stated in item number 2 above, or for any damage caused as a result of your using the software incorrectly or under unusual circumstances. Further, the warranty is invalid if the following occurs:
 - Damage incurred through transport, moving, droppage, or any other kind of impact after you purchased the software.
 - Damage incurred through any form of alteration, unwarranted servicing, or any other type of mistreatment.
 4. In the event that the software is exchanged or repaired, the period of warranty expires on the latest occurring date out of the day stated in the original warranty, and exactly 6 months from the day the exchanged/repaired software is returned to you.
 5. Regardless of the grounds for making a legal claim, HIOKI and its licensors will not be liable for any damage incurred (including, but not limited to: lost profits, suspension of business, loss of data or lost savings) unstated in the warranty terms for the use of this software. This is true even if HIOKI is notified of the possibility of such damages. In any event, HIOKI's liability shall be limited only to replacing defective software with software that is not defective
-

Introduction


Thank you for purchasing the HIOKI "Model 9267 SAFETY TEST DATA MANAGEMENT SOFTWARE." To obtain maximum performance from the product, please read this manual first, and keep it handy for future reference.

Safety Notes

This manual contains information and warnings essential for safe operation of the product and for maintaining it in safe operating condition. Before using it, be sure to carefully read the following safety precautions.

Safety symbols



In the manual, the  symbol indicates particularly important information that the user should read before using the product.

The following symbols in this manual indicate the relative importance of cautions and warnings.



Indicates that incorrect operation presents a possibility of injury to the user or damage to the product.



Indicates advisory items related to performance or correct operation of the product.

Notation

- Unless otherwise specified, \backslash Windows ε represents Windows 95, 98, Me, Widows NT4.0, Windows 2000, or Windows XP.
- Dialogue box represents a Windows dialog box.
- Menus, commands, dialogs, buttons in a dialog, and other names on the screen and the keys are indicated in brackets.

Mouse Operation

Click	Press and quickly release the left button of the mouse.
Right-click	Press and quickly release the right button of the mouse.
Double click	Quickly click the left button of the mouse twice.
Drag	While holding down the left button of the mouse, move the mouse and then release the left button to deposit the chosen item in the desired position.
Activate	Click on a window on the screen to activate that window.

Notes on Use

In order to ensure safe operation and to obtain maximum performance from the unit, observe the cautions listed below.

 CAUTION
--

- Always hold the disc by the edges, so as not to make fingerprints on the disc or scratch the printing.
- Never touch the recorded side of the disc. Do not place the disc directly on anything hard.
- Do not wet the disc with volatile alcohol or water, as there is a possibility of the label printing disappearing.
- To write on the disc label surface, use a spirit-based felt pen. Do not use a ball-point pen or hard-tipped pen, because there is a danger of scratching the surface and corrupting the data. Do not use adhesive labels.
- Do not expose the disc directly to the sun's rays, or keep it in conditions of high temperature or humidity, as there is a danger of warping, with consequent loss of data.
- To remove dirt, dust, or fingerprints from the disc, wipe with a dry cloth, or use a CD cleaner. Always wipe radially from the inside to the outside, and do no wipe with circular movements. Never use abrasives or solvent cleaners.

- Hioki shall not be held liable for any problems with a computer system that arises from the use of this CD-R, or for any problem related to the purchase of a Hioki product.
- This product is subject to change and the version is subject to upgrading without prior notice, for the purpose of making improvements.

Trademarks

- Pentium is a registered trademark of Intel Corporation.
- Windows is a registered trademark of Microsoft Corporation.

Copyright©1981-2000 Microsoft Corporation.All rights reserved.
Copyright©HIOKI E.E.Corporation 2001-2002.

Chapter 1

Setup

1.1 Operating environment

Before installing the software in your personal computer, be sure to check the operating environment of the PC.

Operating environment

The personal computer in which this software is installed must have the operating environment described below

- PC/AT-compatible personal computer equipped with an Intel Pentium 200-MHz CPU or the equivalent, or better
- Free hard-disk capacity (at the time of software installation): 4 MB or more
- Main memory: 32 MB or more
- Display: 800 x 600 dots or higher
- CD-ROM drive (required for software installation)
- Mouse or other appropriate pointing device
- Serial ports
- Windows 95/98/Me, Windows NT4.0, Windows 2000, or Windows XP.

1.2 Installation

Before executing the setup program for software installation, shut down all currently running applications.

Be sure to close any anti-virus software. If anti-virus software is running, it may prevent installation. If you are using Windows NT4.0, Windows 2000, or Windows XP make sure the user permission is set to allow software installation. Note that the software may not operate properly in some operating environments.

NOTE

Before upgrading to a newer version, be sure to uninstall the previous version.

□ Installing the software

1. Insert the supplied CD-R disc into the CD-ROM drive.
2. Execute X:\ENGLISH\SETUP.EXE (X: CD-ROM drive letter) by double-clicking on it.
3. When the installation program of the SAFETY TEST DATA MANAGEMENT SOFTWARE starts up, follow the directions displayed on the screen.
4. The setup dialog box appears. In this box, the installation destination can be changed using the [**Change Directory**] button (default installation directory: C:\Program Files\SAFETY).
5. When the large PC illustration is clicked on, installation starts.
6. When installation is completed successfully, SAFETY TEST DATA MANAGEMENT SOFTWARE is registered under [**Programs**] in the Windows Start menu. To start up the program, locate and select [**SAFETY TEST DATA MANAGEMENT SOFTWARE**].

NOTE

This application is produced using Microsoft VisualBasic 6.0. During installation, a number of Windows shared files are copied. During this process, an error message may be displayed. The message box includes several buttons. Click on the Skip button to skip the copying process for the file that caused the error message and continue the installation operation. An error message is displayed in the following cases:

- When a shared file to be copied already exists in the PC and is being used by another application running at the time of installation
- When Windows is using the shared file to be copied and the VisualBasic installation program protects the application operation

1.3 Uninstallation

Follow the procedure specified below to uninstall 9267 SAFETY TEST DATA MANAGEMENT SOFTWARE.

Uninstalling the software

1. In the Windows Start menu, select [**Settings**] and then Control Panel. Click on [**Add/Remove Programs**].
2. Select [**SAFETY TEST DATA MANAGEMENT SOFTWARE**] in the displayed list, and click on [**Add/Remove**] to uninstall the software.

Chapter 2

Specifications

(1) General

Supplied medium	CD-R (1)
Accessory	Instruction manual (1)

(2) Operating environment

Main unit	PC/AT compatible
CPU	Pentium 200 MHz or later
OS	Windows95/ 98/ Me/ NT4.0/ 2000/ XP
Display	800 X 600 dots or more
Memory	32 MB or more
Hard disk	Free capacity: 4 MB or more

(3) Function specifications

Types of test	Insulation/withstand-voltage test, protective grounding test, actual operation test, and leakage current test
Applicable models	3153, 3159 (Insulation/withstand-voltage test) 3154 (Insulation test) 3156 (Leakage current test) 3158 (Withstand-voltage test) 3157 (Protective grounding test) 3332 (Actual operation test) PLC (for connection switching)
Interface	RS-232C
Data recording	Test results (measurements) saved in a text file (CSV format)
Test-result display	Indication of "Pass" or "Fail" following test Display of test-result list and detailed test results also possible
Tester setting	Setting of individual testers possible With 3153, program-function setting also possible
ID function	Input of ID for test sample possible Test results recorded with ID designation
Connection-switching function	Command transmitted to the PLC prior to each test for connection switching

Chapter 3

Before Using the Software

3.1 Outline of the Product

This software performs electrical-equipment safety tests such as withstand-voltage tests, insulation tests, protective grounding tests, and leakage current test, and also saves measurements in a text file. The software sets the test conditions and controls the testing operations of testers connected to the PC via RS-232C.

3.2 Test Details and Compatible Testers

The following shows the tests that can be conducted using the software and compatible testers. Note that testers not listed below cannot be used.

Insulation/ withstand-voltage test	3153, 3159, 3158 (withstand-voltage test only) (To be selected from the above three models)
Insulation test	3154
Leakage current test	3156
Protective grounding test	3157
Actual operation test	3332

3.3 Serial-Port Check

This software uses the RS-232C interface for the connection of testers. Each tester requires a serial port (RS-232C interface connection line). Therefore, there must be as many serial ports as testers to be connected. If the number of serial ports is insufficient, use a commercially available serial interface or a USB-serial converter. HIOKI has confirmed the proper operation of the following USB-serial converter product with the software:

CONTEC Model COM-4 (USB) (providing four serial ports per USB connector)

3.4 Tester Connection and Communication-Function Settings

Set the interface of each tester for RS-232C connection.

The main test settings can be made using the software. However, detailed settings must be made manually in advance. When using the 3153, 3159, and/or 3158, set each tester so as to allow command start using the Option-setting dialog box. For details, refer to the instruction manual of each tester.

Set the communication speeds specified below for the testers. If these settings are not made, a communication failure will result.

3153	9600 bps
3154	9600 bps
3156	9600 bps
3159	9600 bps
3158	9600 bps
3157	9600 bps
3332	9600 bps

After making the communication settings for the testers, connect the testers to the PC's serial ports (COM ports) using crossing cables. Use only crossing cables for the connection of testers to the PC. Use of any other type of cable will prevent communication. For details, refer to the instruction manual of each tester.



After the software starts up, the serial (COM) ports must be set according to the tester type. Be sure to note the serial (COM)-port number of each tester.

Chapter 4

Initial Settings (Settings to Be Made Prior to Operation)

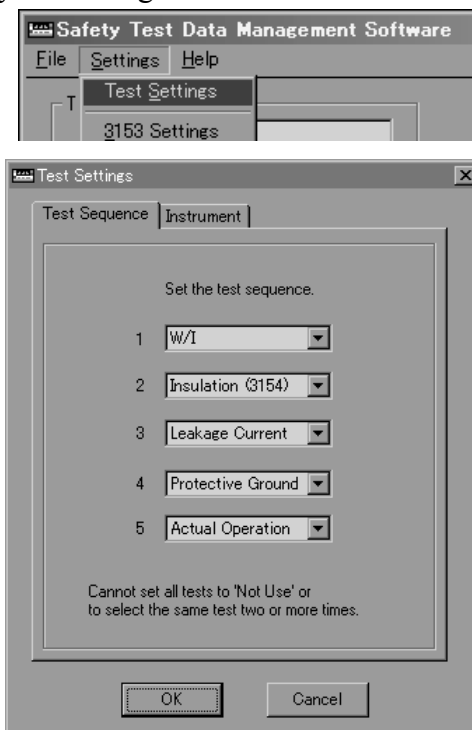
4.1 Test-Sequence Settings and Tester Selection

After the software starts up, make the settings specified below.

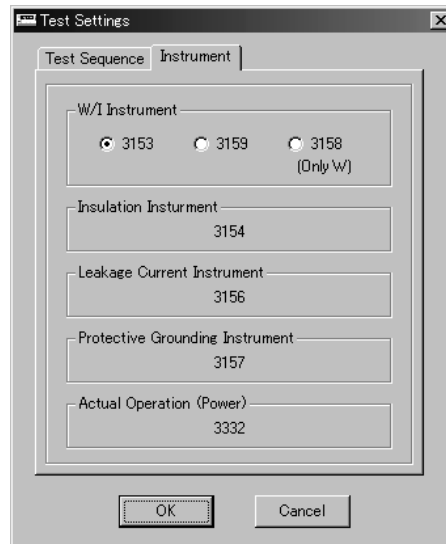
Test sequence and tester selection

Set the test types, test sequence, and testers to be used.

Select Settings from the menu bar, and select [Settings]-[Test Settings] menu to display the dialog box.



Select test items in order of execution in the test-sequence dialog box. Tests can be set in any sequence, but it is not possible to set all tests to "Not use" or to select the same test two or more times.

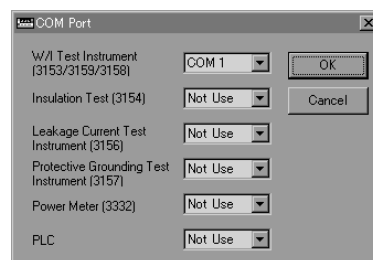
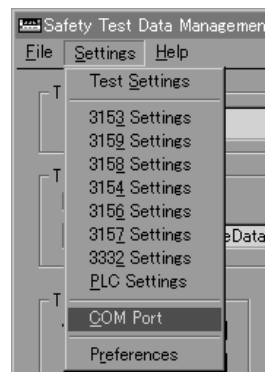


Select the tester to be used for the insulation withstand-voltage test in the tester dialog box. Note that the test cannot be conducted if the selected tester model does not correspond to the connected tester.

4.2 Serial-Port Settings

Set the serial (COM) port for each connected tester. If settings are not made correctly, a communication failure will result.

Select Settings from the menu bar, and then select **[Settings]-[COM Port]** menu to display the dialog box.



Set the serial (COM) port for each tester.



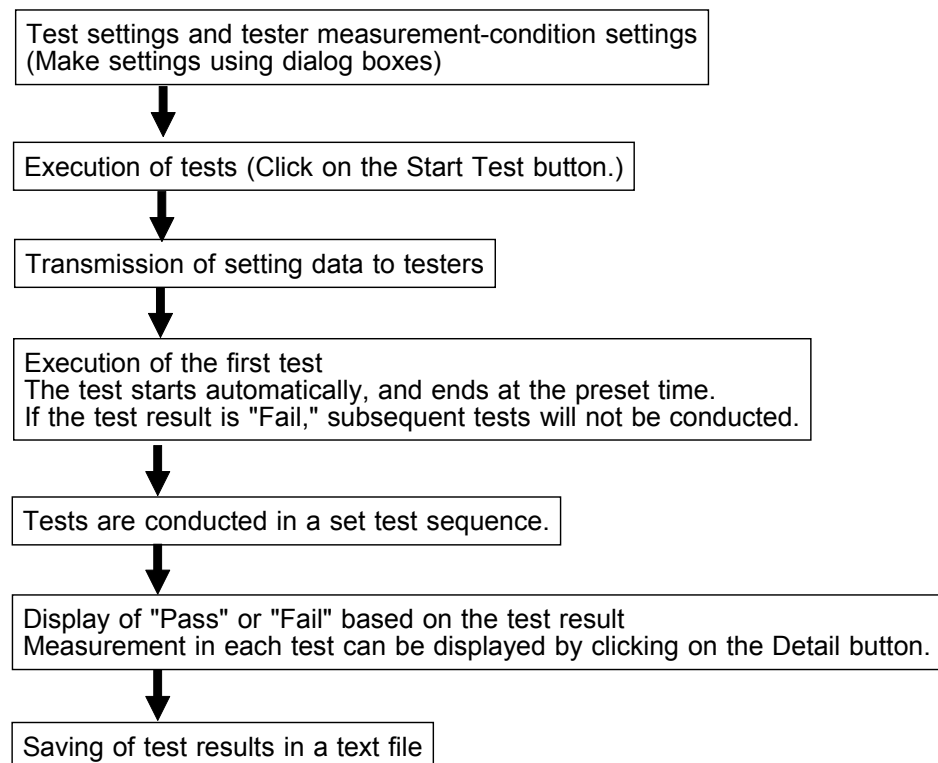
The serial-port list displays connectable COM ports only.

Chapter 5

Execution of Safety Tests (General Flowchart)

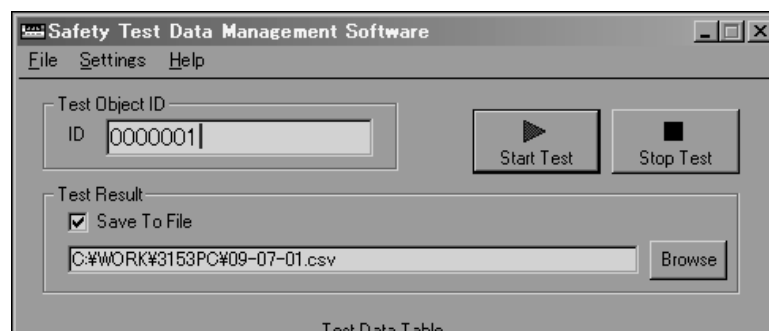
5.1 Safety-Test Flowchart

This software performs safety tests and displays the test results. It also saves the measurement data in a text file. The test flow is shown below.



5.2 Before Conducting Tests

1. Make sure each tester is properly connected to the PC with the RS-232C crossing cable.
2. Check the COM-port setting dialog box to confirm that the COM ports and connected testers correspond. For details, refer to "4.2 Serial-Port Settings."
3. Make sure the probe of each tester is properly connected to a test sample.
4. In the 3158 and 3159, make sure the voltage dial is set to the desired output voltage.
5. When a PLC is used for connection switching, be sure to conduct a pretest operation under safe conditions before performing an actual test, in order to ensure proper operation* of the PLC.
*: Confirm that commands are transmitted properly and that switching is performed according to the settings.
6. Make sure the PLC's serial port is properly connected. Regarding connection switching using a PLC, refer to "(5) Connection-switching function" in "Chapter 6 Using the Functions."
7. Make sure the ID is properly set correctly in the software window.
8. Check the name of the file in which data is to be saved.
If it is not necessary to save data, remove the check mark from the box.



5.3 Starting Tests

1. Click on the [**Start Test**] button.
2. A confirmation message appears on the screen.
3. Click on [**OK**] to start the tests. When the set test time elapses, tests end.
4. Measurements are displayed in the measurement display section.

When a test result deviates from the standard-value range, a "Fail" indication is displayed and the test stops. Subsequent tests will not be performed. When a test result is within the standard-value range, the testing operation continues.

5. Tests are conducted until all selected tests are performed.

To stop the test, click on the [**Stop Test**] button. When a test is interrupted in this manner, the software does not evaluate the test result for judgement display or save the result in a file.

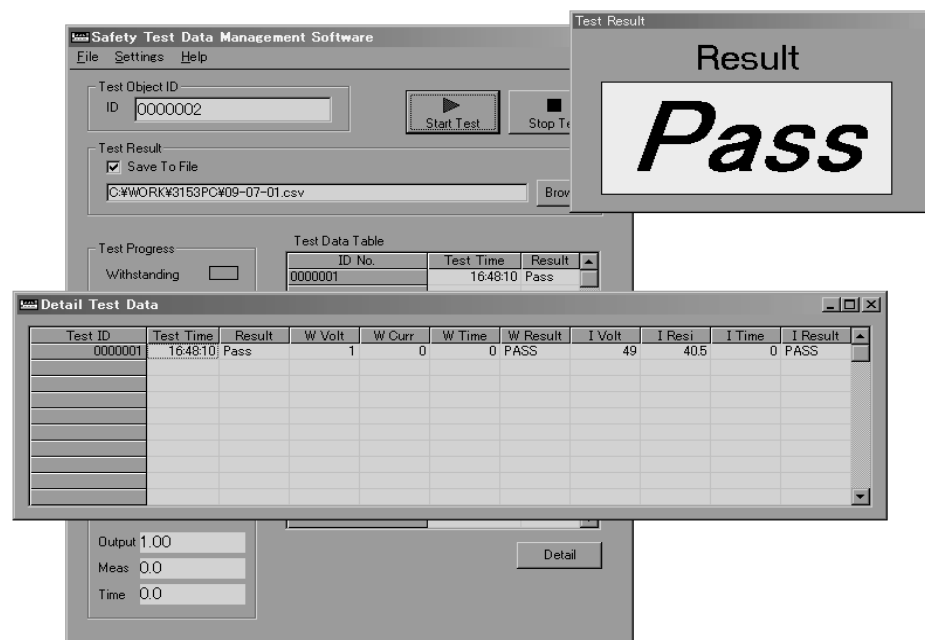
NOTE

- The commencement of each test is controlled by the PC. Note that the software does not support manual start or stop (using the start button or the remote start switch of units). The Option dialog boxes of the 3153, 3159, and 3158 have a setting item to enable and disable command start. Use this setting to enable command start for each tester. If this setting is not made, the testers cannot be started by the PC, and an error will occur. For details, refer to the instruction manual of each tester.
- When the set test time has elapsed, the tests stop. In normal use, set the test-time setting to ON. If the test-time setting is set to OFF, tests will not stop until the Abort Test button is clicked on or the [**Stop Test**] button on the main unit is pressed. When either of these actions is taken, the software detects test abortion; therefore, it will not evaluate the test result for judgement display or save the result in a file.

5.4 Test-Result Display and Data File

Upon completion of all tests, the software evaluates their results and displays "Pass" or "Fail" as an overall judgement result.

The "Pass" indication is displayed only when all test results are within the standard-value range. The test results are added to the test-result list together with the test ID and displayed. The measurement in each test can be displayed by clicking on the [Detail] button.



When the box for saving test results in a file contains a check mark, the test results are output to the specified file in text format. As this file is in text format (CSV format), it can be opened using a spreadsheet application such as Excel.



The test-result list and detailed test-result table show a maximum of 25 test results (or five when testing leakage current), starting with the most recent. The results of tests conducted prior to that cannot be displayed. All test results are saved in text files.

5.5 File Format

Saved test results are written in CSV format (comma-separated text values). The writing sequence is the same as that displayed in the detailed test-result table.

The first line begins with the test item names, followed by the test results. The results of each test cycle (all tests applied to each tested unit) are written on a single line, or on five lines when testing leakage current.

Except when testing leakage current, all test results are written on a single line.

The ID, test date, test time, test results (overall), conditions of each test, measured values and measurement time are followed by the test results.

The second through fifth lines contain leakage current test results. If leakage current testing is not performed, these lines are not present, and the results of the next test are written instead.

The second line consists of the test conditions for the leakage current test, the third line contains the judgment values, the fourth line contains the measured values and the fifth line contains the judgment results, with the results of all steps listed in sequence horizontally.

For leakage current test conditions, the following series is written as a single character string, separated by colons.

Step Number:Network:Measurement Mode:Test Status:Polarity:Filter:Measurement Current

Recording File Example

```
Test ID,Test Date,Test Time,Result,W Volt [kV],W Curr [mA],W Time [s],W Result,I Volt [V],...
0000021,2002/11/11,15:41:00,Pass,0.2,0,0.3,PASS,487,10000,0.3,PASS
0000021,Leak Test Condition, 1:A:Encl-Line:ApplyL:----:ON:ACDC, 2:A:Earth:...
0000021,Leak Allowable [A],+10.000E-03,+10.000E-03
0000021,Leak Max [A],+11.11E-06,+11.50E-06
0000021,Leak Judge,PASS,PASS
0000022,2002/11/11,15:46:20,Pass,0.2,0,0.3,PASS,490,10000,0.3,PASS
0000022,Leak Test Condition, 1:A:Encl-Line:ApplyL:----:ON:ACDC, 2:A:Earth:...
0000022,Leak Allowable [A],+10.000E-03,+10.000E-03
0000022,Leak Max [A],+11.58E-06,+10.87E-06
0000022,Leak Judge,PASS,PASS
```

Measurement Units

The units of measurement for recorded values are as follows.

Test	Models	Measurement Items	Units
Withstand-voltage test	3153 3158 3159	Output Voltage	kV
		Withstand Current Test Result	mA
Insulation test	3153 3159 3154	Output Voltage	V
		Insulation Resistance Test Result	MΩ
Protective grounding test	3157	Output Current	A
		Protective Grounding Resistance Test Result	Ω
Leakage current test	3156	Allowable Value	A
		Leakage Test Results	A
Actual operation test	3332	Current	A
		Voltage	V
		Effective Power	W

* The unit of measurement time is always "s" (seconds).

The following values have special significance when written as measurement values.

Test	Models	Measurement Items	Measurement Value	Meaning
Insulation test	3153	Insulation Resistance Test Result	10000	O.F.
			0	U.F.
	3159 3154	Insulation Resistance Test Result	9999	O.F.
			0	U.F.
Protective grounding test	3157	Protective Grounding Resistance Test Result	9999	O.F.
Leakage current test	3156	Leakage Test Results	9.999E+9	O.F.
			-9.999E+9	-O.F.
Actual operation test	3332	Voltage, Current, and Effective Power	999.99E+9	O.F.
			-999.99E+9	-O.F.

* O.F.: Overflow (indicates the measured value is above the measurement range)

U.F.: Underflow (indicates the measured value is below the measurement range)

Refer to the operating manual of the particular instrument for its measurement range.

Chapter 6

Using the Functions

(1) Test-sequence setting and tester selection

Used to set test types, test sequences, and testers to be used.

Select Settings from the menu bar, and then select [**Settings**]-[**Test Settings**] menu to display the dialog box.

For details, refer to "4.1 Test-Sequence Settings and Tester Selection."

(2) Serial-port settings

Used to set the serial (COM) port for each connected tester. If settings are not made correctly, a communication failure will result. To display this dialog box, select Settings from the menu bar, and then select [**Settings**]-[**COM port**] menu. For details, refer to "4.2 Serial-Port Settings."

(3) Tester settings

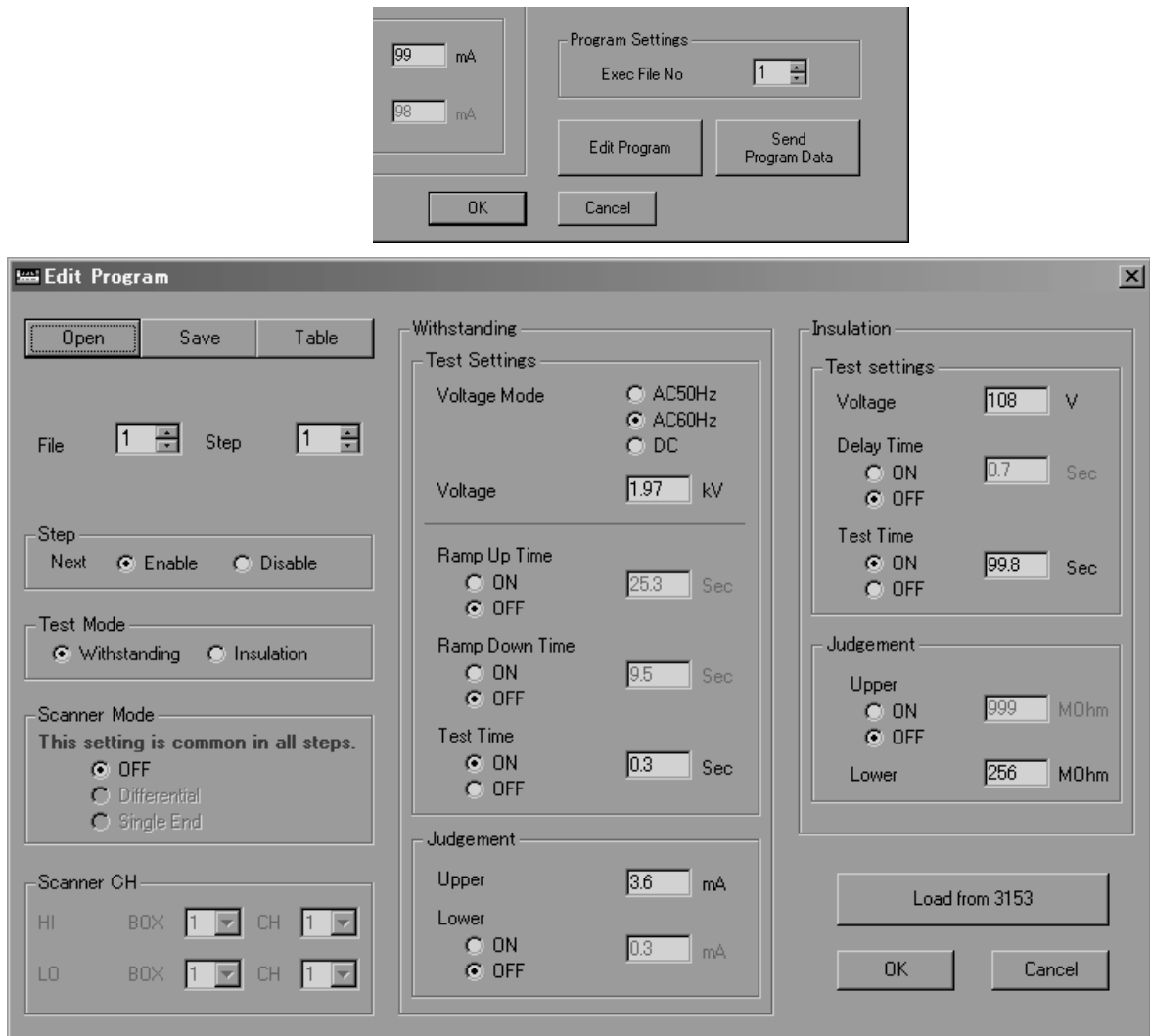
Used to set measurement conditions for each tester.

3153	[Settings]-[3153 Settings]
3154	[Settings]-[3154 Settings]
3156	[Settings]-[3156 Settings]
3159	[Settings]-[3159 Settings]
3158	[Settings]-[3158 Settings]
3157	[Settings]-[3157 Settings]
3332	[Settings]-[3332 Settings]

When a PLC (programmable logic controller) is used to control connection switching, make settings to enable the use of a PLC. Regarding connection switching using a PLC, refer to "(5) Connection-switching function" in "Chapter 6 Using the Functions." Select the [**Settings**]-[**PLC Settings**] menu, the wait insertion time, and the communication settings.

(4) 3153 program editing and transmission

The 3153 is equipped with a program function, and this software allows easy program setting. Select Settings from the menu bar, and then select [Settings]-[3153 Settings] menu. To display the program editing dialog box, click on the [Edit Program] button.



This dialog box allows steps to be set for each file.

NOTE

- Setting changes are entered when the file number or step number is changed. Setting changes are not finalized until the [OK] button is clicked on and the editing dialog box is closed. When the [Cancel] button is clicked on, editing operations are canceled and the set values remain unchanged.
- To display the list of program settings, click on the [Table] button. The value of each setting can be changed by double-clicking on the applicable item.
- Program settings can be saved in a text file by clicking on the [Save] button. Setting data is saved in the CSV format, so it can be opened using Excel and other applications. By clicking on the [Open] button, program-setting data can be transferred from a saved text file containing program-setting data.
- After completing the program setting, click on [OK] in the editing dialog box to close the dialog box. The program-setting data must be transmitted to the 3153 unit prior to use. To do so, click on the [Send Program Data] button in the 3153 setting dialog box to transfer the data to the 3153 unit.

(5) 3156 Settings

Model 3156 provides the capability for various leakage current tests. The [Settings]-[3156 Settings] menu displays the 3156 Settings screen. Test settings are made for each step. Test conditions, allowable value, measurement time and pre-test connection switching by PLC can be set for each step. A test setting can be changed by double clicking the corresponding cell. Up to 500 steps can be set up, with testing performed in order from Step 1 (only those test steps that are set as enabled are performed). Steps can be copied, deleted and pasted using the [Edit] menu, so test steps can be deleted and their order changed.

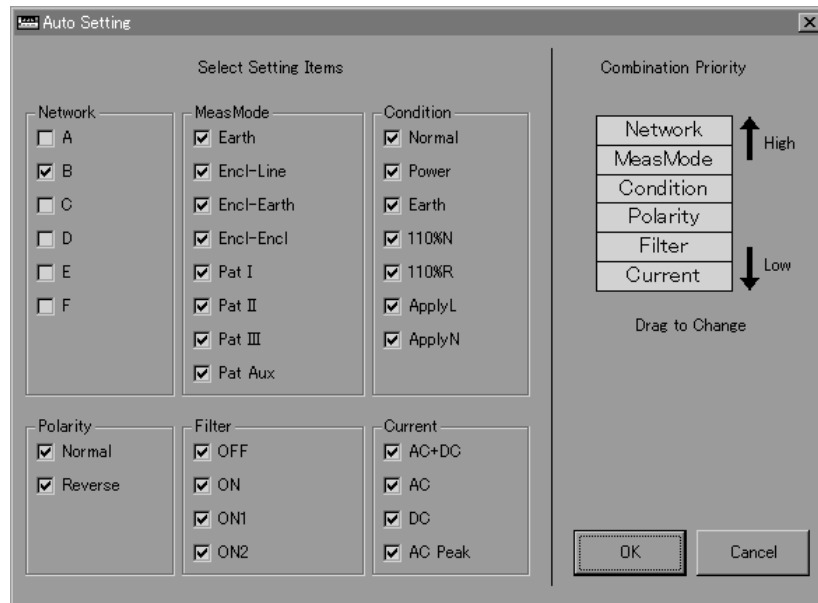
Step	Test	Network	MeasMode	Condition	Polarity	Filter	Current	Range	Judge	Allow [mA]
1	Enbl	B	Earth	Normal	Normal	ON	AC+DC	AUTO	Enbl	0.5
2	Enbl	B	Earth	Normal	Reverse	ON	AC+DC	AUTO	Enbl	0.5
3	Enbl	B	Earth	Power	Normal	ON	AC+DC	AUTO	Enbl	1
4	Enbl	B	Earth	Power	Reverse	ON	AC+DC	AUTO	Enbl	1
5	Enbl	B	Encl-Earth	Normal	Normal	ON	AC+DC	AUTO	Enbl	0.1
6	Enbl	B	Encl-Earth	Normal	Reverse	ON	AC+DC	AUTO	Enbl	0.1
7	Enbl	B	Encl-Earth	Power	Normal	ON	AC+DC	AUTO	Enbl	0.5
8	Enbl	B	Encl-Earth	Power	Reverse	ON	AC+DC	AUTO	Enbl	0.5
9	Enbl	B	Encl-Earth	Earth	Normal	ON	AC+DC	AUTO	Enbl	0.5
10	Enbl	B	Encl-Earth	Earth	Reverse	ON	AC+DC	AUTO	Enbl	0.5
11	Enbl	B	Encl-Earth	110 Ω N	Normal	ON	AC+DC	AUTO	Enbl	0.5
12	Enbl	B	Encl-Earth	110 Ω N	Reverse	ON	AC+DC	AUTO	Enbl	0.5

NOTE

- Multiple commands can be sent to the PLC by inserting double slashes ("/") as separators.
Example: AAAAA//BBBBB
Send command BBBBB followed by AAAAA.
Commands separated by "/" are sent at intervals of approximately 250 ms.
- Test condition settings can be selected only in combinations that are allowed by the 3156 instrument. When changing test settings, if a setting is disallowed by other settings made for that step, it is automatically reset to an allowed setting.
- If you have changed the grounding class or applied part, as described above, it will be automatically reset to an allowed setting.

(6) 3156 Auto Setting

Click [**Auto Setting**] on the 3156 Settings screen to display the auto setting screen for leakage current testing.



Select the network to test, test contents and conditions beforehand. Then click [**OK**] to automatically select all executable test combinations from the items selected beforehand, and create the corresponding test steps. Also, by specifying the priority of combinations beforehand, you can change their order of selection.



With network B, if a test mode is selected that does not allow any AC/DC measurement current setting, AC+DC or AC is selected as the preset AC/DC measurement current setting and is set for the test step, regardless of the selected AC/DC measurement current.

(7) Precautions for Leakage Current Testing with the Model 3156

When performing leakage current testing using the 3156, and when switching power polarity, the power supply is briefly interrupted. In this case, depending on the device under test, the power may be cut off and problems could result.

To minimize such problems, we suggest making test settings as follows:

- Within the same measurement mode, perform forward- and reverse-phase tests in sequence so that polarity is switched only once (in the priority of combinations for automatic test setting, set the priority of polarity to follow that of the measurement mode).
- Perform the last test step in the power-off state.

Examples

Network	Measurement Mode	Condition	Polarity	Filter
B	Between enclosure and earth	Normal	Normal	OFF
B	Between enclosure and earth	Normal	Normal	ON
B	Between enclosure and earth	Disconnection of protective earth conductor	Normal	OFF
B	Between enclosure and earth	Disconnection of one wire in power line	Normal	OFF
B	Between enclosure and earth	Normal	Reverse	OFF
B	Between enclosure and earth	Normal	Reverse	ON
B	Between enclosure and earth	Disconnection of protective earth conductor	Reverse	OFF
B	Between enclosure and earth	Disconnection of one wire in power line	Reverse	OFF
B	Patient leakage current I	Normal	Normal	OFF
B	Patient leakage current I	Normal	Normal	ON
B	Patient leakage current I	Disconnection of protective earth conductor	Normal	OFF
B	Patient leakage current I	Disconnection of one wire in power line	Normal	OFF
B	Patient leakage current I	Normal	Reverse	OFF
B	Patient leakage current I	Normal	Reverse	ON
B	Patient leakage current I	Disconnection of protective earth conductor	Reverse	OFF
B	Patient leakage current I	Disconnection of one wire in power line	Reverse	OFF

However, when changing the measurement mode, the 3156 is set to the "reverse phase, disconnection of protective earth conductor" default condition, so even if power is cut at the end of the previous test, power is applied briefly when changing the measurement mode.

(8) Connection-switching function



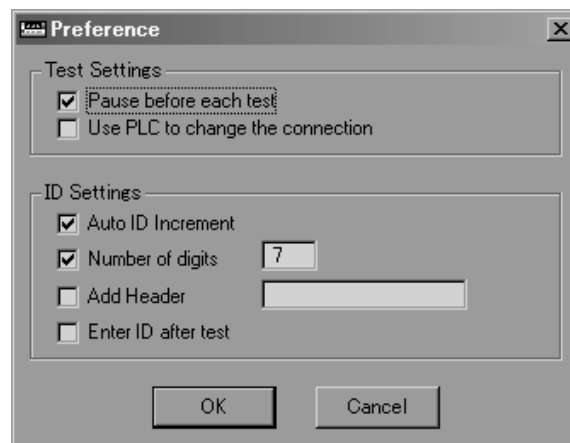
Make sure connections are switched properly before conducting tests. If connections do not switch correctly, the execution of tests may damage testers.



Verification of the test-system operation before and after each workday ensures the reliability of measurement results for safety tests and data recording.

This software features a connection-switching function. This function transmits a command to a PLC (programmable logic controller) prior to each test, to execute connection switching. To use this function, make the settings specified below.

1. Select [**Settings**]-[**Preferences**] menu.
2. Place a check in the box for [**Use PLC to change the connection**].
3. Click on [**OK**] to close the dialog box.



4. Select [**Settings**]-[**PLC Settings**] menu to open the setting dialog box. A PLC can be sent commands prior to each test. A wait time to be inserted before the switching operation can also be set. This dialog box is used to make communication settings. Make proper settings according to the PLC used.



Multiple commands can be sent to the PLC by inserting double slashes ("/") as separators.

Example: AAAAA/BBBBB

Send command BBBBB followed by AAAAA.

Commands separated by "/" are sent at intervals of approximately 250 ms.

(9) Using the ID function

This software assigns an ID to each test sample, and records test data together with the ID. The ID function offers the optional settings specified below. For setting changes, select [**Settings**]-[**Preferences**] menu to display the initial-setting dialog log.

- Automatic increment of ID numbers
The ID number automatically increases by 1 increment after the completion of a test.
- Numerical-digit designation
The number of digits of the numerical part of the ID can be specified. Non-specified digits are set to "0."
- Addition of a character string
A character string can be added at the beginning of the ID. For example, "A0108-" can be added to the ID to indicate "manufacturing No. + year + month." In this example, the ID is "A0108-000001."
- Input of an ID after testing
An ID is normally input prior to a test. However, it is possible to input (check) an ID after a test.

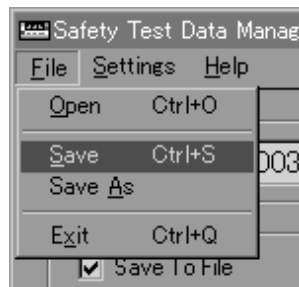
(10) Saving and Loading Test Settings

Test condition settings can be saved to files.

When there are several conditions of tests, the settings can be saved to different files, and by loading the appropriate setting file for a test, the test settings can be easily switched.

To save, select [**File**]-[**Save As**] or [**File**]-[**Save**].

Saved setting files have the extension ".had" (that is, "filename.had").



To load saved settings, select [**File**]-[**Open**].

Chapter 7

Other Information

7.1 Troubleshooting

Q. Communication fails when a notebook PC is used.

A.

The serial (COM) port of the notebook PC may be inactive. In some notebook PCs, the COM port is used for infrared communication, and the serial-port connector on the unit may not be functional. Refer to the operation manual of the notebook PC, and enable use of the serial port.

Q. No serial (COM) port is provided on the notebook PC.

A.

Use a commercially available USB-serial converter (conversion cable). Use of a multi-channel type enables the connection of multiple testers. Proper operation of the following product with the software has been confirmed:

CONTEC Model COM-4 (USB)

Q. When the Start Test button is clicked on, the screen displays the error message "Enable command start using test instrument's Option settings," and the software does not start tests.

A.

In the safety tester's Option settings, there is a setting item for enabling and disabling command start.

Enable the command start option. For details, refer to the instruction manual of each tester.

Q. When the Start Test button is clicked on, the screen displays the error message "Communication Error. Check the following," and the software does not start tests.

A.

1. Confirm that the power switches of the testers are turned on.
2. Confirm that the RS-232C crossing cables are connected to the PC's COM ports and testers.
3. Select [**Settings**]-[**Test Settings**] menu, and then check the tester settings in the displayed setting dialog box.
4. Confirm that the connected testers correspond with the testers specified in the test-sequence settings.
5. Select [**Settings**]-[**Preferences**] menu. In the displayed setting dialog box, make sure there is no check mark in the box for [**Use PLC to change the connection**], if no PLC is connected.
6. Select [**Settings**]-[**COM Port**] menu, and then check the COM-port settings in the displayed setting dialog box.

7.2 Support

Contact us for any trouble, request or comments by e-mail.
E-mail: os-com@hioki.co.jp HIOKI E.E. CORPORATION, International
Sales and
Marketing Section

**HIOKI 9267 SAFETY TEST DATA MANAGEMENT
SOFTWARE**

Instruction Manual

Publication date: November 2005 Revised edition 3

Edited and published by HIOKI E.E. CORPORATION
Technical Support Section

All inquiries to International Sales and Marketing Department

81 Koizumi, Ueda, Nagano, 386-1192, Japan

TEL: +81-268-28-0562 / FAX: +81-268-28-0568

E-mail: os-com@hioki.co.jp

URL <http://www.hioki.co.jp/>

Printed in Japan 9267A981-03

-
-
- All reasonable care has been taken in the production of this manual, but if you find any points which are unclear or in error, please contact your supplier or the International Sales and Marketing Department at HIOKI headquarters.
 - In the interests of product development, the contents of this manual are subject to revision without prior notice.
 - Unauthorized reproduction or copying of this manual is prohibited.
-
-

HIOKI

HIOKI E. E. CORPORATION

HEAD OFFICE

81 Koizumi, Ueda, Nagano 386-1192, Japan
TEL +81-268-28-0562 / FAX +81-268-28-0568
E-mail: os-com@hioki.co.jp / URL <http://www.hioki.co.jp/>

HIOKI USA CORPORATION

6 Corporate Drive, Cranbury, NJ 08512, USA
TEL +1-609-409-9109 / FAX +1-609-409-9108

9267A981-03 05-11H



Printed on recycled paper

T  **USA**
Equipment
.NETTM
1-877-742-TEST (8378)