

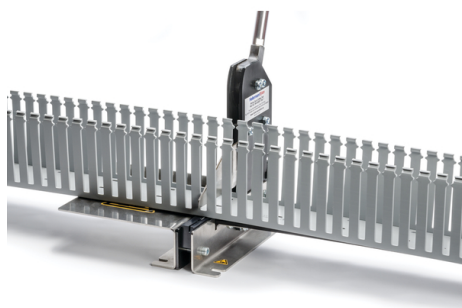
Specification Sheet

Part Number: 904-00295

Hand lever is ergonomically designed to reduce user fatigue. Measuring guide incorporates both imperial and metric values which eliminates the need for secondary measurement devices.

Long lasting, hardened blade produces burr-free edges and improves productivity by eliminating the need for filing the edges after cutting.

Includes replacement blade and safety guide to ensure longevity, safety and proper use of the tool (replacements for both can also be purchased separately).



Wiring Duct Cutting Tool, 1/pkg

| | |
|---------------------|---|
| Article Number | 904-00295 |
| Type | Wiring Duct Cutting Tool |
| Color | Metal (ML) |
| Quantity Per | EA |
| Product Description | The HellermannTyton bench mounted wiring duct cutting tool is used to accurately measure and cut all HellermannTyton slotted and high density slotted wiring duct, solid dividers and covers. |
| Short Description | Wiring Duct Cutting Tool, 1/pkg |

Global Part Name Wiring Duct Cutting Tool-MET-ML

Material Metal (MET)

Material Shortcut MET

Halogen Free No

Reach Compliant (Article 33) No

Package Quantity (Imperial) 1

Package Quantity (Metric) 1

Customs Number 8205599000

© 2023 HellermannTyton. All Rights Reserved.

[Contact Us](#)

[RoHS/WEEE Compliance](#)

[Disclaimer](#)

[Terms and Conditions](#)