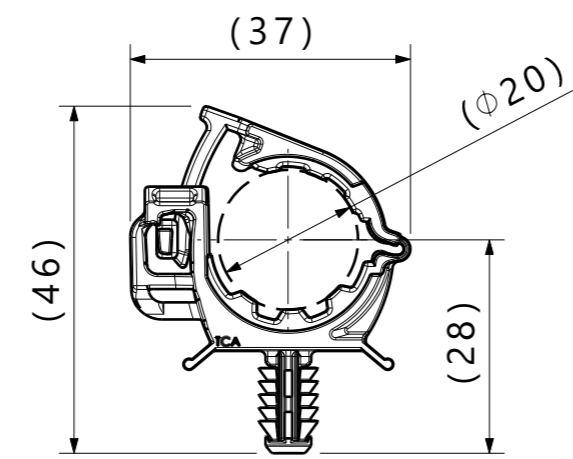
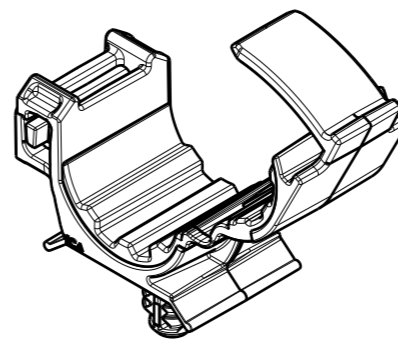


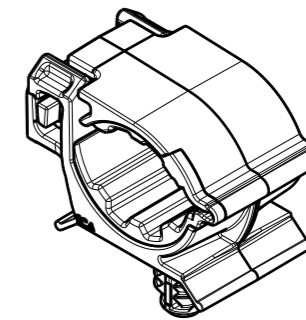
Reference view
Closed minimum bundle diameter



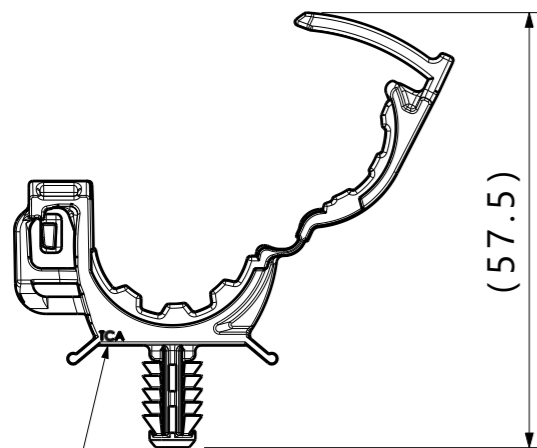
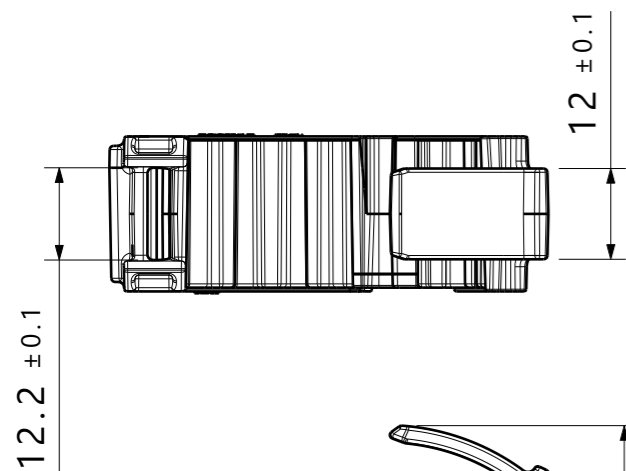
Reference view
Closed maximum bundle diameter



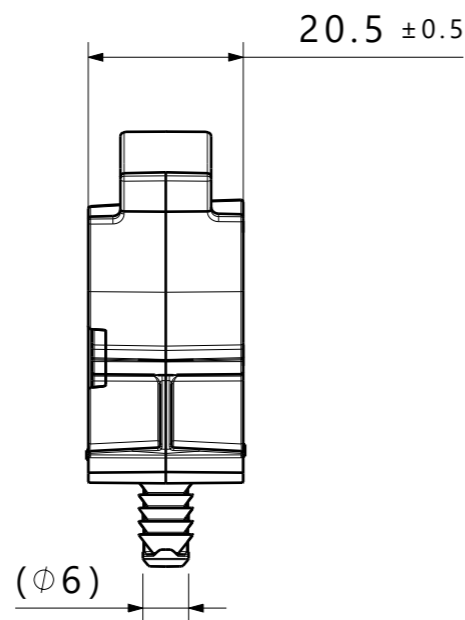
Isometric view
Open



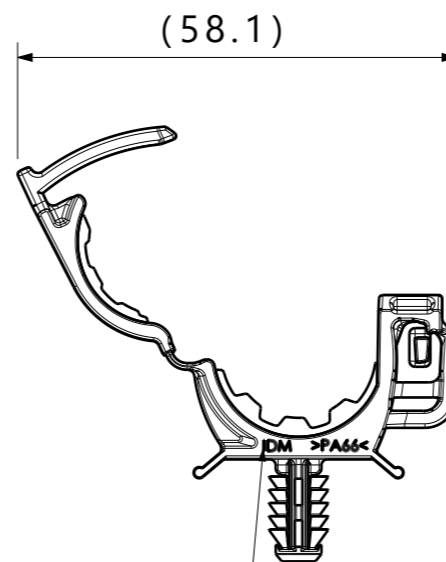
Isometric view
Closed minimum bundle diameter



'TCA' to be shown on this surface



Cavity ID and country of origin
to be shown on this surface



Reference:

Performance requirements at dry as molded:

1. Fir tree push in force: 45 newtons (10 lbf) max in the applicable nominal hole size and a plate thickness of 1.8mm.
2. Fir tree pull out force: 110 newtons (25 lbf) min in the applicable nominal hole size and a plate thickness of 1.8mm.

Notes:

1. Material: See chart
2. Material color: See chart
3. Maximum percent regrind permissible: 25% for PA66 only
4. Max allowable flash to be: 0.5mm
5. Max allowable mismatch to be: 0.1mm
6. Sheet metal thickness range: 0.60mm - 6.00mm
7. Applicable hole size:
A. 6.5mm +0.5/- 0.4

Global Part Description	Material	Color
SGROC15.5-20FT6.5-PA66HIRHSUV/TPE-BK	PA66HIRHSUV TPE	Black

Revision Level		
Drawing	State	Part
01.1	Design Release	-
Changed	Date (YYYY/MM/DD)	
Hitch	2024/05/16	
Approved	Date (YYYY/MM/DD)	
Karabon	2024/05/16	

Revision Record	
ECN	311153
All drawing revisions are stored in CAD PDM database	

The copyright of this drawing is reserved by HellermannTyton.

Units
mm

Drawn
Karabon
Date (YYYY/MM/DD)
2023/08/10
Approved
Van Hulst
Date (YYYY/MM/DD)
2023/08/10

HellermannTyton
www.HellermannTyton.com

01.1

Title
Overmolded Ratchet O-Clamp, 15.5-20mm, with 6.5mm fir tree

Scale 1:1
Global Project Number 23-0111
Drawing-No
23-0111-001-CSU
Format A3
Sheet 1 / 1