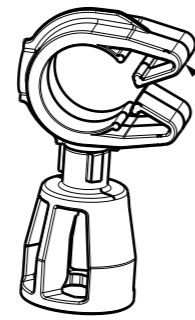
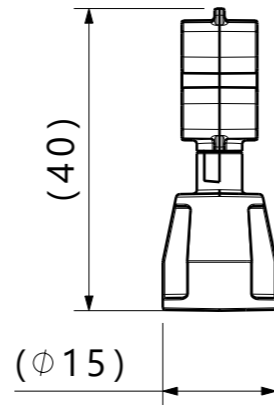
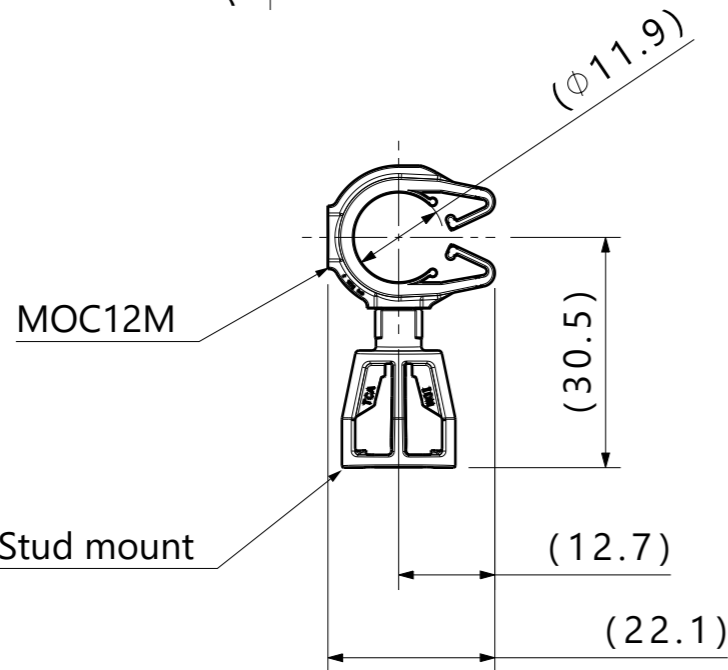
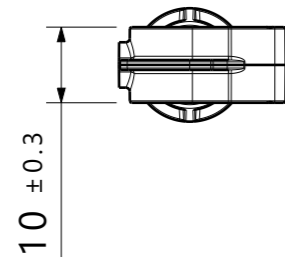


Isometric view



Isometric view
Rotated

Clip rotates
360 degrees**



Reference:

Performance requirements at dry as molded:

1. Stud mount push on force: 45 newtons (10 lbf) max on each applicable stud size.
2. Stud mount pull off force: 110 newtons (25 lbf) min on each applicable stud size.

Notes:

1. Material: See chart
2. Material color: See chart
3. Maximum percent regrind permissible: 25%
4. Max allowable flash to be: 0.25mm
5. Max allowable mismatch to be: 0.1mm
6. Applicable stud size:
 - A. M5 x 0.8
 - B. T5
 - C. M6 x 1
 - D. T6

* Recommended sizes may differ depending on the application, product requirements, and materials used.

** Rotational orientation of clips upon delivery is not controlled

*** Patent: US D822,476 S, EU 003864313, CN 304373914 S

Diameter Range*		
Harness	Soft Tube/Hose	Hard Pipe/Tube
11.5mm-13.0mm	10.5mm-13.0mm	12.0mm-13.8mm

Global Part Description	MOC12M***			Stud Mount		
	Drawing	Material	Color	Drawing	Material	Color
SMFMOC12M-PA66HIRHSUV-BK	16-0319-000-CSU	PA66HIRHSUV	Black	19-0295-001-CSU	PA66HIRHSUV	Black

Revision Level			Revision Record	
Drawing	State	Part	ECN-016984	
00.0	Design Release	-		
Changed	Date (YYYY/MM/DD)			
Klos	2022/04/29			
Approved	Date (YYYY/MM/DD)			
Cottrill	2022/04/29			



The copyright of this drawing is reserved by HellermannTyton.

All drawing revisions are stored in CAD PDM database

Drawn	Date (YYYY/MM/DD)
Klos	2022/04/29
Approved	Date (YYYY/MM/DD)
Cottrill	2022/04/29

Title	MOC12M coupled with a M5/M6 stud mount	Scale	1:1
Drawing-No		Global Project Number	19-1644
19-1644-001-CSU		Format	A3
		Sheet	1 / 1

HellermannTyton
www.HellermannTyton.com