

## Specification Sheet

Part Number: 181-42006

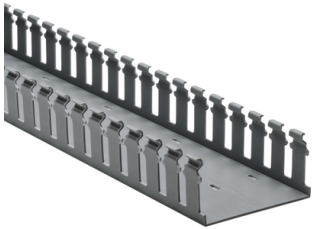
Strong fingers prevent unwanted breaking. Fingers are easily deflected outward, allowing ready positioning of the wires within the slotted wall duct.

Restricted opening design in the finger of the duct helps keep wires in place.

Restricted opening prevents unintended removal of wires and permits any individual wire to be traced without disconnection.

Supplied with mounting holes to streamline installation.

Optional covers enhance protection and appearance.



Slotted Wall Wiring Duct, 4" x 2", Non-Adhesive, PVC, White, 30ft/Box

Article Number 181-42006

Type SL4X2

Color White (WH)

Quantity Per box

Product Description Pro-Duct slotted wall wiring duct features break-away fingers which provide additional access for wire leads. Each section of the duct is provided with two score lines. The upper score line is used to break away fingers when a greater opening is required. The lower score line allows the sidewall to be smoothly cut for joints and Ts.

Short Description	Slotted Wall Wiring Duct, 4" x 2", Non-Adhesive, PVC, White, 30ft/Box
Global Part Name	SL4X2-PVC-WH
Length L (Imperial)	6.0
Length L (Metric)	1.83
Width W (Imperial)	4.0
Width W (Metric)	101.6
Height H (Imperial)	2.07
Height H (Metric)	52.6
Mounting Hole Centers (Imperial)	4.0
Material	Polyvinylchloride (PVC)
Material Shortcut	PVC
Flammability	Self-extinguishing
Halogen Free	No
Operating Temperature	+122°F (+50°C)

Reach Compliant (Article 33)	No
ROHS Compliant	Yes
Certification/Specification	EN 50085-1:2005 + A1:2013 UL CSA EN 50085-2-3_1A
UL Recognized (US)	Yes
Package Quantity (Imperial)	30.0
Package Quantity (Metric)	9.14
Customs Number	3925900000

© 2023 HellermannTyton. All Rights Reserved.

[Contact Us](#)

[RoHS/WEEE Compliance](#)

[Disclaimer](#)

[Terms and Conditions](#)