

Specification Sheet

Part Number: 181-13009

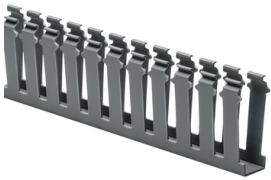
Strong fingers prevent unintended breaking.

Fingers are easily deflected outward, allowing easier positioning of the wires.

Restricted opening prevents unintended removal of wires and permits any individual wire to be traced without disconnection.

Nonpermanent adhesive allows repositioning prior to final installation.

Optional covers snap on and off easily, and their nonslip lining ensures they stay in place even under vibration.



Slotted Wall Wiring Duct, 1" x 3", Adhesive, PVC, Gray, 30ft/Box

Article Number 181-13009

Type SLA1X3

Color Gray (GY)

Quantity Per box

Product Description HellermannTyton Slotted Wall Duct features breakaway fingers that provide additional access for wire leads. Each section of the duct is provided with two score lines. The upper score line is used to break away fingers when a wider opening is required. The lower score line allows the sidewall to be smoothly cut for joints and Ts. Pressure-sensitive, rubber-based adhesive backing aids in temporary positioning.

Short Description	Slotted Wall Wiring Duct, 1" x 3", Adhesive, PVC, Gray, 30ft/Box
Global Part Name	SLA1X3-PVC-GY
Length L (Imperial)	6.0
Length L (Metric)	1.83
Width W (Imperial)	1.0
Width W (Metric)	25.4
Height H (Imperial)	3.07
Height H (Metric)	77.9
Mounting Hole Centers (Imperial)	4.0
Material	Polyvinylchloride (PVC)
Material Shortcut	PVC
Flammability	Self-extinguishing
Halogen Free	No
Operating Temperature	+122°F (+50°C)

Reach Compliant (Article 33)	No
ROHS Compliant	Yes
Certification/Specification	EN 50085-1:2005 + A1:2013 CSA EN 50085-2-3_1A UL
UL Recognized (US)	Yes
Package Quantity (Imperial)	30.0
Package Quantity (Metric)	9.14
Customs Number	3925900000

© 2023 HellermannTyton. All Rights Reserved.

[Contact Us](#) [RoHS/WEEE Compliance](#) [Disclaimer](#) [Terms and Conditions](#)