

## Specification Sheet

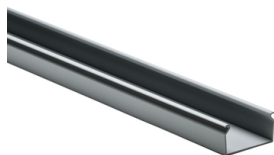
Part Number: 181-00499

Solid wall construction provides excellent coverage to keep wires clean. Durable material protects wires from damage, with long-lasting performance.

Standard colors complement or contrast light and dark environments.

Nonpermanent adhesive allows repositioning prior to final installation.

Optional covers snap on and off easily, and their nonslip lining ensures they stay in place even under vibration.



Solid Wall Wiring Duct, 2" x 1", Adhesive, PVC, Gray, 120ft/Carton

Article Number 181-00499

Type SDA2X1

Color Gray (GY)

Quantity Per carton

Product Description HellermannTyton Solid Wall Wiring Duct efficiently routes and protects wire. Solid wall wiring duct is designed for straight wire runs where breakouts are not required. Solid wall wiring duct is manufactured from high-impact, rigid PVC; comes in standard colors of white, gray and black; and is available in 6-foot lengths.

Short Description Solid Wall Wiring Duct, 2" x 1", Adhesive, PVC, Gray, 120ft/Carton

Global Part Name	SDA2X1-PVC-GY
Length L (Imperial)	6.0
Length L (Metric)	1.83
Fixation Method	Adhesive
Width W (Imperial)	2.0
Width W (Metric)	50.8
Height H (Imperial)	1.06
Height H (Metric)	26.9
Mounting Hole Centers (Imperial)	4.0
Material	Polyvinylchloride (PVC)
Material Shortcut	PVC
Flammability	Self-extinguishing
Halogen Free	No
Operating Temperature	+122°F (+50°C)

Reach Compliant (Article 33)	No
ROHS Compliant	Yes
Certification/Specification	EN 50085-1:2005 + A1:2013 EN 50085-2-3_1A CSA UL
UL Recognized (US)	Yes
Package Quantity (Imperial)	120.0
Package Quantity (Metric)	36.58
Customs Number	3925900000

© 2023 HellermannTyton. All Rights Reserved.

[Contact Us](#) [RoHS/WEEE Compliance](#) [Disclaimer](#) [Terms and Conditions](#)