

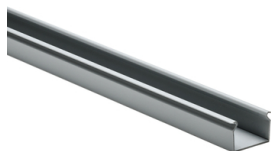
Specification Sheet

Part Number: 181-00325

Solid wall construction provides excellent coverage to keep wires clean. Durable material protects wires from damage, with long-lasting performance.

Available standard colors complement or contrast in light and dark environments.

Optional covers snap on and off easily, and are provided with a non-slip lining that insures the covers remain in place during vibration.



Solid Wall Wiring Duct, 1.5" x 1", Non-Adhesive, PVC, Gray, 30ft/Box

Article Number 181-00325

Type SD1.5X1

Color Gray (GY)

Quantity Per box

Product Description HellermannTyton Solid Wall Wiring Duct efficiently routes and protects wire. Solid wall wiring duct is designed for straight wire runs where breakouts are not required. Solid wall wiring duct is manufactured from high-impact, rigid PVC; comes in standard colors of white, gray and black; and is available in 6-foot lengths.

Short Description Solid Wall Wiring Duct, 1.5" x 1", Non-Adhesive, PVC, Gray, 30ft/Box

Global Part Name SD1.5X1-PVC-GY

Length L (Imperial) 6.0

Length L (Metric) 1.83

Width W (Imperial) 1.5

Width W (Metric) 38.1

Height H (Imperial) 1.06

Height H (Metric) 26.9

Mounting Hole Centers (Imperial) 4.0

Material Polyvinylchloride (PVC)

Material Shortcut PVC

Flammability Self-extinguishing

Halogen Free No

Operating Temperature +122°F (+50°C)

Reach Compliant (Article 33) No

ROHS Compliant	Yes
Certification/Specification	UL EN 50085-1:2005 + A1:2013 EN 50085-2-3_1A CSA
UL Recognized (US)	Yes
Package Quantity (Imperial)	30.0
Package Quantity (Metric)	9.14
Customs Number	3925900000

© 2023 HellermannTyton. All Rights Reserved.

[Contact Us](#) [RoHS/WEEE Compliance](#) [Disclaimer](#) [Terms and Conditions](#)