

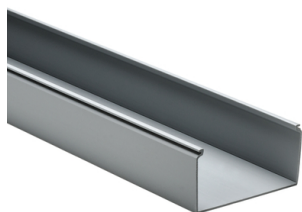
## Specification Sheet

Part Number: 181-00185

Solid wall construction provides excellent coverage to keep wires clean. Durable material protects wires from damage, with long-lasting performance.

Available standard colors complement or contrast in light and dark environments.

Optional covers snap on and off easily, and are provided with a non-slip lining that insures the covers remain in place during vibration.



Solid Wall Wiring Duct, 4" x 2", Non-Adhesive, PVC, Gray, 30ft/Box

Article Number 181-00185

Type SD4X2

Color Gray (GY)

Quantity Per box

**Product Description** HellermannTyton's Pro-Duct, Solid Wall wiring duct efficiently routes and protects wire and cable. Solid Wall wiring duct it designed for straight wire runs where break outs are not required. Pro-Duct, Solid Wall wiring duct is manufactured from high impact, rigid PVC, comes in standard colors of white, gray and black, and is available in 6 foot lengths.

**Short Description** Solid Wall Wiring Duct, 4" x 2" , Non-Adhesive, PVC, Gray, 30ft/Box

Global Part Name SD4X2-PVC-GY

Length L (Imperial) 6.0

Length L (Metric) 1.83

Width W (Imperial) 4.0

Width W (Metric) 101.6

Height H (Imperial) 2.07

Height H (Metric) 52.6

Mounting Hole Centers (Imperial) 4.0

Material Polyvinylchloride (PVC)

Material Shortcut PVC

Flammability Self-extinguishing

Halogen Free No

Operating Temperature +122°F (+50°C)

Reach Compliant (Article 33) No

ROHS Compliant	Yes
Certification/Specification	EN 50085-2-3_1A EN 50085-1:2005 + A1:2013 CSA UL
UL Recognized (US)	Yes
Package Quantity (Imperial)	30.0
Package Quantity (Metric)	9.14
Customs Number	3925900000

© 2023 HellermannTyton. All Rights Reserved.

[Contact Us](#) [RoHS/WEEE Compliance](#) [Disclaimer](#) [Terms and Conditions](#)