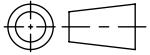
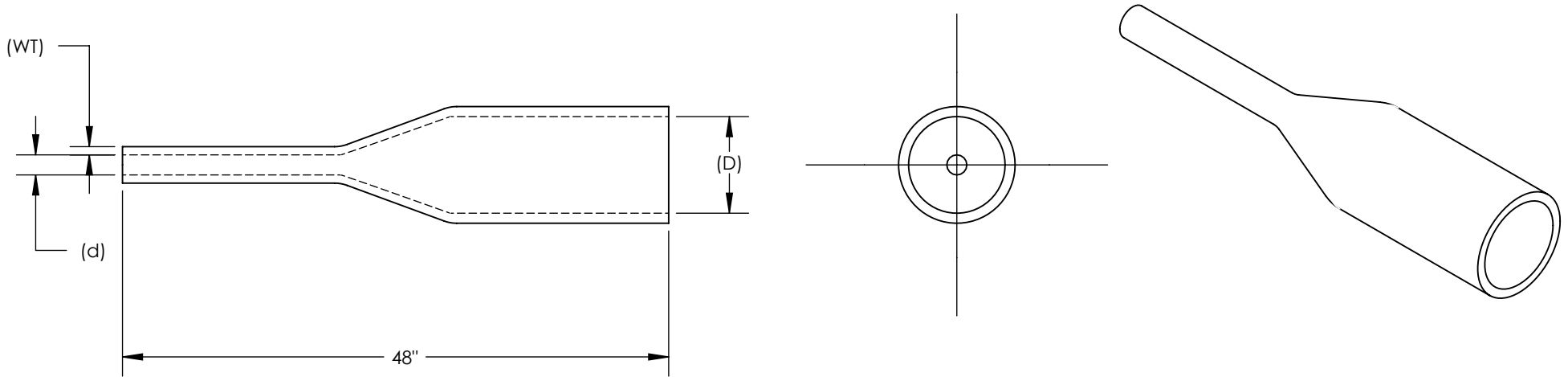


SW2015



Revision level			Revision Record	Changed	Date	Approved	Date
Drawing	State	Part					
01.1	Design Release		SEE ECN# 013647	GRW	12/9/2016	KAC	12/9/2016



NOTES:

1. SHRINK RATIO 4:1
2. LONGITUDINAL CHANGE AFTER SHRINKAGE -10% MAX
3. MINIMUM SHRINK TEMPERATURE 248° F (120° C)
4. OPERATING TEMPERATURES -67° F TO 230° F (-55° C TO 110° C)
5. DIELECTRIC STRENGTH >20KV/MM ACCORDING TO ASTM D 150
6. SOFTENING POINT ADHESIVE 185° F (85° C)
7. ROHS AND HALOGEN-FREE

Type	Shrink Ratio	Nominal Trade Size	Supplied Diameter (D)		Recovered Diameter (d)		Wall Thickness Recovered (WT)		Color	Package Quantity
		in	in	mm	in	mm	in	mm		(# of sticks per PACK)
48 Inch Sticks										
TREDUX MA47-48ST-12/3	Up to 4:1	1/2	0.470	12.0	0.118	3.0	0.08	2.00	Black	6
TREDUX MA47-48ST-19/6	Up to 4:1	3/4	0.748	19.0	0.236	6.0	0.09	2.50	Black	10
TREDUX MA47-48ST-30/8	Up to 4:1	1-1/4	1.181	30.0	0.314	8.0	0.09	2.50	Black	6
TREDUX MA47-48ST-40/12	Up to 4:1	1-1/2	1.570	40.0	0.470	12.0	0.09	2.50	Black	4
TREDUX MA47-48ST-50/16	Up to 4:1	2	1.969	50.0	0.620	16.0	0.1	2.70	Black	2
TREDUX MA47-48ST-63/19	Up to 4:1	2-1/2	2.480	63.0	0.750	19.0	0.11	2.80	Black	2
TREDUX MA47-48ST-75/22	Up to 4:1	3	2.950	75.0	0.860	22.0	0.12	3.00	Black	2
TREDUX MA47-48ST-95/30	Up to 4:1	3-3/4	3.740	95.0	1.181	30.0	0.12	3.00	Black	1

Material
**POLYOLEFIN,
 ADHESIVE-LINED
 CROSS LINKED**

Units: **inches**
 Dimension without tolerances details to:
 .xxxx = ± .0005
 .xxx = ± .005
 .xx = ± .01
 .x = ± .03
 None = ± .06
 ∠ = ± 0.5°
 Dimension Formatted in/[mm]

The copyright of this drawing is reserved by HellermannTyton. It is issued on condition that it is not reproduced, copied, or disclosed to a third party, either wholly or in part, without the consent of HellermannTyton.

Drawn	GRW	12/9/2016
Approved	KAC	12/9/2016
HellermannTyton		
North America Email: corp@htamericas.com Web: www.hellermann.tyton.com		

Article/Type-No	MA47 SERIES	Scale
Title	HEAT SHRINK TUBING, 4:1 SHRINK RATIO, ADHESIVE-LINED MEDIUM WALL	Project Number PRP 16-1987
Drawing-No	PRODUCTION : Phase	Format AH
16-1987-001-CSU		Sheet 1/1