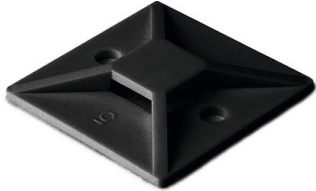


Specification Sheet

Part Number: MB50C2



Compact size fits most mounting applications.

Simple to install with a screw or rivet.

Single hole attachment with two-way entry for cable tie.

Screw Mount Cable Tie Base, 1.49 x 1.49", 0.35" Max Tie Width, 0.19" Hole Dia, PA66, Black, 100/pkg

Article Number 151-28500

Type MB5

Color Black (BK)

Quantity Per bag

Product Description These cable tie mounts are compact in size. They are designed for simple yet robust installation. They pair with a cable tie for mounting applications including telecom equipment, switchgear and control cabinets.

Short Description Screw Mount Cable Tie Base, 1.49 x 1.49", 0.35" Max Tie Width, 0.19" Hole Dia, PA66, Black, 100/pkg

Global Part Name MB5-PA66-BK

Length L (Imperial)	1.49
Length L (Metric)	37.7
Fixation Method	Screw Mount
Width W (Imperial)	1.49
Width W (Metric)	37.7
Cable Ties	T18 - T150
Height H (Imperial)	.25
Height H (Metric)	6.20
Cable Tie Width Max (Imperial)	0.35
Cable Tie Width Max (Metric)	8.9
Mounting Hole Diameter D (Imperial)	0.19
Mounting Hole Diameter D (Metric)	4.8 mm
Mounting Hole Diameter D Max (Metric)	4.8
Mounting Hole Centers (Imperial)	1.0
Material	Polyamide 6.6 (PA66)

Material Shortcut	PA66
Flammability	UL 94 V-2
UV Resistant (Yes/No)	No
Use Conditions	For Indoor and Outdoor Use
Operating Temperature	-40°F to +185°F (-40°C to +85°C)
Reach Compliant (Article 33)	No
ROHS Compliant	Yes
Certification/Specification	UL
UL Recognized (US)	Yes
UL Recognized (US and Canada)	Yes
Package Quantity (Imperial)	100
Package Quantity (Metric)	100
Customs Number	3926909988