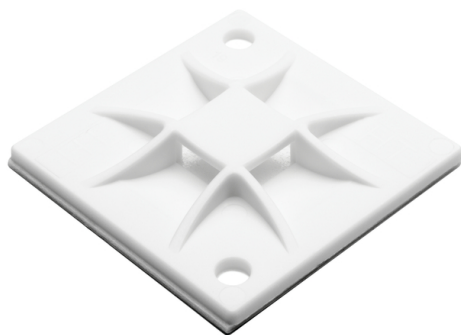


Specification Sheet

Part Number: 151-10906



2- or 4-way entry options for the Q Tie, offering flexibility and stability

Q Tie Mount with Adhesive, 1.6" x 1.6" x 0.26", 4 way entry for Q18 thru Q120 ties, PA66, White, 50/pkg

Article Number 151-10906

Type QM40A

Color Natural (NA)

Quantity Per bag

Product Description Q Mounts are designed to work exclusively with the Q Tie cable tie series. This mounting component is available with adhesive or can be secured with screws. The Q Mount allows either a 2- or 4-way entry for the Q Tie, providing a quick and simple insertion into the mount. Once in place, the Q Tie will not slip out, even in vertical mounting applications.

Short Description Q Tie Mount with Adhesive, 1.6" x 1.6" x 0.26", 4 way entry for Q18 thru Q120 ties, PA66, White, 50/pkg

Global Part Name	QM40A-PA66-NA
Length L (Imperial)	1.6
Length L (Metric)	40.0
Fixation Method	Screw Mounting and Adhesive
Width W (Imperial)	1.6
Width W (Metric)	40.0
Height H (Imperial)	0.26
Height H (Metric)	5.5
Cable Tie Width Max (Imperial)	0.31
Cable Tie Width Max (Metric)	8.4
Mounting Hole Diameter D (Imperial)	0.16
Mounting Hole Diameter D (Metric)	4.1 mm
Mounting Hole Diameter D Min (Imperial)	0.16
Mounting Hole Diameter D Max (Metric)	4.1
Mounting Hole Centers (Imperial)	1.19

Material	Polyamide 6.6 (PA66)
Material Shortcut	PA66
Adhesive	Synthetic rubber with base of polyethylene foam
Flammability	UL 94 V-2 (excluding adhesive)
Halogen Free	Yes
UV Resistant (Yes/No)	No
Adhesive Operating Temperature	-40°F to +140°F (-40°C to +60°C)
Operating Temperature	-40°F to +140°F (-40°C to +60°C)
Reach Compliant (Article 33)	Yes
ROHS Compliant	Yes
Package Quantity (Imperial)	50
Package Quantity (Metric)	50
Customs Number	3926909988

