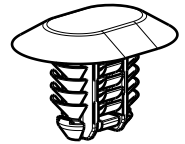
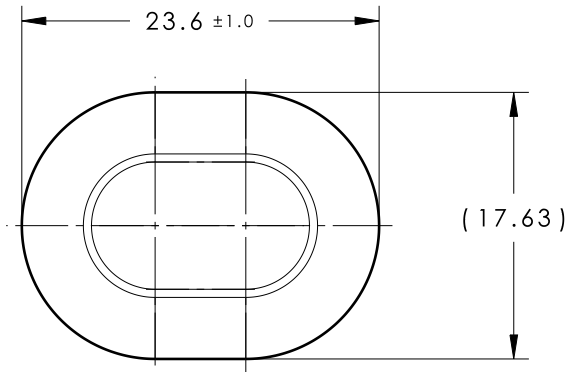


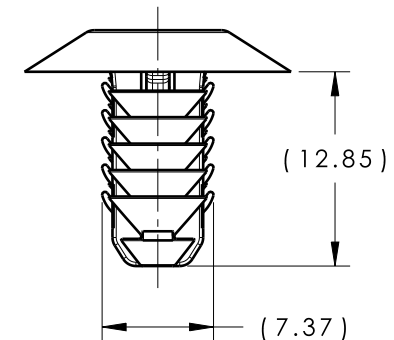
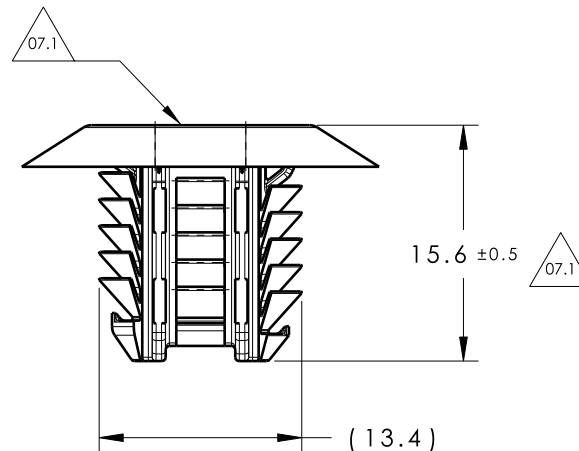
CATIA V5



| Revision Level |                |      | Revision Record | Changed | Date     | Approved | Date     |
|----------------|----------------|------|-----------------|---------|----------|----------|----------|
| Drawing        | State          | Part |                 |         |          |          |          |
| 07.1           | Design Release | B    | SEE ECN# 012593 | CJR     | 02/27/14 | SJA      | 02/27/14 |



ISOMETRIC VIEW  
SCALE 1:1



#### REFERENCE:

PERFORMANCE REQUIREMENTS AT DRY AS MOLDED:

1. FIR TREE PUSH IN FORCE: REF. 10 LBS MAX IN EACH APPLICABLE OVAL HOLE SIZE AND A PLATE THICKNESS OF 1.8mm
2. FIR TREE PULL OUT FORCE: REF. 25 LBS MIN IN EACH APPLICABLE OVAL HOLE SIZE AND A PLATE THICKNESS OF 1.8mm
3. SHEET METAL THICKNESS RANGE: 0.60mm - 6.0mm
4. APPLICABLE OVAL HOLE SIZES:
  - A. 6.2 X 12.2mm
  - B. 6.5 X 12.5mm
  - C. 6.5 X 13.0mm
  - D. 7.0 X 12.0mm

|                                       |   |  |  |     |          |                  |                    |                |         |
|---------------------------------------|---|--|--|-----|----------|------------------|--------------------|----------------|---------|
| Material<br>PA66HIRHS<br>COLOR: BLACK | Units <b>millimeters</b><br><br>Tolerance defined on each dimension | The copyright of this drawing is reserved by HellermannTyton. It is issued on condition that it is not reproduced, copied or disclosed to a third party, either wholly or in part, without the consent of HellermannTyton. | Drawn  | SJA | 10/07/11 | Article/Type-No  | PLUGFTOVAL         | Scale          | 2:1     |
|                                       |   |  | Approved   | PT  | 10/08/11 | Title            | OVAL FIR TREE PLUG | Project Number | 11-0746 |
|                                       |   |  | <b>HellermannTyton</b><br>North America<br>Email: corp@htamericas.com<br>Web: www.hellermann.tyton.com |     |          | Drawing-No       | 11-0746-001-CSU    | Format         | AH      |
|                                       |   |  |  |     |          | PRODUCTION Phase | 07.1               | Sheet          | 1/1     |