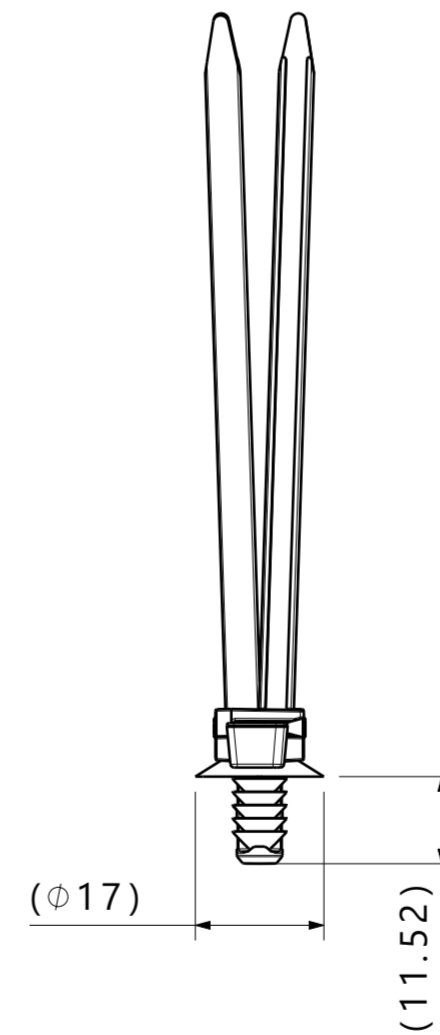
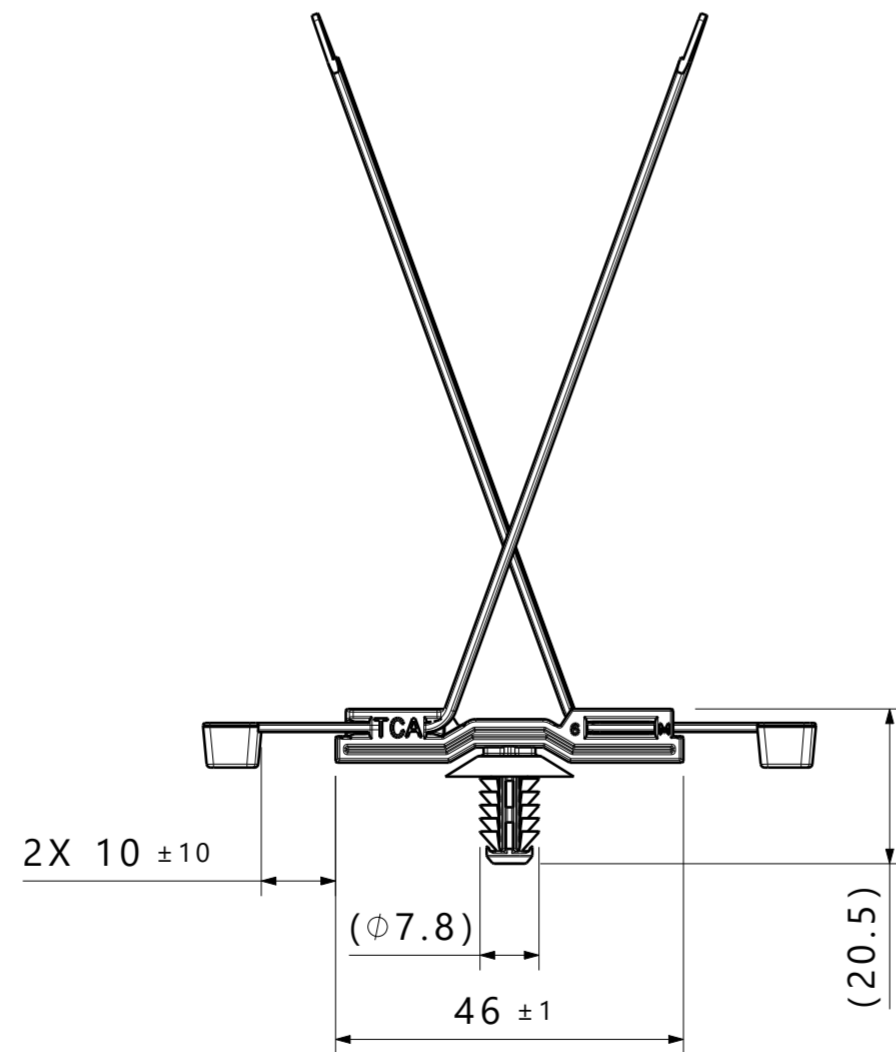


Isometric view  
Delivery condition: Assembled set



Reference:

1. Tested at the component level
2. Tested at dry as molded

Performance requirements:

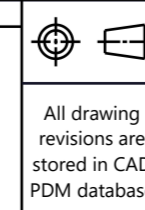
1. Fir tree push in force: 45 newtons (10 lbf) max in each applicable nominal oval hole size and a plate thickness of 1.8mm.
2. Fir tree pull out force: 110 newtons (25 lbf) min in each applicable nominal oval hole size and a plate thickness of 1.8mm.
3. Min loop tensile cable tie strength: 225newtons (50lbs)

Notes:

1. Sheet metal thickness range: 0.60mm - 6.00mm
2. Applicable hole size:
  - A. 6.5mm +0.5/- 0.4
  - B. 6.35mm +/-0.25 Hex

Global Part Description	Bundle Range	Cable ties				Mount		
		Quantity	Drawing	Material	Color	Drawing	Material	Color
T50RX2DUALSDFT6.5A-PA66HIRHSUV-BK	4mm to 50mm	2	CT2050007CST	PA66HIRHSUV	Black	20-0816-001-CSU	PA66HIRHSUV	Black

Revision Level			Revision Record		
Drawing	State	Part			
00.2	Design Release	-	016349		
Changed	Date (YYYY/MM/DD)				
Rohde	2021/02/22				
Approved	Date (YYYY/MM/DD)				
Haftarski	2021/03/17				



Units: mm  
**HellermannTyton**  
www.HellermannTyton.com

Drawn	Date (YYYY/MM/DD)	Title	Scale
Rohde	2021/02/03	2 T50R cable ties assembled with DUALSDFT6.5 mount	1:1
Approved	Date (YYYY/MM/DD)		Global Project Number 20-0816
Haftarski	2021/02/22	Drawing-No <b>20-0816-101-CSU</b>	Format A2
			Sheet 1 / 1