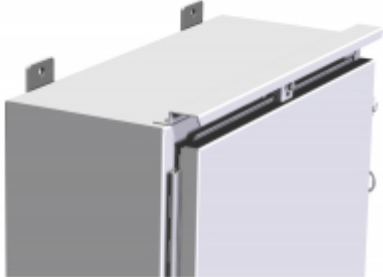




Quality Products. Service Excellence.

## Drip Shield Kit *DK Series*

### NEW SIZES



### Features

- Easily installed on Type 12, 4 and 4X wall-mount enclosures using stainless steel bolts and sealing washers (included).
- Designed not to interfere with door clamps.
- Protects door from dripping water and settling dust.
- Constructed in 14 gauge mild steel (painted) or 316 stainless steel.
- Maintains enclosure rating.

Part Numbers			
Painted Steel (Gray)	Painted Steel (Lt. Gray)	Type 316 Stainless Steel	Fits Enclosure Width (inches)
DK12GY	DK12LG	DK12S16	12.00
DK16GY	DK16LG	DK16S16	16.00
DK20GY	DK20LG	DK20S16	20.00
DK24GY	DK24LG	DK24S16	24.00
DK30GY	DK30LG	DK30S16	30.00
DK36GY	DK36LG	DK36S16	36.00
DK42GY	DK42LG	DK42S16	42.00
DK48GY	DK48LG	DK48S16	48.00
DK60GY	DK60LG	DK60S16	60.00
DK72GY	-	DK72S16	72.00

Tags: drip shield, Type 4X, Type 12, NEMA 4X, NEMA 12, sealing, water, dust

Data subject to change without notice

© 2024. Hammond Manufacturing Ltd. All rights reserved.