

# SABER™ CABLE STRIPPING TOOLS GTS-1930 • GTSD-1930



**REPLICATE EXACT CUTBACK DEPTHS  
SAFER AND FASTER THAN EVER**



**MADE IN THE USA**  
WITH GLOBAL COMPONENTS

**GREENLEE**  
A Textron Company

## GTS1930 • GTSD-1930 SABER™ CABLE STRIPPING TOOLS

### QUALITY

Replicate precise cutbacks with no additional tools

*"It pushed production to a whole new level" \**

*"The workmanship was Grade-A quality, you can't find anything better" \**

### SAFETY

Provides a safe and quick alternative to blades

*"Once I saw this tool, I don't see a need to have any blades on site anymore" - Safety Officer \**

### PRODUCTIVITY

Anyone on the site can prep cables 3X faster than with a blade

*"Turns an inexperienced worker into an experienced worker overnight" \**

\* Starr Electric

#### One-way ratchet handle (GTS-1930)

Allows user to maintain control of the cutback throughout the stripping process, ensuring blade does not come into contact with the conductor

#### Drill mounting 1/4" quick connect hex chuck (GTSD-1930)

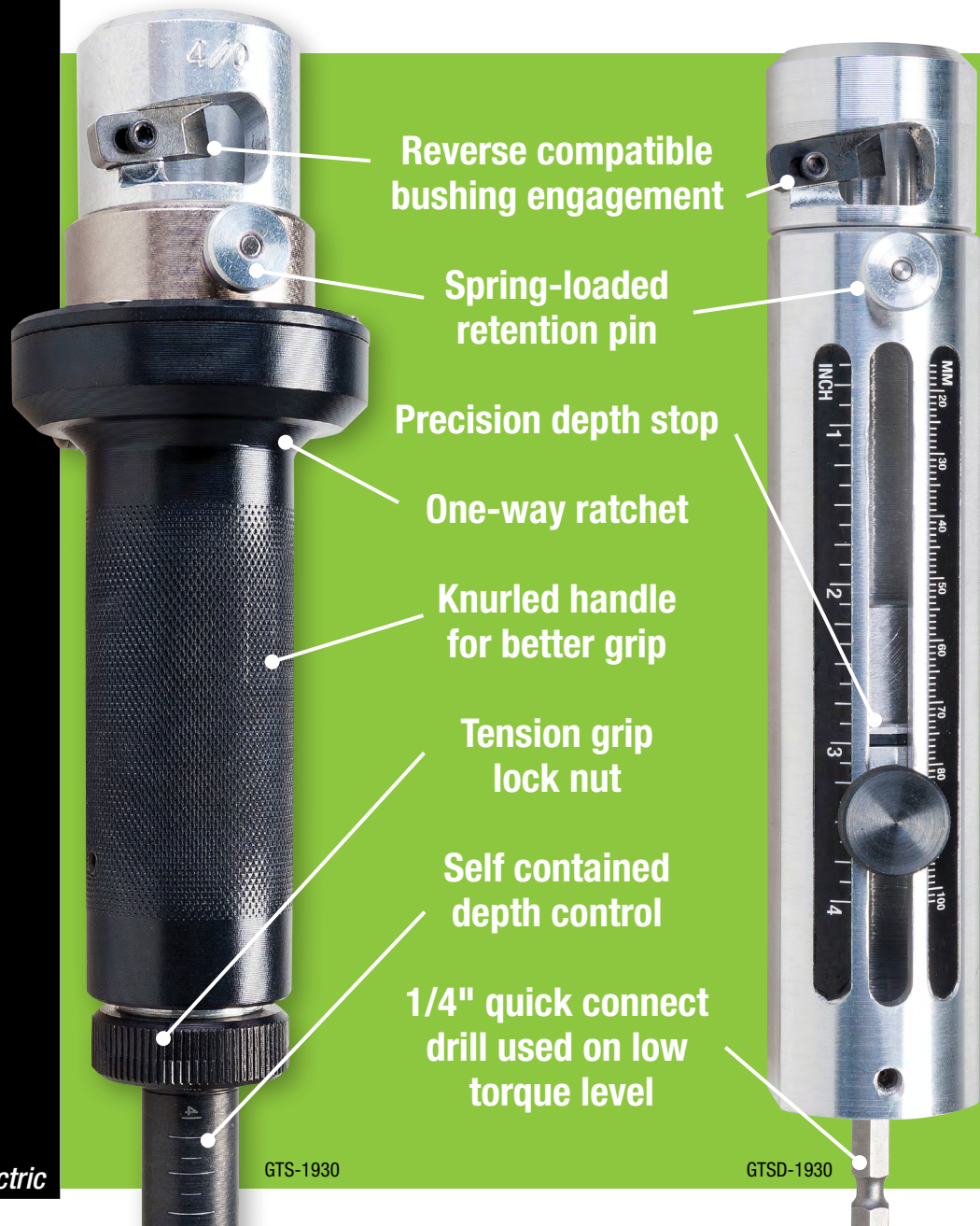
Quickly engage to a variety of battery drills

One handed attachment with most tools

Hex design allows a keyless chuck to be utilized

#### Safety factor

Replaces knives when stripping cable. Lacerations are a leading cause of recordable jobsite injuries



**FASTER. SAFER. EASIER.®**

**600 VOLT SECONDARY CABLE STRIPPER FROM GREENLEE**

FOR PRODUCT VIDEOS, DEMONSTRATIONS  
AND MORE, SCAN THIS QR CODE OR VISIT:

[www.youtube.com/GreenleeDEMO](http://www.youtube.com/GreenleeDEMO)



## ORDERING INFORMATION

CAT. NO.	UPC NO.	DESCRIPTION
GTS-1930	02731	TOOL ONLY
GTS-THHN	02735	COPPER BUSHING KIT (GTS 1930 THHN CU)
GTS-THHN-SW	03563	COPPER BUSHING KIT (SW THHN)
GTS-THHN-GC	03564	COPPER BUSHING KIT (GC THHN)
GTS-THHN-EC	03565	COPPER BUSHING KIT (EC THHN)
GTS-XHHW	02736	COPPER BUSHING KIT (GTS 1930 XHHW CU)
GTS-XHHW-SW	03566	COPPER BUSHING KIT (SW XHHW)
GTS-XHHW-GC	03567	COPPER BUSHING KIT (GC XHHW)
GTS-XHHW-EC	03568	COPPER BUSHING KIT (EC XHHW)
GTS-THXH	02738	ALUMINUM BUSHING KIT (GTS 1930 TH/XH AL)
GTS-THXH-SW	03569	ALUMINUM BUSHING KIT (SW THXH)
GTS-THXH-GC	03570	ALUMINUM BUSHING KIT (GC THXH)
GTS-THXH-EC	03571	ALUMINUM BUSHING KIT (EC THXH)
GTS-RH	02739	BUSHING KIT (GTS 1930 RH CU)
GTS-RDS	02733	DEPTH STOP REPLACEMENT KIT
GTS-CASE	03435	BUSHING KIT CASE
GTS-BRK	62854	BLADE REPLACEMENT KIT
GTSD-1930	04021	TOOL ONLY

EN - Encore Wire®

GC - General Cable

SW - Southwire®

## Identify the correct bushing for the job.

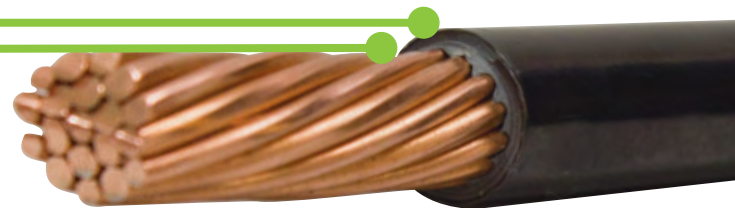
### 1. Know the cable:

- Manufacturer (i.e. = General Cable)
- Material (i.e. = Copper)
- Type (i.e. = THHN)

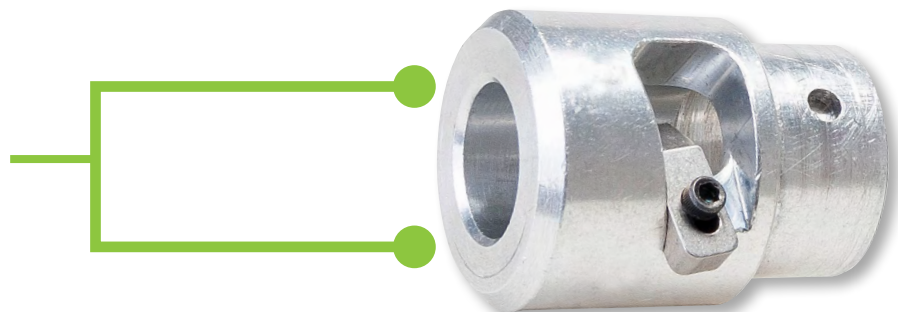
### 2. Identify the *Max Cable Diameter*



### 3. Understand the *Jacket Mil Thickness*



### 4. Compare the *Max Cable Diameter* with the *Bushing Inner Diameter* to find the optimal fit



\*\*See back page for cable sizing reference table

# \*\* ORDERING INFORMATION

## CABLE SIZING REFERENCE TABLE

CAT. NO.	UPC NO.	EQUIVALENT	MAX CABLE DIAMETER	JACKET MIL THICKNESS	MAX BUSHING INNER DIAMETER	THHN CU	XHHW CU	THHN/XHHN AL	RHW/RHH USE CU
EF-1	02646	10-27522	0.265	30	0.275	6	6	6	
T-1	03527	10-30030	0.290	45	0.300				
F-1	02647	10-32530	0.315	45	0.325	4	4	4	
R-1	02648	10-32540	0.315	60	0.325				6
E-1	02649	10-35030	0.340	45	0.350	3	3		
EF-2	02650	10-37530	0.365	45	0.375		2	2	
R-2	02651	10-37540	0.365	60	0.375				4
E-2	02652	10-40030	0.390	45	0.400	2			
T-2	03528	10-40075	0.390	95	0.400				
F-2	02653	10-42540	0.415	60	0.425			1	2
R-3	02654	10-45040	0.440	60	0.450	1	1		
EF-3	02655	10-47540	0.465	60	0.475			1/0	
T-3	03529	10-47560	0.465	80	0.475				
T-4	03530	10-50040	0.490	60	0.500	1/0	1/0	2/0	
T-5	03531	10-50060	0.490	80	0.500				1
EF-4	02656	10-52540	0.515	60	0.525	2/0	2/0		
T-6	03532	10-52550	0.515	70	0.525				
R-4	02657	10-52560	0.515	80	0.525				
E-3	02658	10-55040	0.540	60	0.550			3/0	
T-7	03483	10-55060	0.540	80	0.550				1/0
F-3	02660	10-57540	0.565	60	0.575	3/0	3/0		
R-5	02661	10-57560	0.565	80	0.575				2/0
T-8	03484	10-57575	0.565	95	0.575				
E-4	02662	10-60040	0.590	60	0.600			4/0	
R-6	02663	10-60060	0.590	80	0.600				
T-9	03485	10-60075	0.590	95	0.600				
F-4	02664	10-62540	0.615	60	0.625				
T-10	03489	10-62560	0.615	80	0.625				3/0
T-11	03490	10-62575	0.615	95	0.625				
RB-1	03572	10-65040	0.640	60	0.650	4/0	4/0		
R-7	02665	10-65060	0.640	80	0.650				
T-12	03491	10-65075	0.640	95	0.650				
E-5	02666	10-67540	0.665	60	0.675			250	
T-13	03492	10-67560	0.665	80	0.675				
T-14	03495	10-67575	0.665	95	0.675				
F-5	02675	10-70050	0.690	70	0.700	250	250		
T-15	03496	10-70060	0.690	80	0.700				4/0
T-16	03510	10-70075	0.690	95	0.700				
R-8	02676	10-72560	0.715	80	0.725			300	
EF-5	02677	10-75050	0.740	70	0.750	300	300		
T-18	03516	10-75060	0.740	80	0.750				
T-17	03515	10-75075	0.740	95	0.750				
B-1	02678	11-77550	0.765	70	0.775			350	
T-19	03517	11-77560	0.765	80	0.775				
T-20	03518	11-77575	0.765	95	0.775				250
AF-1	02679	11-80050	0.790	70	0.800	350	350	400	
T-21	03529	11-80060	0.790	80	0.800				
R-9	02680	11-80075	0.790	95	0.800				
BF-1	02681	11-82550	0.815	70	0.825				300
A-1	02682	11-85050	0.840	70	0.850	400	400		
T-22	03520	11-85060	0.840	80	0.850				
R-10	02683	11-85075	0.840	95	0.850				
E-6	02684	11-87550	0.865	70	0.875			500	
T-23	03521	11-87560	0.865	80	0.875				
R-11	02685	11-90075	0.890	95	0.900				350
F-6	02686	11-92550	0.915	70	0.925				
T-24	03522	11-92560	0.915	80	0.925				
RB-2	03573	11-95050	0.940	70	0.950	500	500		
E-7	02687	11-97550	0.965	70	0.975				
T-25	03523	11-97560	0.965	80	0.975			600	
T-26	03524	11-97575	0.965	95	0.975				
T-27	03525	11-100060	0.990	80	1.000				500
F-7	02688	11-102560	1.015	80	1.025				
R-12	02689	11-102575	1.015	95	1.025				
E-8	02690	11-105060	1.040	80	1.050	600	600	700	
T-28	03526	11-105075	1.040	95	1.050				
F-8	02693	11-107560	1.065	80	1.075			750	
F-9	02702	11-110060	1.090	80	1.100				
RB-3	03574	11-115060	1.140	80	1.150	750	750		
E-9	02703	11-117560	1.165	80	1.175				

