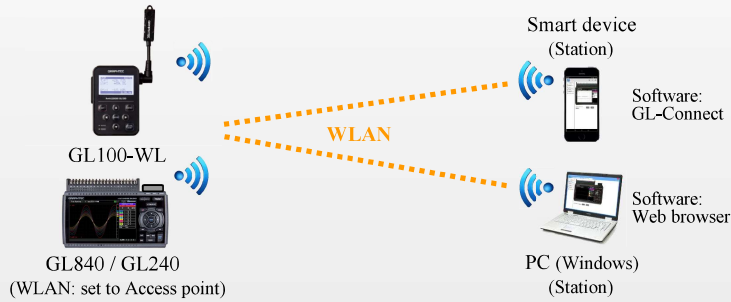


4 ways to connect via Wi-Fi

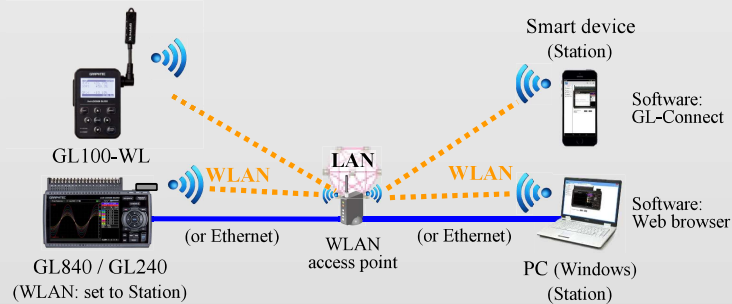
■ Pattern 1 : Peer-to-peer (Direct connection with device)



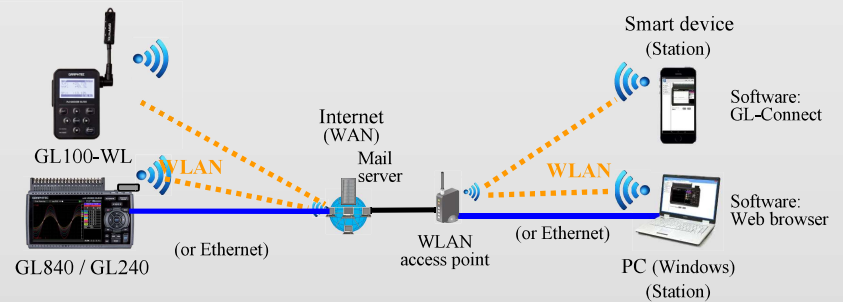
■ Pattern 2 : Connect via devices (In-Direct connection with device)



■ Pattern 3 : Local Area Network



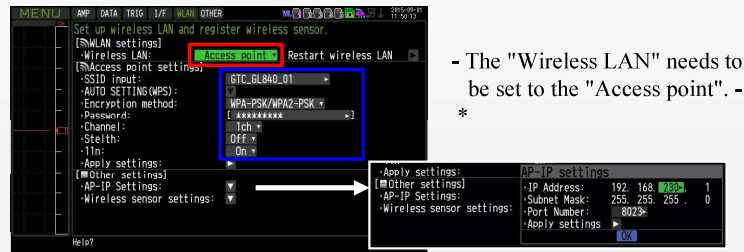
■ Pattern 4 : Internet (Outside Network)



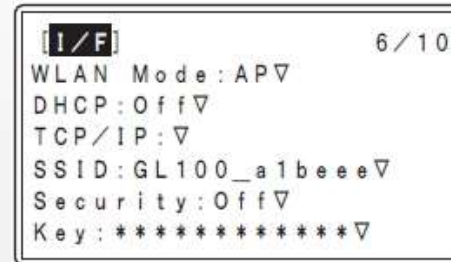
Pattern 1 : Peer-to-peer (Direct connection with device)

1. Settings on Devices

■GL840 or GL240



■GL100-WL



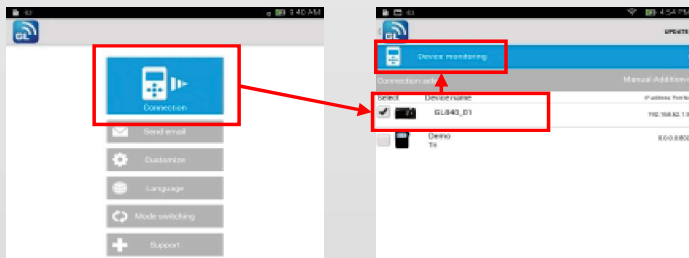
2. Settings on Software

■Connection with Smart device

1. Connects the smart device to the GL100/GL240/GL840

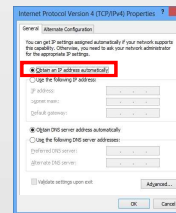


2. Starts the application software for the GL840 or GL240



■Connection with PC

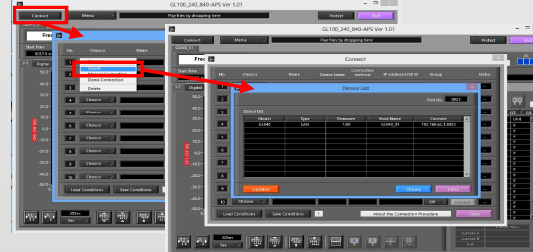
1. Configure the settings of port on PC



2. Connects the PC to GL100/GL240/GL840



3. Starts the application software for the GL100/GL240/GL840

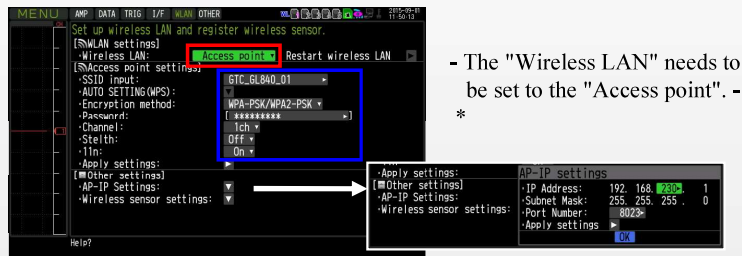


Pattern 2 : Connect via devices (Indirect connection with device)

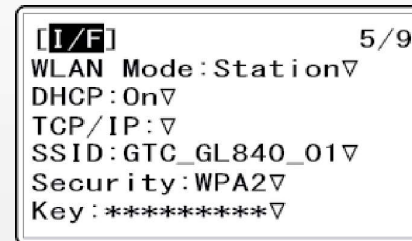
1. Settings on Devices

■GL840 or GL240

1. Configure settings on the GL840 or GL240



■GL100-WL



- The "Wireless LAN" needs to be set to the "Station".

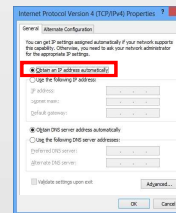
2. Settings on Software (Connecting to PC)

2. Connect the GL100-WL to GL840 or GL240



- Sets the "Device name". Or searches the GL100-WL using the "Search" button

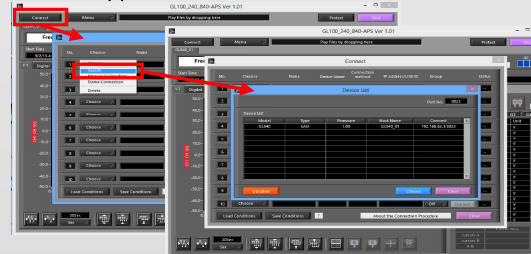
1. Configure the settings of port on PC



2. Connects the PC to GL100/GL240/GL840



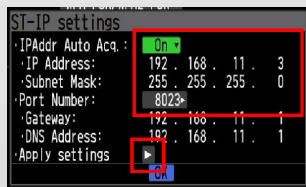
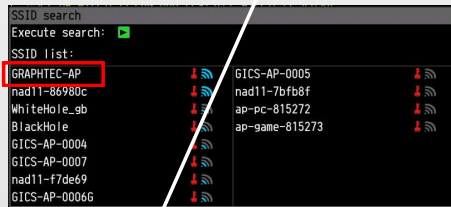
3. Starts the application software for the GL100/GL240/GL840



Pattern 3 : Local Area Network

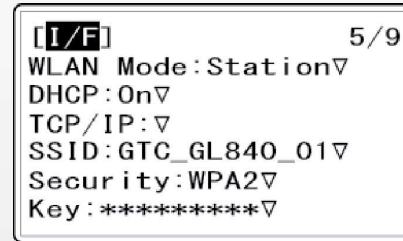
1. Settings on Devices

■GL840 or GL240



1. The "Wireless LAN" needs to be set to the "Station".
 2. Search the access point and selects the access point to be used from the "SSID list".
 3. Sets the IP address of the GL840 to the "ST-IP settings".
- When the "IPAddr Auto Acq." is "On", executes the "Apply settings" for registering the settings.
- "Off", the IP address needs to be set manually

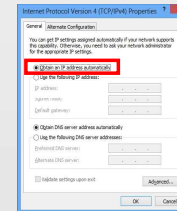
■GL100-WL



- The "Wireless LAN" needs to be set to the "Station".

2. Settings on Software (Conneting to PC)

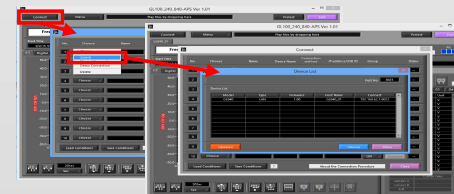
1. Configure the settings of port on PC



2. Connects the PC to GL100/GL240/GL840



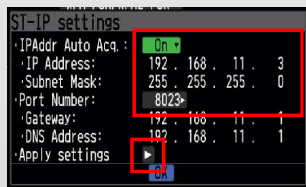
3. Starts the application software for the GL100/GL240/GL840



Pattern 4 : Internet (Outside Network)

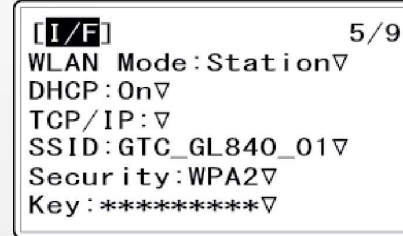
1. Settings on Devices

■GL840 or GL240



1. The "Wireless LAN" needs to be set to the "Station".
 2. Search the access point and selects the access point to be used from the "SSID list".
 3. Sets the IP address of the GL840 to the "ST-IP settings".
- When the "IPAddr Auto Acq." is "On", executes the "Apply settings" for registering the settings.
- "Off", the IP address needs to be set manually

■GL100-WL



- The "Wireless LAN" needs to be set to the "Station".

Pattern 4 : Internet (Outside Network) Part II

2. Setting on PC

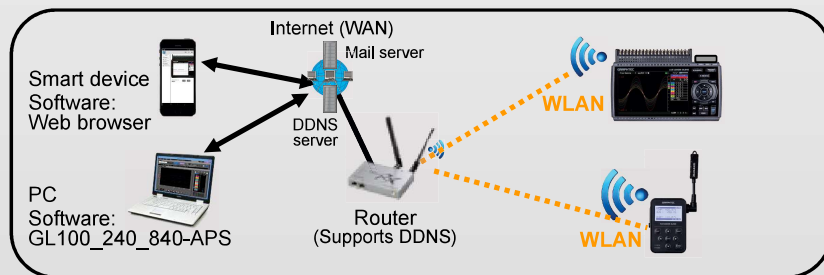
■ Settings on the smart devices

Monitoring the GL100/ GL840/GL240 (using web browser)



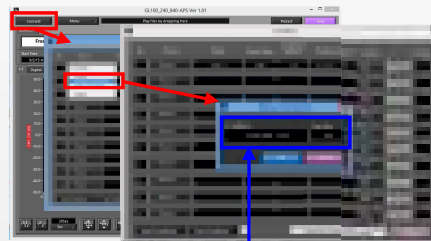
1. Connects to internet and then opens the web browser.
2. Enters the host name of the router that is connected to the GL840/GL240. (Note: The host name is assigned by the DDNS service provider.)
The port number to access the GL840/GL240 needs to be added after the host name. (Note: The port number is set on the router.)

2. Caution:



■ Settings on the PC

Monitoring the GL100/ GL240 /GL840 (using the GL100_240_840-APS)



Host name & Port number
(For example)
IP address: GL840.ddns.com (host name)
Port No.: 8023

1. Opens the GL100_240_840-APS software, and then connects the GL840/GL240.
2. Enters the host name of the router that is connected to the GL840/GL240. (Note: The host name is assigned by the DDNS service provider.)
The port number to access the GL840/GL240 needs to be added after the host name. (Note: The port number is set on the router.)

1. Host name must be assigned by DDNS server provider
2. Wi-Fi Router must support DDNS service

What DDNS (Dynamic Domain Name System) do?
When the IP address changes, the router contacts the DDNS service to update your account with the new IP address.