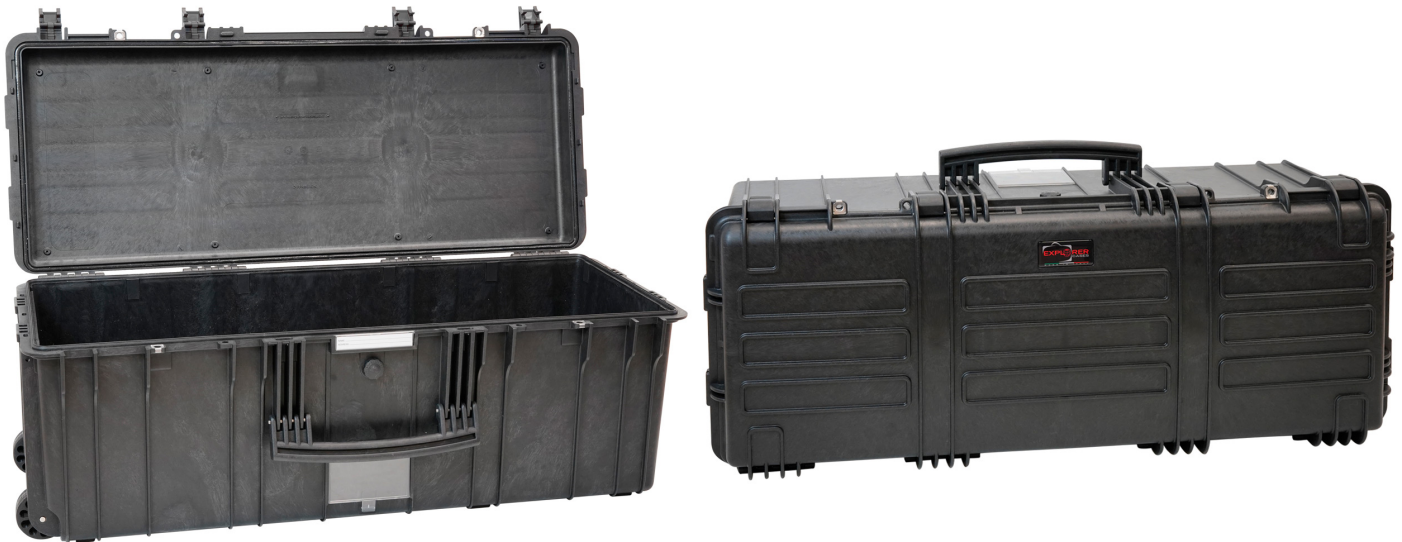


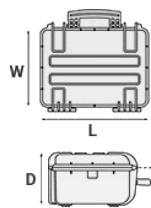
Mod. 9433.B E

COPOLYMER POLYPROPYLENE WATERPROOF CASE

Double depth waterproof cases to accommodate lighting instrumentation.

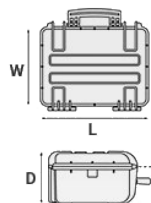


METRIC MM-KG-C°



INTERNAL DIMENSIONS		EXTERNAL DIMENSIONS		OTHER DATA	
L LENGTH	936 mm	L LENGTH	1009 mm	WEIGHT EMPTY	10.2 Kg
W WIDTH	350 mm	W WIDTH	412 mm	WEIGHT WITH FOAM	12.7 Kg
D DEPTH	330 mm	D DEPTH	354 mm	WEIGHT WITH CUSTOM FOAM	Kg
LID	42 mm			VOLUME	108 lt
BASE	288 mm			BUOYANCY	84.9 Kg/max
				OPERATING TEMPERATURE	°C min -33 / max 90

IMPERIAL IN-LBS-F°



INTERNAL DIMENSIONS		EXTERNAL DIMENSIONS		OTHER DATA	
L LENGTH	36 7/8 in	L LENGTH	39 3/4 in	WEIGHT EMPTY	22.48 lbs
W WIDTH	13 3/4 in	W WIDTH	16 1/4 in	WEIGHT WITH FOAM	27.99 lbs
D DEPTH	13 in	D DEPTH	13 15/16 in	WEIGHT WITH CUSTOM FOAM	lbs
LID	1 5/8 in			VOLUME	28.53 gal
BASE	11 5/16 in			BUOYANCY	187.17 lbs/max
				OPERATING TEMPERATURE	°F min -27.4 / max 194

FEATURES



PULL RELEASE LATCH

New pull release latch grants additional safety and avoids accidental opening



AUTOMATIC VALVE

Automatic pressure release valve.



INTERNAL SLOTS

Internal slots for optional panel mounting brackets or panel mounting rings



LARGE FRONT HANDLE



SEALING O-RING

(Art. NEOSEAL + nr. art.)



STAINLESS STEEL REINFORCED PADLOCKABLE POINTS

4 stainless steel clip-covers on the two frontal outer padlock points, to grant a better resistance to abrasion.



ABILITY TO STACK

The special design of the bottom and the lid feet, grants a perfect stackability.



METAL CLIPS

Clips metálicos reforzados en los principales puntos para candados.



WHEELS

4 self-oiling free running wheels

ACCESSORIES



FOAM SET FOR CASE 9433

FOAM.9433

Layers of pre cubed foam for the bottom and convoluted foam for the lid. The pre-cubed foam allows the user to tailor the insert to their own individual requirement. The convoluted foam in the lid helps to firmly keep the stored equipment when the case is closed. Available for 9433 model. Color: dark grey. [DOWNLOAD PDF](#)



PADDED GUN BAG FOR CASE 9413

GSLEEVE 94

Designed to secure your valuable rifle and accessories, the new G Sleeve bags provide protection in a highly mobile condition. A lightweight ruggedized 600D polyester outer fabric protects from humidity, while a padded interior keeps your rifle well protected. The internal rifle retention straps and the neoprene side flaps keep your firearm properly fixed.



PROTECTIVE SLEEVE FOR PC 15"-15.6"

TOP ENVELOPE 15

Protective padded notebook sleeve. Protects the laptop from shocks and scratches.



PROTECTIVE SLEEVE FOR PC 13"-13.3"

TOP ENVELOPE 13

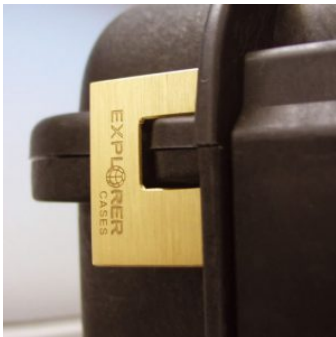
Protective padded notebook sleeve. Protects the laptop from shocks and scratches.



PADDED GUN BAG FOR CASES 9413-9433

GBAG 94

Padded gunbag to protect long guns. Inclusive of a number of features to secure rifles and shotguns together with necessary accessories and ammunitions. GBAG 94 is designed to perfectly fit into Explorer Cases models 9413-9433 (up 3 pcs). The gunbag is built with durable, 600D tear resistant polyester and robust zipper with lockable Velcro pull zipper for the main compartment. The main compartment features two neoprene hook-and-loop side flaps and adjustable straps to secure firearms. The front central compartment is equipped with adjustable interior straps to secure rifle position. The two side smaller pouches are designed to storage accessories and ammunitions. Both the main and front compartments are padded on all sides to protect and transport critical gear. This long gun bag features top and bottom compression straps and come with a removable shoulder strap. Personal ID window on the backside and front removable hook-and-loop screen-printable band. The gunbag can easily become a backpack by fixing the BACKPACK KIT in its rear side (see BACKPACK KIT accessory in BACKPACK SYSTEMS section for more details).



PATENTED HEAVY DUTY BRASS PADLOCK WITH KEYS

EXPL PADLOCK

Designed to fit snug to the Explorer case mould so as not to swing out



DIGITAL LOCK FOR CASES 9413, 9433, 11413, 13513, 13527, 15416, 10826 AND 10840

KIT.DL

Kit includes 2 pcs.



PATENTED COMBINATION PADLOCK

EXPL COMBILOCK

Designed to fit snug to the Explorer case mould so as not to swing out



BLIND INSERT

KIT.EXPL.PLUGS

Kit includes 6 pcs. Whenever the slots are not going to be used for in-built applications, those can be closed by blind inserts that will give the case a better and finished interior look.



TSA APPROVED PADLOCK WITH COMBINATION

EXPL TSA.DIGILOCK

The new TSA approved padlocks allow tsa® airport security agents to open the case without destroying the lock. TSA agents are trained to recognize the travel sentry certified logo and should not break the case lock.



METAL BRACKET

KIT SUPP.EXPL.

Kit includes 6 pcs. All models (except for the 1908) are internally equipped with specific slots, to apply the optional metal or plastic brackets which provide either a panel's fixing points or a fix mechanical joint inside the case, to build more complete applications. This way the case becomes a real workstation, rather than just a carrying container. As the panel mounting brackets are mechanically fixed by screws, they can be removed when necessary. The dedicated screws allow the case to remain waterproof, and help the panels to be removed easily and quickly



PLASTIC BRACKET

KIT SUPP.PLAST.

Kit includes 6 pcs. All models (except for the 1908) are internally equipped with specific slots, to apply the optional metal or plastic brackets which provide either a panel's fixing points or a fix mechanical joint inside the case, to build more complete applications. This way the case becomes a real workstation, rather than just a carrying container. As the panel mounting brackets are mechanically fixed by screws, they can be removed when necessary. The dedicated screws allow the case to remain waterproof, and help the panels to be removed easily and quickly

CONVOLUTED FOAM SET FOR CASE 9413-9433

LIDFOAM.94

(includes 2 pcs.)



SPARE PARTS



Metal clips for mod.

**3005-4209-16-4412-19-4820-5140-5218-21-5325-26-5822-23-33-762
6-30-35-41-7726-45-7814-9413-33-10826-40-11413-13513-27-15416**

KIN.1214

Includes: 4 metal reinforcements



Wheels for models 7626-7635-9433

KIN.1381

Includes: 2 wheels with bearings 2 snap rings (Seeger) 2 fixing pins



Grey trigger pull release latch for models 7814-9413-9433-11413-13513-13527

KIN.1283

Includes: 1 black latch 1 fixing pin



Rubber coated handle for models 7626-7635-9433

KIN.1371

Includes: 1 orange handle 2 fixing pins



Rubber coated handle for models 7626-7635-9433

KIN.1369

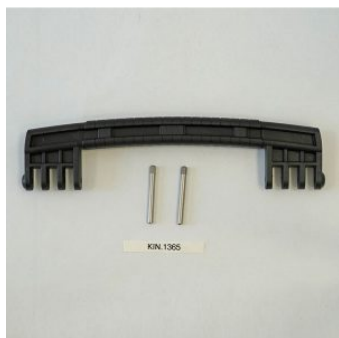
Includes: 1 military green handle 2 fixing pins



Rubber coated handle for models 7626-7635-9433

KIN.1367

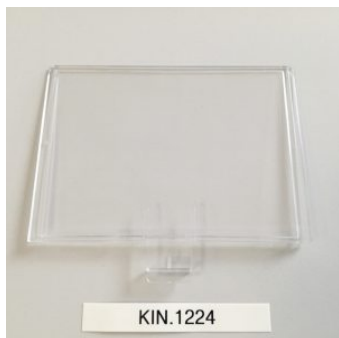
Includes: 1 desert tan handle 2 fixing pins



Rubber coated handle for models 7626-7635-9433

KIN.1365

Includes: 1 black handle 2 fixing pins



**transparent polycarbonate shipping label holders for mod.
5218-5221-7626-7635-7726-7745-9433**

KIN.1224

Includes: 1 transparent label holder



Side handle for models 5140 (new version) and 9433

KIN.1197

Includes: 1 black handle 2 fixing pins



KIN.0969

Transparent PC name tag for mod.

4209-4216-4412-4419-4820-5218-5221-5325-5326-5822-5823-5833-7626-7630-7635-7641-7726-7745-7814-9413-9433-10826-10840-11413-13513-13527-15416-MUB65

KIN.0969

Includes: 1 transparent name tag holder



KIN.0496

Name tag holder for mod. 2712-2717-3317-3317W-3818-5117-5122-MUB78

KIN.0496

Includes: 1 transparent name tag holder



Polyurethane o-ring seal for models 9413-9433

KIN.0865

Includes: 1 o-ring

