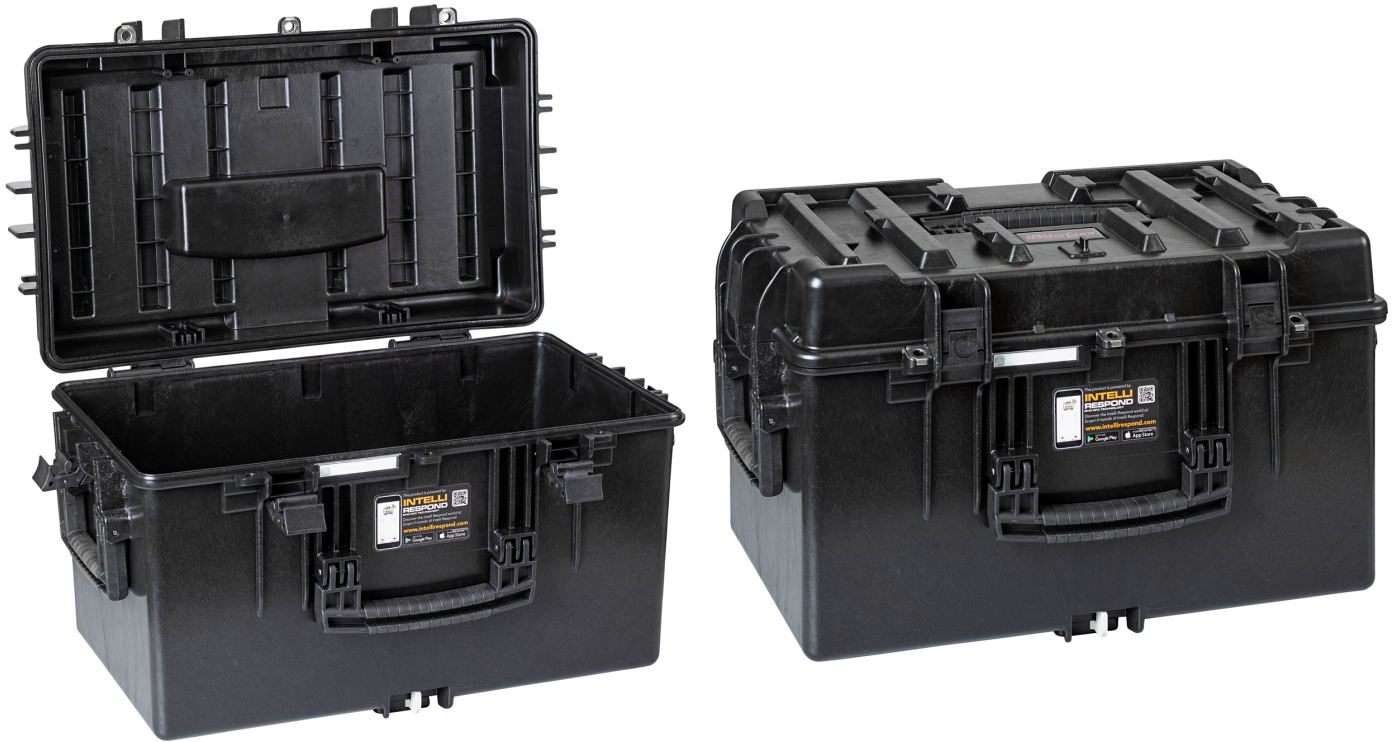


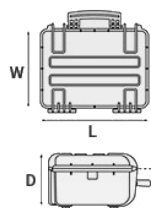
Mod. 5131.B E

5131 – EXPLORER CASES, COPOLYMER POLYPROPYLENE WATERPROOF CASE

The new 5116 and 5131 models can be stacked with each other and/or on top of the Explorer 5140, the popular tool chest with drawers, creating a mobile workstation with even greater loading capacity for tools, spare parts and large components, also sharing with the latter its trolley system with wheels and telescopic handle. Folding handle in the top lid for easier carrying.



METRIC MM-KG-C°



INTERNAL DIMENSIONS

L LENGTH	516 mm
W WIDTH	296 mm
D DEPTH	310 mm
LID	60 mm
BASE	250 mm

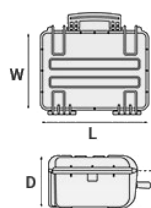
EXTERNAL DIMENSIONS

L LENGTH	585 mm
W WIDTH	386 mm
D DEPTH	348 mm

OTHER DATA

WEIGHT EMPTY	4.8 Kg
WEIGHT WITH FOAM	6 Kg
WEIGHT WITH CUSTOM FOAM	Kg
VOLUME	47.3 lt
BUOYANCY	34.4 Kg/max
OPERATING TEMPERATURE	°C min -33 / max 90

IMPERIAL IN-LBS-F°



INTERNAL DIMENSIONS

L LENGTH	20 5/16 in
W WIDTH	11 5/8 in
D DEPTH	12 3/16 in
LID	2 3/8 in
BASE	9 13/16 in

EXTERNAL DIMENSIONS

L LENGTH	23 1/16 in
W WIDTH	14 1/2 in
D DEPTH	13 11/16 in

OTHER DATA

WEIGHT EMPTY	10.58 lbs
WEIGHT WITH FOAM	13.22 lbs
WEIGHT WITH CUSTOM FOAM	lbs
VOLUME	12.49 gal
BUOYANCY	75.83 lbs/max
OPERATING TEMPERATURE	°F min -27.4 / max

FEATURES



PULL RELEASE LATCH

New pull release latch grants additional safety and avoids accidental opening



CORROSION PROOF METAL HINGES WITH LID STAY FEATURES



INTERNAL SLOTS

Internal slots for optional panel mounting brackets or panel mounting rings



SEALING O-RING

(Art. NEOSEAL + nr. art.)



PVC WATERPROOF I. D. REMOVABLE LABEL

(Art. LABELCOVER + nr. art.)



LID CAN BE SET TO SLIDE-OFF

By releasing the back screw, lid becomes set to slide-off when opened at 70°



SOFT GRIP RUBBER HANDLE

Load tested handle, reinforced with corrosion proof steel pins



STAINLESS STEEL REINFORCED PADLOCKABLE POINTS

4 stainless steel clip-covers on the two frontal outer padlock points, to grant a better resistance to abrasion.



ABILITY TO STACK

The special design of the bottom and the lid feet, grants a perfect stackability.



AUTOMATIC PURGE VALVE

Automatic pressure release valve.

ACCESSORIES



PATENTED HEAVY DUTY BRASS PADLOCK WITH KEYS

EXPL PADLOCK

Designed to fit snug to the Explorer case mould so as not to swing out



PATENTED COMBINATION PADLOCK

EXPL COMBILOCK

Designed to fit snug to the Explorer case mould so as not to swing out



BLIND INSERT

KIT.EXPL.PLUGS

Kit includes 6 pcs. Whenever the slots are not going to be used for in-built applications, those can be closed by blind inserts that will give the case a better and finished interior look.



TSA APPROVED PADLOCK WITH COMBINATION

EXPL TSA.DIGILOCK

The new TSA approved padlocks allow tsa® airport security agents to open the case without destroying the lock. TSA agents are trained to recognize the travel sentry certified logo and should not break the case lock.



METAL BRACKET

KIT SUPP.EXPL.

Kit includes 6 pcs. All models (except for the 1908) are internally equipped with specific slots, to apply the optional metal or plastic brackets which provide either a panel's fixing points or a fix mechanical joint inside the case, to build more complete applications. This way the case becomes a real workstation, rather than just a carrying container. As the panel mounting brackets are mechanically fixed by screws, they can be removed when necessary. The dedicated screws allow the case to remain waterproof, and help the panels to be removed easily and quickly



PLASTIC BRACKET

KIT SUPP.PLAST.

Kit includes 6 pcs. All models (except for the 1908) are internally equipped with specific slots, to apply the optional metal or plastic brackets which provide either a panel's fixing points or a fix mechanical joint inside the case, to build more complete applications. This way the case becomes a real workstation, rather than just a carrying container. As the panel mounting brackets are mechanically fixed by screws, they can be removed when necessary. The dedicated screws allow the case to remain waterproof, and help the panels to be removed easily and quickly