

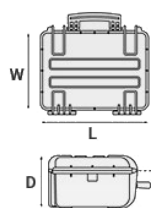
## Mod. 4209HL.BCV

4209HL – EXPLORER CASES, ULTRALIGHT WATERPROOF CASE

Industrial waterproof case



METRIC MM-KG-C°



### INTERNAL DIMENSIONS

<b>L LENGTH</b>	420 mm
<b>W WIDTH</b>	300 mm
<b>D DEPTH</b>	95 mm
<b>LID</b>	35 mm
<b>BASE</b>	60 mm

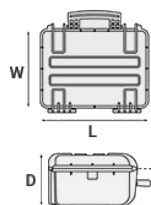
### EXTERNAL DIMENSIONS

<b>L LENGTH</b>	457 mm
<b>W WIDTH</b>	366 mm
<b>D DEPTH</b>	118 mm

### OTHER DATA

<b>WEIGHT EMPTY</b>	2.2 Kg
<b>WEIGHT WITH FOAM</b>	2.6 Kg
<b>WEIGHT WITH CUSTOM FOAM</b>	2.8 Kg
<b>VOLUME</b>	12 lt
<b>BUOYANCY</b>	6.8 Kg/max
<b>OPERATING TEMPERATURE</b>	°C min -33 / max 90

IMPERIAL IN-LBS-F°



### INTERNAL DIMENSIONS

<b>L LENGTH</b>	16 9/16 in
<b>W WIDTH</b>	11 13/16 in
<b>D DEPTH</b>	3 3/4 in
<b>LID</b>	1 3/8 in
<b>BASE</b>	2 3/8 in

### EXTERNAL DIMENSIONS

<b>L LENGTH</b>	18 in
<b>W WIDTH</b>	14 7/16 in
<b>D DEPTH</b>	4 5/8 in

### OTHER DATA

<b>WEIGHT EMPTY</b>	4.85 lbs
<b>WEIGHT WITH FOAM</b>	5.73 lbs
<b>WEIGHT WITH CUSTOM FOAM</b>	6.17 lbs
<b>VOLUME</b>	3.17 gal
<b>BUOYANCY</b>	14.99 lbs/max
<b>OPERATING TEMPERATURE</b>	°F min -27.4 / max 194

## FEATURES



### **AUTOMATIC VALVE**

Automatic pressure release valve.



### **INTERNAL SLOTS**

Internal slots for optional panel mounting brackets or panel mounting rings



### **JAM FREE LATCHES WITH EASY-OPENING MECHANISM**

(from model 3818 on)



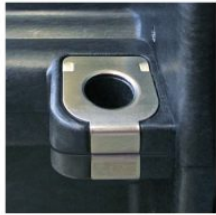
### **PVC WATERPROOF I. D. REMOVABLE LABEL**

(Art. LABELCOVER + nr. art.)



### **LID CAN BE SET TO SLIDE-OFF**

By releasing the back screw, lid becomes set to slide-off when opened at 70°



### **STAINLESS STEEL REINFORCED PADLOCKABLE POINTS**

4 stainless steel clip-covers on the two frontal outer padlock points, to grant a better resistance to abrasion.



### **ABILITY TO STACK**

The special design of the bottom and the lid feet, grants a perfect stackability.

## ACCESSORIES



### LID PANEL WITH ORGANIZED POUCHES

PANEXPL42

Practical and robust lid panel with pouches, ideal for small accessories and documents. Suitable for cases 4209 and 4216. Color: black.



### CONVOLUTED FOAM SET FOR CASE 4209 AND 4216

LIDFOAM.42

(includes 2 pcs.)



### FOAM SET FOR CASE 4209

FOAM.4209

Layers of pre cubed foam for the bottom and convoluted foam for the lid. The pre-cubed foam allows the user to tailor the insert to their own individual requirement. The convoluted foam in the lid helps to firmly keep the stored equipment when the case is closed. Available for 4209 model. Color: dark grey. [DOWNLOAD PDF](#)



**GBAG 42**



### PADDED GUN BAG FOR CASE 4209

GBAG 42

Padded gunbag to protect the pistol in the velcroed pouch. It stores 5 magazines and a clean rod in the elasticated loops. GBAG 42 is designed to perfectly fit into Explorer Cases models 4209 (1 piece). The gunbag is built with durable, 600D tear resistant polyester and robust zipper with lockable Velcro pull zipper.



### LAPTOP PADDED BAG

BAG-PC42

Highly durable padded bag with rubber coated handle and waterproof zipper with lockable Velcro pull zipper. Practical external front pouch for documents, removable shoulder strap and rubber feet on the bottom to grant better grip. Provided with internal cable pouch. Ideal for laptop up to 15". Suitable for case 4209. Color: black/red.



### PROTECTIVE SLEEVE FOR PC 15"-15.6"

TOP ENVELOPE 15

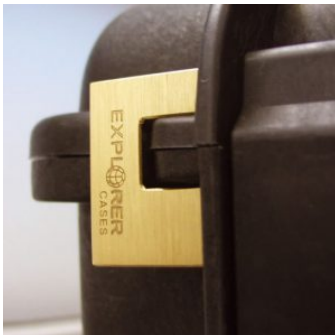
Protective padded notebook sleeve. Protects the laptop from shocks and scratches.



### PROTECTIVE SLEEVE FOR PC 13"-13.3"

TOP ENVELOPE 13

Protective padded notebook sleeve. Protects the laptop from shocks and scratches.



### PATENTED HEAVY DUTY BRASS PADLOCK WITH KEYS

EXPL PADLOCK

Designed to fit snug to the Explorer case mould so as not to swing out



### PATENTED COMBINATION PADLOCK

EXPL COMBILOCK

Designed to fit snug to the Explorer case mould so as not to swing out



### BLIND INSERT

KIT.EXPL.PLUGS

Kit includes 6 pcs. Whenever the slots are not going to be used for in-built applications, those can be closed by blind inserts that will give the case a better and finished interior look.



### TSA APPROVED PADLOCK WITH COMBINATION

EXPL TSA.DIGILOCK

The new TSA approved padlocks allow tsa® airport security agents to open the case without destroying the lock. TSA agents are trained to recognize the travel sentry certified logo and should not break the case lock.



### METAL BRACKET

KIT SUPP.EXPL.

Kit includes 6 pcs. All models (except for the 1908) are internally equipped with specific slots, to apply the optional metal or plastic brackets which provide either a panel's fixing points or a fix mechanical joint inside the case, to build more complete applications. This way the case becomes a real workstation, rather than just a carrying container. As the panel mounting brackets are mechanically fixed by screws, they can be removed when necessary. The dedicated screws allow the case to remain waterproof, and help the panels to be removed easily and quickly





### PLASTIC BRACKET

KIT SUPP.PLAST.

Kit includes 6 pcs. All models (except for the 1908) are internally equipped with specific slots, to apply the optional metal or plastic brackets which provide either a panel's fixing points or a fix mechanical joint inside the case, to build more complete applications. This way the case becomes a real workstation, rather than just a carrying container. As the panel mounting brackets are mechanically fixed by screws, they can be removed when necessary. The dedicated screws allow the case to remain waterproof, and help the panels to be removed easily and quickly



### HANDY BACKPACK CARRYING SYSTEM FOR CASES

BACKPACK M

Made of robust tear resistant polyester. Designed with adjustable and comfortable padded shoulder straps and belt. Provided with an external pocket for small accessories, with Velcro strap. Ideal wherever a free hand movement is required, like in outdoor activities, extreme sports, emergency, rescue, trekking, industrial field, etc. Suitable for models 3317, 3818 and 5117. Color: black.

## SPARE PARTS



### **Metal clips for mod.**

**3005-4209-16-4412-19-4820-5140-5218-21-5325-26-5822-23-33-762-6-30-35-41-7726-45-7814-9413-33-10826-40-11413-13513-27-15416**

KIN.1214

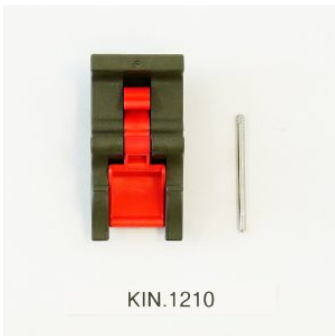
Includes: 4 metal reinforcements



### **Red trigger pull release latch for models 4209-4216-5218-5221**

KIN.1211

Includes: 1 desert tan latch 1 fixing pin



### **Red trigger pull release latch for models 4209-4216-5218-5221**

KIN.1210

Includes: 1 military green latch 1 fixing pin



### **Rubber coated handle for model 4209**

KIN.1258

Includes: 1 desert tan handle 2 fixing pins





### Rubber coated handle for model 4209

KIN.1257

Includes: 1 military green handle 2 fixing pins



### Rubber coated handle for model 4209

KIN.1256

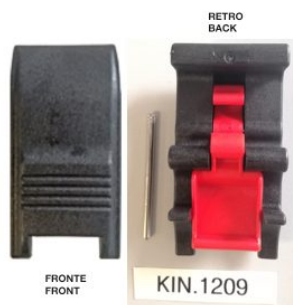
Includes: 1 orange handle 2 fixing pins



### Rubber coated handle for model 4209

KIN.1259

Includes: 1 black handle 2 fixing pins



### Red trigger pull release latch for models 4209-4216-5218-5221

KIN.1209

Includes: 1 black latch 1 fixing pin



**Polyurethane o-ring seal for models 4209 and 4216**

KIN.1297

Includes: 1 o-ring



KIN.0969

**Transparent PC name tag for mod.**

**4209-4216-4412-4419-4820-5218-5221-5325-5326-5822-5823-5833-  
7626-7630-7635-7641-7726-7745-7814-9413-9433-10826-10840-114  
13-13513-13527-15416-MUB65**

KIN.0969

Includes: 1 transparent name tag holder



**Easy-opening latch for models from 3818 up**

KIN.0446

Includes:

1 black latch

1 fixing pin



**Easy-opening latch for models from 3818 up**

KIN.0435

Includes:

1 military green latch

1 fixing pin



### Easy-opening latch for models from 3818 up

KIN.0434

Includes:

1 orange latch

1 fixing pin



### Easy-opening latch for models from 3818 up

KIN.0883

Includes:

1 sand latch

1 fixing pin