

Mod. 3815HL.B E

3815HL – EXPLORER CASES, ULTRALIGHT WATERPROOF CASE

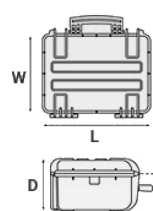
Medium size watertight case injected with proprietary copolymer PP that makes it more resistant and lightweight than other similar products. IP67 and MIL Stan certified* to be resistant to impact, liquids, shocks. Ideal container for documents, laptops, books, medical equipment and electronic devices, tools and more.

- Metal reinforced padlock holes
- Single block high performance injected O-ring
- Automatic pressure valve
- Soft rubber handle grip
- Removable lid
- Anti-tilt support
- Certified to grant constant performances between -33°C and +90 °C.
- Six standard colors available

*Pending certification release



METRIC MM-KG-C°



INTERNAL DIMENSIONS

L LENGTH	380 mm
W WIDTH	270 mm
D DEPTH	155 mm
LID	47 mm
BASE	108 mm

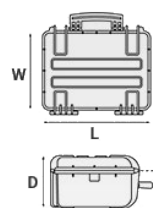
EXTERNAL DIMENSIONS

L LENGTH	420 mm
W WIDTH	340 mm
D DEPTH	177 mm

OTHER DATA

WEIGHT EMPTY	2.20 Kg
WEIGHT WITH FOAM	2.53 Kg
WEIGHT WITH CUSTOM FOAM	Kg
VOLUME	15.90 lt
BUOYANCY	10 Kg/max
OPERATING TEMPERATURE	°C min -33 / max +90

IMPERIAL IN-LBS-F°



INTERNAL DIMENSIONS

L LENGTH	14 15/16 in
W WIDTH	10 5/8 in
D DEPTH	6 1/8 in
LID	1 7/8 in
BASE	4 1/4 in

EXTERNAL DIMENSIONS

L LENGTH	16 9/16 in
W WIDTH	13 3/8 in
D DEPTH	6 15/16 in

OTHER DATA

WEIGHT EMPTY	4.85 lbs
WEIGHT WITH FOAM	5.57 lbs
WEIGHT WITH CUSTOM FOAM	lbs
VOLUME	4.20 gal
BUOYANCY	22.04 lbs/max
OPERATING TEMPERATURE	°F min -27.4 / max +194

FEATURES



AUTOMATIC VALVE

Automatic pressure release valve.



CORROSION PROOF METAL HINGES WITH LID STAY FEATURES



FIXING POINTS

Additional fixing points on the lid, available on certain models



INTERNAL SLOTS

Internal slots for optional panel mounting brackets or panel mounting rings



JAM FREE LATCHES WITH EASY-OPENING MECHANISM

(from model 3818 on)



PVC WATERPROOF I. D. REMOVABLE LABEL

(Art. LABELCOVER + nr. art.)



SOFT GRIP RUBBER HANDLE

Load tested handle, reinforced with corrosion proof steel pins



COUNTERBALANCE SUPPORTS

(in certain models)

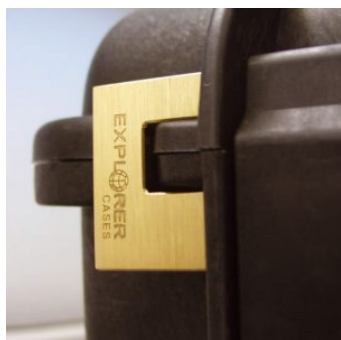
ACCESSORIES



PROTECTIVE SLEEVE FOR PC 13"-13.3"

TOP ENVELOPE 13

Protective padded notebook sleeve. Protects the laptop from shocks and scratches.



PATENTED HEAVY DUTY BRASS PADLOCK WITH KEYS

EXPL PADLOCK

Designed to fit snug to the Explorer case mould so as not to swing out



PATENTED COMBINATION PADLOCK

EXPL COMBILOCK

Designed to fit snug to the Explorer case mould so as not to swing out



BLIND INSERT

KIT.EXPL.PLUGS

Kit includes 6 pcs. Whenever the slots are not going to be used for in-built applications, those can be closed by blind inserts that will give the case a better and finished interior look.



TSA APPROVED PADLOCK WITH COMBINATION

EXPL TSA.DIGILOCK

The new TSA approved padlocks allow tsa® airport security agents to open the case without destroying the lock. TSA agents are trained to recognize the travel sentry certified logo and should not break the case lock.



METAL BRACKET

KIT SUPP.EXPL.

Kit includes 6 pcs. All models (except for the 1908) are internally equipped with specific slots, to apply the optional metal or plastic brackets which provide either a panel's fixing points or a fix mechanical joint inside the case, to build more complete applications. This way the case becomes a real workstation, rather than just a carrying container. As the panel mounting brackets are mechanically fixed by screws, they can be removed when necessary. The dedicated screws allow the case to remain waterproof, and help the panels to be removed easily and quickly



PLASTIC BRACKET

KIT SUPP.PLAST.

Kit includes 6 pcs. All models (except for the 1908) are internally equipped with specific slots, to apply the optional metal or plastic brackets which provide either a panel's fixing points or a fix mechanical joint inside the case, to build more complete applications. This way the case becomes a real workstation, rather than just a carrying container. As the panel mounting brackets are mechanically fixed by screws, they can be removed when necessary. The dedicated screws allow the case to remain waterproof, and help the panels to be removed easily and quickly



HANDY BACKPACK CARRYING SYSTEM FOR CASES

BACKPACK M

Made of robust tear resistant polyester. Designed with adjustable and comfortable padded shoulder straps and belt. Provided with an external pocket for small accessories, with Velcro strap. Ideal wherever a free hand movement is required, like in outdoor activities, extreme sports, emergency, rescue, trekking, industrial field, etc. Suitable for models 3317, 3818 and 5117. Color: black.

SPARE PARTS



Rubber coated handle for mod. 3818-4412-4419-5117-5122

KIN.0479

Includes: 1 black handle 2 fixing pins



Rubber coated handle for models 3818-4412-4419-5117-5122

KIN.0469

Includes: 1 military green handle 2 fixing pins



Name tag holder for mod. 2712-2717-3317-3317W-3818-5117-5122-MUB78

KIN.0496

Includes: 1 transparent name tag holder



Easy-opening latch for models from 3818 up

KIN.0446

Includes:
1 black latch
1 fixing pin



Easy-opening latch for models from 3818 up

KIN.0435

Includes:

1 military green latch

1 fixing pin



Easy-opening latch for models from 3818 up

KIN.0434

Includes:

1 orange latch

1 fixing pin



Rubber coated handle for models 3818-4412-4419-5117-5122

KIN.0468

Includes: 1 orange handle 2 fixing pins



Polyurethane o-ring seal for model 3818

KIN.0849

Includes:

1 o-ring



Easy-opening latch for models from 3818 up

KIN.0883

Includes:

1 sand latch

1 fixing pin