

THIS IS ISSUED IN STRICT CONFIDENCE THAT IT IS NOT USED AS A BASIS FOR MANUFACTURE OR SALE AND THAT IT IS NOT COPIED, REPRINTED OR DISCLOSED TO A THIRD PARTY EITHER WHOLLY OR IN PART WITHOUT THE PRIOR WRITTEN CONSENT OF CAL TEST ELECTRONICS, INC.

REVISIONS			
REV.	DESCRIPTIONS	DATE	APPROVED
—	CLASS A RELEASED	7/11/99	
A	REVISED TO METRIC FORMAT; ADDED NOTES 6 & 7; DIM. 14 (.55)	2/27/18	

- 4mm INSULATED JACK, THRU-HOLE.
- SPECIFICATIONS:
INSULATORS: POLYAMIDE (NYLON)
JACK BODY: BRASS, NICKEL PLATED
NUT: BRASS, NICKEL PLATED
- RATING:
VOLTAGE:
IEC 61010-1: 30 VDC/60 VAC
NON-HANDHELD: 1,200V AC/DC
CURRENT: 36A MAX.
TEMPERATURE: -20° C TO +80° C.

4. MOUNTING HOLE: REFERENCE DIAGRAM.

5. MAXIMUM PANEL THICKNESS: 5 mm (.20)

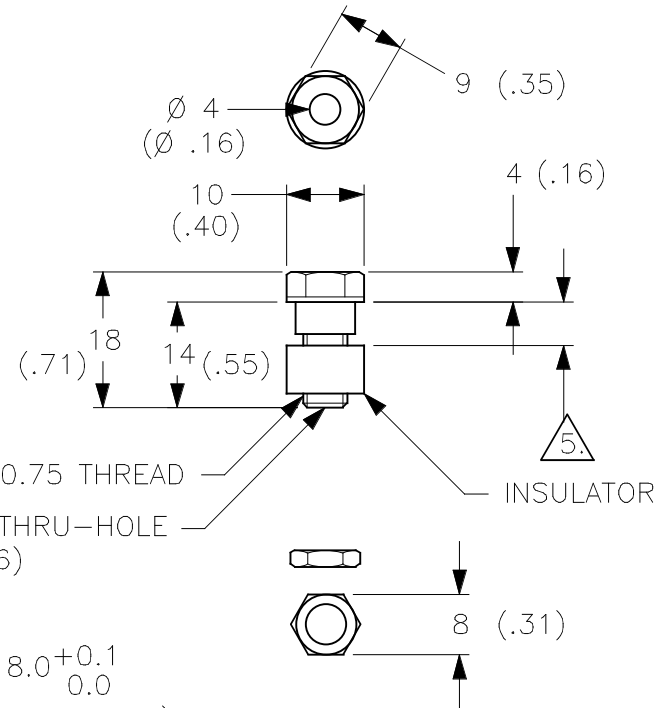
6. SUPPLIED WITH 1 M6x0.75 HEX NUT

7. RoHS 2 COMPLIANT
EXCEPTION: ANNEX III, 6(c)

PART NUMBER

CT2230-#

COLOR: 0 - BLACK
2 - RED
4 - YELLOW
5 - GREEN
6 - BLUE
9 - WHITE



4. MOUNTING HOLE

METRIC

UNLESS OTHERWISE SPECIFIED
DIMENSIONS ARE IN MILLIMETERS
TOLERANCES ARE:
DECIMALS ANGLE
.X ± 0.8 ± 2°
.XX ± 0.25
DO NOT SCALE DRAWING

CONTRACT NO.

Cal Test Electronics

22820 Savi Ranch Parkway
Yorba Linda, CA 92887-4610

APPROVALS	DATE
DRAWN WDH	7/11/99

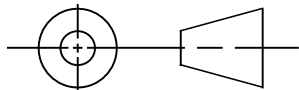
TITLE
4 mm INSULATED JACK, THRU-HOLE

THIRD ANGLE PROJECTION

MATERIAL

CHECKED

SIZE	CAGE CODE	DWG. NO.	REV.
A	43F45	P223000	A



FINISH

ENGR.

DESIGN ACTIVITY

SCALE 1:1	SHEET 1 OF 1
-----------	--------------