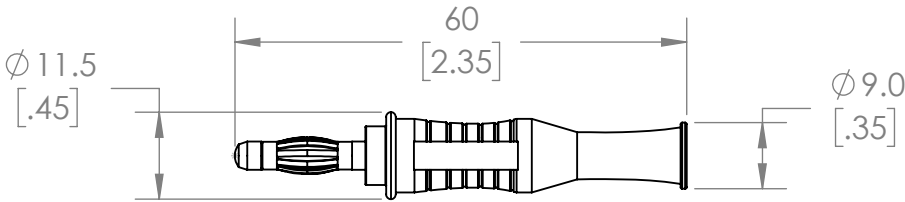
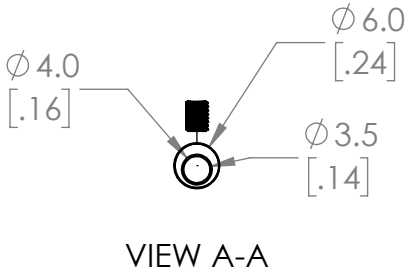
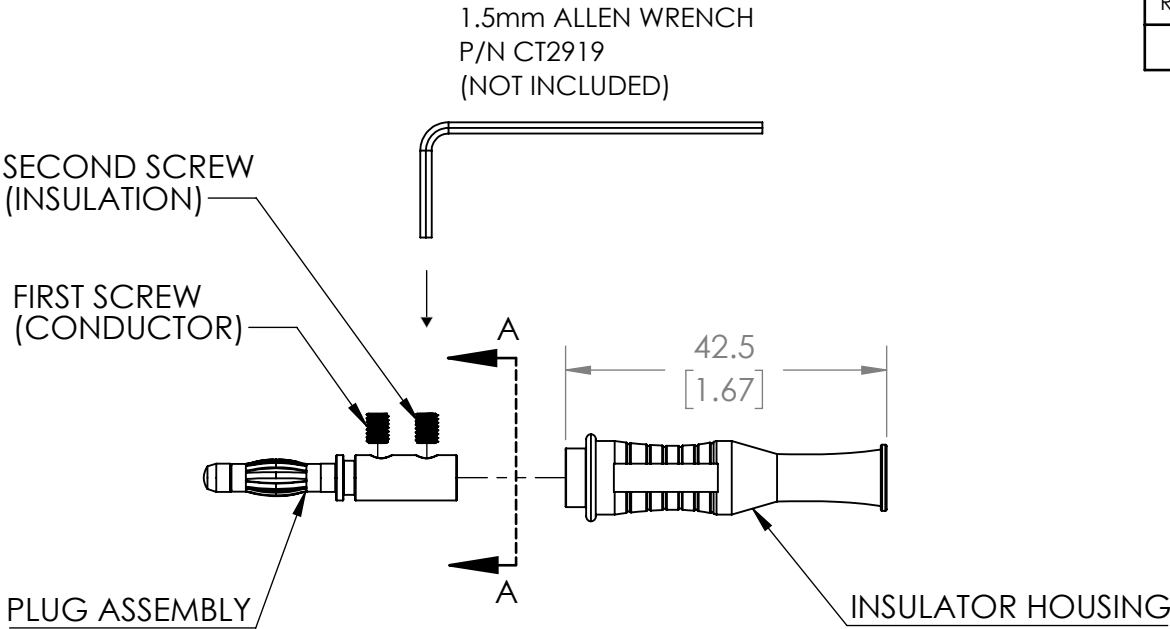


THIS IS ISSUED IN STRICT CONFIDENCE THAT IT IS NOT USED AS A BASIS FOR MANUFACTURE OR SALE AND THAT IT IS NOT COPIED, REPRINTED OR DISCLOSED TO A THIRD PARTY EITHER WHOLLY OR IN PART WITHOUT THE PRIOR WRITTEN CONSENT OF CAL TEST ELECTRONICS, INC.

NOTES:

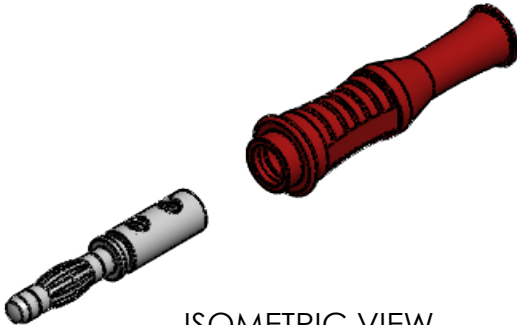
1. MATERIAL:  
BODY: SANTOPRENE  
PLUG: BRASS, NICKEL PLATED  
CONTACT: BeCu, NICKEL PLATED
2. RATING:  
IEC RATING: 33 VAC / 70 VDC  
VOLTAGE MAX: 1200 VAC / VDC  
CURRENT MAX: 36 A  
TEMPERATURE: -20 °C TO +80 °C
3. MAXIMUM WIRE SIZE:  
CONDUCTOR: Ø .175mm [.06] (14 AWG)  
INSULATION: Ø 4.0mm [.16]  
STRIP LENGTH: 6.4mm [.25]
4. RoHS 2 COMPLIANT.



ASSEMBLED

ASSEMBLY INSTRUCTIONS:


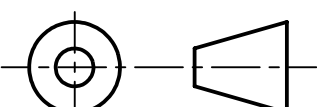
1. SLIDE WIRE THROUGH INSULATOR HOUSING.
2. STRIP WIRE 6.4mm [.25"].
3. INSERT STRIPPED WIRE INTO PLUG ASSEMBLY.
4. TIGHTEN FIRST SET-SCREW (CONDUCTOR).
5. FOR SET-SCREWS, USE 1.5mm ALLEN WRENCH (CAL TEST P/N CT2919).
6. SNUG SECOND SET-SCREW ON WIRE INSULATION.
7. PUSH PLUG ASSEMBLY INTO INSULATOR HOUSING.



ISOMETRIC VIEW  
PRE-ASSEMBLY

CT3276-9	WHITE	-
CT3276-6	BLUE	-
CT3276-5	GREEN	-
CT3276-4	YELLOW	-
CT3276-2	RED	-
CT3276-0	BLACK	-
PART NUMBER	CONFIGURATION	NOTES / REFERENCE

PART NUMBER TABLE

THIRD ANGLE PROJECTION	<p>UNLESS OTHERWISE SPECIFIED DIMENSIONS ARE IN MILLIMETERS TOLERANCES ARE:</p> <p>X.X = ±0.5    X.X* = ±0.5* X.XX = ±0.25 X.XXX = ±0.125</p> <p>DO NOT SCALE DRAWING</p>	PROJECT NO.		METRIC				22820 Savi Ranch Prky. Yorba Linda, CA 92887 USA		
		APPROVALS		DATE	TITLE  4mm BANANA PLUG, SOLDERLESS					
		DRAWN G. GORGONIO		11/24/2021						
		CHECKER B. HANSEN		11/24/2021						
	MATERIAL  SEE NOTES	ENGR. B. HANSEN	11/24/2021	SIZE B	CAGE CODE 43F45	DWG. NO. CT3276		REV. A		
	TREATMENT  N/A	DESIGN ACTIVITY		SCALE 1:1		SHEET 1 OF 1				
	FINISH  SEE NOTES									