

Honeywell BW™ Solo

Serviceable Single-Gas Detector

The Honeywell BW™ Solo is easy to operate and service and includes an extensive selection of sensor options. It can help reduce the cost of ownership for serviceable single-gas detectors and includes a wireless option for enabling connected workers. The profile is small and lightweight, and the design is ruggedized for years of reliable service. No need to take apart the Honeywell BW™ Solo for common maintenance tasks; simply pop off the front door to replace a sensor or filter, or remove a single screw for battery replacement.

Optional wireless connectivity enables additional capabilities such as dock-less transfer of data and event logs, and real-time monitoring of worker safety.

GENERAL SPECIFICATIONS	
SIZE	2.7 x 2.6 x 1.4 in. / 7.0 x 6.7 x 3.6 cm (1-Series sensor models) 2.7 x 2.6 x 1.6 in. / 7.0 x 6.7 x 4.1 cm (4-Series sensor models)
WEIGHT	3.6 to 4.1 oz. / 103 to 116 g, depending on installed sensor
OPERATING TEMPERATURE	-40 to +140° F / -40 to +60° C intrinsic safety
INGRESS PROTECTION	IP66/68
WARRANTY	3 years for 1-Series detectors and sensors (H ₂ S, CO, O ₂) 2 years for 4-Series detectors and sensors (1 year for NH ₃ , Cl ₂ , O ₃ , ETO, ClO ₂ sensors)



Honeywell BW™ Solo Serviceable Single-Gas Detector

ORDERING INFORMATION		
Honeywell BW™ Solo Single-Gas Detector, Non-wireless Version	Black Housing	Yellow Housing
Honeywell BW™ Solo, non-wireless – chlorine (Cl ₂)	BWS-C-B	BWS-C-Y
Honeywell BW™ Solo, non-wireless – chlorine dioxide (ClO ₂)	BWS-V-B	BWS-V-Y
Honeywell BW™ Solo, non-wireless – carbon monoxide (CO)	BWS-ML-B	BWS-ML-Y
Honeywell BW™ Solo, non-wireless – carbon monoxide, hydrogen (h ₂) resistant (CO-H)	BWS-M2-B	BWS-M2-Y
Honeywell BW™ Solo, non-wireless – ethylene oxide (ETO)	BWS-E-B	BWS-E-Y
Honeywell BW™ Solo, non-wireless – hydrogen (H ₂)	BWS-R-B	BWS-R-Y
Honeywell BW™ Solo, non-wireless – hydrogen sulfide (H ₂ S)	BWS-HL-B	BWS-HL-Y
Honeywell BW™ Solo, non-wireless – hydrogen sulfide, extended range (H ₂ S)	BWS-H2-B	BWS-H2-Y
Honeywell BW™ Solo, non-wireless – hydrogen cyanide (HCN)	BWS-Z-B	BWS-Z-Y
Honeywell BW™ Solo, non-wireless – ammonia (NH ₃)	BWS-A-B	BWS-A-Y
Honeywell BW™ Solo, non-wireless – ammonia, extended range (NH ₃)	BWS-A2-B	BWS-A2-Y
Honeywell BW™ Solo, non-wireless – nitric oxide (NO)	BWS-N-B	BWS-N-Y
Honeywell BW™ Solo, non-wireless – nitrogen dioxide (NO ₂)	BWS-D-B	BWS-D-Y
Honeywell BW™ Solo, non-wireless – oxygen (O ₂)	BWS-XL-B	BWS-XL-Y
Honeywell BW™ Solo, non-wireless – ozone (O ₃)	BWS-G-B	BWS-G-Y
Honeywell BW™ Solo, non-wireless – phosphine (PH ₃)	BWS-P-B	BWS-P-Y
Honeywell BW™ Solo, non-wireless – sulfur dioxide (SO ₂)	BWS-S-B	BWS-S-Y
Honeywell BW™ Solo Single-Gas Detector, Wireless Version	Black Housing	Yellow Housing
Honeywell BW™ Solo, wireless – chlorine (Cl ₂)	BWS1-C-B	BWS1-C-Y
Honeywell BW™ Solo, wireless – chlorine dioxide (ClO ₂)	BWS1-V-B	BWS1-V-Y
Honeywell BW™ Solo, wireless – carbon monoxide (CO)	BWS1-ML-B	BWS1-ML-Y
Honeywell BW™ Solo, wireless – carbon monoxide, hydrogen (h ₂) resistant (CO-H)	BWS1-M2-B	BWS1-M2-Y
Honeywell BW™ Solo, wireless – ethylene oxide (ETO)	BWS1-E-B	BWS1-E-Y
Honeywell BW™ Solo, wireless – hydrogen (H ₂)	BWS1-R-B	BWS1-R-Y
Honeywell BW™ Solo, wireless – hydrogen sulfide (H ₂ S)	BWS1-HL-B	BWS1-HL-Y
Honeywell BW™ Solo, wireless – hydrogen sulfide (H ₂ S), extended range	BWS1-H2-B	BWS1-H2-Y
Honeywell BW™ Solo, wireless – hydrogen cyanide (HCN)	BWS1-Z-B	BWS1-Z-Y
Honeywell BW™ Solo, wireless – ammonia (NH ₃)	BWS1-A-B	BWS1-A-Y
Honeywell BW™ Solo, wireless – ammonia (NH ₃), extended range	BWS1-A2-B	BWS1-A2-Y
Honeywell BW™ Solo, wireless – nitric oxide (NO)	BWS1-N-B	BWS1-N-Y
Honeywell BW™ Solo, wireless – nitrogen dioxide (NO ₂)	BWS1-D-B	BWS1-D-Y
Honeywell BW™ Solo, wireless – oxygen (O ₂)	BWS1-XL-B	BWS1-XL-Y
Honeywell BW™ Solo, wireless – ozone (O ₃)	BWS1-G-B	BWS1-G-Y
Honeywell BW™ Solo, wireless – phosphine (PH ₃)	BWS1-P-B	BWS1-P-Y
Honeywell BW™ Solo, wireless – sulfur dioxide (SO ₂)	BWS1-S-B	BWS1-S-Y
Honeywell IntelliDoX® Automated Instrument Management System		Order Number
Honeywell IntelliDoX® docking station for Honeywell BW™ Solo		DX-SOLO
Honeywell IntelliDoX® Nest for Honeywell BW™ Solo		DX-NEST-SOLO
Honeywell IntelliDoX® enabler kit, NA version (North America) <i>Includes power supply with region-specific AC power cord, ethernet cable, inlet (purge) filter assembly, 3 ft. / 1 m calibration gas tubing, 3 ft. / 1 m purge gas tubing, 15 ft. / 4.5 m exhaust tubing and quick connect fittings.</i>		DX-ENBL-NA

Note: One Honeywell IntelliDoX® enabler kit is required for each docking system. Each docking system can support up to 5 Honeywell IntelliDoX® modules.

Honeywell BW™ Solo Serviceable Single-Gas Detector

ORDERING INFORMATION (CONTINUED)	
Testing Equipment	Order Number
Hydrogen sulfide (H ₂ S, 25 ppm), balance N ₂ , 34 L (requires REG-DF-1 or REG-0.5)	CG2-H-25-34
Hydrogen sulfide (H ₂ S, 25 ppm), balance N ₂ , 58 L (requires REG-DF-1 or REG-0.5)	G0042-H25
Carbon monoxide (CO, 100 ppm), balance N ₂ , 34 L (requires REG-DF-3 or REG2-0.5)	CG2-M-100-34
Carbon monoxide (CO, 100 ppm), balance N ₂ , 58 L (requires REG-DF-1 or REG-0.5)	CG2-M-100-58
Sulfur dioxide (SO ₂ , 20 ppm), balance N ₂ , 34 L	CG2-S-20-34
Sulfur dioxide (SO ₂ , 20 ppm), balance N ₂ , 58 L	CG2-S-20-58
Ammonia (NH ₃ , 50 ppm), balance N ₂ , 34 L	CG2-A-50-34
Ammonia (NH ₃ , 50 ppm), balance N ₂ , 58 L	CG2-A-50-58
Phosphine (PH ₃ , 1 ppm), balance N ₂ , 34 L	CG2-P-1-34
Chlorine (Cl ₂ , 10 ppm), balance N ₂ , 34 L	CG2-C-10-34
Nitric oxide (NO, 50 ppm)	CG2-N-50-34
Nitrogen dioxide (NO ₂ , 10 ppm), balance N ₂ , 34 L	CG2-D-10-34
Hydrogen cyanide (HCN, 10ppm), balance N ₂ , 34 L	CG2-Z-10-34
Hydrogen cyanide (HCN, 10ppm), balance N ₂ , 58 L	CG2-Z-10-58
Ethylene oxide (ETO, 10 ppm), balance N ₂ , 58 L	CG2-E-10-58
Demand flow regulator (for use with MicroDock II or IntelliDoX)	REG-DF-1
Calibration gas regulator (0.5 LPM)	REG-0.5
Calibration hose, Tygon (1 ft. / 0.3 m, 1/8 in. I.D., 1/4 in. O.D.)	C2-HOSE1-1
Wall mount (adjustable) for 34, 58, 103 L gas cylinders, red	MK-CG2-58
Replacement test/calibration cap	BWS-TC-1
Replacement Sensors	Order Number
Replacement carbon monoxide (CO) sensor (1-Series)	SR-M1-1S
Replacement hydrogen sulfide (H ₂ S) sensor (1-Series)	SR-H1-1S
Replacement oxygen (O ₂) sensor (1-Series)	SR-X1-1S
Replacement chlorine (Cl ₂) sensor (4-Series)	PS-RC10
Replacement chlorine dioxide (ClO ₂) sensor (4-Series)	SR-V04
Replacement carbon monoxide, hydrogen (h ₂) resistant (CO-H) sensor (4-Series)	54-47-19
Replacement ethylene oxide (ETO) sensor (4-Series)	SR-ER04
Replacement hydrogen (H ₂) sensor (4-Series)	SR-RR04
Replacement hydrogen sulfide (H ₂ S), extended range sensor (4-Series)	PS-RH04S
Replacement hydrogen cyanide (HCN) sensor (4-Series)	SR-ZR04
Replacement ammonia (NH ₃) sensor (4-Series)	SR-A04
Replacement ammonia (NH ₃), extended range sensor (4-Series)	SR-A204
Replacement nitric oxide (NO) sensor (4-Series)	SR-NR04
Replacement nitrogen dioxide (NO ₂) sensor (4-Series)	PS-RD04
Replacement ozone (O ₃) sensor (4-Series)	SR-G04
Replacement phosphine (PH ₃) sensor (4-Series)	SR-P04
Replacement sulfur dioxide (SO ₂) sensor (4-Series)	PS-RS04

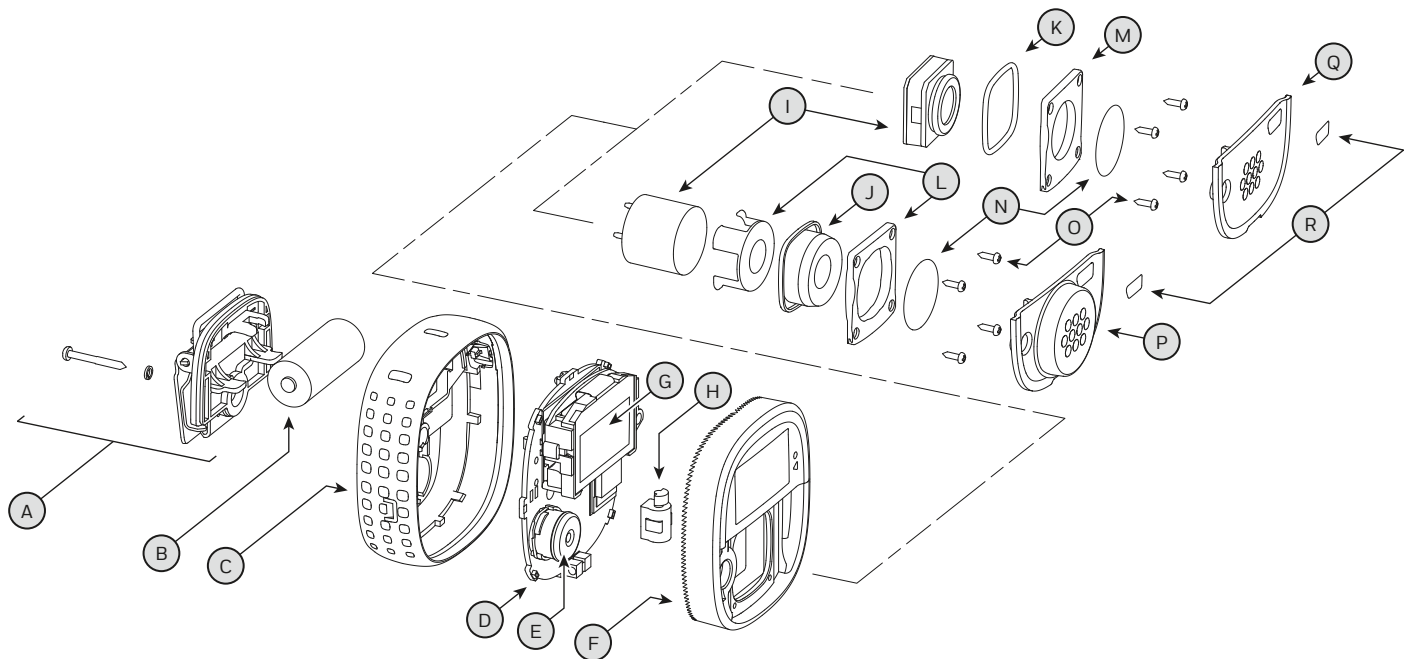
Honeywell BW™ Solo Serviceable Single-Gas Detector

ORDERING INFORMATION (CONTINUED)	
Replacement PCBs	Order Number
Replacement PCB, chlorine (Cl ₂), non-wireless	BWS-C-PCB1
Replacement PCB, chlorine dioxide (ClO ₂), non-wireless	BWS-V-PCB1
Replacement PCB, carbon monoxide (CO), non-wireless	BWS-ML-PCB1
Replacement PCB, carbon monoxide, hydrogen (h ₂) resistant (CO-H), non-wireless	BWS-M2-PCB1
Replacement PCB, ethylene oxide (ETO), non-wireless	BWS-E-PCB1
Replacement PCB, hydrogen (H ₂), non-wireless	BWS-R-PCB1
Replacement PCB, hydrogen sulfide (H ₂ S), non-wireless	BWS-HL-PCB1
Replacement PCB, hydrogen sulfide (H ₂ S), extended range, non-wireless	BWS-H-2-PCB1
Replacement PCB, hydrogen cyanide (HCN), non-wireless	BWS-Z-PCB1
Replacement PCB, ammonia (NH ₃), non-wireless	BWS-A-PCB1
Replacement PCB, ammonia (NH ₃), extended range, non-wireless	BWS-A2-PCB1
Replacement PCB, nitric oxide (NO), non-wireless	BWS-N-PCB1
Replacement PCB, nitrogen dioxide (NO ₂), non-wireless	BWS-D-PCB1
Replacement PCB, oxygen (O ₂), non-wireless	BWS-XL-PCB1
Replacement PCB, ozone (O ₃), non-wireless	BWS-G-PCB1
Replacement PCB, phosphine (PH ₃), non-wireless	BWS-P-PCB1
Replacement PCB, sulfur dioxide (SO ₂), non-wireless	BWS-S-PCB1
Replacement PCB, chlorine (Cl ₂), wireless	BWS1-C-PCB1
Replacement PCB, chlorine dioxide (ClO ₂), wireless	BWS1-V-PCB1
Replacement PCB, carbon monoxide (CO), wireless	BWS1-ML-PCB1
Replacement PCB, carbon monoxide, hydrogen (h ₂) resistant (CO-H), wireless	BWS1-M2-PCB1
Replacement PCB, ethylene oxide (ETO), wireless	BWS1-E-PCB1
Replacement PCB, hydrogen (H ₂), wireless	BWS1-R-PCB1
Replacement PCB, hydrogen sulfide (H ₂ S), wireless	BWS1-HL-PCB1
Replacement PCB, hydrogen sulfide (H ₂ S), extended range, wireless	BWS1-H-2-PCB1
Replacement PCB, hydrogen cyanide (HCN), wireless	BWS1-Z-PCB1
Replacement PCB, ammonia (NH ₃), wireless	BWS1-A-PCB1
Replacement PCB, ammonia (NH ₃), extended range, wireless	BWS1-A2-PCB1
Replacement PCB, nitric oxide (NO), wireless	BWS1-N-PCB1
Replacement PCB, nitrogen dioxide (NO ₂), wireless	BWS1-D-PCB1
Replacement PCB, oxygen (O ₂), wireless	BWS1-XL-PCB1
Replacement PCB, ozone (O ₃), wireless	BWS1-G-PCB1
Replacement PCB, phosphine (PH ₃), wireless	BWS1-P-PCB1
Replacement PCB, sulfur dioxide (SO ₂), wireless	BWS1-S-PCB1

Honeywell BW™ Solo Serviceable Single-Gas Detector

ORDERING INFORMATION (CONTINUED)	
Replacement Gas Type Labels	Order Number
Replacement gas label, chlorine (Cl ₂)	BWS-C-LABEL
Replacement gas label, chlorine dioxide (ClO ₂)	BWS-V-LABEL
Replacement gas label, carbon monoxide (CO)	BWS-M-LABEL
Replacement gas label, carbon monoxide, hydrogen (h ₂) resistant (CO-H)	BWS-M2-LABEL
Replacement gas label, ethylene oxide (ETO)	BWS-E-LABEL
Replacement gas label, hydrogen (H ₂)	BWS-R-LABEL
Replacement gas label, hydrogen sulfide (H ₂ S)	BWS-H-LABEL
Replacement gas label, hydrogen cyanide (HCN)	BWS-Z-LABEL
Replacement gas label, ammonia (NH ₃)	BWS-A-LABEL
Replacement gas label, nitric oxide (NO)	BWS-N-LABEL
Replacement gas label, nitrogen dioxide (NO ₂)	BWS-D-LABEL
Replacement gas label, oxygen (O ₂)	BWS-X-LABEL
Replacement gas label, ozone (O ₃)	BWS-G-LABEL
Replacement gas label, phosphine (PH ₃)	BWS-P-LABEL
Replacement gas label, sulfur dioxide (SO ₂)	BWS-S-LABEL

Honeywell BW™ Solo Serviceable Single-Gas Detector



Legend	Service Parts	Order Number
A	Replacement battery cover kit, non-wireless	BWS-BH-1
A	Replacement battery cover kit, wireless	BWS-BH-2
B	Replacement battery	BWS-BAT01
C	Replacement back shell, yellow	BWS-BC1
C	Replacement back shell, black	BWS-BC1B
D	Replacement PCB, see page 4	
E	Replacement buzzer sealing ring	BWS-HS-1
F	Replacement front shell	BWS-FC1
G	Replacement LCD	BWS-LCD
H	Replacement vibrator	GA-VM-2
I	Replacement sensors, see page 3	
J	Replacement 4-Series sensor sealing rings (kit of 10)	BWS-ORING-4S-K1
K	Replacement 1-Series sensor o-rings (kit of 10)	BWS-ORING-1S-K1
L	Replacement 4-Series sensor fixer kit <i>Includes one sensor sealing ring (J), one sensor fixer with metal insert (L), and four sensor fixer screws (O)</i>	BWS-4SC-1
M	Replacement 1-Series sensor fixer kit <i>Includes one sensor o-ring (K), one sensor fixer (M), and four sensor fixer screws (O)</i>	BWS-WSC-1
N	Replacement sensor screens (kit of 10)	BWS-SS
O	Replacement sensor fixer screws (kit of 25)	BWS-SCREW-K1
P	Replacement 4-Series front cover	BWS-4C-1
Q	Replacement 1-Series front cover	BWS-WC-1
R	Replacement gas type label, see page 5	

Note: Please refer to the instrument's documentation (shipped with the product or available at www.honeywellanalytics.com) for complete instructions on common service procedures. Improper servicing or maintenance may affect warranty eligibility. Honeywell assumes no liability for damages resulting from improper servicing or maintenance.

For more information

www.honeywellanalytics.com