

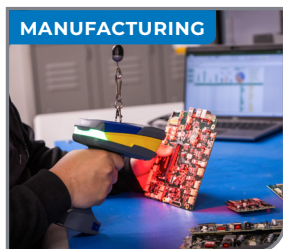


WIRELESS SCANNING DESIGNED TO MATCH YOUR WORKFLOW

V3200

WIRELESS BARCODE SCANNER

PROGRAMMABLE TO PERFORM ONLY THE FUNCTIONS YOU NEED
SIMPLIFY TASKS AND REDUCE ERRORS



ENGINEERED TO WITHSTAND DEMANDING ENVIRONMENTS
WITH FEATURES THAT KEEP THINGS RUNNING SMOOTHLY

Purpose-built with your job in mind:

- ▶ Stands up to industrial environments
- ▶ Survives multiple 8 ft. drops
- ▶ Water resistant per IP65
- ▶ JavaScript allows you to program only the functions you need
- ▶ Decode dirty, damaged and distorted surfaces

**HARD WORKING
AND
HASSLE FREE**



**FULL-SHIFT
BATTERY LIFE**



**LARGE WIRELESS
RANGE**



**EASY TO SET UP
AND CUSTOMIZE**

V3200 Scanner Kit



Catalog#	Description
178578	V3200 Kit - Scanner, Cradle, Battery, RJ50 to USB-A Cable and Power Cord

V3200 Accessories

Catalog#	Description
177230	V1100 Kit, Spare Charger, 2 Batteries, AC Adapter, Power Cord
177232	V1300 Only Kit, Cradle, AC Adapter, USB (1m) Cable, Power Cord
177234	V1200 Battery
178320	V1400 Industrial Ethernet Bluetooth Cradle Kit, Power and Comms Connector Cable (.5m), M12 to RJ45 Comms Cable (5m), M12 to Barrel Plug Power Cable (1m), AC Adapter, Power Cord
177237	USB to RJ50 Cable (1M)
177238	USB to RJ50 Cable (2.8M)
177239	RS232 to RJ50 Cable (1M)
177240	RS232 to RJ50 Cable (2.8M)
177241	Power Cord with AC Adapter

Physical Characteristics	
Scanner Dimensions	5.984 in. L x 3.386 in. W x 7.776 in. H (152mm X 86mm x 197.5mm)
Charging Station Dimensions	10.079 in. L x 4.449 in. W x 2.953 H (256mm x 113mm x 75mm)
Scanner Weight	1.11 lbs (500 g)
Charging Station Weight	1.018 lbs (462 g)
IP Rating	IP 65
Colors	Blue, Yellow and Gray

Performance Characteristics	
Field of View	High density field: 30° horizontal by 20° vertical; Wide field: 50° horizontal by 33.5° vertical
Focal Point	Approximately 3.9 in. (100 mm)
Sensor	CMOS 1.2 megapixel (1280 x 960) gray scale
Optical Resolution	High density field: 960 x 640; wide field: 960 x 640
Pitch	± 65° (from front to back)
Skew	± 60° from plane parallel to symbol (side-to-side)
Rotational Tolerance	± 180°
Symbol Contrast	15% minimum reflectance difference
Illumination	Red LEDs, 640nm
Target Beam	Single blue targeting bar, 470 nm
Ambient Light Immunity	Sunlight: Up to 9,000 fc (96,890 lux)
Shock Resistance	Multiple drops at 8ft onto concrete and MIL-STD-810G drop
Crush	250 lbs-ft
Bluetooth Radio Range	328 ft (100m) direct line of sight in open air
User Indications	Lights, sound and vibration
Power Requirements	9VDC, Max 1.5A
Number of Scans	100,000+
Battery	Lithium Ion, 3.6V, 3300mAh
ESD Protection	15 kV air, 8 kV direct
Charge Station Communication Interfaces	USB 2.0 (Generic HID, HID Keyboard)
Scanner Communication	Bluetooth® 5 Low Energy (Class II)
Supported Host Interfaces	USB 2.0 (Generic HID, HID keyboard, Virtual COM port), RS232
Warranty	3 Years Scanner & Cradle; 1 Year Battery

User Environment	
Operating Temperature	-4° to 122° F (-20° to 50° C)
Storage Temperature	-22° to 150° F (-30° to 65° C)
Humidity	5% to 95% non-condensing
Decode Capability	1D: BC412, Codabar, Code 11, Code 32, Code 39, Code 93, Code 128, IATA 2 of 5, Interleaved 2 of 5, GS1 DataBar, Hong Kong 2 of 5, Matrix 2 of 5, MSI Plessey, NEC 2 of 5, Pharmacode, Plessey, Straight 2 of 5, Telepen, Trioptic, UPC/EAN/JAN
	Stacked 1D: Codablock F, Code 49, GS1 Composite (CC-A/CC-B/CC-C), MicroPDF, PDF417
	2D: Aztec Code, Data Matrix, Data Matrix Rectangular Extension, Grid Matrix, Han Xin, Maxicode, Micro QR Code, QR Code, QR Model 1
	Proprietary 2D: GoCode® (optional license required)
	Postal codes: Australian Post, Canada Post, Intelligent Mail, Japan Post, KIX Code, Korea Post, Post-Net, Planet, UK Royal Mail, UPU ID-tags
	Formats: JPEG or PGM
	High density or wide field
	JavaScript
	GS1, HIBC, driver's licenses and ID cards (optional license required)
Data Structure Validation	ISO15418, ISO15434, HIBC UDI
Environmental Regulatory	RoHS, REACH
Harsh Environment	WD-40, Lubricating Oil, Bearing Grease, Aluminum and Steel Cutting Oil, 99% Isopropyl Alcohol, Acetone, Ammonia Solution, Bleach
EMI/RFI	EN 55032:2015/A11:2020 - Class B, EN 55035:2017/A11:2020, EN 62311:2008, EN 61000-3-2 - Class A, EN 61000-3-3, EN 300328
LED Safety	IEC 62471
Electrical Safety	UL 60950-1 2nd Ed, UL 62368-1 3rd Ed, CSA C22.2 No. 60950-1 2nd Ed, CSA C22.2 No. 62368-1 3rd Ed, IEC 60950-1 2nd Ed, IEC 62368-1 2nd Ed, IEC 62368-1 3rd Ed, EN 63000 (RoHS)

Typical Working Ranges*								
	Code 128 (1D)			Datamatrix (2D)	QR Code (2D)			
	5 mil	20 mil	40 mil	5 mil	10 mil	20 mil	40 mil	100 mil
Min inches	0.6" (15 mm)	3.7" (94 mm)	9.0" (229 mm)	1.3" (33 mm)	0.2" (5 mm)	1.0" (25 mm)	2.2" (56 mm)	4.5" (114 mm)
Max inches	5.6" (142 mm)	22.4" (569 mm)	36.3" (922 mm)	4.1" (105 mm)	6.8" (173 mm)	12.3" (312 mm)	24.3" (617 mm)	48.7" (1267 mm)

*Printing resolution, contrast, and ambient light dependent



SEE OUR
FULL LINE OF
SCANNERS
IN ACTION