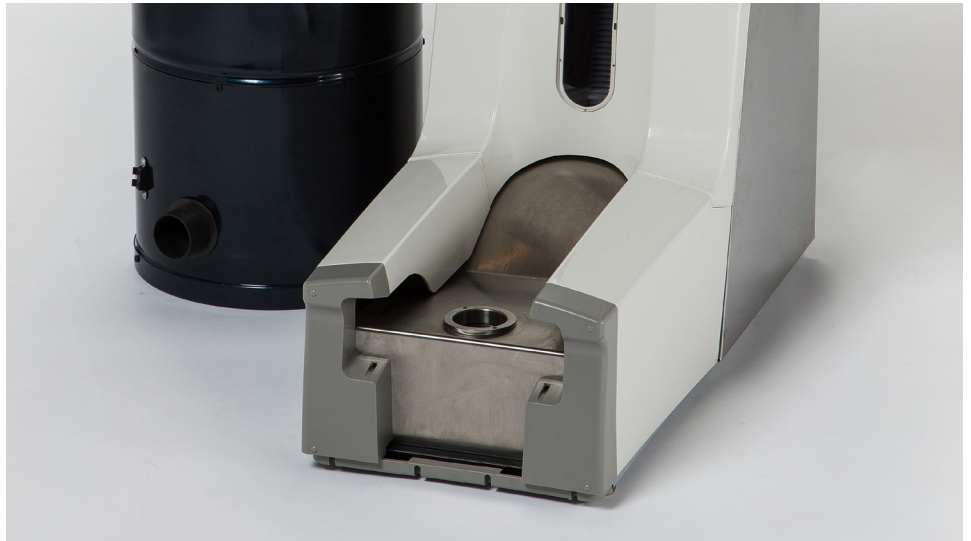




## How to Assemble and Setup a Bootie Butler® Shoe Cover Remover

**BootieButler™**

This instruction manual is designed to assist you in the assembly of the  
BootieButler® Shoe Cover Remover.



### COMPONENTS

**Before you begin, ensure all of the following components are present:**

**Standard Unit:**

- Remover Unit
- Remover Unit's Handle
- Remover Unit's Cover
- 5' Vacuum Hose with clamps
- Vacuum Canister
- 1 RMHB (HEPA) Filter Bag
- 1 (3 pack) RMSR Standard Paper Filters
- Blue External Wire Connector Bundle
- Phillips head screw driver
- Four Screws

**High Capacity Unit:**

- 33 or 55 gallon Receptacle Bin
- 8' Vacuum Hoses with clamps
- 5 RMLB High Capacity Paper Filters



**Additional Accessories**

*(sold separately)*

- Claw Adapter for Remover Unit (required for use of non-woven booties). Allen Wrench included
- PVC Vacuum Approved Pipe (extends distance between Remover Unit and Vacuum Canister up to 300 feet). The adapter is placed on the outlet of the Vacuum Canister Unit and one side of the PVC vacuum approved pipe.
- Muffler Unit for quieter operation



## How to Assemble and Setup a Bootie Butler® Shoe Cover Remover

**BootieButler™**

### COMPONENTS



#### **Remover Unit:**

The Remover Unit is the part of the Bootie Butler® Remover System with which the user first comes in contact. This unit is designed to remove disposable shoe covers from the feet of the user.



#### **Vacuum Canister:**

The Vacuum Canister is what powers the system. The unit's powerful suction allows for it to be placed in a separate location from the Remover Unit, at a distance of up to 300 feet (with PVC vacuum approved pipe). Available in 120-volt or 220-volt. Used shoe covers are collected in the air filtration bag placed inside this unit or the optional receptacle units: bag options include standard filter bags (RMSR) or HEPA filtration bags (RMHB).



#### **The 33 or 55 Gallon Receptacle Unit:**

The 33 or 55 gallon Receptacle Unit, and its accompanying high-capacity RMLB filter bag, hold up to 1500/2500 used shoe covers. This unit, as well as the Vacuum Canister, is coated with a long-lasting, rust-preventative coating.





# How to Assemble and Setup a Bootie Butler® Shoe Cover Remover

**BootieButler™**

## ASSEMBLE REMOVER UNIT

### STEP 1:

**Insert the remover handle into the top of the Remover Unit.**

Align the handle's 4 screw holes with the corresponding ones in the Remover Unit. Do not insert or tighten the screws yet.

*Note: Unit is pictured here from the back. Ensure that button is up.*



### STEP 2:

**Gently pull to expose the wire from within the remover handle. Do not detach the wire from the handle.**



### STEP 3:

**Insert and tighten the 4 bolts into the previously aligned holes in the remover handle.**

Tighten with a Phillips head screwdriver, taking care not to overtighten the bolts.





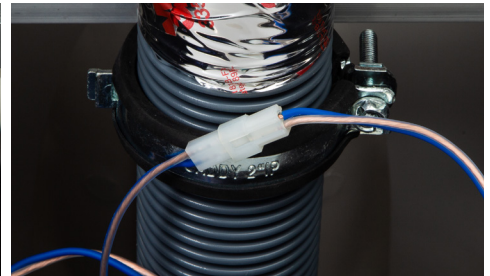
# How to Assemble and Setup a Bootie Butler® Shoe Cover Remover

BootieButler™

## ASSEMBLE REMOVER UNIT (CONTINUED)

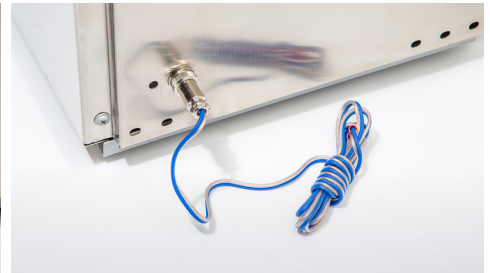
### STEP 4:

Connect the remover handle wire to the connector wire, found taped to the stainless steel pipe of the Remover Unit.



### STEP 5:

Connect and screw the external wire connector to the back of the Remover Unit.

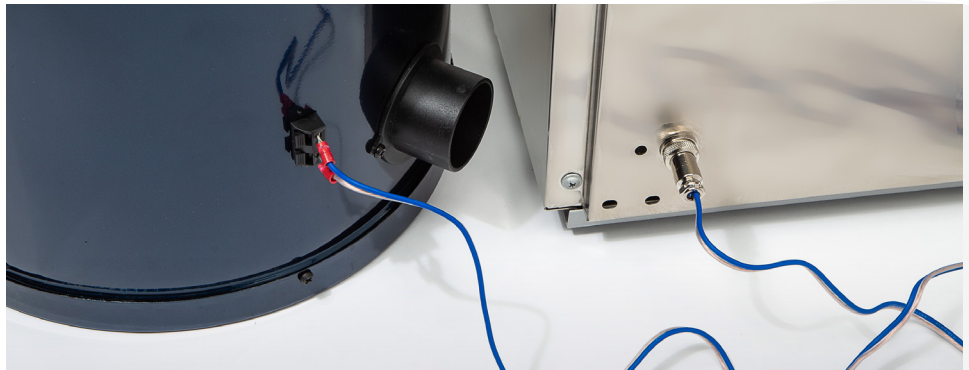


## CONNECT VACUUM CANISTER

### STEP 6:

Place the Vacuum Canister next to the Remover Unit. Connect the red leads of the external wire connector with the black spring clip terminals, located on the bottom of the Vacuum Canister.

Additional speaker wire (not provided) can be used to extend the distance between the Remover Unit and the Vacuum Canister. To extend the activation range up to 250 ft., however, we recommend using the pre-installed wireless transmitter/receiver, found connected to the Remover Unit and the Vacuum Canister.







## How to Assemble and Setup a Bootie Butler® Shoe Cover Remover

**BootieButler™**

### INSTALL PLASTIC COVER

#### STEP 7:

Install the plastic cover to the top of the Remover Unit, careful to note the hinges. Close the lid (You should hear two clicks).



### ATTACH SMALL VACUUM HOSE

#### STEP 8:

Attach the metal ring by screwing it back into the steel pipe.



#### STEP 9:

Attach one end of the small, 5 ft. vacuum hose to the top of the Remover Unit. Secure the connection by tightening the yellow tab.



# How to Assemble and Setup a Bootie Butler® Shoe Cover Remover



## SETUP/CONNECT RECEPTACLE BIN

### STEP 10:

Locate the large, 33 or 55 gallon Receptacle Bin and the RMLB High Capacity Paper Filters. Open the lid of the bin, and attach a filter bag to the hose outlet inside the lid.

NOTE: Skip to step 13 if not using the 33 or 55 gallon receptacle.



## ATTACH VACUUM HOSE

### STEP 11:

Attach the other end of the small, 5 ft. vacuum hose to the top of the large Receptacle Bin. Secure by tightening the yellow tab.

The small vacuum hose connects the top of the 33 or 55 gallon Receptacle Bin. The large vacuum hose connects the bottom of the Receptacle Bin to top of the Vacuum Canister.



### STEP 12:

Attach one end of the large, 8 ft. vacuum hose to the bottom outlet of the large Receptacle Bin. Tighten the yellow tab.





# How to Assemble and Setup a Bootie Butler® Shoe Cover Remover



## ATTACH VACUUM HOSE (CONTINUED)

### STEP 13:

Connect the other end of the large, 8 ft. vacuum hose to the top outlet of the Vacuum Canister. Or 5' hose if not using receptacle bin. Tighten the yellow tab.

PLEASE NOTE: The bottom outlet is the exhaust part of the Vacuum Canister. Do not attach anything here, except for the provided muffler unit (shown), if desired.

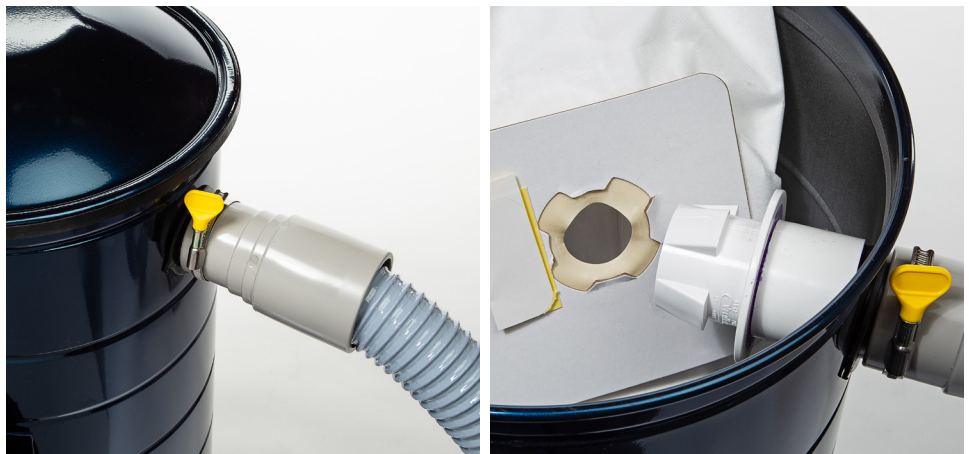


## CONNECT VACUUM CANISTER

### STEP 14: (Optional)

For additional air filtration, or HEPA compliance, connect either the RMHB or RMSR air filter onto the inner, side-wall port that's found within the Vacuum Canister and opposite the upper, outer hose port.

Note: Using the RMHB filter, not the RMSR filter, makes the system a complete HEPA filtration system.



## ATTACH MUFFLER

### STEP 15: (Optional)

Attach the muffler to the bottom outlet of the Vacuum Canister. Do not attach anything here, except for the provided muffler unit, if desired.





## How to Assemble and Setup a Bootie Butler® Shoe Cover Remover

BootieButler™

### USING YOUR SYSTEM

#### STEP 16:

Plug the Vacuum Canister's power cable into a nearby outlet.

Your Bootie Butler® High Capacity Shoe Cover Remover System is now fully assembled and ready for use.

To use, simply press and hold the remover handle button, while passing your covered shoe over the remover unit. Your 33 or 55 gallon Receptacle Bin's filter bag is full when it sounds sluggish and loses suction. Simply change your RMLB filter, following step 10, to resume use.

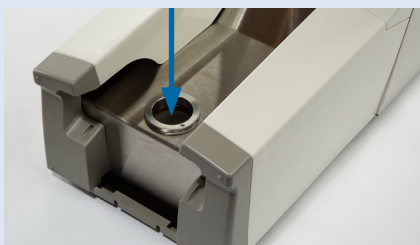


### ADAPTER FOR NON-WOVEN BOOTIES

If you are using non-woven booties, the Remover Unit will require an adapter piece (sold separately). Follow these instructions to install it or, for more assistance, watch our instructional videos at [bootiebutler.com/videos](http://bootiebutler.com/videos).

#### STEP 17:

Locate the adapter and the Allen wrench.



#### STEP 18:

Using the Allen wrench, loosen the adapter's 3 screws so it may fit over the Remover Unit.



#### STEP 19:

Retighten all 3 screws to ensure that the adapter is secured.

