



Tools for
Advancing
Innovation

Magnifying Lamp

Selection Guide



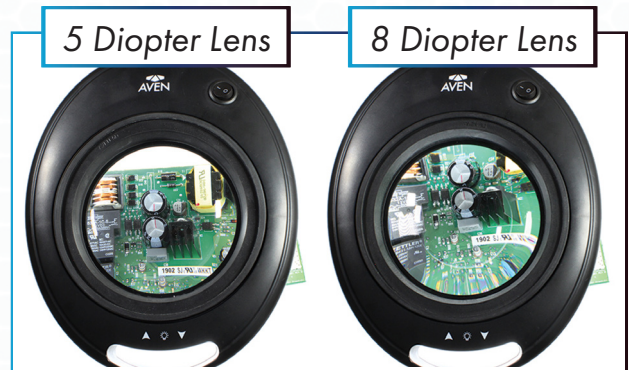
A Closer Vue

Selecting the Right Mag Lamp

Diopter/Magnification

Diopter refers to the curvature of the magnifying lens. The larger the diopter, the thicker the lens and the higher the magnification. However, with greater magnification comes decreased working distance and a smaller field of view.

To find the magnification of a given lens, divide its diopter by 4 and add 1: for example, Aven's Pro Vue SuperSlim Magnifying 8 Diopter lamp offers 3x magnification because $8 \text{ diopter} / 4 + 1 = 3x$ magnification.



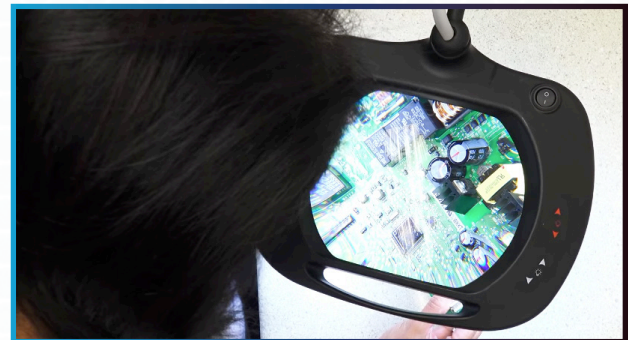
Working Distance/Focal Length

Working distance or focal length is the distance from the lens that's needed to keep the object in focus. The larger the magnification power of a lens, the closer the lens must be to an object to keep it in focus. Consequently, higher magnification will result in a smaller area for operators to work with under the lens.



Field of View

This is the size of the magnified area in focus under the lens – the higher the magnification, the smaller the field of view. Field of view is like zooming in/out on an online map where you can choose to either see all of the side streets in a few city blocks (low field of view) or look at an entire city without all of the smaller details (higher field of view).



ESD Safe

An ESD safe tool is one that has been treated to prevent the buildup and discharge of static electricity. Mag lamps are made ESD safe in various ways, including applying special polymers to their lenses and constructing them of non-reactive materials like aluminum. ESD safety is an important consideration for users who are working with any electrical component, from circuitry to computer chips.



The Aven Advantage

Superior Components for a Superior Vue

Enclosed Arms



An enclosed arm means no partially or fully exposed springs which eliminates pinching hazards and protects the arm's mechanisms from damage. Aven magnifying lamps are designed to allow users to lock the lamp in any position, adding flexibility to any task or work bench.

SMD LED Illumination



All Aven LED magnifying lamps come equipped with surface-mounted LED circuit boards. Ultra-bright, shadow-free illumination, rated to provide high-output performance over a minimum of 20,000+ hours of use.

Crystal-Clear Glass Lenses



While some economy model magnifying lamps feature a cost-savings plastic lens, all Aven lamps feature high quality glass lenses for distortion-free viewing. Our product line features 8-diopter, 5-diopter and 3-diopter options to suit the needs of various magnification and working distance needs.

Beautifully Crafted Designs



In addition to high quality optics, illumination, and build quality, Aven's magnifying lamps were also designed to look distinctive. These sleek designs are exclusive to Aven and set us apart from the competition!

3-Year Warranty

Aven's magnifying lamps now feature a 3-year warranty. This extended warranty reaffirms Aven's commitment to providing the industry with the highest quality magnifying lamp products at competitive prices. To Learn more about Aven's warranty visit aventools.com/warranty

Aven Magnifying Lamps

Mighty Vue Pro

Control your Vue with the **Mighty Vue Pro** line of magnifying lamps. Two lamps feature exclusive brightness + color temperature capabilities and our newest Mighty Vue Pro UV features 48 white adjustable LEDs and a UV LED option. Aven's Mighty Vue Pro series of magnifying lamps are some of the most advanced magnifying lamps available!

Models

26505-ESL-XL5 - 5-Diopter Magnifying Lamp w/ Color Temperature Controls | ESD Safe (Black)

26505-ESL-XL5-UV - 5-Diopter Magnifying Lamp w/ UV & White LEDs | ESD Safe (Black)

26505-LED-XL3 - 3-Diopter Magnifying Lamp (White)



In-X

Aven's **In-X** redefines what is possible with a magnifying lamp. This cutting edge lamp is designed to greatly expand the magnification range beyond what a standard magnifying lamp can offer by accommodating multiple lenses. The exclusive lenses are housed in a rubberized ring, designed for easy lens exchange. Includes a crystal-clear 5 diopter glass lens (2.25x magnification).

Models

26501-LED-INX - In-X Interchangeable Magnifying Lamp w/ 5 Diopter Lens

26501-LED-INX-8D - In-X Interchangeable Magnifying Lamp 8 Diopter Bundled w/ a 5 Diopter Lens

26501-LED-INX-12D - In-X Interchangeable Magnifying Lamp 12 Diopter Bundled w/ a 5 Diopter Lens

26501-LED-INX-15D - In-X Interchangeable Magnifying Lamp 15 Diopter Bundled w/ a 5 Diopter Lens



ProVue Solas

Aven's **ProVue Solas** magnifying lamps offer the flexibility of using an interchangeable lens. This lamp features 60 ultra bright SMD LEDs with brightness controls, a fully enclosed spring-balanced arm, protective lens cover, and a heavy-duty table clamp.

Models

26501-XL35 - ProVue Solas Magnifying Lamp XL35 w/ Interchangeable 5 Diopter Lens

26501-XL58 - ProVue Solas Magnifying Lamp XL58 w/ Interchangeable 8 Diopter Lens



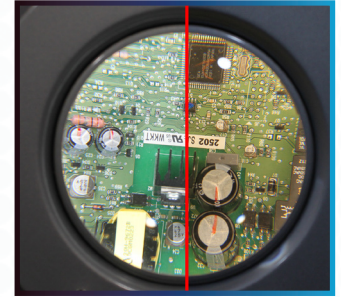
Magnifying Lamps Continued...

Deluxe Series

Aven's **Deluxe Series** magnifying lamps are beautifully crafted and built to last a lifetime. Durable aluminum construction, multiple locking joints, and spring-free friction arms. Aven's Deluxe Series lamps also feature dual temperature brightness intensity controls with 36 ultra-bright energy-efficient white LEDs and 36 Amber LEDs for shadow-free illumination.

Model

26501-LFL-LED - ProVue Deluxe Magnifying Lamp 5 Diopter w/ White & Amber LEDs

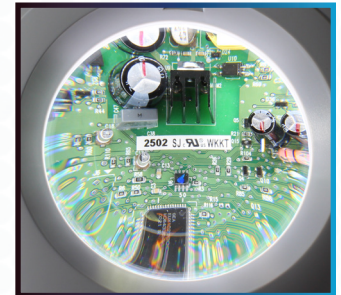


ProVue SuperSlim

The innovative **ProVue SuperSlim** is a durable and powerful magnifying lamp. Featuring 60 energy-efficient LED Lights for bright, shadow-free illumination for your work bench.

Models

26501-LED - ProVue SuperSlim LED Magnifying Lamp 5 Diopter Lens
26501-LED-8D - ProVue SuperSlim LED Magnifying Lamp 8 Diopter Lens



Mighty Vue Slim

Aven's **Mighty Vue Slim** magnifying lamps feature 60 energy-saving SMD LEDs and an adjustable tension knob that keeps the lamp set in any position. This lamp also features a 4x6 inch 5-diopter rectangular glass lens, rotatable lamp head, protective lens cover, and brightness intensity controls.

Model

26505-MX5 - Mighty Vue Slim 5 Diopter LED Magnifying Lamp



Mighty Vue Inspector



Mighty Vue Inspector

The **Mighty Vue Inspector** is a magnifying lamp and camera inspection system in one self-contained unit, allowing you to view the image directly on an HDMI monitor, capture images on the included microSD Card, and even connect to your PC for viewing or relocating saved images, and additional software features.

Models

26510-CAM - Mighty Vue Inspector 3 Diopter Magnifying Lamp w/ Built-in Camera (White)

26512-CAM - Mighty Vue Inspector 5 Diopter Magnifying Lamp w/ Built-in Camera | ESD Safe (Black)



item # 26510-CAM



item # 26512-CAM



Magnifying Lamp Table

Product #	Diopter	Lens Size	Magnification	Working Distance	Color Temp	ESD Safe	Lighting
26501-LED-INX IN-X	5	5" Round	2.25x	8"	6500K		64 LEDs
26501-LED-INX-8D IN-X Bundle	8 & 5	5" Round	3x	5"	6500K		64 LEDs
26501-LED-INX-12D IN-X Bundle	12 & 5	3.75" Round	4x	3.5"	6500K		64 LEDs
26501-LED-INX-15D IN-X Bundle	15 & 5	3.75" Round	4.75x	1"	6500K		64 LEDs
26501-XL35 ProVue Solas	5	5" Round	2.25x	8"	6500K		60 SMD LEDs
26501-XL58 ProVue Solas	8	5" Round	3x	5"	6500K		60 SMD LEDs
26501-LED ProVue SuperSlim	5	5" Round	2.25x	8"	6500K		60 SMD LEDs
26501-LED-8D ProVue SuperSlim 8 Diopter	8	5" Round	3x	5"	6500K		60 SMD LEDs
26501-LFL-LED ProVue Deluxe	5	5" Round	2.25x	8"	3500K - 6500K	✓	36 White LEDs 36 Warm LEDs
26505-ESL-XL5 Mighty Vue Pro 5 Diopter	5	7.5" x 6.2"	2.25x	8"	3500K/ 6500K	✓	30 White LEDs 30 Warm LEDs
26505-ESL-XL5-UV Mighty Vue Pro 5 Diopter w/ UV & White LEDs	5	7.5" x 6.2"	2.25x	8"	6500K/ 400nm	✓	48 Adjustable White LEDs 30 UV LEDs
26505-ESL-XL3 Mighty Vue Pro 3 Diopter	3	7.5" x 6.2"	1.75x	13"	3500K/ 6500K		30 White LEDs 30 Warm LEDs
26505-MX5 Mighty Vue Slim	5	4" x 6"	2.25x	8"	6500K		60 SMD LEDs
26507-XL5 OptiVue Desk Lamp	5	4" Round	2.25x	8"	6500K		60 SMD LEDs
26510-CAM Mighty Vue Inspector 3 Diopter w/ Built in Camera	3	7.5" x 6.2"	1.75x	13"	3500K/ 6500K		30 White LEDs 30 Warm LEDs
26512-CAM Mighty Vue Inspector 5 Diopter w/ Built in Camera	5	7.5" x 6.2"	2.25x	8"	3500K/ 6500K	✓	30 White LEDs 30 Warm LEDs



Tools for
Advancing
Innovation



Contact US

4330 Varsity Dr,
Ann Arbor, MI 48108

Phone: 734-973-0099

sales@aventools.com

www.AvenTools.com

aventools.com | sales@aventools.com | 734.973.0099