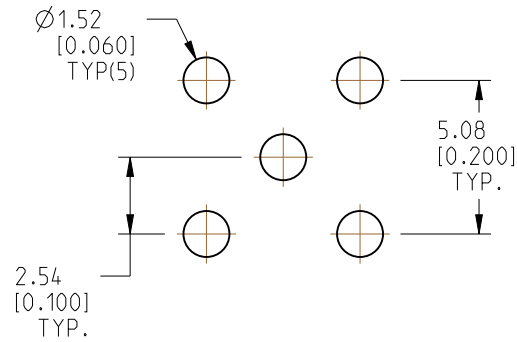


1. MATERIALS AND FINISHES:  
BODY - BRASS, GOLD PLATING  
CONTACT - BeCu, GOLD PLATING  
INSULATOR - PTFE, NATURAL
2. ELECTRICAL:  
A. IMPEDANCE: 75 OHM  
B. FREQUENCY RANGE: DC - 4 GHz  
C. DIELECTRIC WITHSTANDING VOLTAGE: 750 VRMS, MIN.
3. MECHANICAL:  
A. DURABILITY: 500 CYCLES MIN.  
B. TEMPERATURE RANGE: -65°C TO +165°C



A technical drawing of a 1/2 inch NPT female pipe fitting. It features a cylindrical body with a threaded section and a flange at the end. A 1/2 inch NPT male plug is shown inserted into the threaded section. The drawing is a black and white line drawing with a 3D perspective view.

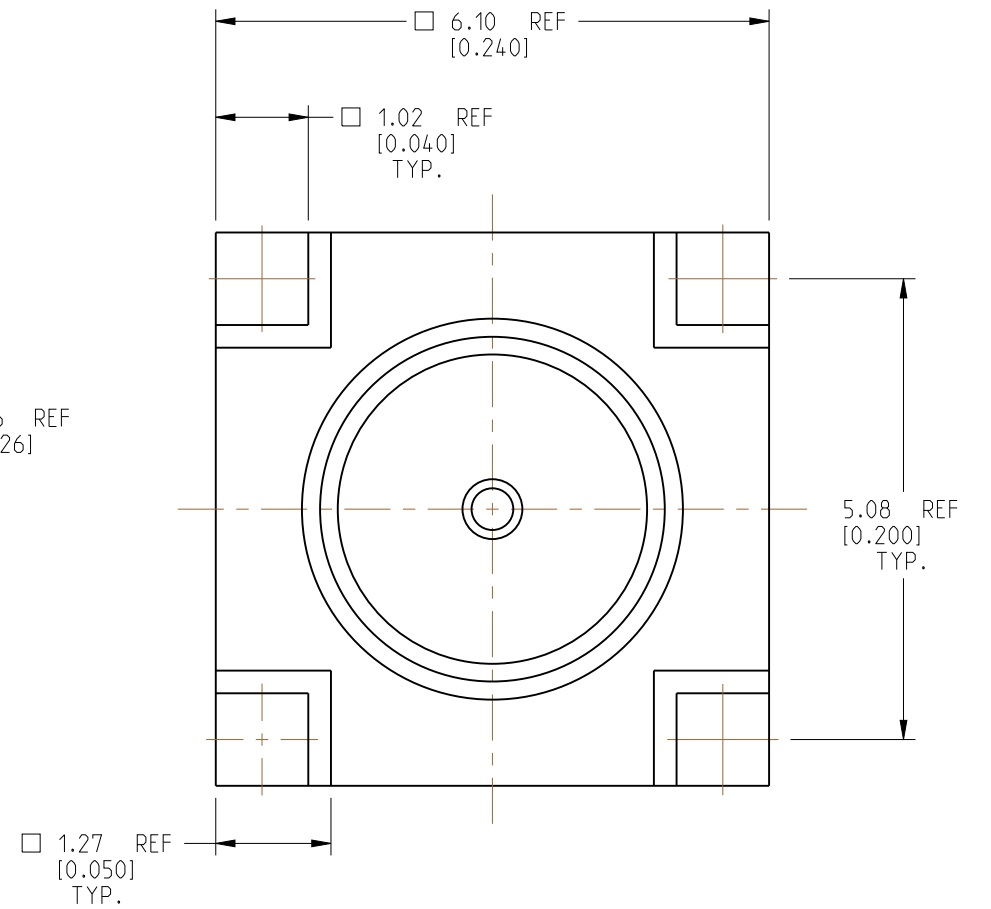
Technical drawing of a mechanical part, likely a connector or probe, showing dimensions and labels.

Dimensions (in inches [mm]):

- Overall length: 18.75 REF [0.738]
- Length of threaded section: 6.50 REF [0.256]
- Length of unthreaded section: 13.40 REF [0.528]
- Stand off: 0.50 REF [0.020]
- Tip diameter: 1.91 REF [0.075] TYP.
- Tip diameter: Ø0.66 REF [0.026]

Labels:

- INTERFACE PER 1.0/2.3 JACK
- M5.5XP0.5-6g THREAD



# PRELIMINARY ISSUE

## CUSTOMER OUTLINE DRAWING

ALL OTHER SHEETS ARE FOR INTERNAL USE ONLY

NOTICE: These drawings, specifications, or other data (1) are, and remain the property of Amphenol corp. (2) must be returned upon request; and (3) are confidential and not to be disclosed to any person other than those to whom they are given by Amphenol Corp. The furnishing of these drawings, specifications, or other data by Amphenol Corp., or to any other person to anyone for any purpose is not to be regarded by implication or otherwise in any manner licensing, granting rights to permitting such holder or any other person to manufacture, use or sell any product, process or design, patented or otherwise, that may in any way be related to or disclosed by said drawings, specifications, or other data.

UNLESS OTHERWISE SPECIFIED  
DIMENSIONS ARE METRIC (INCHES) AND TOLERANCES ARE:

<0.5mm = $\pm 0.05$ mm	[<0.020 = $\pm 0.002$ ]
0.5 - 6mm = $\pm 0.1$ mm	[0.020 - 0.236 = $\pm 0.004$ ]
>6.00 - 30mm = $\pm 0.2$ mm	[0.236 - 1.181 = $\pm 0.008$ ]
>30.00 - 120mm = $\pm 0.3$ mm	[1.181 - 4.725 = $\pm 0.012$ ]

MATERIAL	QTY	UNIT	PRICE	TOTAL
1000	100	100	100	100
2000	200	200	200	200
3000	300	300	300	300
4000	400	400	400	400
5000	500	500	500	500
6000	600	600	600	600
7000	700	700	700	700
8000	800	800	800	800
9000	900	900	900	900
10000	1000	1000	1000	1000
11000	1100	1100	1100	1100
12000	1200	1200	1200	1200
13000	1300	1300	1300	1300
14000	1400	1400	1400	1400
15000	1500	1500	1500	1500
16000	1600	1600	1600	1600
17000	1700	1700	1700	1700
18000	1800	1800	1800	1800
19000	1900	1900	1900	1900
20000	2000	2000	2000	2000
21000	2100	2100	2100	2100
22000	2200	2200	2200	2200
23000	2300	2300	2300	2300
24000	2400	2400	2400	2400
25000	2500	2500	2500	2500
26000	2600	2600	2600	2600
27000	2700	2700	2700	2700
28000	2800	2800	2800	2800
29000	2900	2900	2900	2900
30000	3000	3000	3000	3000
31000	3100	3100	3100	3100
32000	3200	3200	3200	3200
33000	3300	3300	3300	3300
34000	3400	3400	3400	3400
35000	3500	3500	3500	3500
36000	3600	3600	3600	3600
37000	3700	3700	3700	3700
38000	3800	3800	3800	3800
39000	3900	3900	3900	3900
40000	4000	4000	4000	4000
41000	4100	4100	4100	4100
42000	4200	4200	4200	4200
43000	4300	4300	4300	4300
44000	4400	4400	4400	4400
45000	4500	4500	4500	4500
46000	4600	4600	4600	4600
47000	4700	4700	4700	4700
48000	4800	4800	4800	4800
49000	4900	4900	4900	4900
50000	5000	5000	5000	5000
51000	5100	5100	5100	5100
52000	5200	5200	5200	5200
53000	5300	5300	5300	5300
54000	5400	5400	5400	5400
55000	5500	5500	5500	5500
56000	5600	5600	5600	5600
57000	5700	5700	5700	5700
58000	5800	5800	5800	5800
59000	5900	5900	5900	5900
60000	6000	6000	6000	6000
61000	6100	6100	6100	6100
62000	6200	6200	6200	6200
63000	6300	6300	6300	6300
64000	6400	6400	6400	6400
65000	6500	6500	6500	6500
66000	6600	6600	6600	6600
67000	6700	6700	6700	6700
68000	6800	6800	6800	6800
69000	6900	6900	6900	6900
70000	7000	7000	7000	7000
71000	7100			

SEE NOTES

---

---

TITLE
-------

75 OHM 1.0/2.3  
STR JACK PCB MOUNT  
WITH 4 LEGS

SIZE

D

DRAWING NO.	1236251P1-005-NX3GT10G-75
-------------	---------------------------

ITEM NO.	106251A A0A1K A7E
----------	-------------------

PART NO.	282124-75
----------	-----------

EV

—

THIRD ANGLE PROJ.



## REFERENCE

EAR#
------

-----  
 ANGLES =  $\pm 1^\circ$

ENGR.1

ENGR.2

DATE \_\_\_\_\_

27-Feb-07

SHEET NO. 2 OF 2

SCALE: 12.0:1.0

5

4.

3

2

1