

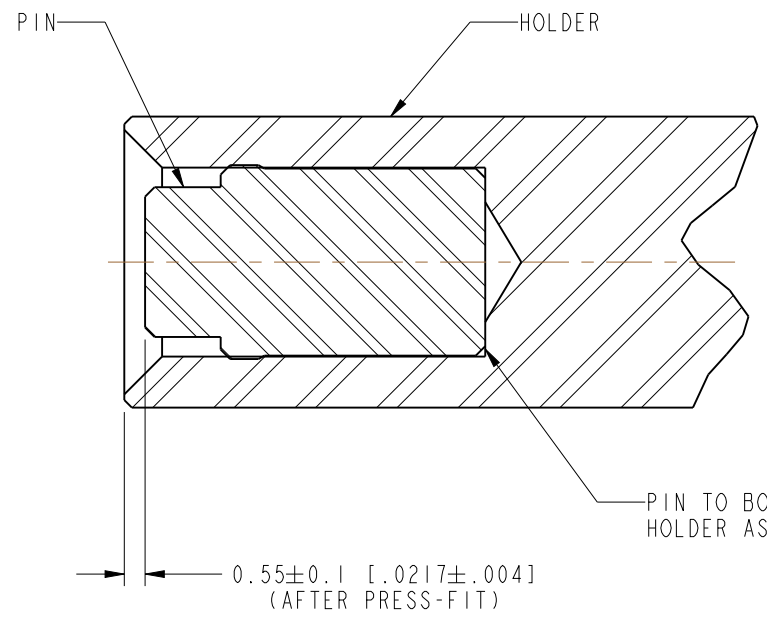
NOTES:

1. DO NOT SCALE THIS DRAWING.
2. UNLESS OTHERWISE SPECIFIED:
  - A. HOLES, SLOTS AND DIAMETERS TO BE PARALLEL AND CONCENTRIC WITHIN .08 MM [.003 IN] T.I.R.
  - B. REMOVE ALL BURRS, BREAK ALL SHARP EDGES .13 MM [.005 IN] MAX.
  - C. SURFACE FINISH TO BE 1.6 MICROMETERS [63 MICROINCHES] MAX.
  - D. ALL DIMENSIONS ARE BEFORE PLATING.
3. PART NUMBER CONTAINING LETTER SUFFIX REQUIRES PLATING PER AMPHENOL SPEC 349-50560.
4. PASSIVATE "PA" PER 349-50714
5. INDIVIDUALLY PACKAGE IN VILES.

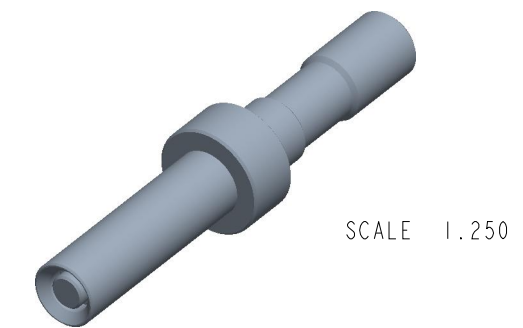
THIRD ANGLE PROJ.

REVISIONS

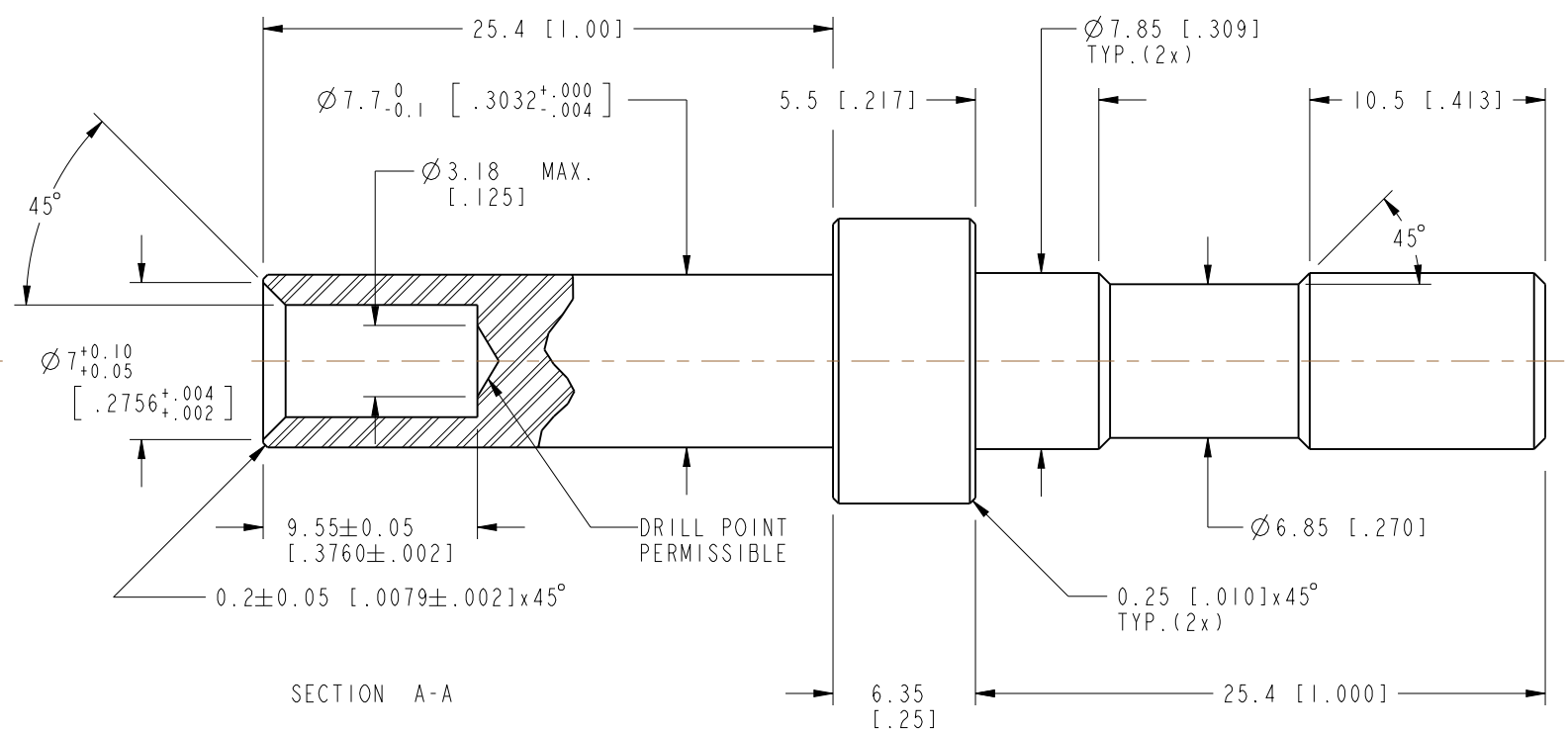
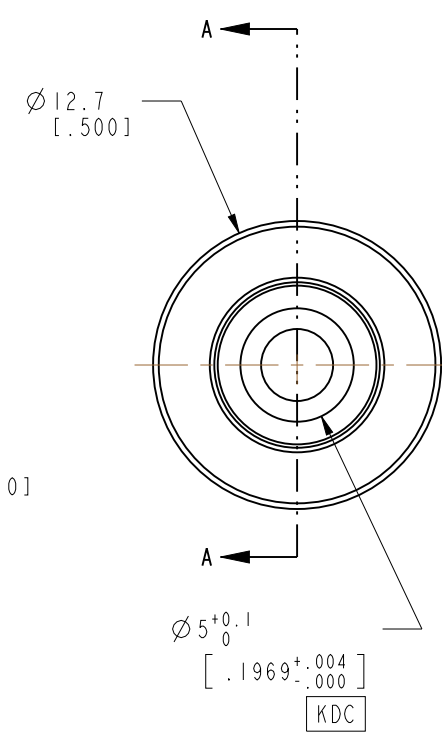
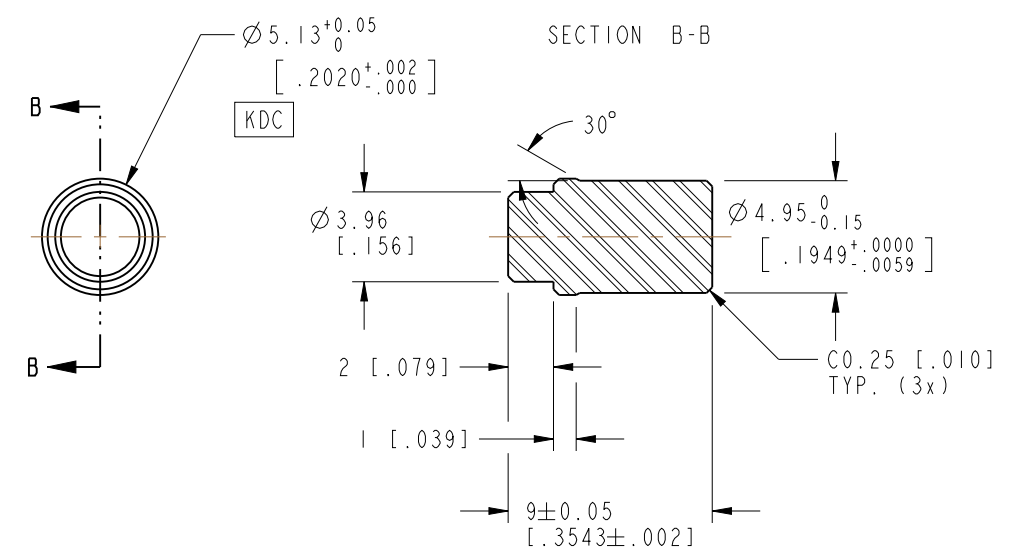
REV	DESCRIPTION	DATE	ECO	APPR
A	RELEASE TO MFG.	10/30/15	50463	BCG
B	ADDED: 0.2 x 45° CHAMFER CHANGE MATERIAL FROM HARDENED TO 303 SS	08-MAR-21	14748	RD



SECTION C-C  
SCALE 5.000



SCALE 1.250



SECTION A-A

UNLESS OTHERWISE SPECIFIED, DIMENSIONS ARE IN METRIC AND TOLERANCES ARE: 0.5 - 6mm ±0.1mm 6 - 30mm ±0.2mm 30 - 120mm ±0.3mm ANGLES ±1°	MATERIAL 303 STAINLESS STEEL PASSIVATED	DRAWN B.C. GLEISSNER	DATE 27-Jun-11	TITLE CAP INSTALLATION TOOL FOR 3FAIXNRJ-C0IE3			Amphenol RF Danbury CT USA, Tainan, Taiwan, Shenzhen, China www.amphenolrf.com		
	REFERENCE EAR 6219, 9670 AND ---	ENGINEER B.C. GLEISSNER	DATE 27-Jun-11						
NOTICE - These drawings, specifications, or other data (1) are, and remain the property of Amphenol corp. (2) must be returned upon request; and (3) are confidential and not to be disclosed to any person other than those to whom they are given by Amphenol Corp. the furnishing of these drawings, specifications, or other data by Amphenol Corp., or to any other person to anyone for any purpose is not to be regarded by implication or otherwise in any manner licensing, granting rights to permitting such holder or any other sperson to manufacture, use or sell any product, process or design, patented or otherwise, that may in any way be related to or disclosed by said drawings, specifications, or other data.	CONFIGURATION LEVEL: ---	APPROVED K. CAPOZZI	DATE 10/30/15	SCALE: 3.0:1.0	SHEET 1 OF 1	ITEM NO. 227-1537			
	FINISH	---/227-1537	DWG SIZE B	CODE ID 74868	REV B	PART NO. 227-1537			