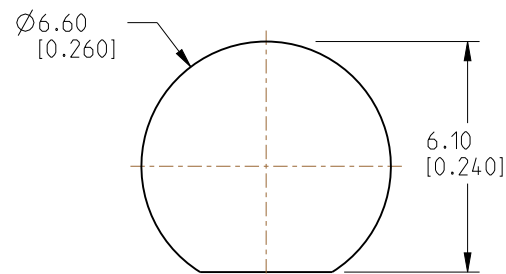


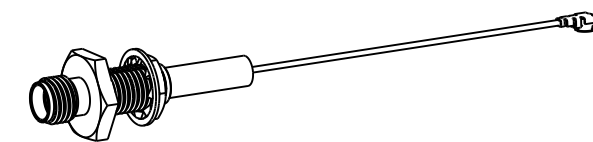
NOTES:

1. MATERIALS AND FINISHES:  
SMA STR BHD JACK - BRASS, GOLD PLATING  
  
AMC RA PLUG:  
HOUSING - PBT, BLACK  
CONTACT & GROUND CONTACT - PHOSPHOR BRONZE, GOLD PLATING  
  
CABLE - 1.13 MM CABLE
2. ELECTRICAL:  
A. IMPEDANCE: 50 OHM
3. PACKAGING:  
A. QUANTITY: SINGLE PACK  
B. MARKING: BAG TO BE MARKED  
"AMPHENOL RF, 95-902-545-XXX AND DATE CODE"

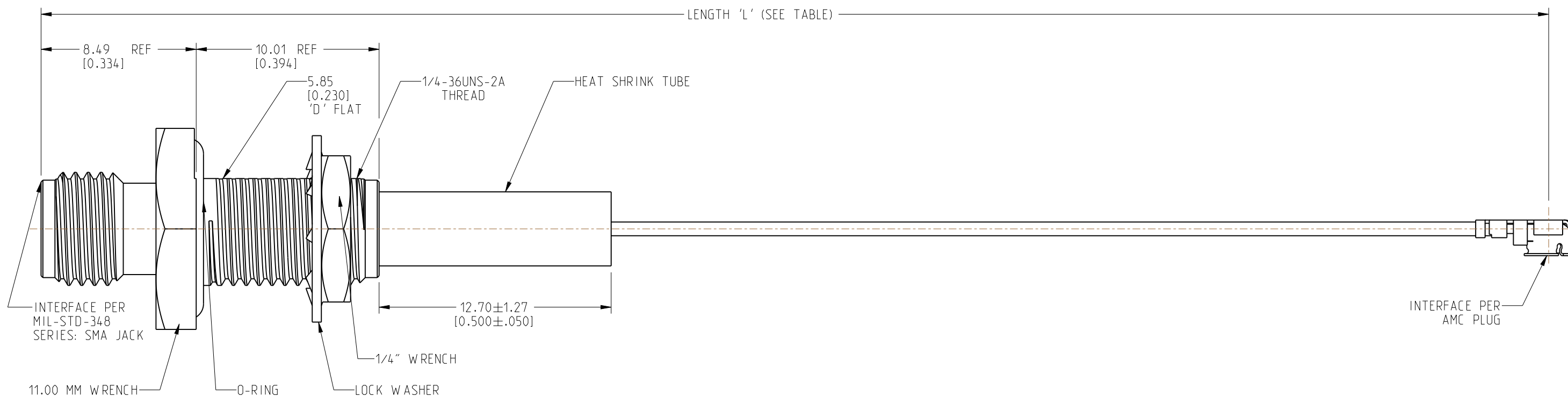
REVISIONS				
REV	DESCRIPTION	DATE	ECN	APPR
A	RELEASE TO MFG.	04-FEB-21	--	DG
B	DIMENSIONS, MOUNTING HOLE VIEW ADDED & PLATING GOLD WAS NICKEL	--	--	DK
C	UPDATED HEAT SHRINK TUBE LENGTH	04-JUN-21	15728	CC



**RECOMMENDED MOUNTING HOLE DIMENSIONS**



SCALE 1.000



LENGTH TABLE	
PART NUMBER (IMPERIAL)	LENGTH AND TOLERANCE 'L' IN MM (INCHES)
95-902-545-050	50.00 ± 3.81 [1.969 ± 0.150]
95-902-545-100	100.00 ± 3.81 [3.937 ± 0.150]
95-902-545-150	150.00 ± 3.81 [5.906 ± 0.150]
95-902-545-200	200.00 ± 5.08 [7.874 ± 0.200]
95-902-545-250	250.00 ± 5.08 [9.843 ± 0.200]
95-902-545-300	300.00 ± 5.08 [11.811 ± 0.200]

**DESIGN REQUIREMENTS:**

- |   |  |
|---|--|
| <input checked="" type="checkbox"/> FREQUENCY: DC - 6 GHz | <input checked="" type="checkbox"/> CONTINUITY       |
| <input type="checkbox"/> VSWR: _____ MAX.                 | <input checked="" type="checkbox"/> HI-POT: 200 VRMS |
| <input type="checkbox"/> INS. LOSS: _____ dB MAX.         | <input type="checkbox"/> OTHER:                      |

**CUSTOMER OUTLINE DRAWING**

ALL OTHER SHEETS ARE FOR INTERNAL USE ONLY

NOTICE: These drawings, specifications, or other data (1) are, and remain the property of Amphenol corp. (2) must be returned upon request; and (3) are confidential and not to be disclosed to any person other than those to whom they are given by Amphenol Corp. The furnishing of these drawings, specifications, or other data by Amphenol Corp., or to any other person to anyone for any purpose is not to be regarded by implication or otherwise in any manner licensing, granting rights to permitting such holder or any other person to manufacture, use or sell any product, process or design, patented or otherwise, that may in any way be related to or disclosed by said drawings, specifications, or other data.		UNLESS OTHERWISE SPECIFIED DIMENSIONS ARE METRIC (INCHES) AND TOLERANCES ARE: <0.5mm = ±0.05mm [-0.020 = ±0.002] >0.5 - 6mm = ±0.1mm [0.020 - 0.236 = ±0.004] >6.00 - 30mm = ±0.2mm [0.236 - 1.181 = ±0.008] >30.00 - 120mm = ±0.3mm [1.181 - 4.725 = ±0.012]		MATERIAL SEE NOTES		TITLE SMA STR BHD JACK FRONT MOUNT IP 67 TO AMC RA PLUG USING 1.13 MM CABLE VARIOUS LENGTH		<p style="text-align: center;"><b>Amphenol RF</b></p> <table border="1"> <tr> <td>SIZE</td> <td>DRAWING NO. 95-902-545-XXX</td> <td>REV</td> </tr> <tr> <td></td> <td>ITEM NO. 95-902-545-XXX</td> <td></td> </tr> <tr> <td></td> <td>PART NO. 95-902-545-XXX</td> <td></td> </tr> </table>		SIZE	DRAWING NO. 95-902-545-XXX	REV		ITEM NO. 95-902-545-XXX			PART NO. 95-902-545-XXX	
SIZE	DRAWING NO. 95-902-545-XXX	REV																
	ITEM NO. 95-902-545-XXX																	
	PART NO. 95-902-545-XXX																	
THIRD ANGLE PROJ.	REFERENCE	ENGR.1 D. GEORGE	ENGR.2	DATE 04-FEB-21	SHEET NO. 2 OF 2	SCALE: 5.0:1.0	<table border="1"> <tr> <td>EAR# 10473</td> <td>ANGLES = ±1°</td> <td></td> </tr> </table>		EAR# 10473	ANGLES = ±1°								
EAR# 10473	ANGLES = ±1°																	