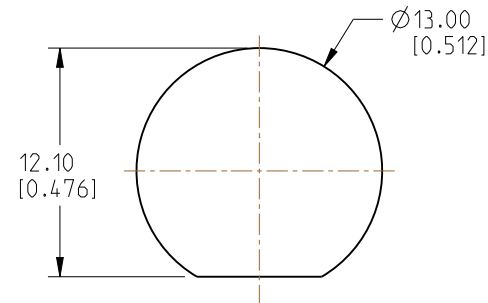


1. MATERIALS AND FINISHES:  
TNC STR BHD JACK IP 67 - BRASS, NICKEL PLATING

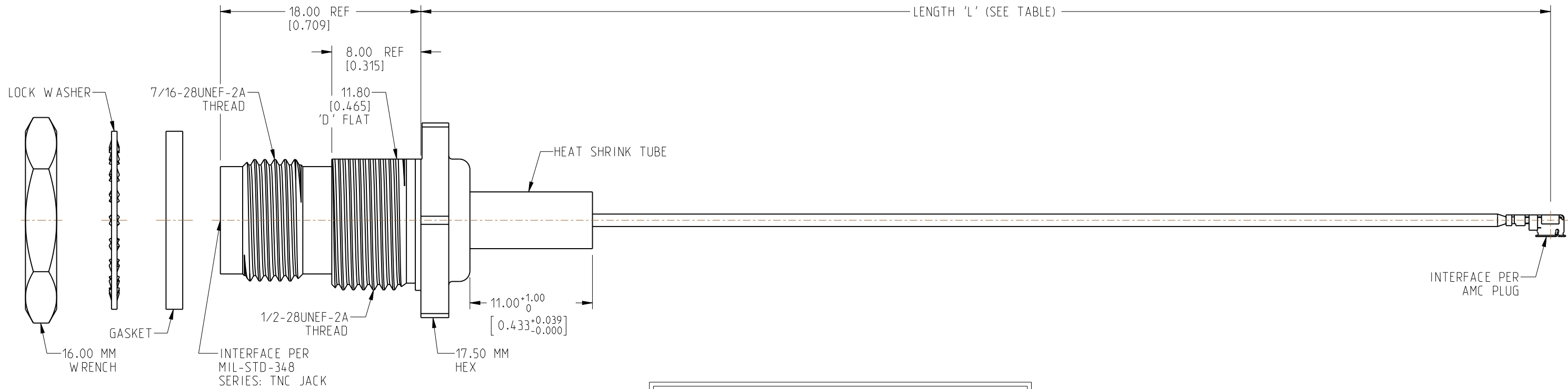
CABLE - RG 178

3. PACKAGING:  
A. QUANTITY: SINGLE PACK  
B. MARKING: BAG TO BE MARKED  
"AMPHENOL RF, 95-850-284-XXX AND DATE CODE"



A technical drawing of a long, thin rod. The left end features a hexagonal base with a threaded section. The rod extends horizontally to the right, ending in a small, dark, rounded tip.

SCALE 0.700



| LENGTH TABLE              |  |
|---------------------------|--|
| PART NUMBER<br>(IMPERIAL) | LENGTH AND TOLERANCE 'L'<br>IN MM (INCHES) |
| 95-850-284-050            | 50.00 ± 3.81 [1.969 ± 0.150]               |
| 95-850-284-100            | 100.00 ± 3.81 [3.937 ± 0.150]              |
| 95-850-284-150            | 150.00 ± 3.81 [5.906 ± 0.150]              |
| 95-850-284-200            | 200.00 ± 5.08 [7.874 ± 0.200]              |
| 95-850-284-250            | 250.00 ± 5.08 [9.843 ± 0.200]              |
| 95-850-284-300            | 300.00 ± 5.08 [11.811 ± 0.200]             |

|   |  |
|---|--|
| <input checked="" type="checkbox"/> FREQUENCY: DC - 6 GHz | <input checked="" type="checkbox"/> CONTINUITY       |
| <input type="checkbox"/> VSWR: ____ MAX.                  | <input checked="" type="checkbox"/> HI-POT: 200 VRMS |
| <input type="checkbox"/> INS. LOSS: ____ dB MAX.          | <input type="checkbox"/> OTHER:                      |

NOTICE: These drawings, specifications, or other data (1) are, and remain the property of Amphenol corp (2) must be returned upon request; and (3) are confidential and not to be disclosed to any person other than those to whom they are given by Amphenol Corp. The furnishing of these drawings, specifications, or other data by Amphenol Corp., or to any other person to anyone for any purpose is not to be regarded by implication or otherwise in any manner licensing, granting rights to permitting such holder or any other person to manufacture, use or sell any product, process or design, patented or otherwise, that may in any way be related to or disclosed by said drawings, specifications, or other data.

UNLESS OTHERWISE SPECIFIED  
DIMENSIONS ARE METRIC (INCHES) AND TOLERANCES ARE:

|                               |                                 |
|-------------------------------|---------------------------------|
| <0.5mm = $\pm 0.05$ mm        | [<0.020 = $\pm 0.002$ ]         |
| >0.5 - 6mm = $\pm 0.1$ mm     | [>0.020 - 0.236 = $\pm 0.004$ ] |
| >6.00 - 30mm = $\pm 0.2$ mm   | [>0.236 - 1.181 = $\pm 0.008$ ] |
| >30.00 - 120mm = $\pm 0.3$ mm | [>1.181 - 4.725 = $\pm 0.012$ ] |

SEE NOTES

TNC STR BHD JACK IP 67 TO  
AMC RA PLUG  
USING RG 178 CABLE  
VARIOUS LENGTH

|               |             |                |
|---------------|-------------|----------------|
| SIZE<br><br>B | DRAWING NO. | 95-850-284-XXX |
|               | ITEM NO.    | 95-850-284-XXX |
|               | PART NO.    | 95-850-284-XXX |

REV

THIRD ANGLE PROJ.



## REFERENCE

|      |       |
|------|-------|
| EAR# | 10936 |
|------|-------|

-----  
 ANGLES =  $\pm 1^\circ$

ENGR.1  
DINESH A

ENGR.2

|      |           |
|------|-----------|
| DATE | 29-SEP-21 |
|------|-----------|

SHEET NO. 2 OF 2

SCALE: 2.8:1.0

## CUSTOMER OUTLINE DRAWING

ALL OTHER SHEETS ARE FOR INTERNAL USE ONLY

# Amphenol RF

|  |   |
|--|---|
|  | A |
|--|---|