

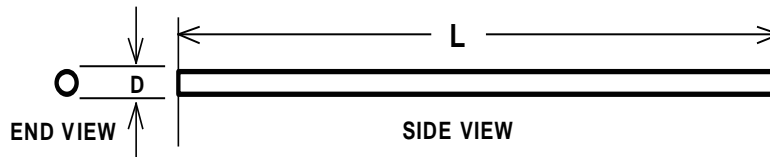
TECHNICAL DATA SHEET

Wood (Dowel) Applicator

Intended Use: Medical - General Hospital

Characteristic		Specification		
Material	Applicator	Paper (White) Birch		
		3-10% Moisture content		
	Inner boxes	Non latex, 22 wt. "Clay Coat" News, with re-closable flip top. (Product supplied in Inner Boxes only)		
	Cases	Non-Latex, B Flute, Corrugated Box		
Description		Wood Shaft (Refer to Appendix for specific attribute)		
Dimension	Length (mm)		Diameter (mm)	Maximum out of round (mm)
	5.82" (147,6 mm)		0.085" (2,16 mm)	0.005" (0,13 mm)

Measurement Diagram



Additional Information

Country of Origin
China

Appendix 1 List of Item Codes and Attributes

Appendix 1 (List of items)

AMD Medicom Inc.

Item Code	Description	Packaging Information	Size	Color	Treatment
55900	AMD-Ritmed Solon Care Wooden Applicators	50 Applicator/Box, 20 Box/Case, 1000 Applicator/Case	6"	Tan with natural yellow or reddish, brown tints	Non-Sterile