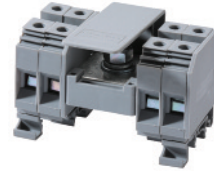
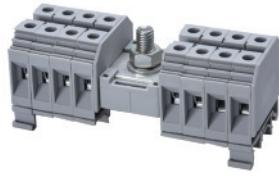
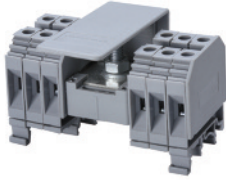


**CDB6/x\***

**CDB10/x\***

**CDB25/x\***



8 mm

10 mm

12 mm

43 x 47 mm

43 x 47 mm

56 x 49 mm

12 mm

12 mm

18 mm

Polyamide 6.6

Polyamide 6.6

Polyamide 6.6

1 Lug/ M6 bolt connection for ring lug  
Screw clamp connection

1 Lug/ M8 bolt connection for ring lug  
Screw clamp connection

1 Lug/ M8 bolt connection for ring lug  
Screw clamp connection

CDB6/x			CDB10/x			CDB25/x		
SP US	IEC	UL US	SP US	IEC	UL US	SP US	IEC	UL US
C	60947-7-1	E220514	C	60947-7-1	E220514	C	60947-7-1	E220514
10-2 AWG 22-8 AWG	6-25 sq.mm 1.5-6 sq.mm	10-2 AWG 22-8 AWG	8-1/0 AWG 22-6 AWG	10-35 sq.mm 1.5-10 sq.mm	8-1/0 AWG 16-6 AWG	6-2/0 AWG 12-2 AWG	10-50 sq.mm 6-25 sq.mm	6-2/0 AWG 12-2 AWG
600 V	800 V	600 V	600 V	800 V	600 V	600 V	800 V	600 V
100 A 50 A	82 A 41 A	100 A 50 A	130 A 65 A	114 A 57 A	130 A 65 A	150 A 75 A	150 A 75 A	150 A 75 A
35 lb-in 14 lb-in	3.0 Nm 0.8 Nm	35 lb-in 14 lb-in	53 lb-in 14 lb-in	6.0 Nm 1.2 Nm	53 lb-in 14 lb-in	53 lb-in 22 lb-in	6.0 Nm 2 Nm	53 lb-in 22 lb-in



Cat. No.	H x W x L (mm)	Outputs	Std. Pk.	Cat. No.	H x W x L (mm)	Outputs	Std. Pk.	Cat. No.	H x W x L (mm)	Outputs	Std. Pk.
<b>CDB6/2</b>	43 x 47 x 64	8	10	<b>CDB10/2</b>	43 x 47 x 72	8	10	<b>CDB25/2</b>	56 x 49 x 88	8	10
<b>CDB6/3</b>	43 x 47 x 80	12	10	<b>CDB10/3</b>	43 x 47 x 92	12	10	<b>CDB25/3</b>	56 x 49 x 112	12	10
<b>CDB6/4</b>	43 x 47 x 96	16	5	<b>CDB10/4</b>	43 x 47 x 112	16	5	<b>CDB25/4</b>	56 x 49 x 136	16	5

Cat. No.	Std. Pk.	Cat. No.	Std. Pk.	Cat. No.	Std. Pk.
	50	CA702	50	CA702	50
CA802	50	CA802	50	CA802	50
MT8	100	MT10	100	MT12	100
SWL6	100				

\* NOTE:  
x signifies how many blocks are on each side of input.