

# Distribution Block

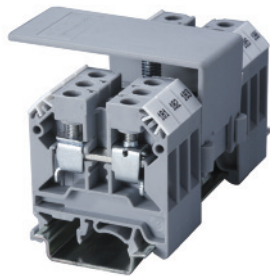
Altech CDB Compact Distribution Blocks are an ideal choice for a simplified distribution system. A lug/bolt secures the incoming cable and the screw clamp design of the block provides the outgoing connections. These provide easy connect points and ensure perfect continuity for distribution. A protective shield effectively shrouds the incoming connection.

### Application Information:

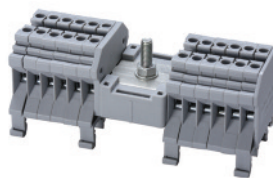
Sum of outgoing currents on either side of center should not exceed half the maximum permissible incoming current.

Sum of total outgoing currents should not exceed maximum permissible incoming current.

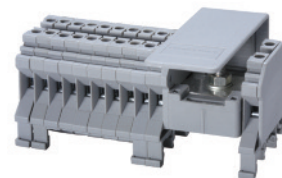
Connection for higher outgoing currents should be done through the terminal nearest to the incoming connection.



CDB4/x\*



CDB4/x(1)\*\*



|                     |                        |                                        |             |               |           |                                        |           |
|---------------------|------------------------|----------------------------------------|-------------|---------------|-----------|----------------------------------------|-----------|
| Terminal Width      | 6 mm                   |                                        |             | 6 mm          |           |                                        |           |
| Height & Width      | 45 x 43 mm             |                                        |             | 45 x 43 mm    |           |                                        |           |
| Stripping Length    | 8 mm                   |                                        |             | 8 mm          |           |                                        |           |
| Insulation Material | Polyamide 6.6          |                                        |             | Polyamide 6.6 |           |                                        |           |
| Type of Connection  | Input                  | 1 Lug/ M5 bolt connection for ring lug |             |               | Output    | 1 Lug M5 /bolt connection for ring lug |           |
|                     | Output                 | Screw clamp connection                 |             |               | Output    | Screw clamp connection                 |           |
| Approvals           |                        |                                        |             |               |           |                                        |           |
| Wire Range          | Input                  | 10-8 AWG                               | 6-16 sq.mm  | 10-8 AWG      | 10-8 AWG  | 6-16 sq.mm                             | 10-8 AWG  |
|                     | Output                 | 22-12 AWG                              | 0.2-4 sq.mm | 22-10 AWG     | 22-12 AWG | 0.5-4 sq.mm                            | 22-10 AWG |
| Voltage Rating      | 600 V                  |                                        | 800 V       | 600 V         |           | 800 V                                  | 600 V     |
| Current Rating      | Input                  | 50 A                                   | 64 A        | 50 A          | 50 A      | 64 A                                   | 50 A      |
|                     | Max. Individual Output | 25 A                                   | 32 A        | 35 A          | 25 A      | 64 A                                   | 35 A      |
| Torque              | Input                  | 26 lb-in                               | 2.0 Nm      | 26 lb-in      | 26 lb-in  | 2.0 Nm                                 | 26 lb-in  |
|                     | Output                 | 7 lb-in                                | 0.5 Nm      | 7 lb-in       | 7 lb-in   | 0.5 Nm                                 | 7 lb-in   |

Other Approvals



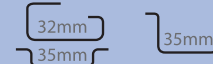
### Terminal Block

| Cat. No. | H x W x L (mm) | Outputs | Std. Pk. | Cat. No.   | H x W x L (mm) | Outputs | Std. Pk. |
|----------|----------------|---------|----------|------------|----------------|---------|----------|
| CDB4/1   | 45 x 43 x 44   | 4       | 10       | CDB4/2(1)  | 45 x 43 x 52   | 6       | 10       |
| CDB4/2   | 45 x 43 x 56   | 8       | 10       | CDB4/3(1)  | 45 x 43 x 58   | 8       | 10       |
| CDB4/3   | 45 x 43 x 68   | 12      | 10       | CDB4/4(1)  | 45 x 43 x 64   | 10      | 10       |
| CDB4/4   | 45 x 43 x 80   | 16      | 10       | CDB4/5(1)  | 45 x 43 x 70   | 12      | 10       |
| CDB4/5   | 45 x 43 x 96   | 20      | 10       | CDB4/6(1)  | 45 x 43 x 76   | 14      | 10       |
| CDB4/6   | 45 x 43 x 108  | 24      | 10       | CDB4/10(1) | 45 x 43 x 100  | 22      | 10       |
|          |                |         |          | CDB4/11(1) | 45 x 43 x 106  | 24      | 10       |

Cat. No. Std. Pk.

Cat. No. Std. Pk.

DIN Rail  
for ordering information  
refer to pages 90-91



End Stop  
for ordering information  
refer to page 92



CA702 50  
CA802 50

CA702 50  
CA802 50

Marking Tags



MT6 100

MT6 100

Warning Label

**COLOR BLOCKS**  
(other than standard grey)

**When ordering please add color suffix to Cat. No.**

Example for color Red: **Cat.No./R**

|                                  |                        |  |
|----------------------------------|------------------------|--|
| <b>Color</b>                     | <b>Ordering Suffix</b> |  |
| Red                              | R                      |  |
| Yellow                           | Y                      |  |
| Blue                             | BU                     |  |
| Green                            | G                      |  |
| Consult Altech for availability: |                        |  |
| Orange                           | O                      |  |
| Beige                            | BG                     |  |
| Dark Brown                       | DB                     |  |
| Black                            | BL                     |  |
| White                            | W                      |  |

\* NOTE:  
x signifies how many blocks are on each side of input.

\*\* NOTE:  
x signifies number of blocks on left side of input. 1 block is on right side.