

# INSPECTION SOLUTIONS FOR ELECTRONICS MANUFACTURE

## SEE WHAT YOU'RE MISSING

Vision Engineering's inspection microscopes are used around the world in electronics manufacturing – where high image quality and magnification is required. With more than 65 years of industry experience, we understand the challenges you face when it comes to quality control and offer solutions for your specific applications to improve quality in your manufacturing process.



### INSPECTION SYSTEMS

Mantis  
Lynx EVO  
EVO CAM II  
SX Range  
DRV-Z1  
Bench Magnifiers



# MANTIS — COMFORT | PERFORMANCE | QUALITY —

Mantis is an award-winning ergonomic stereo microscope that offers exceptional operator comfort and superb 3D imaging. No awkward eyepieces means a stress-free viewing experience, see more and do more than is possible with conventional binocular microscopes.

Mantis optical stereo microscope delivers an unrivalled high quality 3D image, rich in detail and contrast, perfect for 3D observations and manipulation of a wide range of subjects.

## Excellent image quality

- Custom Optics: To ensure the highest image quality for the user. Each lens is tailored to the Mantis system, combining finest optical quality glass and special coatings to give a high resolution, high contrast view.
- Dynamic View Optics: Mantis's large, clear image enables the operator to have a range of head movement while viewing the subject, giving them the opportunity to look 'around' the subject rather than just straight down on it.
- High performance Digital Imaging: Use Mantis PIXO's high quality camera to share your image to a screen. capture, and review and share high quality images, including annotations.

## Performance enhancing tools

- Unique large high quality optical stereo image
- Ergonomic design for user comfort and productivity
- 5 different ways to illuminate your subject
- Suitable for a wide range of applications
- Mantis PIXO – Digital imaging for collaboration, traceability and training



Mantis is THE stereo microscope brand trusted by thousands of customers globally to deliver excellent high quality images for a wide range of magnification applications, in an easy to use ergonomic system.



MORE  
INFORMATION

*Vision*  
ENGINEERING

	PIXO				ERGO				IOTA			
Optical												
Compatible Objective Lens	3x	4x	6x	8x	10x	15x	6x SLWD	8x SLWD	3x	4x	6x	8x
Max. Working distance (inches/mm)	3.93/100	3.93/100	2.67/68	2.36/60	2.12/54	1.57/40	4.48/114	4.44/113	4.09/104	4.25/108	2.91/74	2.40/61
Measured Max FoV (inches/mm)	1.73/44.1	1.40/35.7	0.95/24.2	0.70/18.0	0.55/14.2	0.35/9.1	0.88/22.5	0.70/17.9	1.45/37.0	1.14/29.0	0.79/20.1	0.59/15.0
Pupil Diameter (inches/mm)	0.92/23.5	0.93/23.6	0.88/22.4	0.76/19.4	0.67/17.0	0.84/12.3	0.67/17.0	0.56/14.4	0.90/22.8	0.93/23.6	0.87/22.0	0.71/18.0
White / UV version												
– Brightness	White: 11k lux				UV: 0.47 k lux 53 uW/cm² Max				–			
– Peak wave length					385nm				–			
– Control					25 steps				–			
Camera (PIXO only)												
Camera resolution (MP)	5.04 MP				–				–			
Best capture resolution (pixels)	2592 x 1944				–				–			
Frame refresh rate	48 frames per second				–				–			
Color depth	12-bit				–				–			
Interface	Super speed USB 3.0				–				–			
Output connection	USB-C to PC				–				–			
Supplied software	ViCapture											
Image capture formats	PNG, BMP, JPG				–				–			
Saved image sizes (MB)	PNG – 19Mb BMP – 19Mb JPG – 400Kb				–				–			

## STAND OPTIONS



VERSO Arm



VERSO Arm with extension



STABILA Stand



5MP image  
quality  
(PIXO only)



Long working  
distance



Ergonomic  
position



3D view



Overlay & Image  
comparison  
(PIXO only)



Import,  
export settings  
(PIXO only)



Glasses free



3D  
illumination

## SYSTEM COMPARISON GUIDE



PIXO	ERGO	IOTA
high quality optical stereo image		
ergonomic working position		
long working distance		
3x - 15x		3x - 8x
dynamic 3D lighting		synchronized LED Lighting
white/UV lighting option		
3 lens multi-view turret		interchangeable lenses
integrated HD camera		
video and image capture		
custom overlays and on-screen annotation		

**Vision**  
ENGINEERING

+1 (860) 355 3776  
+1 (800) 644 7264 (Toll free)



MORE  
INFORMATION



# LYNX EVO

# POWERFUL | EFFICIENT | FLEXIBLE

The Lynx EVO eyepiece-less zoom stereo microscope is designed to increase productivity through superior ergonomics. It delivers superb 3D depth perception and bright, high resolution, and high contrast images for you work comfortably with greater concentration and accuracy.

Providing enhanced hand to eye coordination, more working space for tools and better peripheral vision for easy interaction with your working environment, Lynx EVO transforms the way you work.

## Performance enhancing tools

- Superior ergonomics promotes greater productivity and efficiency.
- 10:1 zoom ratio provides 6x - 60x magnification, increasing to 240x with optional accessories.
- Long working distance for easy sample manipulation.
- A natural view of the subject with easy hand-eye co-ordination.
- Iris control within the zoom unit for greater control over the depth of field and contrast.
- Integrated HD camera/software (option) provides seamless image/video capture and annotation capabilities.

## Features for viewing quality

- Lynx EVO incorporates Dynascope® patented optical technology. Dynascope technology optimizes head and body freedom providing 10mm side-to-side and 70mm front-to-back head freedom.
- Detect defects - with super clear stereo viewing
- Improve re-work and repair tasks with natural hand-eye co-ordination due to unobstructed peripheral vision.
- Ability to wear glasses

Businesses choose Lynx EVO because they know their operators are more efficient, more accurate and more productive. The operator benefits and so does the business.



MORE  
INFORMATION

**Vision**  
ENGINEERING



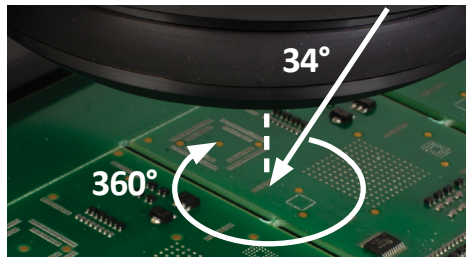
## STAND OPTIONS



## ACCESSORIES

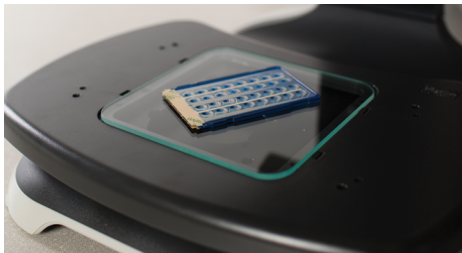
### 360° rotating viewer

The 360° rotation provides enhanced observation for many applications, including electronics, mechanical, medical and plastics components.



### Floating stage

A floating stage accessory for the ERGO stand provides smooth and precise control, ideal for inspecting sensitive samples, checking uniformity of components, or together with the measuring graticule for scaling or measuring subjects.

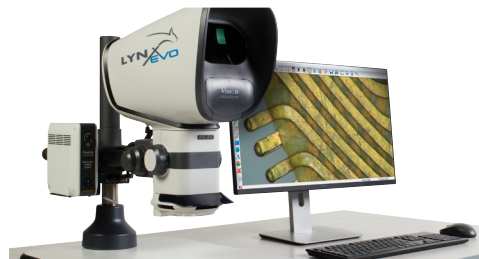


### Multiplier

Increases the magnification and zoom range by a factor of 1.5x or 2.0x, significantly extending system magnification capabilities without changing the working distance. Available as 1.5x, or 2.0x multipliers, a slide lever simply engages/disengages the multiplier, as required.

### Smart Cam 50 digital camera

Integrated HD camera/software (option) provides seamless image/video capture while retaining both optical paths for stereo viewing. Easy convenient image/video capture.



### Fixed wedges

Available in two configurations; 25° tilting up and 25° tilting down. Wedges enable the adjustment of the eye-point providing better ergonomics, and gives the option to use tools via a long working distance objective while working with an oblique view.



Optical data				
Objective lens	Zoom range	Working distance	Field of view at min. zoom	Field of view at max. zoom
0.45x	2.7x – 27x	7" (176mm)	2.2" (55mm)	0.3" (5.5mm)
0.62x	3.7x – 37x	5" (128mm)	1.6" (40mm)	0.16" (4.0mm)
1.0x	6x – 60x	3" (75mm)	1" (25mm)	0.1" (2.5mm)
1.5x	9x – 90x	1.6" (42mm)	0.7" (16mm)	0.06" (1.6mm)
2.0x	12x – 120x	1.2" (29mm)	0.5" (12mm)	0.05" (1.2mm)

360° rotating view				
Zoom range	Working distance	Field of view at min. zoom	Field of view at max. zoom	Viewing angle
4.2x (16x*) – 42x	1.4" (35.5mm)	0.40" (10.2mm)*	0.15" (3.8mm)	34° from vertical

Direct view				
Zoom range	Working distance	Field of view at min. zoom	Field of view at max. zoom	Viewing angle
6.8x (15x*) – 68x	2.22" (56.5mm)	0.47" (12.0mm)*	0.098" (2.5mm)	-

\* Uninterrupted

Smart Cam 50 specifications	
	Smart Cam 50
Sensor type	CMOS
Resolution (W x H)	2592 x 1944 pixels
Sensor size	1/2"
Pixel size	2.2µm
Color depth	12-bit
Refresh rate (fps)	15.2 fps max.
File formats	BMP, JPEG, PNG and AVI

**Vision**  
ENGINEERING

+1 (860) 355 3776  
+1 (800) 644 7264 (Toll free)



MORE  
INFORMATION

Excellent optical performance makes EVO Cam II a powerful imaging solution, with a range of options to ensure exceptional clarity for any application. Intuitive design simplifies operation and minimizes training requirements, making EVO Cam II a powerful and flexible tool, ideal for multiple applications in a variety of environments.

EVO Cam II – powerful, flexible and easy to use –  
all the tools you need to simply and quickly achieve your inspection goals.

#### Excellent image quality

- EVO Cam II's wide range of precision objectives and wide-field lenses give you the flexibility to customize your magnification requirements.
- Zero video latency allows for real-time viewing without video delay.
- Two focus and exposure modes (auto and manual) lets you control how to view the details.
- The camera control panel gives you the power to enhance the image by adjusting brightness levels, white balance, illumination, noise reduction, and exposure.
- Focus stacking enables you to capture a single, in-focus image even when the subject extends beyond the depth of focus achievable in a single exposure.

#### Performance enhancing tools

- With a 30:1 zoom ratio, you can achieve magnifications ranging from 10x to 300x using just one objective lens.
- Instantly compare the difference between recorded samples and the sample being inspected.
- Store your frequently used camera settings and calibrations by creating up to ten presets and 3 hot keys for easy access.
- A 360° rotating viewer adds an extra dimension to standard 2D imaging with direct and rotating oblique views of your subject.
- Use overlays for instruction, comparison, or measurement by placing a partially transparent image over the top of the sample view.
- No PC is required. Easily capture and share images directly to a USB memory stick, direct or wirelessly to a PC.
- Perform simple measurements with EVO CAM II's digital caliper or scaled grid.

Exceptional image quality is delivered in full HD resolution with excellent clarity without latency.



MORE  
INFORMATION



Objective lens	Magnification zoom range*	Working distance	Field of view at min.zoom	Field of view at max.zoom
Precision objective lenses				
0.45x	2.3x - 68x	6.30" (160 mm)	9.48" X 5.27" (241 mm x 134 mm)	0.31" X 0.17" (7.8 mm x 4.2 mm)
0.62x	3.1x - 93.7x	4.17" (106 mm)	6.81" x 3.78" (173 mm x 96 mm)	0.22" x 0.12" (5.5 mm x 3.1 mm)
1.0x	5x - 151.2x	3.35" (82 mm)	3.46" x 2.24" (88 mm x 57 mm)	0.14" x 0.08" (3.5 mm x 2 mm)
1.5x	7.6x - 226.8x	1.69" (43 mm)	1.77" x 1.41" (45 mm x 36 mm)	0.09" X 0.05" (2.3 mm x 1.2 mm)
2.0x	10x - 302.4x	1.14" (29 mm)	1.45" x 1.06" (37 mm x 27 mm)	0.06" x 0.04" (1.5 mm x 1.0 mm)
Wide-field objective lenses				
2 diopter	0.8x - 24x	19.69" (500 mm)	25.98" x 14.56" (660 mm x 370 mm)	0.84" x 0.47" (21.5 mm x 12.0 mm)
3 diopter	1.15x - 32.6x	12.99" (330 mm)	15.35" x 8.85" (390 mm x 225 mm)	0.57" x 0.33" (14.7 mm x 8.4 mm)
4 diopter	1.71x - 51.41x	9.65" (245 mm)	11.53" x 6.73" (293 mm x 171 mm)	0.39" x 0.22" (10 mm x 5.5 mm)
5 diopter	2.12x - 65.5x	7.76" (197 mm)	9.13" x 5.31" (232 mm x 135 mm)	0.31" X 0.18" (8 mm x 4.5 mm)
Micro objective lenses				
5x	250x - 378x	0.83" (21 mm)	0.08" x 0.05" (2.2 mm x 1.3 mm)	0.05" x 0.03" (1.4 mm x 0.8 mm)
10x	500x - 756x	0.83" (21 mm)	0.04" x 0.02" (1.1 mm x 0.65 mm)	0.02" x 0.01" (0.7 mm x 0.4 mm)

\*Using a 24 inch screen

## With 360° Optical Viewer

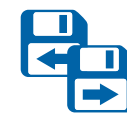
Setting	Zoom ratio	Zoom range	Working distance	Field of view at min. zoom	Field of view at max. zoom	Viewing angle
360° rotating view	5.3:1	19x - 105x	1.39" (35.5 mm)	1.01" x 0.87" (25.7 mm x 22.1 mm)	0.10" x 0.08" (2.6 mm x 2.2 mm)	34° from vertical
Direct view	5.3:1	28x - 151x	2.22" (56.5 mm)	0.77" x 0.44" (19.7 mm x 11.2 mm)	0.06" x 0.03" (1.6 mm x 0.9 mm)	-

**30x zoom**

**HD**



**10 presets**



Large zoom range

Outstanding image quality

Focus stacking

Overlay & image comparison

On-board measurement

WiFi image transfer

Quick access settings

Calibration tracking with zoom

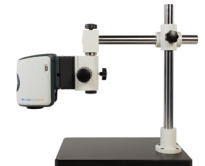
Import, export settings

360° Rotating View Option

## STAND OPTIONS



Multi-axis



Single-arm boom



Ergo



Bench



Double-arm boom



Articulated arm

## ILLUMINATION OPTIONS

Illumination – get the right light for the right task

Better control of your lighting gives better control of your results.

- Episcopic (EPI) illuminator
- Substage illumination
- Ultra Violet ring-light
- Light Filters

**Vision**  
ENGINEERING

+1 (860) 355 3776  
+1 (800) 644 7264 (Toll free)



MORE  
INFORMATION

# SX RANGE — ROBUST | EASY | AFFORDABLE

Inspection of small details in finished items or supplied components is made easier and more efficient at the right magnification. Whether looking for moulding defects, surface finish, machining residue, correct assembly or much more, quality assurance is enhanced, reducing cost and increasing quality.

Robust, high quality microscopes for every application.

## Features for viewing quality

- Easy to use zoom control stereo microscope gives users greater visual data with flexibility of operation.
- Click stop magnification points allow users to recall magnifications quickly, easily and repeatably.
- SX Elite systems provide the necessary depth perception allowing easier working, increasing efficiency and reducing errors.
- Different subjects require different illumination. SX Elite systems offer direct, oblique, quadrant, ultra violet and sub-stage illumination for optimal lighting for each subject type.
- Optional camera allows users to view, capture and annotate images easily and quickly for training, archiving, communicating with colleagues, suppliers and customers.

## Performance enhancing tools

- Maximum zoom magnification range of 4x - 200x.
- Long working distance up to 220mm for easy sample manipulation, rework and assembly.
- Customizable illumination and stand options.
- Robust, high quality microscope at an affordable price design to fast return on your investment.
- Camera option comes complete with ViCapture, Vision Engineering's intuitive imaging software. SX Elite's camera is also compatible with Vision Engineering's entire suite of inspection software.

Nature has designed our visual system to be so dominant that our bodies adapt to accommodate any deficiency in the way we see. By enhancing the visual sense we extend the body's capability.



MORE  
INFORMATION

**Vision**  
ENGINEERING



# SX RANGE

# TECHNICAL INFORMATION



**SX25 Elite**



**SX45 Elite**



**SX45-TR Elite**

## OPTICAL DATA

<b>Standard magnification range</b>	x10 - x45	x8 - x50	x8 - x50
<b>Minimum / Maximum capable magnification</b>	x5 - x180	x4 - x200	x4 - x200
<b>Zoom ratio</b>	4.5:1	6.3:1	6.3:1
<b>Working distance (standard)</b>	97mm	115mm	115mm
<b>Working distance (maximum)</b>	180mm	220mm	220mm
<b>Optical principle</b>	Greenough	Greenough	Greenough

## FEATURE DATA

<b>Binocular eyepieces</b>	✓	✓	✓
<b>Trinocular camera port</b>	-	-	✓
<b>Eyepiece options</b>	10x, 15x, 20x	10x, 15x, 20x	10x, 15x, 20x
<b>Additional objective</b>	0.5x, 0.75x, 2.0x	0.5x, 0.7x, 2.0x	0.5x, 0.7x, 2.0x

## ACCESSORY OPTIONS

<b>Image capture</b>	-	-	✓
<b>Imaging software</b>	-	-	✓
<b>Floating stage</b>	-	✓	✓
<b>Measurement comparison graticule</b>	✓	✓	✓
<b>Standard ring-light</b>	✓	✓	✓
<b>Quadrant ring-light</b>	✓	✓	✓



Stand options	SX25 Elite bench stand	SX45 Elite bench stand	Single arm boom with base	Double arm boom with base	Articulated arm boom with clamp	Double arm boom with clamp
SX25 Elite	✓	✓	✓	✓	✓	✓
SX45 Elite	-	✓	✓	✓	✓	✓
Sub stage illuminator	✓	✓	-	-	-	-
Incident illuminator	✓	✓	-	-	-	-
Height adjust	✓	✓	✓	✓	✓	✓
X/Y adjust	-	-	✓	✓	✓	✓
Floating stage compatible	-	✓	-	-	-	-
Ring light compatible	✓	✓	✓	✓	✓	✓

## SX25 Elite optical configurations

Eyepieces	Objective Lens	Zoom Range	Working Distance
x10/20 E.W.	x0.5	x5 - x22.5	180mm
x10/20 E.W.	x0.75	x7.5 - x33.8	120mm
x10/20 E.W.	N/A	x10 - x45	97mm
x10/20 E.W.	x2.0	x20 - x90	30mm
x15/16 W.F.	x0.5	x7.5 - x33.6	180mm
x15/16 W.F.	x0.75	x11.3 - x50.6	120mm
x15/16 W.F.	N/A	x15 - x67.5	97mm
x15/16 W.F.	x2.0	x30 - x135	30mm
x20/11 W.F.	x0.5	x10 - x45	180mm
x20/11 W.F.	x0.75	x15 - x67.5	120mm
x20/11 W.F.	N/A	x20 - x90	97mm
x20/11 W.F.	x2.0	x40 - x180	30mm

## SX45 Elite optical configurations

Eyepieces	Objective Lens	Zoom Range	Working Distance
x10/22 F.N.	x0.5*	x4 - x25	220.6mm
x10/22 F.N.	N/A	x8 - x50	115.0mm
x10/22 F.N.	x2.0	x16 - x100	57.5mm
x15/16 F.N.	x0.5*	x6 - x37.5	220.6mm
x15/16 F.N.	N/A	x12 - x75	115.0mm
x15/16 F.N.	x2.0	x24 - x150	57.5mm
x20/13 F.N.	x0.5*	x8 - x50	220.6mm
x20/13 F.N.	N/A	x16 - x100	115.0mm
x20/13 F.N.	x2.0	x32 - x200	57.5mm

\*Stand extension required when using x0.5 objective lens with bench stand model to accommodate increased working distance

**Vision**  
ENGINEERING

+1 (860) 355 3776  
+1 (800) 644 7264 (Toll free)



MORE  
INFORMATION

# DRV-Z1

## 3D VIEW | CAPTURE | SHARE

The incredible DRV-Z1 (Deep Reality Viewer) is the world's first and only digital stereo inspection system which creates full 3D HD images that appear to float in front of your eyes. You don't need any special glasses or goggles. Just sit back and view high definition 3D images, with outstanding depth perception.

Specifically designed for inspection and manufacturing applications, DRV-Z1 is a digital stereo 3D viewer with zoom that brings together the benefits of optical stereo microscopy and digital technology into a single unique system.

### Performance enhancing features

- Long working distance and wide zoom magnification suits a broad range of industrial applications where reworking is necessary.
- Excellent depth perception supports precise hand-to-eye co-ordination and the use of tools, improving productivity and work flows.
- Ergonomic design enables good posture and reduced fatigue, as the user sits upright, and genuine 3D detail is accessible for all users.
- With minimal setup and ease of use, very little training is required, and full user benefits are achieved quickly.
- Images can be shared across networks to other DRV systems in real time, for simultaneous 3D remote viewing.

DRV-Z1's advanced connectivity allows users and observers to collaborate more effectively, and in real time. This supports clear and efficient communication throughout the supply network.



MORE  
INFORMATION

**Vision**  
ENGINEERING



## DISPLAY HEAD

<b>Resolution</b>	1920 x 1080 per channel
<b>Image Size on concave mirror</b>	400mm x 225mm /15.7" x 8.9" in 16:9 aspect ratio
<b>Digital Zoom</b>	2x
<b>Working distance (maximum)</b>	182mm / 7.2"

## INPUTS

<b>Power Supply</b>	100 - 240vac 50 / 60Hz
<b>Headphone Jack</b>	3.5mm

## OUTPUTS

<b>Image Capture</b>	USB2
<b>Video Capture</b>	HDMI cable to an external video capture card
<b>Connection to external mono monitor</b>	HDMI 1920 x 1080
<b>Connection to second or multiple DRV-Z1s</b>	HDMI daisy chain / wifi connection

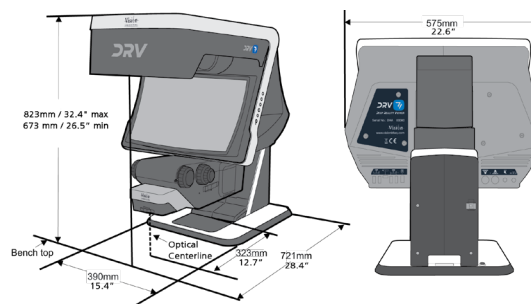
## STAND

<b>Counterbalanced stand with 150mm/ 5.9" vertical travel</b>	
<b>Fully adjustable sub-stage illumination</b>	Optional

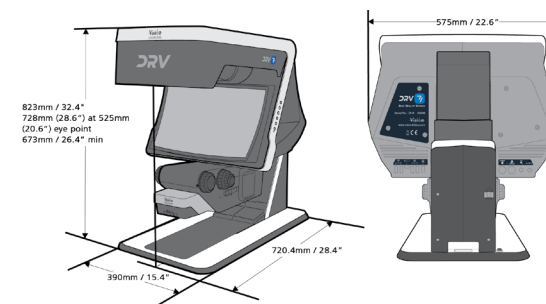
## ZOOM MODULE

Module with 10:1 optical zoom and fully adjustable surface illumination

## DRV-Z1 Short base



## DRV-Z1 Long base\*



\*sub-stage illumination is available as an option on the long base

## WEIGHT

**Maximum System Weight** 45kg / 99.2lb

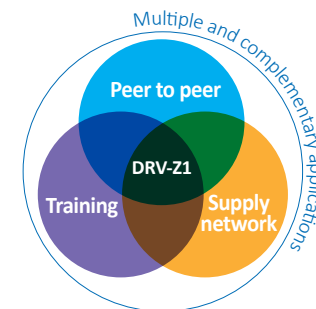
## New levels of collaboration

Components, parts and products can be viewed in real-time between company departments, customers, manufacturers, designers and suppliers across organisational or even international networks.

DRV-Z1 enables faster and more accurate reporting, collaboration, consulting and supply approvals, contributing to faster, more informed decision making.

This new level of collaboration removes geographical barriers, enables innovative ways of working, and improves the efficiency and effectiveness of essential operational processes such as rapid prototyping and quality control.

Connectivity options include wired, closed organization networks, or Wi-Fi. DRV-Z1 also accepts multiple inputs to support wide-ranging applications, including microscopes, cameras, CAD and MRI/CT scans, as well as immersive animations and architectural walk-throughs.



## DRV-Z1 optical data

Objective Lens	Zoom Range	Working Distance	Field of View at MAX. zoom	Field of View at MIN. zoom
0.33x	6.1x - 61x	182mm / 7.2"	6.5/3.7mm (0.3/0.1")	65.5/36.8mm (2.3/1.4")
0.4x	7.4x - 74x	138mm / 5.4"	5.4/3.0mm (0.2/0.1")	54.0/30.4mm (2.1/1.2")
0.5x	9.3x - 93x	93mm / 3.7"	4.3/2.4mm (0.2/0.1")	43.2/24.3mm (1.7/1")

**Vision**  
ENGINEERING

+1 (860) 355 3776  
+1 (800) 644 7264 (Toll free)



MORE  
INFORMATION

# VISION LUXO

## QUALITY OPTICS | LED TECHNOLOGY

Our range of Vision LUXO bench magnifiers are widely regarded as the best in their class: the world's premier lighted magnification system. With perfect balance, brilliant images and optical excellence, you can see every detail with astonishing clarity. Colors are bright and accurate, and we have models with ultraviolet (UV) illumination and with electrostatic dissipative (ESD) capabilities in a range to cover every application.

Our magnifiers are designed to maximize horizontal and vertical movement. They provide significant horizontal reach and will always stay in the right position without drifting. The arms are balanced by spring systems which ensure smooth and easy positioning.

### Performance enhancing features

- ✓ Designed for industrial applications using renowned Luxo arm technology
- ✓ Large, high quality optics, for comfortable and effective viewing
- ✓ Powerful, controllable light output using the latest LED technology
- ✓ ESD & UV variants available for specialist industry requirements
- ✓ 5 year warranty
- ✓ Made in Norway

Customize your bench magnifier to your application by choosing from a variety of different magnifications. Primary lens magnifications range from 3 diopter (1.88x) to 5 diopter (2.25x). Secondary lenses are available for all models in 4 (2x), 6 (2.5x), or 10 (3.5x) diopter.



### **BenchKam - Camera accessory for Circus and Wave bench magnifiers**

Designed for customers who need to capture and share images while working with bench magnifiers, BenchKam helps meet the increasing need for documentation and reporting.



MORE  
INFORMATION





# VISION LUXO

# TECHNICAL INFORMATION



**WAVE LED ■ Wave LED ESD**

**Wave LED UV ■ Wave LED ESD UV**

Industrial rectangular lens LED bench magnifier



**Circus LED**

Large diameter round bench magnifier



**KFM LED ■ KFM LED ESD**

Multi-purpose industrial bench magnifier



**LFM LED G2**

Lightweight illuminated bench magnifier

Model	Light Source	Body Material & Color	Mounting	Optics	Arm Technology & Movement	Timer & Dimming
<b>Wave LED</b> <b>Wave LED ESD</b> <b>Wave LED UV</b> <b>Wave LED ESD UV</b>	2 x 6W dimmable LED modules. Brightness 4600 lux at 11" (279mm) focal length. 4000°K correlated color temperature (CCT). 80 color rendition index (CRI).	Steel arm, aluminum head in light grey. Wave ESD-Safe steel arm and die-cast aluminum shade, black only.	Edge clamp as standard. Weighted base and other clamps and mounts available.	3.5 (1.88x) or 5 (2.25x) diopter, 6.7" x 4.4" rectangular crown glass lens. (171mm x 114mm)	Heavy duty internal spring 45" or 30" (1143mm or 762mm) parallel, three-pivot K-arm.	Step dimming 0-50-100%. Selectable left / right illumination. Auto shut-off function.
<b>Circus LED</b>	10W total energy consumption. Brightness 3830 lux at 11" (279mm) focal length. 4000°K correlated color temperature (CCT). 90 color rendition index (CRI).	Steel arm with aluminum head. Fully enclosed neck design. White with black accents.	Edge clamp as standard.	3.5 (1.88x) or 5 (2.25x) diopter, 6.5" (165mm) diameter crown glass lens.	Heavy duty internal spring 45" (1143mm) parallel, three-pivot arm with 0.75" (19mm) diameter of steel tubing.	Dimming 10-100%. Auto shut-off function.
<b>KFM LED</b> <b>KFM LED ESD</b>	2 x semi-circular 9W LED modules. Brightness 3000 lux at 13" (330mm) focal length. 4000°K correlated color temperature (CCT). 80 color rendition index (CRI).	KFM LED steel arm, aluminum head in light grey. KFM ESD-Safe steel arm and die-cast aluminum shade, black only..	Edge clamp as standard. Weighted base and other clamps and mounts available.	3 (1.75x) or 5 (2.25x) diopter, 5" (127mm) crown glass lens.	Heavy duty internal spring 45" or 30" (1143mm or 762mm) parallel, three-pivot K-arm.	LED light modules are dimmable 1-100%. Auto shut-off function.
<b>LFM LED G2</b>	9W dimmable LED modules. 1750 lux at focal length 13". 4000°K correlated color temperature (CCT). 80 color rendition index (CRI).	Die-cast aluminum housing in light grey.	Edge clamp as standard. Other mounts available.	Optics: 3 (1.75x) or 5 (2.25x) diopter, 5" (127mm) diameter lens.	Internal-spring 30" or 45" parallel, 3 pivot K-arm.	Step dimming 0-50-100%. 9/4 hour shut-off function.

NOTE: Secondary lenses are available for all models: 4, 6 or 10 diopter STAYS lens can be attached to the primary lens. Weighted base is available for 30" arm models only.



Every model is backed with a 5 year warranty.  
Should something go wrong we will send you a brand new model.



+1 (860) 355 3776  
+1 (800) 644 7264 (Toll free)



MORE  
INFORMATION

# VISION ENGINEERING + OUR DIFFERENCE

Vision Engineering Ltd. has been designing and manufacturing high quality ergonomic microscopes, digital instruments, inspection and measuring systems for over 60 years.

## Innovation

With a philosophy of design innovation, Vision Engineering holds world patents for a number of optical / digital techniques, significantly improving viewing ergonomics and enabling customer quality and productivity improvements.

## Quality

Vision Engineering prides itself on quality products, electronics, mechanics and optics and is certified for the quality management system ISO 9001:2015. Quality is as important to us as our customers. Our systems have proved themselves many times over and are chosen by the world's best companies.

## Global

Vision Engineering has manufacturing and design facilities in the UK and USA, plus sales and support offices throughout Europe, the Far East, Asia and the Americas. We support our customers with close technical and service support anywhere in the world.

### Inspection Systems & Measurement Systems

Stereo Microscopes - Digital Microscopes  
Bench Magnifiers - Optical & Video Measurement Systems  
Portable Magnifiers - Service & Calibration  
Contract Manufacturing

**Disclaimer**- Vision Engineering Ltd. has a policy of continuous development and reserves the right to change or update, without notice, the design, materials or specification of any products, the information contained within this brochure/datasheet and to discontinue production or distribution of any of the products described.

General Brochure 1\_22\_V1

#### Vision Engineering Ltd. (UK Manufacturing & Commercial)

The Freeman Building, Galileo  
Drive, Send, Surrey, GU23 7ER, UK  
T +44 (0) 1483 248300  
E [generalinfo@visioneng.com](mailto:generalinfo@visioneng.com)

#### Vision Engineering Ltd. (Italia)

Via G. Paisiello 106  
20092 Cinisello Balsamo MI, Italia  
T +39 02 6129 3518  
E [info@visioneng.it](mailto:info@visioneng.it)

#### Vision Engineering (South East Asia)

P-03A-20, Impian Meridian,  
Jalan Subang 1, USJ 1,  
47600 Subang Jaya,  
Selangor Darul Ehsan, Malaysia  
T +604-619 2622  
E [info@visioneng.asia](mailto:info@visioneng.asia)

#### Vision Engineering (Mexico)

T +01 800 099 5325  
E [infomx@visioneng.com](mailto:infomx@visioneng.com)

#### Vision Engineering (Mexico)

Centro Coyo Innovación y  
Servicios 50 mts Sur de Riteve  
Coyoil, Alajuela  
T +01 800 099 5325  
E [infomx@visioneng.com](mailto:infomx@visioneng.com)

#### Vision Engineering Inc. (NA Manufacturing & Commercial)

570 Danbury Road,  
New Milford, CT 06776, USA  
T +1 (860) 355 3776  
E [info@visioneng.com](mailto:info@visioneng.com)

#### Vision Engineering Ltd. (France)

ZAC de la Tremblaie,  
Av. de la Tremblaie  
91220 Le Plessis Paté, France  
T +33 (0) 160 76 60 00  
E [info@visioneng.fr](mailto:info@visioneng.fr)

#### Vision Engineering (China)

Room 904B, Building B, No.970,  
Nanning Road, Xuhui Vanke  
Center Shanghai, 200235,  
P.R. China  
T +86 (0) 21 5036 7556  
E [info@visioneng.com.cn](mailto:info@visioneng.com.cn)

#### Vision Engineering (Brazil)

E [info@visioneng.com.br](mailto:info@visioneng.com.br)

#### Vision Engineering (Latin America)

E [infomx@visioneng.com](mailto:infomx@visioneng.com)

#### Vision Engineering Ltd. (Central Europe)

Anton-Pendele-Str. 3,  
82275 Emmering, Deutschland  
T +49 (0) 8141 40167-0  
E [info@visioneng.de](mailto:info@visioneng.de)

#### Nippon Vision Engineering (Japan)

272-2 Saedo-cho, Tsuduki-ku,  
Yokohama-shi, Kanagawa  
224-0054, Japan  
T +81 (45) 935 1117  
E [info@visioneng.jp](mailto:info@visioneng.jp)

#### Vision Engineering (India)

T + 91 (0) 80-5555-33-60  
E [info@visioneng.co.in](mailto:info@visioneng.co.in)



Vision Engineering Ltd.  
has been certified for the  
quality management system  
ISO 9001:2015.

**[www.visioneng.us](http://www.visioneng.us)**  
**[info@visioneng.com](mailto:info@visioneng.com)**  
**1.800.644.7264**

