



← Quick assembly video



ATTENTION NOTES:

Treston Inc. takes great care in the packaging of its products; however, damage can occur during shipment. Check all packages and parts for any signs of damage. If damage is evident STOP and contact the carrier that delivered your order. Request a freight claim inspector to document the damage and begin the freight claim process.

Tools required to assemble your Cornerstone Bench are:

- 7/16" wrench or socket with ratchet
- 1/2" wrench or socket with ratchet
- 3/4" wrench or socket with ratchet
- Phillips screwdriver 8" long
- Utility knife
- Safety glasses and light duty protective gloves

NOTE: Power tools are NOT recommended unless they are equipped with a torque limiting device which can limit the torque to 10-foot lbs. maximum at aluminum attachment points, and 15-foot lbs. maximum for all other attachment points.

Unpack your order and separate like parts into separate areas. Be careful not to damage parts as they are being moved around and put into position. Also be sure all parts are removed from the packing materials before these materials are thrown away.

Locate the Hardware Kits and keep them in a central area. If the assembly is going to take more than one day, all individual hardware pieces should be returned to a central location.

Check all parts and Hardware Kits against the itemized packing list found with the assembly instructions. If you believe there are parts missing from your order, please contact Treston customer service at 770-721-7980.

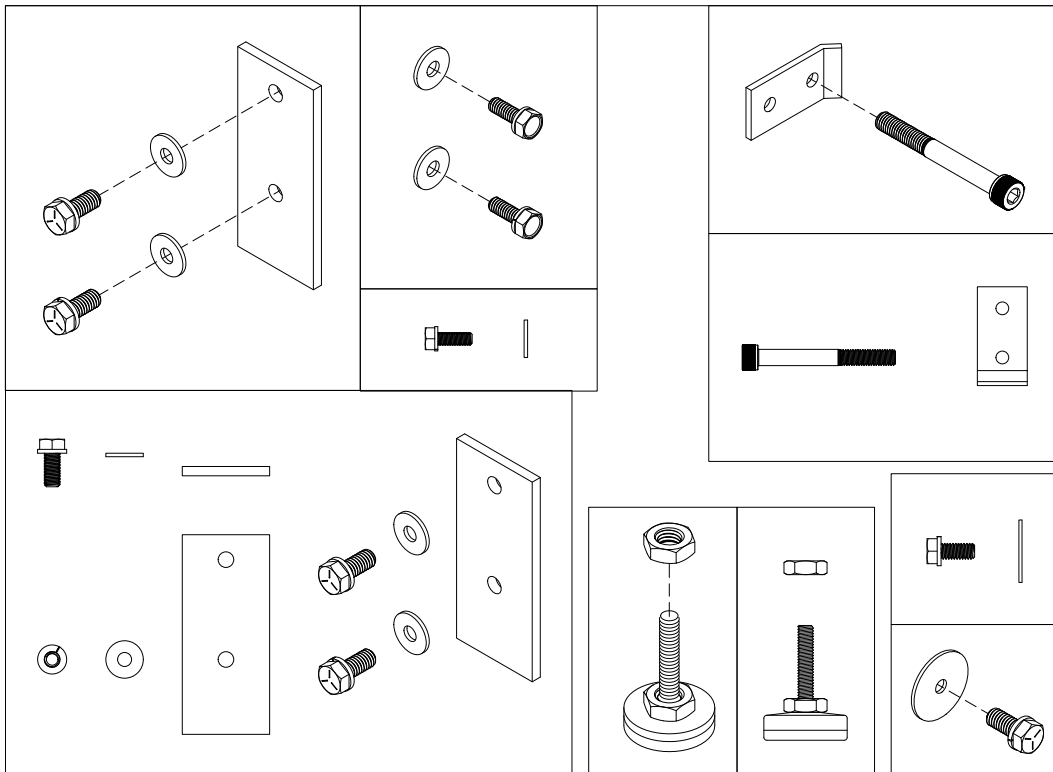
05/03/2024
3 (9)

PRE-ASSEMBLY CHECK LIST

Your bench has been carefully packed at the factory to prevent damage during shipment. Unpack all parts and examine them for damage. Contact your freight carrier for freight claims information if your order was shipped "freight collect" or "pre-pay and add". Contact Treston Inc. at 770-721-7980 if parts are missing.

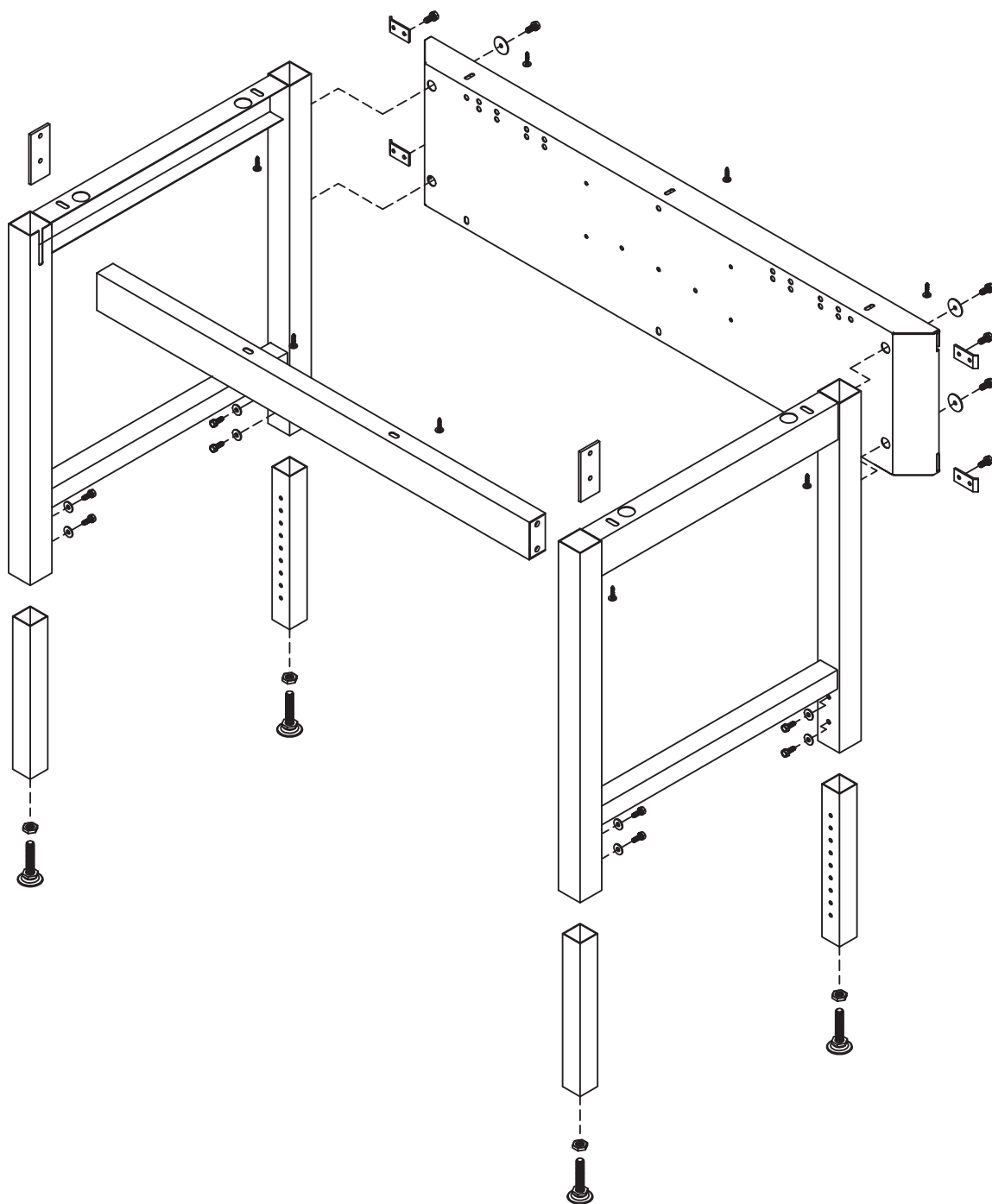
HARDWARE KIT (Order No. HWR091)

Description	Qty
5/16-18x.75 Hex Head Bolt	8
1/4 Flat Washer	12
12mm Floor Glide	4
1/4-20x.75 Hex Head Bolt	8
Bench Connector Plate	2
#8x1 Wood Screw	10
#10 Flat Washer	10
1/4 Flat Fender Washer	4
Upright Attachment Bolt	4
M8x16 Screw	4
M12 Nut	8



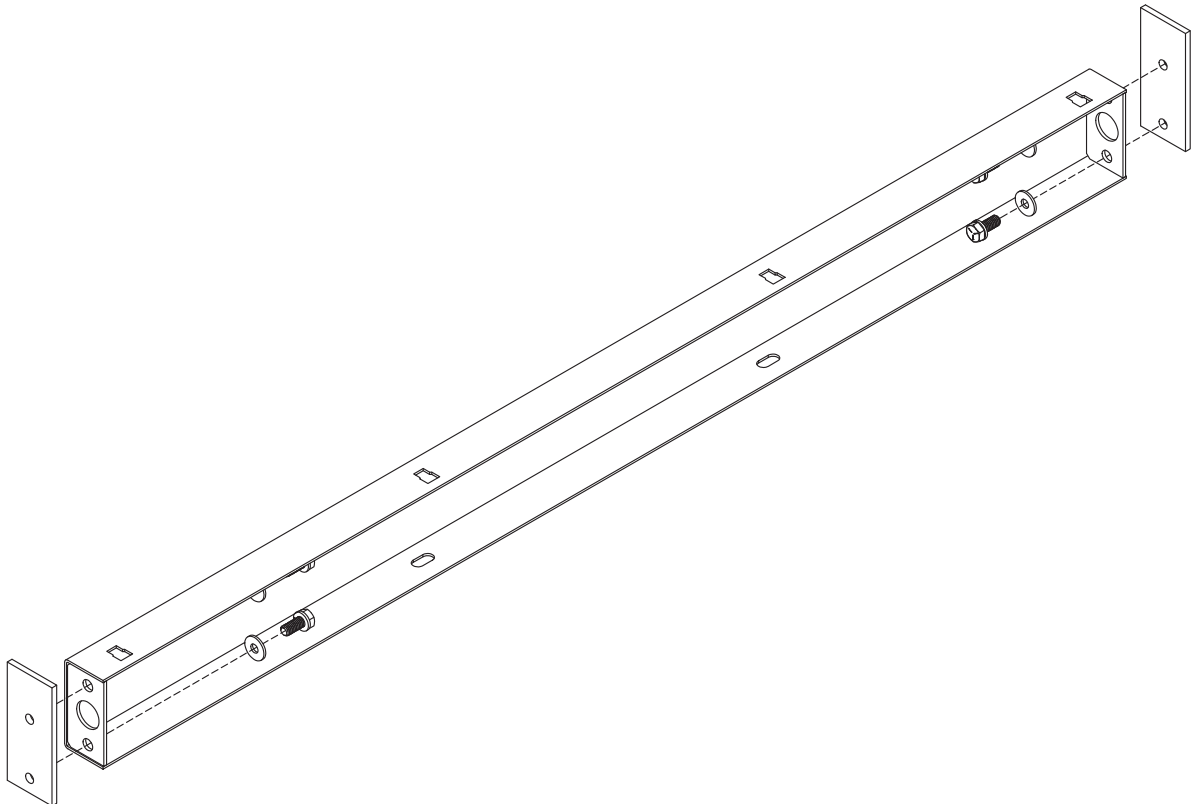
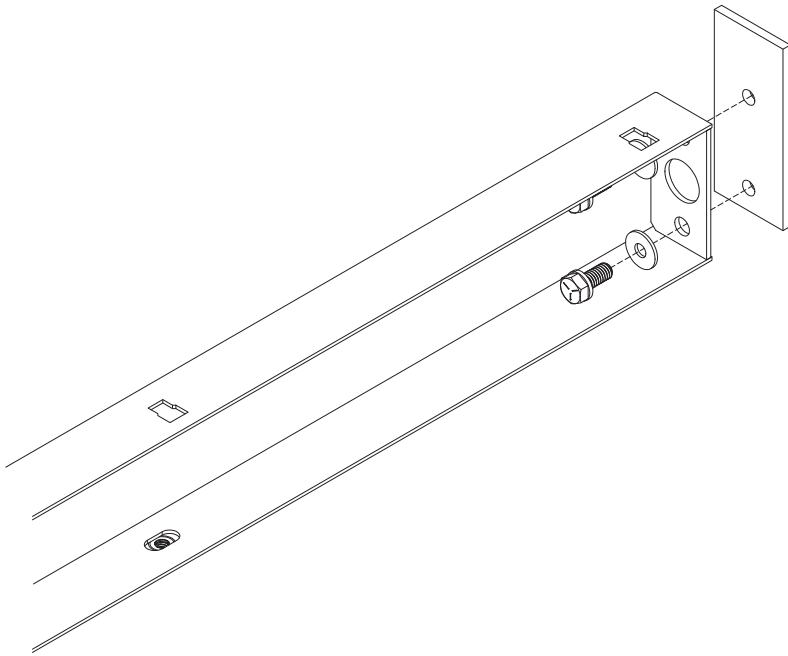
ASSEMBLY INSTRUCTIONS
Cornerstone Bench
AI-003

05/03/2024
4 (9)



ASSEMBLY INSTRUCTIONS
Cornerstone Bench
AI-003

05/03/2024
5 (9)



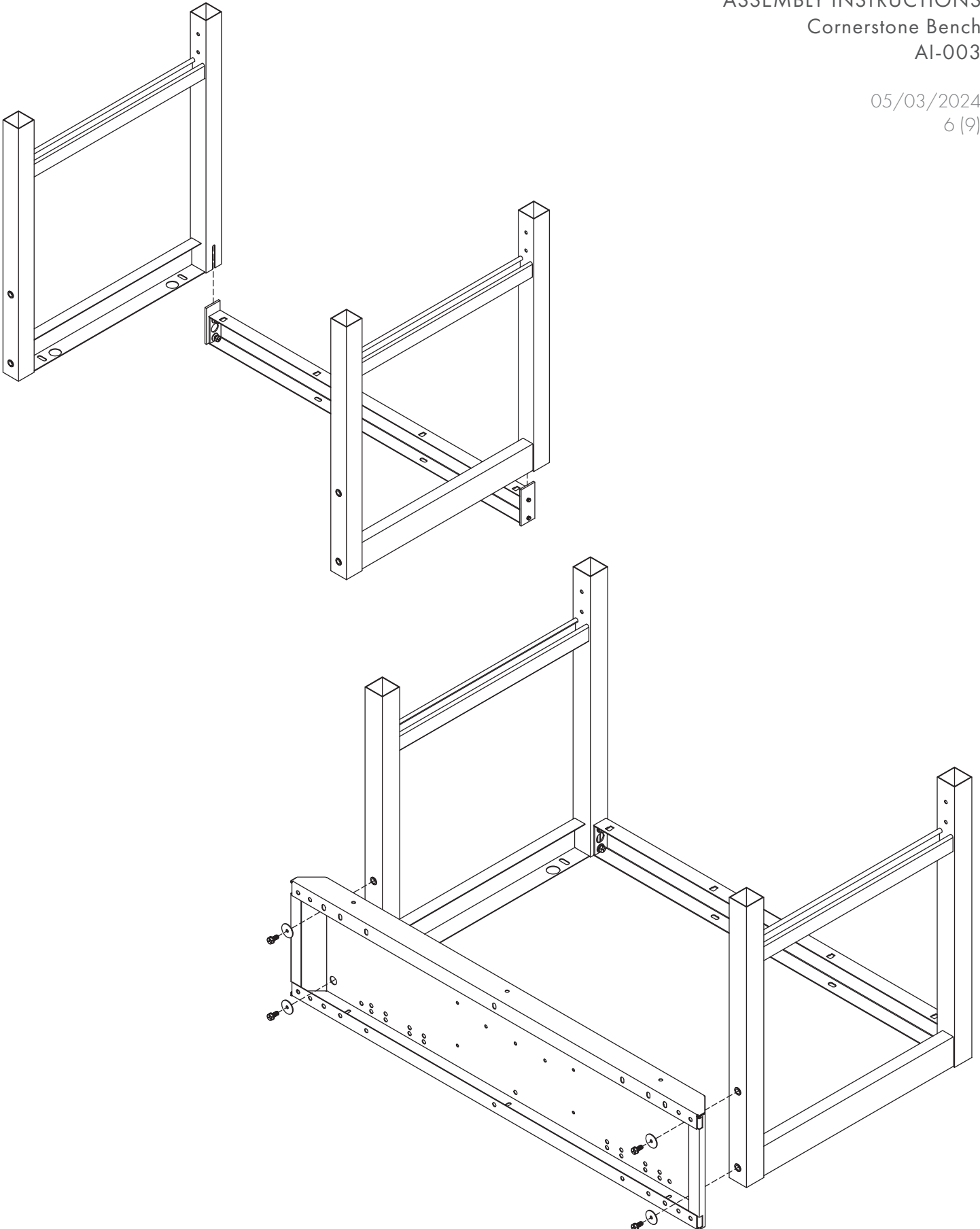
ASSEMBLY INSTRUCTIONS

Cornerstone Bench

AI-003

05/03/2024

6 (9)

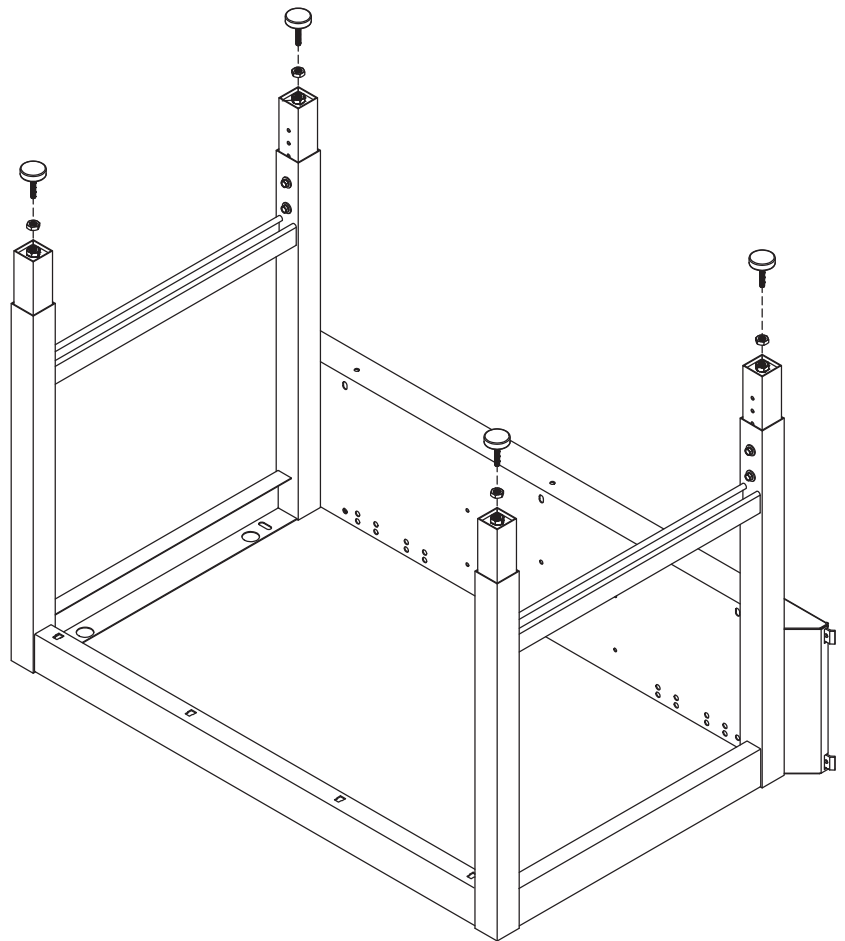
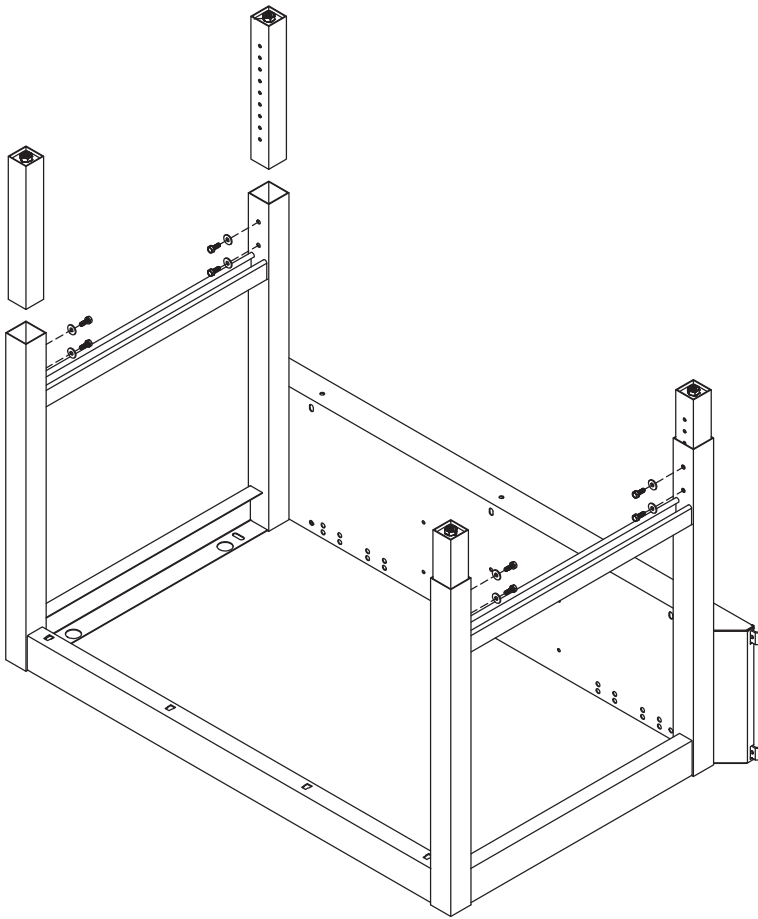


Treston • 156 Bluffs Court, Canton, GA 30114

Tel. 800.437.6772 • Fax 770.720.6584 • infousa@treston.com • www.treston.us

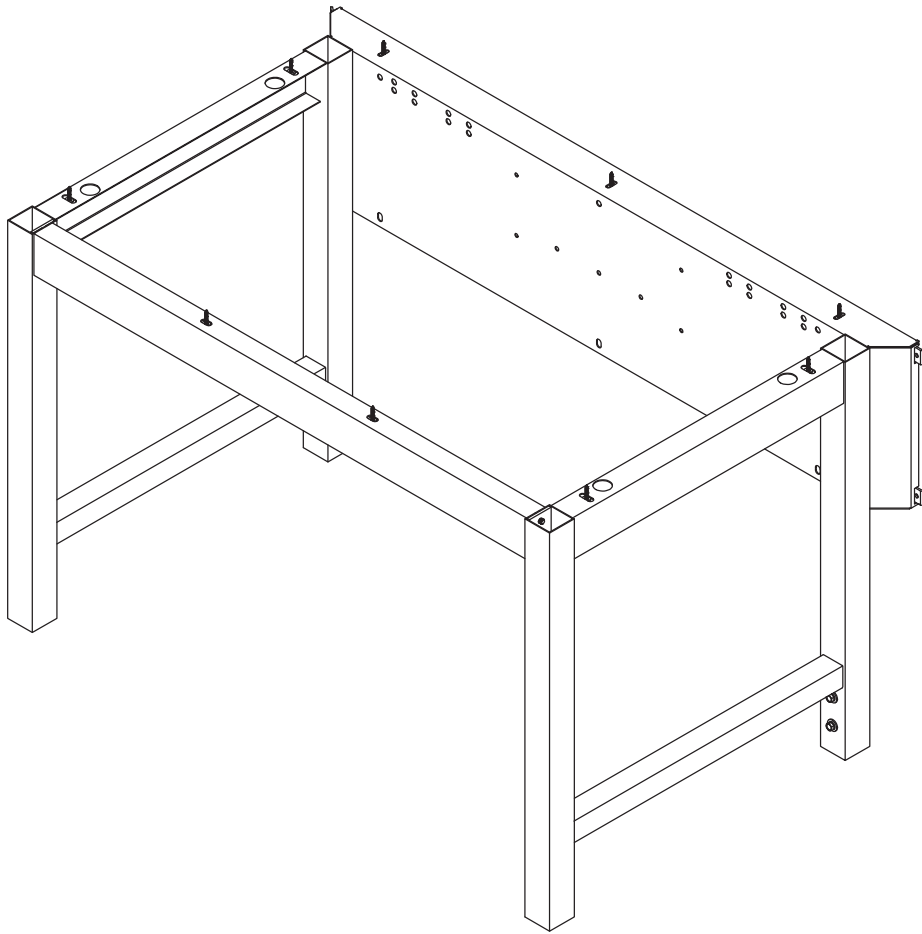
ASSEMBLY INSTRUCTIONS
Cornerstone Bench
AI-003

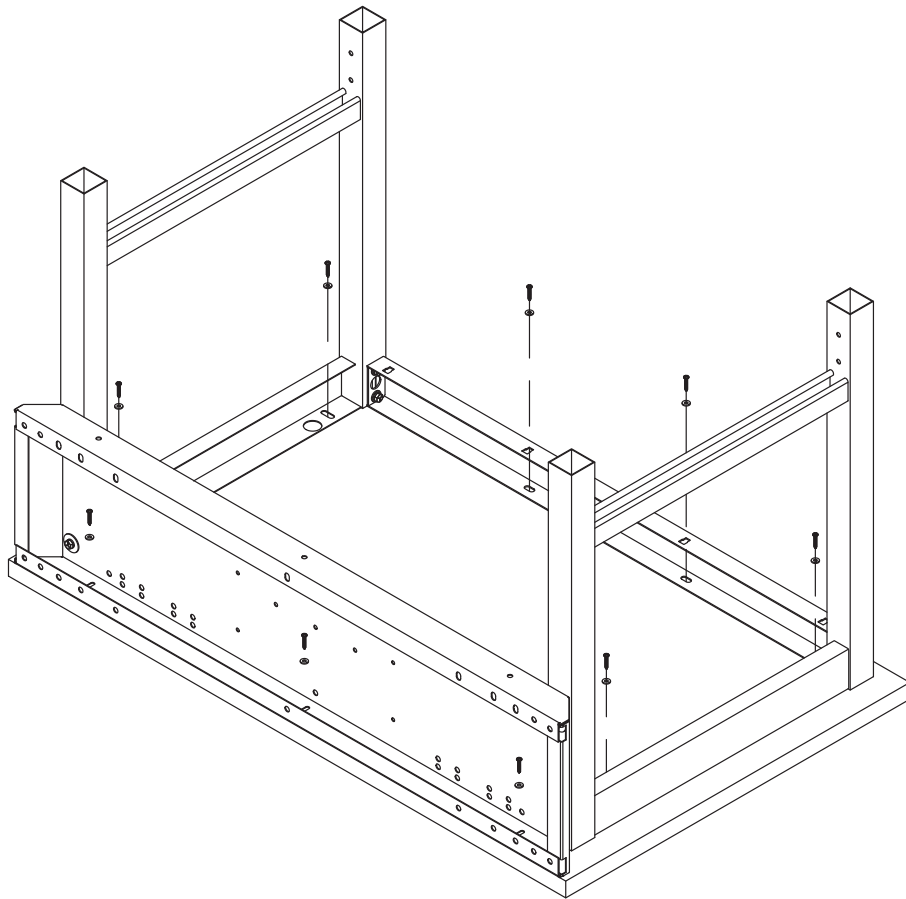
05/03/2024
7 (9)



ASSEMBLY INSTRUCTIONS
Cornerstone Bench
AI-003

05/03/2024
8 (9)





LAMINATE

Treston laminate tops assembled with wood screws provided. For easy assembly, tops can be attached while bench frame is upside down (shown above).

PHENOLIC

WARNING: DO NOT USE provided screws from the hardware pack provided with the table. These screws are for laminate work surfaces only.

Treston phenolic tops can be assembled in 2 ways:

- **Mechanical fasteners** - Screws to be provided by the installer. Pre-drill a pilot hole in the bottom of the work surface, taking care to keep from penetrating through the top. The pre-drilled hole should be the same length as the screw shaft. The screw should be slightly larger in diameter than the pilot hole. Use a coarse threaded screw, wood or machine.
- **Adhesive** - Provided by the installer. Use 100% silicon. Apply several "spots" or a continuous bead to the top of the table frame. Position the work surface as centered on the frame and let cure for 12 hrs at room temp.