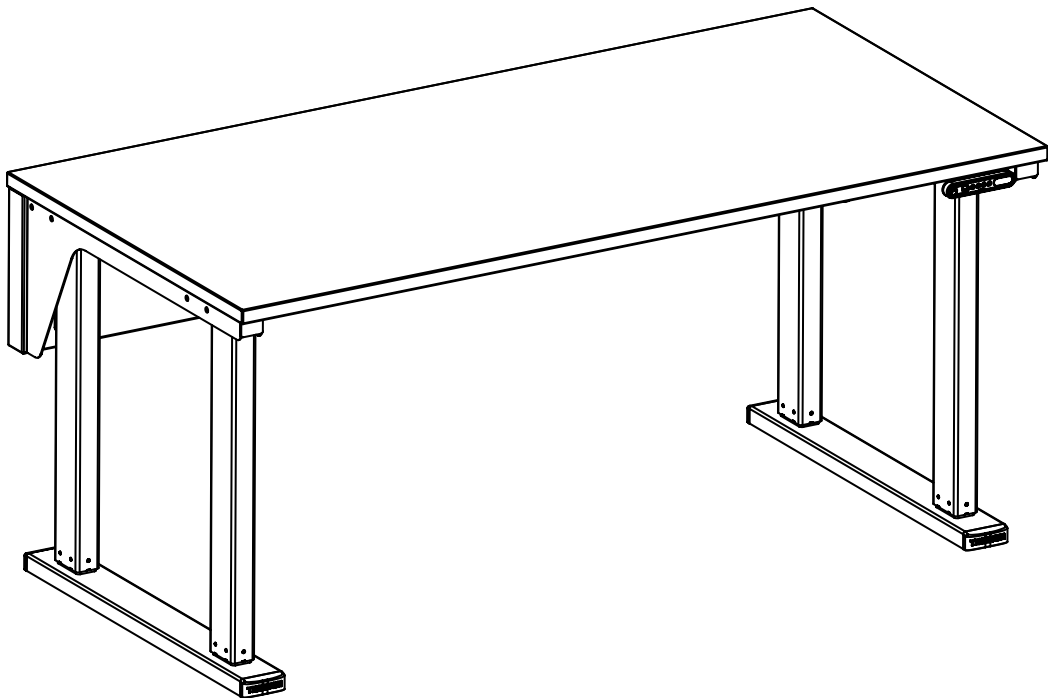


Treston QuatreX
User, assembly and maintenance instructions



ATTENTION NOTES:

Treston Inc. takes great care in the packaging of its products; however, damage can occur during shipment. Check all packages and parts for any signs of damage. If damage is evident STOP and contact the carrier that delivered your order. Request a freight claim inspector to document the damage and begin the freight claim process.

Tools required to assemble your QuatreX Bench are:

- 5 mm allen key
- 7 mm allen key
- 17 mm wrench
- T25 Torx bit screwdriver
- Phillips screwdriver
- Rubber Mallet
- Safety glasses and light duty protective gloves

NOTE: Power tools are NOT recommended unless they are equipped with a torque limiting device which can limit the torque to 10-foot lbs. maximum at aluminum attachment points, and 15-foot lbs. maximum for all other attachment points.

Unpack your order and separate like parts into separate areas. Be careful not to damage parts as they are being moved around and put into position. Also be sure all parts are removed from the packing materials before these materials are thrown away.

Locate the Hardware Kits and keep them in a central area. If the assembly is going to take more than one day, all individual hardware pieces should be returned to a central location.

Check all parts and Hardware Kits against the itemized packing list found with the assembly instructions. If you believe there are parts missing from your order, please contact Treston customer service at 770-721-7980.



IMPORTANT: WORK SURFACE ATTACHMENT WARNING

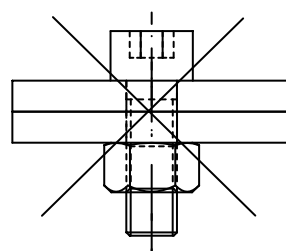
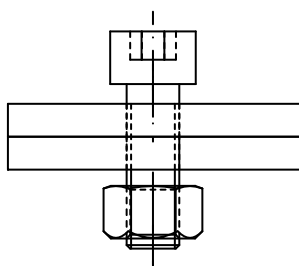
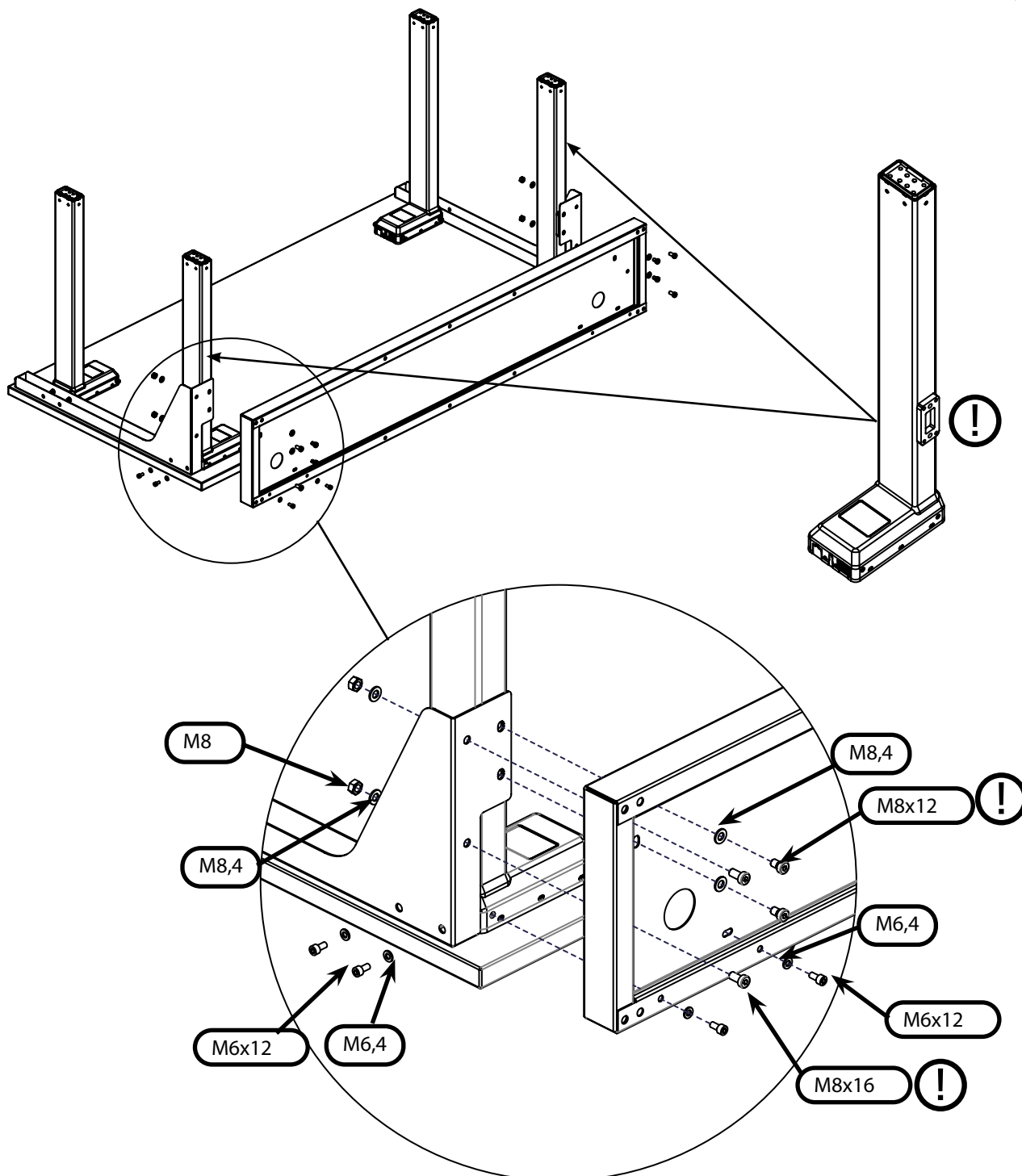
LAMINATE:

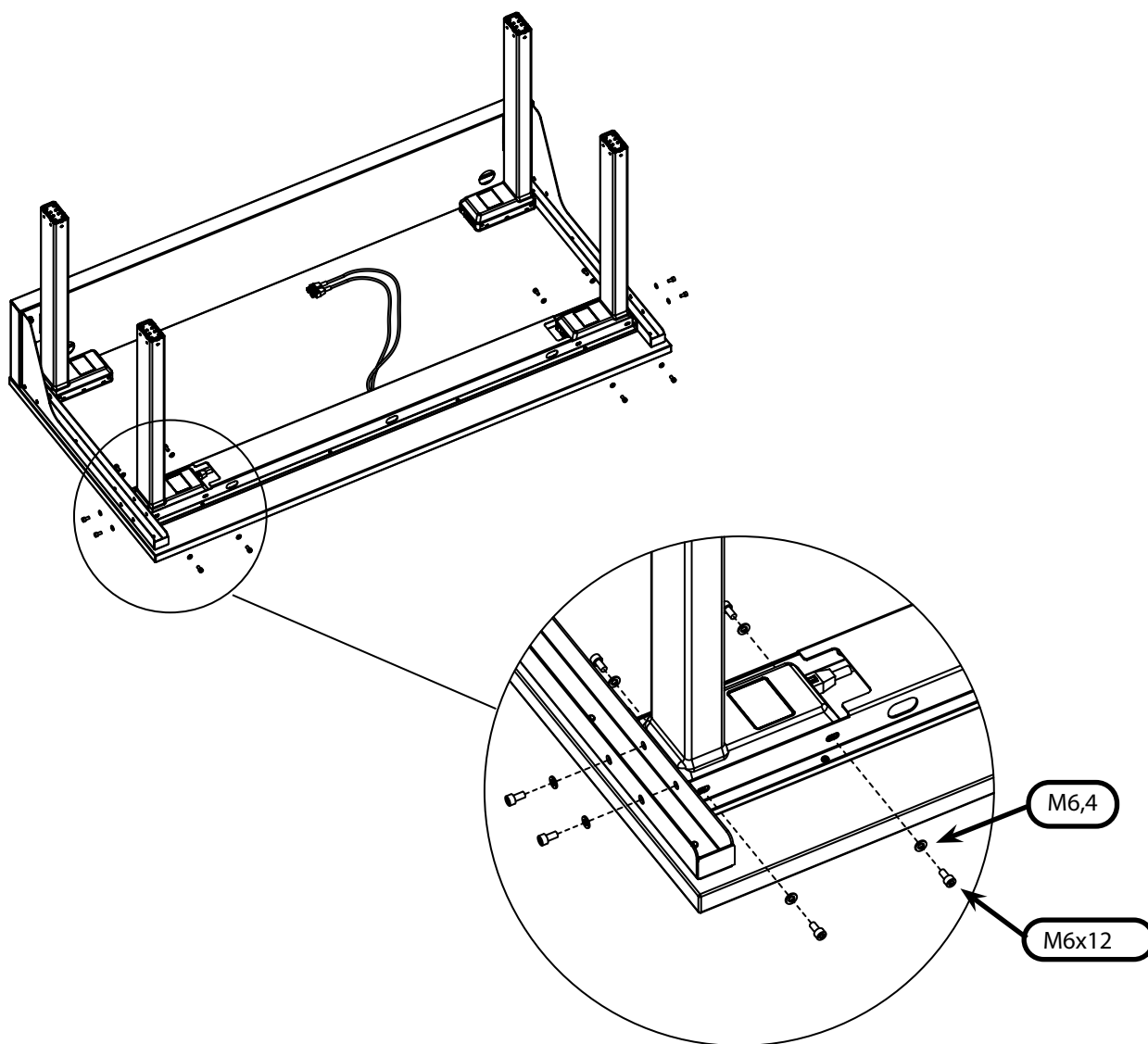
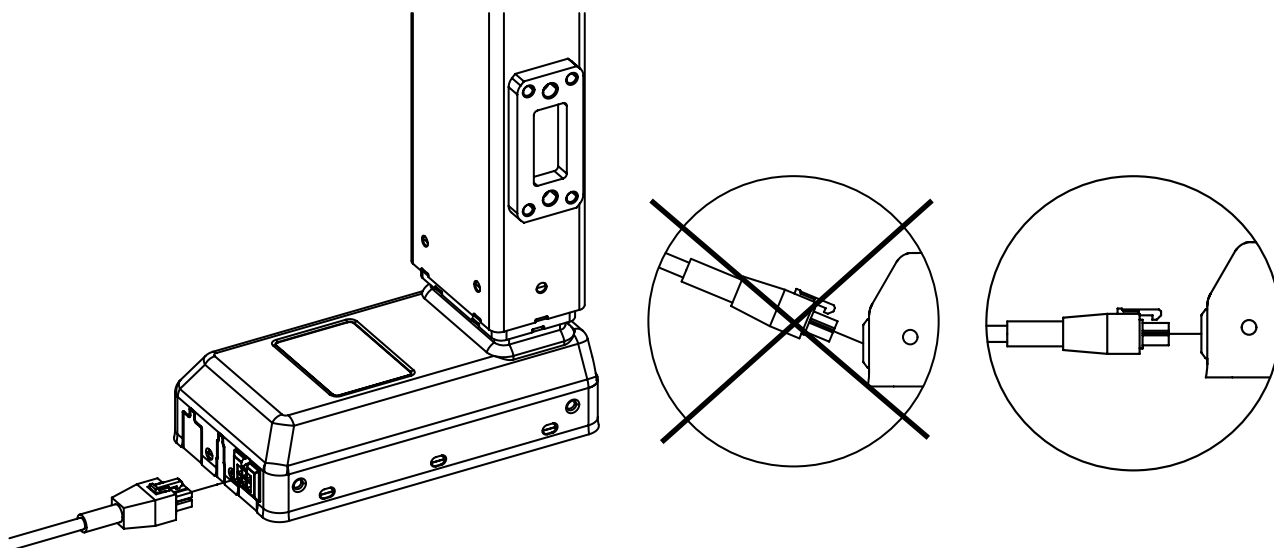
Treston laminate tops assembled with wood screws provided. For easy assembly, tops can be attached while bench frame is upside down (shown above).

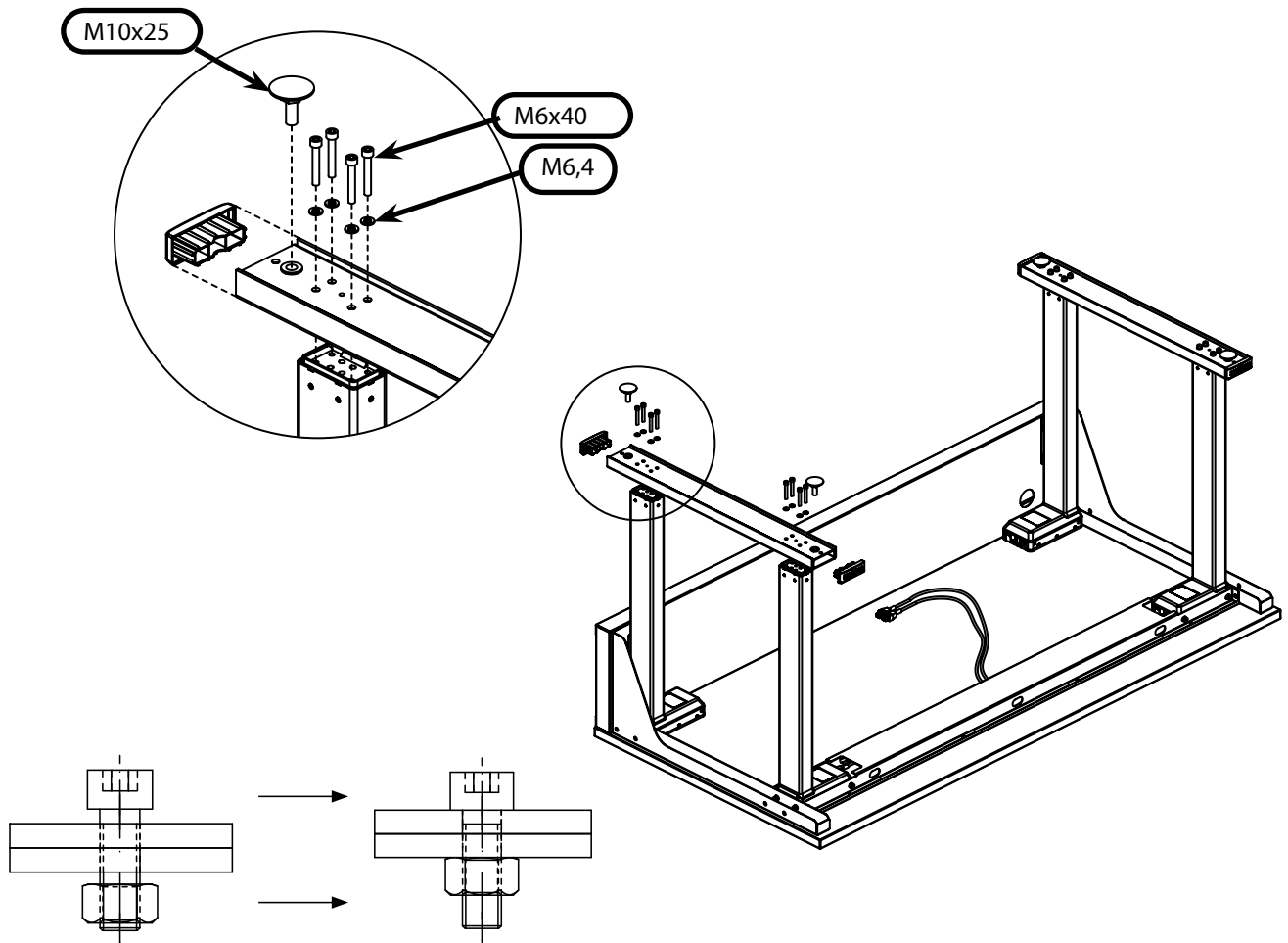
PHENOLIC: WARNING: DO NOT USE provided screws from the hardware pack provided with the table. These screws are for laminate work surfaces only.

Treston phenolic tops can be assembled in 2 ways:

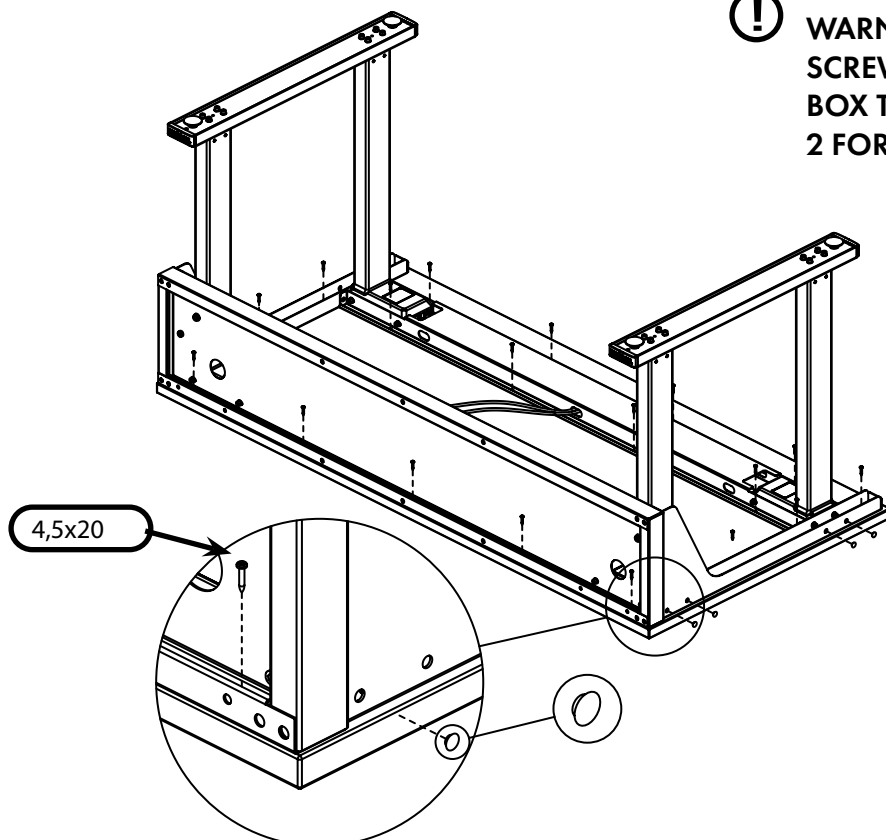
- **Mechanical fasteners** - Screws to be provided by the installer. Pre-drill a pilot hole in the bottom of the work surface, taking care to keep from penetrating through the top. The pre-drilled hole should be the same length as the screw shaft. The screw should be slightly larger in diameter than the pilot hole. Use a coarse threaded screw, wood or machine.
- **Adhesive** - Provided by the installer. Use 100% silicon. Apply several "spots" or a continuous bead to the top of the table frame. Position the work surface as centered on the frame and let cure for 12 hrs at room temp. **This is the recommended method of attaching phenolic tops.**

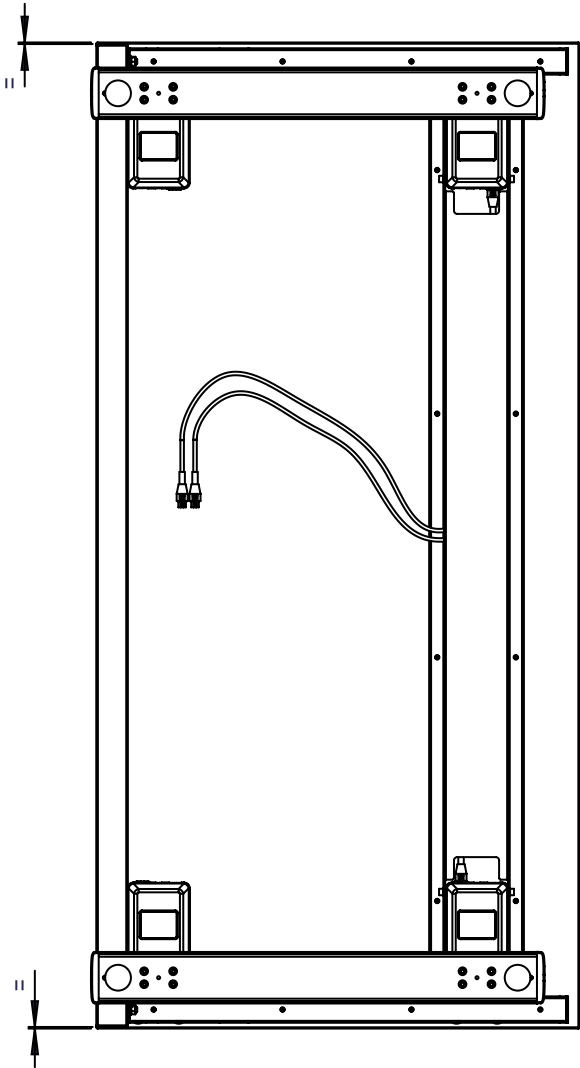
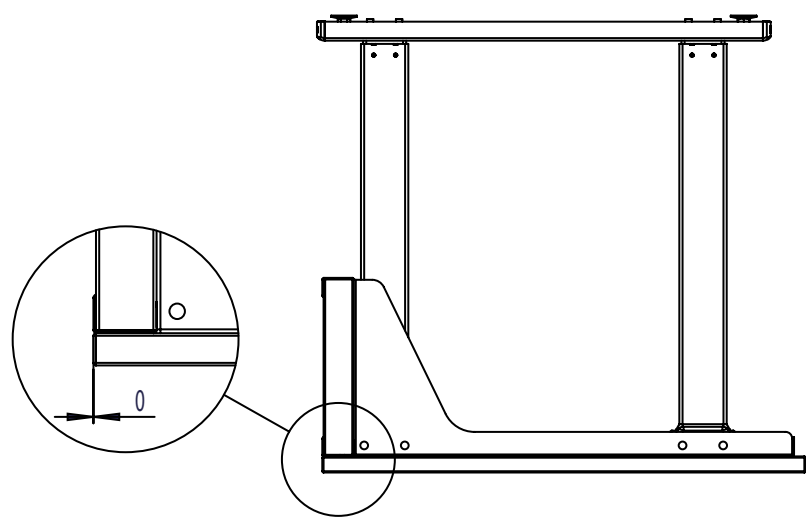


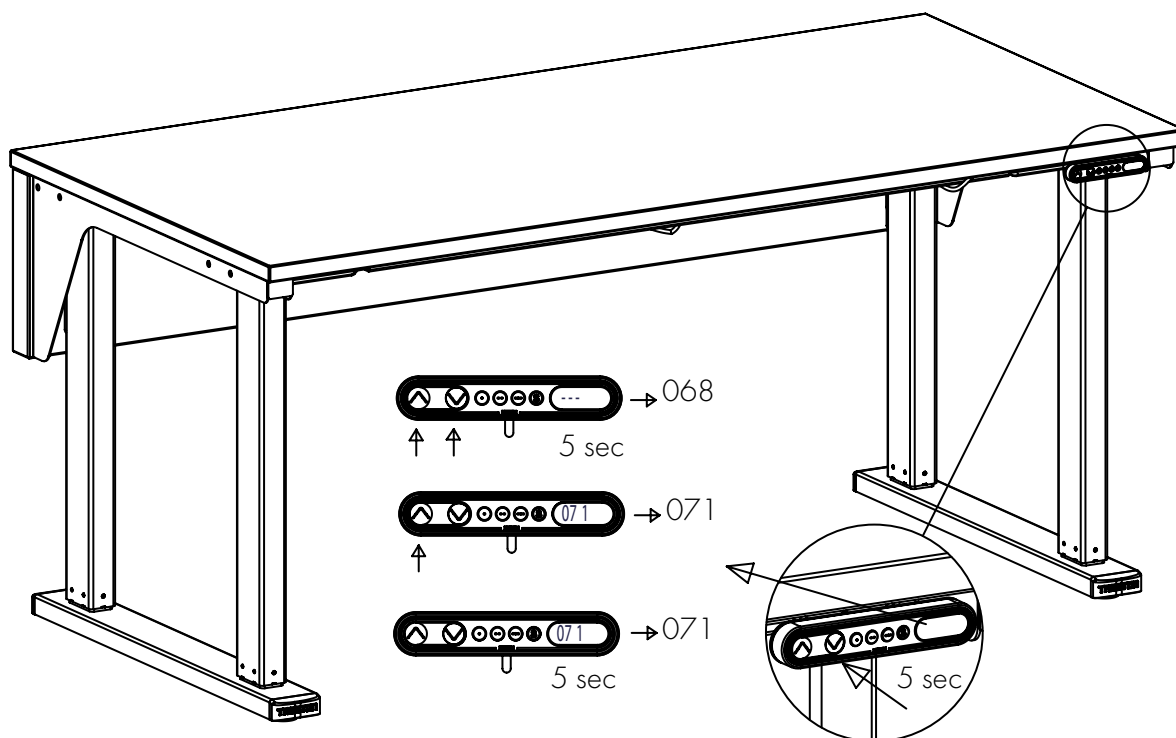
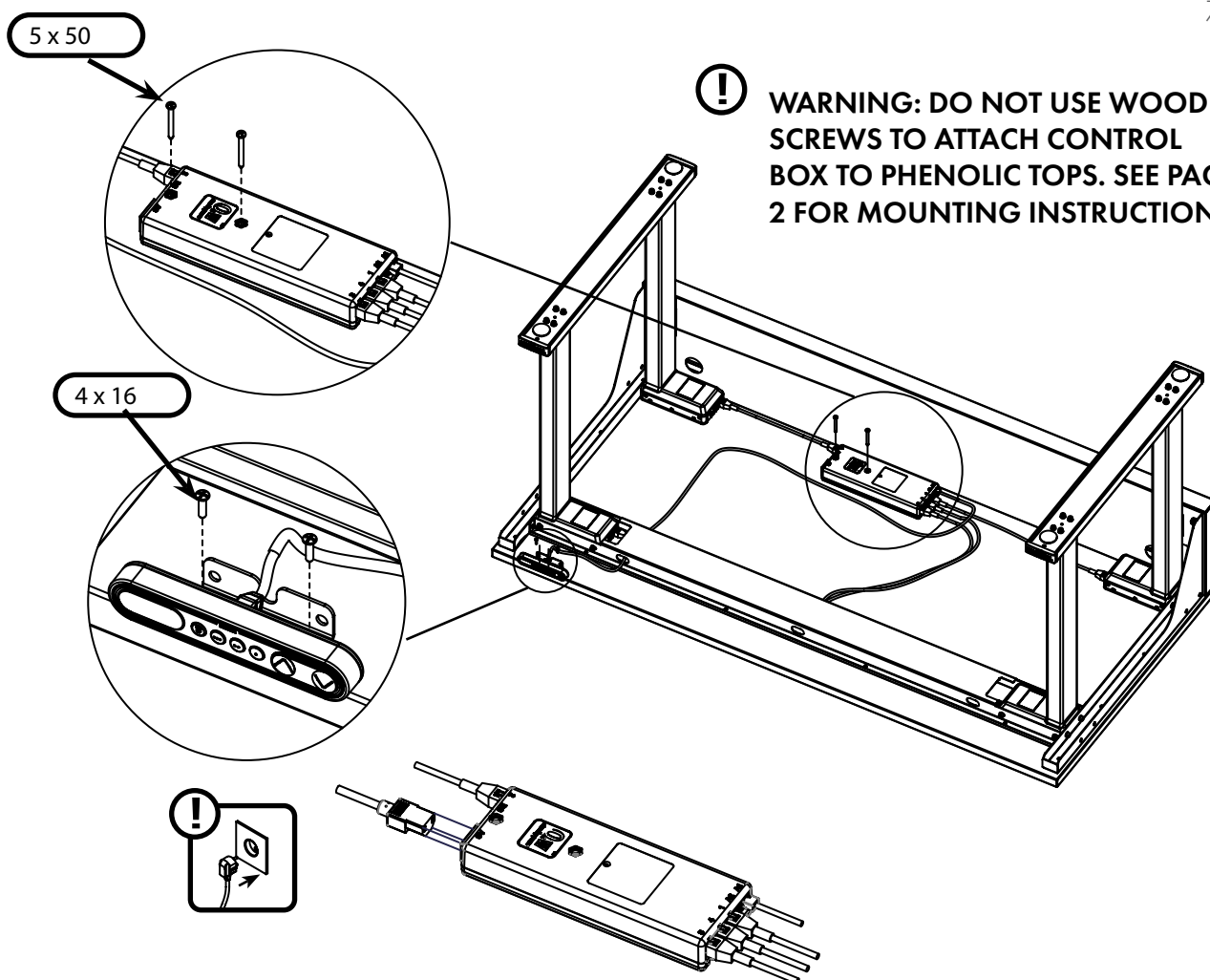


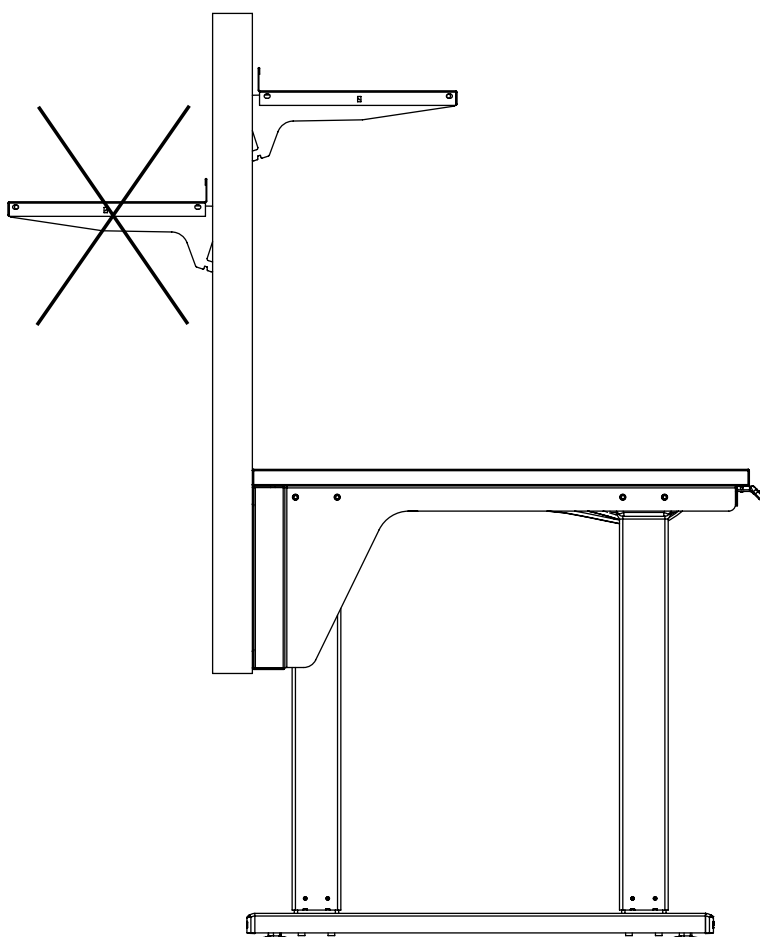
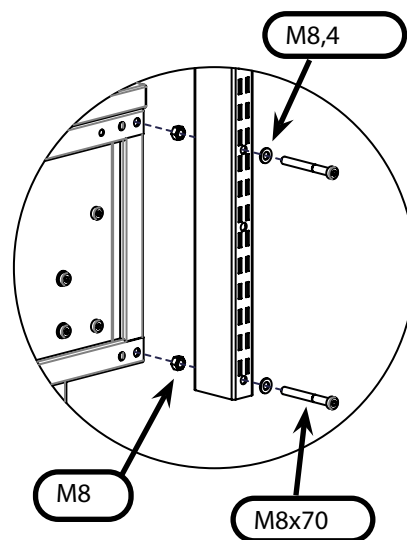
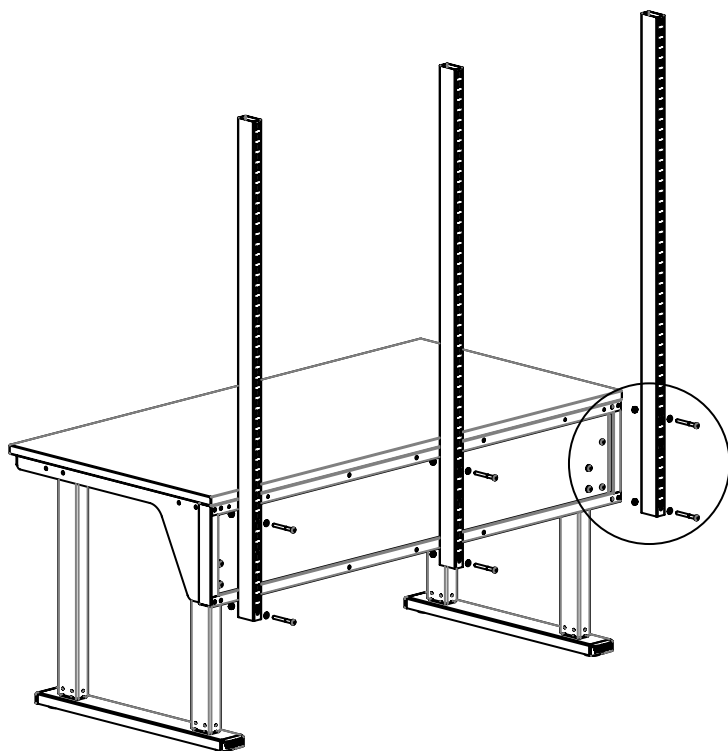


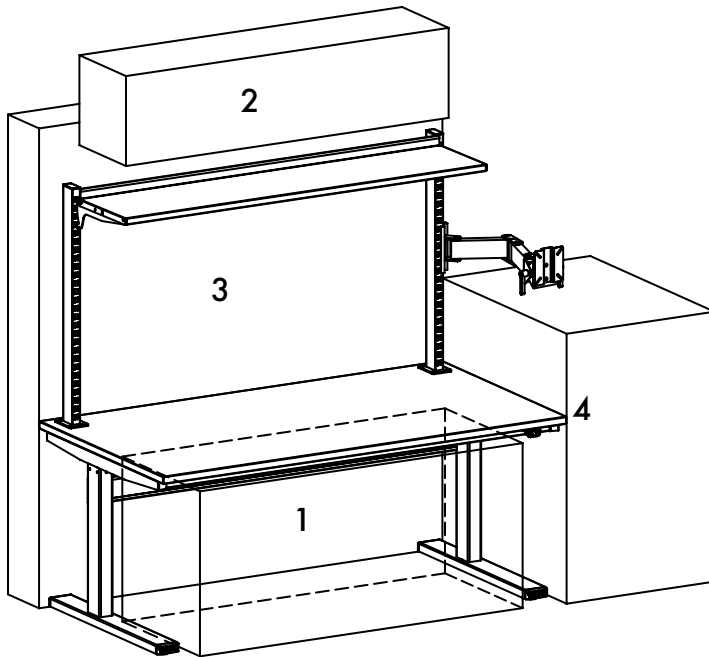
WARNING: DO NOT USE WOOD SCREWS TO ATTACH CONTROL BOX TO PHENOLIC TOPS. SEE PAGE 2 FOR MOUNTING INSTRUCTIONS.











Ensure free space before adjusting the workstation.

- 1) under the workstation
- 2) on top of the workstation / uprights
- 3) behind the workstation
- 4) on the both sides of the workstation

PRODUCT OVERVIEW

This height-adjustable, motorized workbench is designed for ergonomic and modular use in professional industrial environments. It is especially well-suited for light assembly work. The workbench includes electric actuators, a control box, and a user-friendly control panel.

INTENDED USE

The workbench is intended for indoor use only, in dry, clean conditions. It should not be exposed to moisture, corrosive substances, or excess dust. The unit carries an IP20 rating. It is not suitable for use in environments with explosion risks (EX/ATEX-rated areas).

OPERATING TEMPERATURE

This product is designed to operate in temperatures ranging from 50°F to 104°F (10°C to 40°C).

FIRST-TIME SETUP

Before using the workbench for the first time, the height adjustment system must be reset. To do this, lower the table to its lowest position. Once it reaches the bottom, press and hold the down arrow button for a few more seconds until the table completes the reset.

POWER REQUIREMENTS

The workbench can be connected to either a 115V / 60Hz power source, which is standard in the U.S., or a 230V / 50Hz network used internationally.

OPERATION

The maximum load capacity is indicated on the work surface and must not be exceeded. The load should always be evenly distributed across the tabletop. To raise the work surface, press the up arrow on the control panel. To lower it, press the down arrow. The motor is rated for a 10% duty cycle, which means it can run for two minutes followed by 18 minutes of rest.

NOISE LEVEL

This workbench operates at a low noise level, with the system staying below 55 dB(A) during use.

MAINTENANCE

The motors and control unit are maintenance-free and should not be opened. However, all screw joints under mechanical stress should be inspected regularly. The tabletop should be cleaned regularly using a soft duster or a damp cloth. In electrostatic discharge (ESD) protected areas, be sure to use only approved cleaning supplies. Any dirt or buildup on the casters should also be removed periodically, as it can affect the ESD properties of the workstation.

LOAD CAPACITY

The adjustable table can support up to 660 lbs, provided the load is evenly distributed across the surface.

SAFETY WARNINGS

Always ensure that no one and nothing is under the table when lowering it to prevent injury or damage. The workbench must never be used to lift or transport people. Before performing any repairs or adjustments, disconnect the unit from the power supply. The workbench is not designed to be bolted or anchored to the floor. For replacement parts or service assistance, please contact your local representative.

EU Declaration of Conformity

Name Treston Oy
Address Sorakatu 1, 20730 Turku, FINLAND

Declare under our sole responsibility that the following product,

product

- Brand name: Treston QuatreX
- Model/type: QXxxxx-41

is in conformity with the

- Machinery Directive: 2006/42/EC
- Low Voltage directive LVD 2014/35/EU
- Electromagnetic Compatibility Directive: 2014/30/EU
- Restriction of Hazardous Substances directive: 2011/65/EU,

and the following harmonised standards and technical specifications have been applied:

Machine: EN ISO 12100:2010
EN ISO 7250-1:2017
EN ISO 14738:2009

LVD: EN 60335-1:2012+AC:2014+A11:2014
+A13:2017+A1:2019 +A14:2019 +A2:2019
EN 62233:2008+AC:2008

EMC: EN 61000-6-2:2005+AC:2005
EN 61000-6-3:2007+A1:2011+AC:2012

RoHS: EN IEC 63000:2018

Turku, 30.10.2024



Kimmo Lehti
Director, Products
Treston Oy