



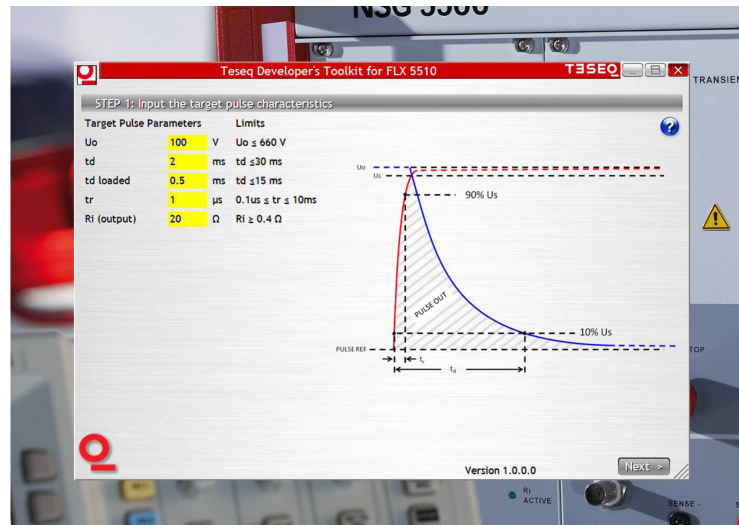
FLX 5510 AND DIY 5510 THE ULTIMATE IN FLEXIBILITY - YOUR PROJECT, YOUR WAY



Calculate, populate and simulate with the power of the FLX 5510 Solutions Dev. Kit. Using the DIY 5510 project module and the supplied wizard, the FLX 5510 becomes a true Do It Yourself plugin solution for your unique NSG 5500 transient immunity needs. With the FLX 5510, we provide you the tools to create your pulse for your special application.

Calculate using provided tools. We help take the mystery out of designing your own special pulses. We provide a wizard to help you decide what components to use to get the pulse you need.

- Build your own pulse networks
- 100% compatible with every NSG 5500 system - no firmware or other upgrades required
- Easy solution for special projects
- Plug in a DIY 5510 submodule with your design for your needs
- Supports a writeable and erasable surface for marking your project

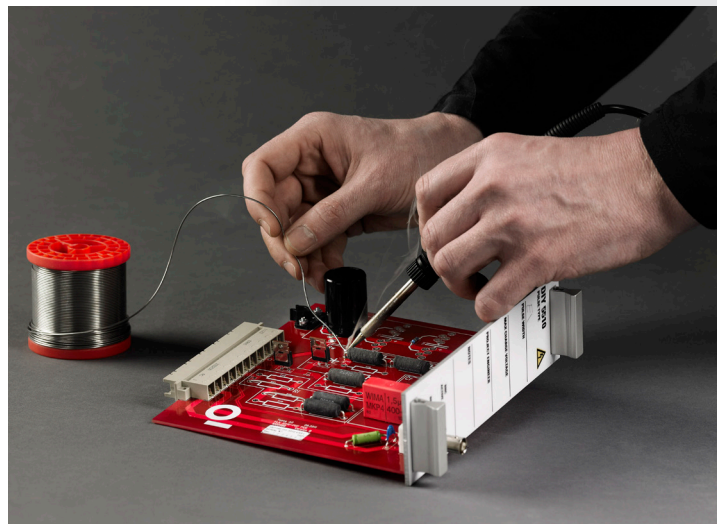




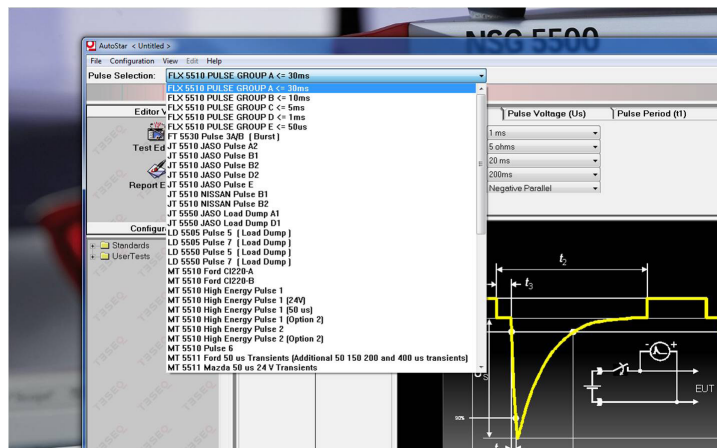
FLX 5510 AND DIY 5510 THE ULTIMATE IN FLEXIBILITY - YOUR PROJECT, YOUR WAY



Populate the provided DIY 5510 project module. Each FLX 5510 includes two DIY 5510 project modules – one example fully populated and functional, and one empty module ready to accept your project.



Simulate using the NSG 5500: we provide the high voltage power supply and superior quality 100 A CDN, no more questionable pulse quality or uncertain calibration. Slide it into an NSG 5500 and it just works. And of course, it is fully integrated into our class-leading AutoStar 5 immunity software including sequencing, reporting many coupling options and much more.



Teseq AG
Nordstrasse 11F 4542 Luterbach Switzerland
T +41 32 681 40 40 F +41 32 681 40 48
sales@teseq.com www.teseq.com

© March 2012 Teseq®
Specifications subject to change without notice. Teseq® is an ISO-registered company. Its products are designed and manufactured under the strict quality and environmental requirements of the ISO 9001. This document has been carefully checked. However, Teseq® does not assume any liability for errors or inaccuracies.



FLX 5510 AND DIY 5510 **THE ULTIMATE IN FLEXIBILITY -** **YOUR PROJECT, YOUR WAY**



Technical specifications

Pulse network peak current:	300 A
Pulse network max. voltage:	660 V
Pulse width max.:	30 ms
DUT battery (constant):	60 V/100 A
DUT battery peak current:	250 A

Note: Depends on components used, pulse parameters and output connector.
See full technical documentation for more details, or ask for our demo kit including development tools.

Teseq AG
Nordstrasse 11F 4542 Luterbach Switzerland
T +41 32 681 40 40 F +41 32 681 40 48
sales@teseq.com www.teseq.com

© March 2012 Teseq®
Specifications subject to change without notice.
Teseq® is an ISO-registered company. Its products are designed and manufactured under the strict quality and environmental requirements of the ISO 9001. This document has been carefully checked. However, Teseq® does not assume any liability for errors or inaccuracies.

691-289A March 2012

T E S E Q
Advanced Test Solutions for EMC