



STARTER™ Electrodes Selection Guide



Ingeniously Practical



Table of Contents

4	Starter™ Electrodes
5	pH Electrodes Selector Guide
6	pH Electrodes Structure
8	pH Electrodes
10	ORP Electrodes
11	Reference Electrode & Temperature Probes
12	Conductivity Electrodes
14	Dissolved Oxygen Sensors
15	ORP/Conductivity/DO Electrodes Selector Guide
16	Accessories
17	Model Selection Guide

STARTER™ Electrodes

Accurate and precise measurement has been our main focus since our inception in 1907. After more than a century of developing balances that have provided the reliable and precise weight determination that is essential to laboratory applications, OHAUS is proud to also offer our expertise in measurement in a line of electrochemistry products.

The Starter™ Series includes pH, reference, oxidation-reduction potential (ORP) electrodes, as well as conductivity, dissolved oxygen (DO) and temperature probes that can be used in conjunction with our bench and portable meters. In this section, you will find essential information regarding OHAUS' portfolio of Starter sensors, including product specifications and sample types they were designed to measure. In addition to the sensors, information regarding accessories such as conductivity and pH solutions used for calibration, are included.

Basic Theory of pH

pH is a one of the most commonly measured parameters in chemical and life science research, as well as is many different industries, including water and wastewater treatment, food technology, environmental protection, production and agriculture.

pH is defined as the negative logarithm of the hydrogen ions concentration in the sample:

$$\text{pH} = -\log [\text{H}^+]$$

pH provides a convenient way to compare the relative acidity or alkalinity of a sample at a given temperature.

pH electrodes produce different mV values in solutions with different pH. Ideally, at 25°C, a pH electrode should produce a slope of 59.16mV per 1 pH unit.

Electrodes for pH Measurement

pH measurement is usually conducted using a combination electrode that consists of a pH-sensitive glass electrode that is sensitive to hydrogen ions present in the sample as well as a reference electrode that has a constant potential value.

A potential is developed on the membrane surface when a pH electrode comes into contact with a sample.

pH meters measure variations in the potential and convert it directly to a corresponding pH value, according to the Nernst equation:

$$E = E_0 + (2.303RT/nF)\log[\text{H}^+]$$

pH measurement is sensitive to temperature changes. However, at a pH of 7, temperature will not have an effect on the potential of the system. This is known as the isopotential point. OHAUS' 3-in-1 electrodes are convenient tools that contain a built-in temperature probe that can be used together with a meter to compensate temperature changes without the need for an external temperature probe.

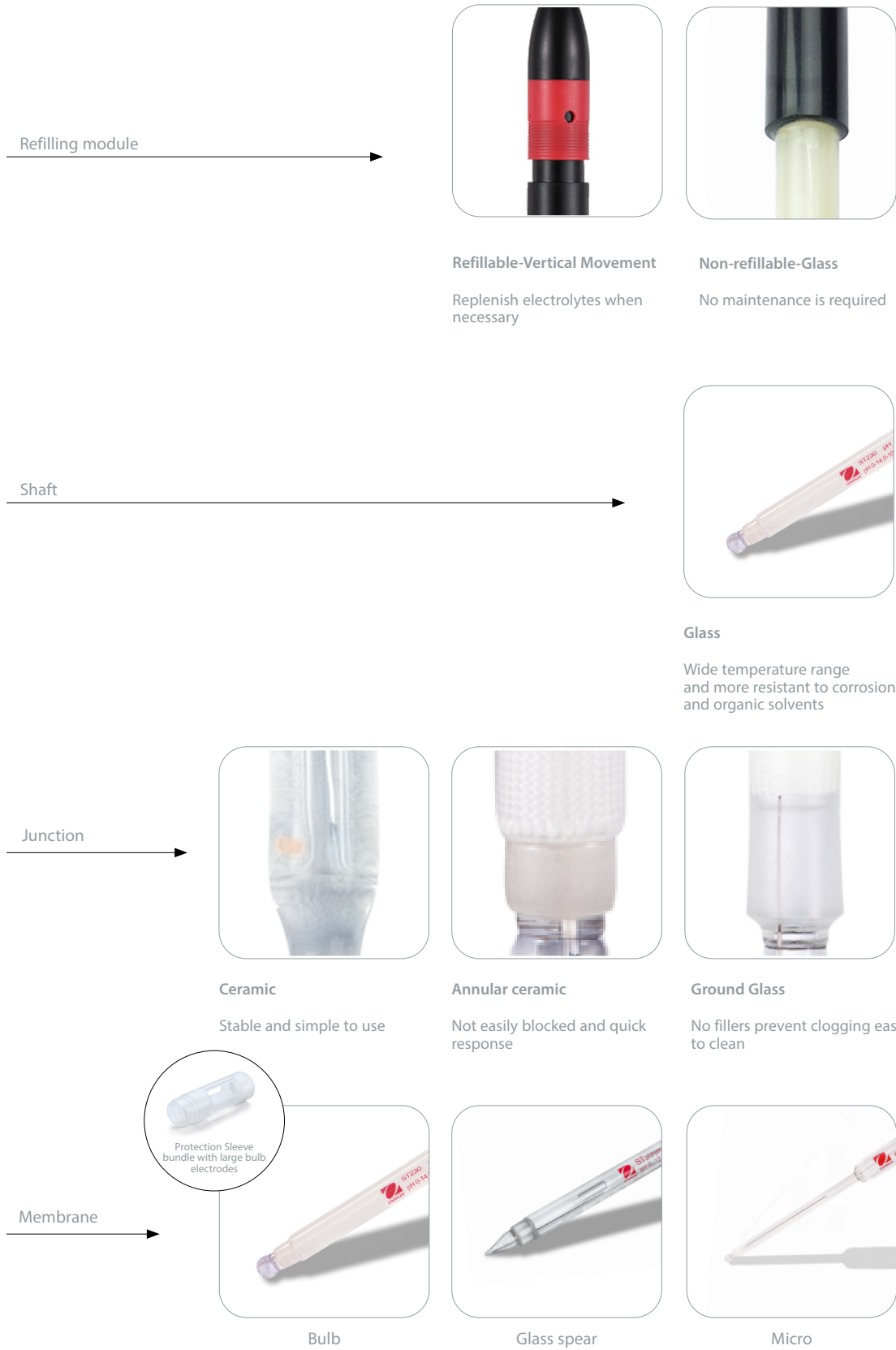
pH Electrodes Selector Guide

OHAUS Starter™ series electrochemistry instruments include electrodes that support advanced pH analysis, including a glass shaft 3-in-1 electrode, micro sample, double salt-bridge, and flat surface pH electrodes. OHAUS launched several pH electrodes, include glass shaft 3-in-1 ST350, micro sample pH electrode STMICRO5 and STMICRO8; double-salt bridge pH electrode ST260 which is fit for tris-buffer solution pH measurement, flat surface pH electrode STSURF and puncture electrodes ST270 and ST272.

pH Electrodes							
Application	Sample Type	Recommendations	Double Junction	Basic	Economy	IP Rated	Micro
General use	Most sample types	Suitable for general purpose measurements	ST410	ST322/ST310	ST210	-	-
Academic experiment	Student use	Study and durable epoxy body for daily use	-	ST310	ST210	-	-
Food	Piercing fruits, cheese and meats	Spear tip for piercing samples	-	ST270	-	-	-
Flat Surfaces	Paper, cheese, meat, agar	Flat surface tip, ensure full contact with the sample	-	-	STSURF	-	-
Biological/ Pharmaceutical	TRIS buffer, proteins, enzymes	Membrane material is specialized, and double junction is more pollution-resistant	ST420	-	-	-	-
Trace Sample	Microtiter plates, test tubes, small flasks and beakers (0.5 mL)	Small diameter to fit into narrow sample containers	-	-	-	-	STMICRO8
Trace Sample	TRIS buffer, proteins, sulfides, fits 96 microwell plates (0.2 mL)	Small diameter to fit into narrow sample containers	-	-	-	-	STMICRO5
Processing Waters	Drinking water, tap water, boiler feed water, distilled water, treated effluent	Epoxy body for durability	-	ST350/ST310	-	-	-
Low Ionic Strength	Deionized water	Refillable for better contact and stable measurements	ST420	-	STPURE	-	-
Surface Waters	Acid rain, rain water	Double junction is more pollution-resistant	ST260	-	-	-	-
High Salinity Waters	Wastewater, seawater	Annular junction to prevent clogging by salting-out crystallization.	-	ST350	ST230	-	-
Field Test	Field or plant use	Epoxy body for durability and gel filled for easy maintenance, IP67 is an option for waterproof use	-	ST322/ST320	-	ST320IP67	-
Emulsions	Shampoo, cosmetics, oils	Annular junction to prevent clogging	-	ST350	ST230	-	-
Viscous Liquids	Slurries, suspended solids, sludges	Annular junction or Open junction with Gel to prevent the electrode from clogging	-	ST350/ST272	ST230/ST280	-	-
Strong Acid and Base	Acids, bases, brines, pH > 12 or pH < 2	Membrane material is specialized, and double junction is more pollution-resistant	ST410	-	ST230	-	-

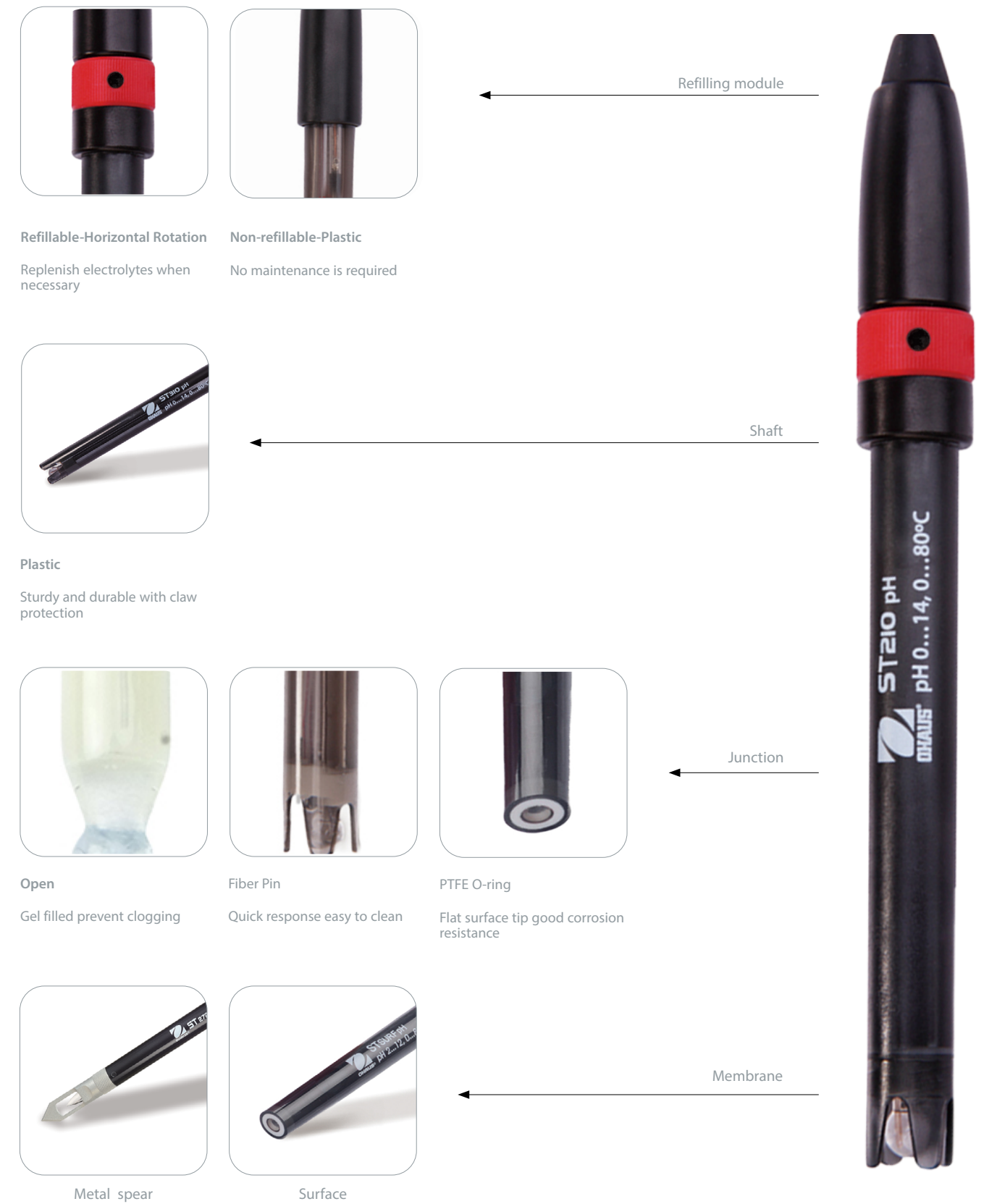
pH 3-in-1 Electrodes Structure

Combines pH sensing, a reference electrode, and temperature measurement in one probe for accurate, convenient, and temperature-compensated pH readings in various solutions.



pH Combined Electrodes Structure

Integrates the pH and reference electrode into one probe for accurate, easy pH measurements.



pH Electrodes

Maintenance of pH Electrodes

pH electrodes are delicate measuring instruments that require proper care and maintenance to produce accurate and reliable results as well as to ensure a long useful life. Electrodes may be shipped with either protective caps or in electrode soaking bottles to prevent cracking or scratching and to keep the glass bulbs moist. Remove the electrode gently from the storage bottle and rinse it with distilled water before use.



	ST420	ST410	ST350	ST280	ST270	ST260	ST230	STPURE
Order No.	30681115	30656037	30129354	30681114	30240974	30129357	83033968	83033969
pH Range	2 to 12	0 to 14	0 to 14	0 to 14	0 to 14	0 to 14	0 to 14	0 to 14
Temperature	5 to 90°C	5 to 90°C	0 to 100°C	5 to 60°C	0 to 100°C	0 to 80°C	0 to 100°C	0 to 80°C
Shaft Material	Glass	Glass	Glass	Glass	Glass	Glass	Glass	Glass
Protection Sleeve	Included	Included	Included	Included	-	Included	Included	-
Shaft Diameter	12 mm	12 mm	12 mm	12 mm	12 mm	12 mm	12 mm	12 mm
Shaft Length	160 mm	120 mm	120 mm	160 mm	120 mm	120 mm	120 mm	120 mm
Sensor Type	Combined	Combined	3 in 1	Combined	Combined	Combined	Combined	Combined
Connection	BNC	BNC	BNC & Cinch	BNC	BNC	BNC	BNC	BNC
Cable	1 m	1 m	1 m	1 m	1 m	1 m	1 m	1 m
Type of junction	Ceramic	Ceramic	Annular Ceramic	Open Junction	Annular Ceramic	Ceramic	Annular Ceramic	Ground Glass
Immersion Height	25 mm	25 mm	20 mm	20 mm	30 mm	20 mm	20 mm	20 mm
Reference System	Ag/AgCl	Ag/AgCl	Ag/AgCl	Ag/AgCl	Ag/AgCl	Ag/AgCl	Ag/AgCl	Ag/AgCl
Fill Type	Refillable	Refillable	Refillable	Non-refillable	Non-refillable	Refillable	Refillable	Refillable
Reference electrolyte	3.3 M KCl	3.3 M KCl	3.3 M KCl	Gel Filled	Gel Filled	3.3 M KCl	3.3 M KCl	3.3 M KCl
Application	TRIS, protein, sulfide	Strong acid/alkali	QC and R&D	Highly suspended, dirty samples	Meat, cheese and fruit	TRIS, sulfide and protein samples	Soil, sludge, colloids, viscous material	Low ionic strength solutions
Feature	Double Junction	Double Junction	Large bulb Quick response	Toughened bulb for rugged lab use	Spear tip	Double junction	Toughened bulb for rugged lab use	Affordable

pH Electrodes

Storage of pH Electrodes

Always keep the pH electrode moist when not in use by using an electrode storage solution (3M KCl). DO NOT store the electrode in distilled or deionized water as this will cause ions to leak out of the glass bulb and reference electrolyte, causing a slow and sluggish response. For long-term storage, always keep the electrode in the bottle in enough storage solution to cover the bulb. Replenish the bottle as needed.



	STMICRO8	STMICRO5	ST322	ST320	ST320 IP67	ST310	ST272	ST210	STSURF
Order No.	30087569	30087566	30681113	83033967	30468960	83033965	30393265	83033966	30129470
pH Range	0 to 14	0 to 14	0 to 14	0 to 14	0 to 14	0 to 14	2 to 12	0 to 14	2 to 12
Temperature	0 to 100°C	0 to 100°C	5 to 60°C	0 to 80°C	0 to 80°C	0 to 80°C	0 to 50°C	0 to 80°C	0 to 100°C
Shaft Material	Glass	Glass	Epoxy	Epoxy	Epoxy	Epoxy	Epoxy	Epoxy	Epoxy
Protection Sleeve	-	-	-	-	-	-	-	-	-
Shaft Diameter	8 mm	5 mm	12 mm	12 mm	12 mm	12 mm	12 mm	12 mm	12 mm
Shaft Length	150 mm	80 mm	165 mm	120 mm	120 mm	120 mm	160 mm	120 mm	120 mm
Sensor Type	Combined	Combined	3 in 1	3 in 1	3 in 1	3 in 1	Combined	Combined	Combined
Connection	BNC	BNC	BNC & Cinch	BNC & Cinch	BNC & Cinch	BNC & Cinch	BNC	BNC	BNC
Cable	1 m	1 m	1 m	1 m	3 m	1 m	1 m	1 m	1 m
Type of junction	Annular Ceramic	Annular Ceramic	Fiber Pin	Fiber Pin	Fiber Pin	Ceramic	Annular Ceramic	Ceramic	PTFE O-ring
Immersion Height	15 mm	15 mm	20 mm	20mm	20 mm	20 mm	40 mm	20 mm	10 mm
Reference System	Ag/AgCl	Ag/AgCl	Ag/AgCl	Ag/AgCl	Ag/AgCl	Ag/AgCl	Ag/AgCl	Ag/AgCl	Ag/AgCl
Fill Type	Refillable	Refillable	Non-refillable	Non-refillable	Non-refillable	Refillable	Non-refillable	Refillable	Refillable
Reference electrolyte	3.3 M KCl	3.3 M KCl	Gel Filled	Gel Filled	Gel Filled	3.3 M KCl	Gel Filled	3.3 M KCl	3.3 M KCl
Application	Semi-micro sample	Semi-micro sample	Laboratory general purpose, routine tests	General purpose	Field test	General purpose	Soil, sludge where glass alone may break	General purpose	Plate surface meats and cheese
Feature	Measure samples as small as 0.5 mL in tube	Measure samples as small as 0.2 mL in 96 well plates	Low maintenance	Low maintenance	Water-proof	Durable	Stainless steel cutting blade	Affordable	Flat bulb

ORP Electrodes

Basic Principle of ORP

Oxidation-Reduction Potential (ORP) electrodes test for the overall availability of electrons in a medium, specifically the ratio of positive and negative ions in the solution. They are also sometimes referred to as Redox electrodes. ORP is the only practical method used to electronically monitor sanitizer effectiveness and it is also commonly tested in water, such as swimming pools and aquariums. ORP is expressed in millivolts (mV). -1000 mV to 1000mV is a common range for ORP tests. The pH value influences the ORP value significantly.

Storage and Maintenance

To ensure accurate measurements, it is important to keep the electrode clean. Contamination can cause inaccurate results and slow response times.



Model	STORP2	STORP1
Item Number	30038553	30038555
Temperature Range	0-100 °C	0-80 °C
Shaft Material	Glass	Plastic
Shaft Diameter	12 mm	12 mm
Shaft Length	120 mm	120 mm
Cable Length	1 m	1 m
Temperature Sensor	No	No
Connection	BNC	BNC
Zero Potential Value	86mV±15mV	86mV±15mV
Grade Difference	≥ 165mV	≥ 165mV
Cell Material	Platinum O-ring	Platinum Sequin
Internal Reference Type	Ag/AgCl	Ag/AgCl
Refillable/Non-refillable	Refillable	Non-refillable
Reference Junction Type	Annular Ceramic	Ceramic Pin
Refilling Reference Electrolyte	3M KCl	Gel Filled

Reference & Temperature Probes

Basic Principle of Reference Electrodes

A reference electrode provides a stable and known voltage needed for accurate electrochemical measurements. It works through a consistent half-cell reaction with metals like silver or mercury in solutions of fixed ion concentration. Common types are the silver/silver chloride (Ag/AgCl) and saturated calomel electrodes (SCE). This stable voltage acts as a baseline to measure the working electrode's potential in methods like potentiometry and voltammetry, ensuring precise and reliable results.

STREF1 is Silver/Silver Chloride (Ag/AgCl in Saturated KCl), which represents another type of reference electrode.

Storage and Maintenance

Maintenance of reference electrodes can help avoid stability problems and keep them in proper working condition.

Check that the reference electrode compartments are filled with electrolyte solution and the junction is not blocked.

Model	STREF1
Item Number	30059253
Reference system	Silver/Silver Chloride (Ag/AgCl)
Shaft Material	Glass
Shaft Diameter	12 mm
Shaft Length	110 mm
E vs. SHE (Standard Hydrogen Electrode) (V)	0.198
Connection	2mm Banana
Cable Length	1 m



Basic Principle of Temperature Compensation

Temperature compensation in pH electrodes adjusts measurements to correct for temperature effects on both the electrode's response and the solution's pH. This ensures accurate and consistent pH readings across different temperatures, providing reliable results in various conditions without errors caused by temperature changes.

OHAUS offers a standalone temperature probe, STTEMP30. It can be used in conjunction with Bench and Portable meters.

Model	STTEMP30
Item Number	83033970
Shaft Material	Stainless Steel
Shaft Length	120 mm
Temperature Range	0-100 °C
Connection	Cinch
Cable Length	1 m



Conductivity Electrodes

Basic Theory of Conductivity

Conductivity is measured in a wide range of industries and gives a readout of total ionic concentration within the sample. It is a rapid and inexpensive way of determining the ionic strength of a solution.

A basic conductivity cell consists of a pair of electrodes that are placed in a sample. The ratio of the distance between the electrodes (D) and their surface area (A) is known as the cell constant K: $K= D/A \text{ [cm}^{-1}\text{]}$

Calibration

Cell constants at time of manufacture are listed on many conductivity cells. It is recommended that you always determine the exact cell constant by using a calibration standard. Calibration is essential since the cell constant can vary by 10% or more from the nominal value and they do change over time. Once calibrated, they do not change quickly and do not require frequent calibration like a pH electrode. It is important to calibrate 25 °C or know the value of your calibration standard at different temperatures. The cell constant changes only if the surface of the electrode changes, for example through fingerprints, deposits, scratches or enclosed air bubbles.

Benefits of 4-Electrode Cells

- All have durable plastic bodies
- No error from cable resistance, allowing for longer cable lengths
- Minimum effect on accuracy from electrode polarization and contamination
- Wide measurement range
- Unaffected by deposits on cell surface

Model	STCON3	STCON3 IP67
Item Number	83033972	30468962
Measuring range	2 µS/cm - 200mS/cm	2 µS/cm - 200mS/cm
Temperature range	0 °C – 50°C	0 °C – 50°C
Cable Length	1 m	3m
Connector Type	Mini-DIN	CTW
Cell Material	4 rings stainless steel	4 rings stainless steel
Cell Constant	1.5 - 2.0 cm ⁻¹	1.5 - 2.0 cm ⁻¹
Shaft Material	Plastic	Plastic
Shaft Length	130 mm	130 mm
Shaft Diameter	14 mm	14 mm
Socket Diameter	20 mm	20 mm
Temperature probe	NTC 30 kΩ	NTC 30 kΩ
Description	Widest conductivity range	Widest conductivity range
Application	For lab and field applications	For lab and field applications
Feature	Removable guard	Removable guard



Conductivity Electrodes

Storage and Maintenance

The conductivity electrode should be stored in a clean and dry environment. They can be stored in deionized water in-between measurements. For storage overnight or longer, conductivity cells should be rinsed thoroughly in deionized water and stored dry.

If they become contaminated they should be cleaned. Refer to user guides for specific instructions for different electrode materials.

Precautions and Limitations

Do not expose the shaft to organic solvents when cleaning or when taking measurements.

1. Do not use the electrode outside the recommended temperature range.
2. Calibrate the electrode with standard solution for an accurate measurement.

Benefits of 2-Electrode Cells

- Available in glass, allows use in most samples
- best for ultra-pure water measurements
- Multiple cell materials available, platinum or stainless steel
- Different cells designed to measure multiple specific ranges
- Option for flow cell or flow-thru design



Model	STCON5	STCON7	STCON8 w chamber
Item Number	30681116	30080693	30681235
Measuring range	50 µS/cm-2 mS/cm	0.02 µS/cm - 200µS/cm	0.055-300µS/cm
Temperature range	0 °C – 80°C	0 °C – 100°C	0 °C – 80 °C
Cable Length	1 m	1 m	1m
Connection	Mini-DIN	Mini-DIN	Mini-DIN
Cell Material	2 Ring platinum	2 Ring 316L	2 Ring platinum
Cell Constant	1 cm ⁻¹ ± 0.2	0.1 cm ⁻¹ ±0.02	0.1 cm ⁻¹ ±0.02
Shaft Material	Glass	Steel	Glass
Shaft Length	155 mm	95 mm	155mm
Shaft Diameter	12 mm	12 mm	12 mm
Temperature probe	NTC 30 kΩ	NTC 30 kΩ	NTC 30 kΩ
Description	Standard conductivity range	Low conductivity range	Low ionic strength solutions, deionized water, and ultra pure water.
Application	For lab applications	For Boiler feed water, ultra-pure water	For ultra pure water applications
Feature	Chemical resistant glass body	Rugged Steel	Platinized glass/platinum
Other	N/A	N/A	Includes detachable glass chamber

Dissolved Oxygen Sensors

Basic Principle of Dissolved Oxygen (DO) Electrodes

There are three types of commonly used oxygen sensors: polarographic, galvanic and optical (luminescence) sensors.

STDO11 is a galvanic DO sensor and the simplest among the three electrodes. It produces its own electric current.

The cathode is silver and the anode is zinc. Oxygen passes through the membrane and is reduced at the cathode to increase the electrical signal (current) read by the electrode. As oxygen increases, the signal increases.

Galvanic sensors are active at all times and will degrade in storage as well as during use. They do not need to polarize (warm up) before calibration or measurement while polarographic electrodes take 15 minutes to several hours to warm up.

The STDO21 optical dissolved oxygen sensors measure the interaction between oxygen and certain luminescent dyes. These sensors are ideal for long-term monitoring applications due to their minimal maintenance requirements. STDO21 also does not require any warm-up time or stirring when taking a measurement. Over a long period of time, the dye degrades and the sensing element and membrane will need to be replaced, but this replacement is very infrequent compared to electrochemical sensor membrane replacement.

Storage and Maintenance

Carefully remove the protective bottle from the tip of the electrode by unscrewing the lid and removing the bottle. Remove the shorting plug from the connector and store in a safe place. Be careful because the protective bottle lid is tightly fit on the electrode.

STDO11 should be stored in a moist environment to keep the membrane from drying out, but do not store directly in water.

Model	STDO11	STDO21-1	STDO21-5
Item Number	30031639	30378544	30378545
Temperature Range	0-50 °C	0 °C – 60 °C	0 °C – 60 °C
Measurement Range	0-200%	0.00 – 20.0 mg/L(ppm)	0.00 – 20.0 mg/L(ppm)
Methodology	Galvanic	Optical	Optical
Shaft Material	Plastic	Plastic	Plastic
Shaft Length	120 mm	120 mm	120 mm
Shaft Diameter	12 mm	16 mm	16 mm
Connection	BNC	Mini-DIN	Mini-DIN
Cable Length	1.1 m	1 m	5 m



ORP/Conductivity/DO Electrodes Selector Guide

OHAUS Starter™ series electrochemistry instruments include ORP / Conductivity / DO electrodes that support advanced sample analysis, OHAUS launched several electrodes including glass and plastic shaft ORP electrodes, STCON3 with wide conductivity measuring range, STCON8 especially for low conductivity samples, galvanic method DO sensor STDO11 and optical method DO sensor STDO21.

Application	Sample Type	Conductivity Sensor	DO Sensor	ORP Sensor
Surface Waters	Rain, lake / river water	STCON3	STDO11 / STDO21	STORP1
Processing Monitoring	Drinking water, tap water	STCON7 / STCON8	STDO11	STORP1
Quality Monitoring	Swimming pool, circulating cooling water, aquaculture water	STCON3 / STCON5	STDO21	STORP1
Low ionic strength solution	Ultra-pure water, boiler feed water, distilled water	STCON8 / w chamber	STDO21	-
High Salinity Waters	Wastewater, seawater	STCON3	STDO11	STORP2
Fermentation	Biological fermentation broth	STCON3	STDO11	STORP2
Education	Chemical reaction solution	STCON3	STDO11	STORP2



Accessories

pH Buffer and Conductivity Standard Solution

P/N	pH Buffers	P/N	Cond. Standard Solution
30100424	Buffer pH1.68 250ml	30100442	Standard Conduct 84µs/cm 250ml
30100425	Buffer pH4.01 250ml	30100443	Standard Conduct 1413µs/cm 250ml
30100426	Buffer pH6.86 250ml	30100444	Standard Conduct 12.88mS/cm 250ml
30100427	Buffer pH7.00 250ml	30393269	Cond standard 500µs/cm, 250ml
30100428	Buffer pH9.18 250ml		
30100429	Buffer pH10.01 250ml		
30100440	Buffer pH12.45 250ml		



Reference Refilling Electrolyte (30059255)

3M KCl saturated with AgCl reference fill solution for Ag/AgCl single junction electrodes.

Electrode Protection Solutions (30059256)

After cleaning or when the electrode is not in use, always keep it in storage solution. To ensure proper conditions for pH electrodes, we offer pH electrode protection solution (3M KCl, 125ml).

Compact Stirrer

The mini magnetic stirrer can thoroughly mix sample solutions to achieve more accurate and stable test results.

Model	AS20 compact stirrer
Item number	30661425
Speed range	60-1500 rpm
Stirring bar	20 – 30 mm
Maximum capacity	1 liter / 1.5 kg



Protective Sleeve

Protect the large bulb of electrode from fragment (Bundle with large bulb electrodes).

Model	Kit Protective Sleeve, PH Electrode
Item number	31129889



STARTER™ Electrodes

Model Selection

Parameter	Type	Benchtop Meter						Portable Meter		
		ST5000	AB41PH	AB33M1	AB33PH	AB23PH	ST2200	ST400M	ST400	ST300
pH	ST420	•	•	•	•	•	•	•	•	•
	ST410	•	•	•	•	•	•	•	•	•
	ST350	•	•	•	•	•	•	•	•	•
	ST322	•	•	•	•	•	•	•	•	•
	ST320 IP67							•	•	
	ST320	•	•	•	•	•	•	•	•	•
	ST310	•	•	•	•	•	•	•	•	•
	STSURF	•	•	•	•	•	•	•	•	•
	STPURE	•	•	•	•	•	•	•	•	•
	STMICRO8	•	•	•	•	•	•	•	•	•
	STMICRO5	•	•	•	•	•	•	•	•	•
	ST280	•	•	•	•	•	•	•	•	•
	ST272	•	•	•	•	•	•	•	•	•
	ST270	•	•	•	•	•	•	•	•	•
ST260	•	•	•	•	•	•	•	•	•	
ST230	•	•	•	•	•	•	•	•	•	
ST210	•	•	•	•	•	•	•	•	•	
ORP	STORP1	•	•	•	•	•	•	•	•	•
	STORP2	•	•	•	•	•	•	•	•	•
Reference	STREF1	•	•	•	•	•	•	•	•	
Temperature	STTEMP30	•	•	•	•	•	•	•	•	

Parameter	Type	Benchtop Meter			Portable Meter			
		AB33M1	AB33EC	AB23EC	ST400M	ST300C	ST400D	ST300D
EC	STCON8 w/ chamber	•	•	•	•	•	•	•
	STCON8	•	•	•	•	•	•	•
	STCON7	•	•	•	•	•	•	•
	STCON5	•	•	•	•	•	•	•
	STCON3 IP67				•			
	STCON3	•	•	•	•	•	•	•
DO	STDO21 5m						•	
	STDO21 1m						•	
	STDO11							•
Temperature	STTEMP30	•			•			•



OHAUS Corporation

Headquartered in Parsippany, NJ, OHAUS Corporation manufactures an extensive line of balances and scales, lab equipment and lab instruments that meet the weighing, sample processing and measurement needs of multiple industries.

We are a global leader in the laboratory, industrial and education markets, as well as a host of specialty markets, including the food preparation, pharmacy and jewelry industries. An ISO 9001:2015 manufacturer, OHAUS lab balances, industrial scales, lab equipment and lab instruments are precise, reliable and affordable, and backed by industry-leading customer support.

80777185_A 20260323 © Copyright OHAUS Corporation

OHAUS CORPORATION

Tel: 800.672.7722
973.377.9000
Fax: 973.944.7177

www.ohaus.com

The management system governing the manufacture of this product is ISO 9001:2015 certified.



Ingeniously Practical