



The BradCommunications™ Direct-Link™ network interfaces provide simple use and fast implementation in connecting desktop computer with MPI/S7 protocols up to 12 Mbps.

22 Dec. 06  
DW200593

### Features

- **New!** MPI Slave for Siemens S7/200 PLC
- RoHS compliant
- Ready to plug, no hardware setting
- Manage Profibus client S7/MPI (console outlet) protocol for Siemens S7-300 or S7-400 PLC
- Profibus speed: 9.6 Kbps up to 12 Mbps
- Universal PCI card with both 3.3V and 5V signaling (PCI-X compatible)
- Software Interfaces:
  - OPC Server (Data Access v1.0a, v2.05 and 3.0)
  - Wonderware DAServer
  - Wonderware I/O Server (SuiteLink, FastDDE)
  - ActiveX Control
  - DLL library 32-bits

### Supported OS

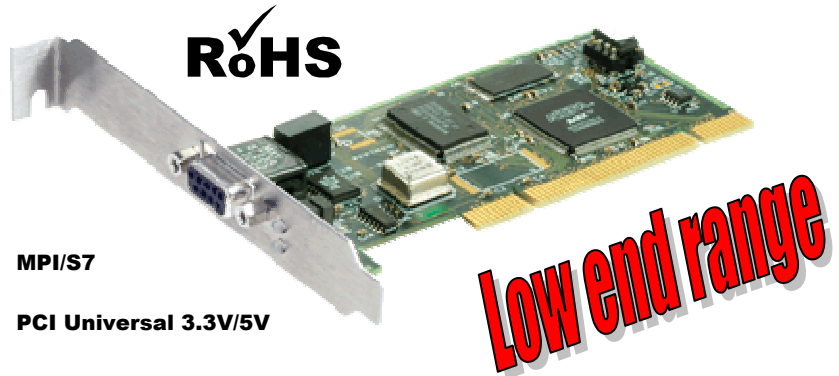
- Windows XP / 2000 SP3 / NT4 SP6



Woodhead is a member of PTO (PROFIBUS Trade Organization), PNO (PROFIBUS Nutzerorganisation e. V.) and France Profibus.

## Direct-Link™ PCU100PFB

Easy connection to S7/MPI network



MPI/S7

PCI Universal 3.3V/5V



### Description

Direct-Link™ is a low range of automation components for industrial communication. It includes a variety of products such as diagnostic tools, intelligent connectors, tunneling gateways, dedicated fieldbus cards, and software drivers for industrial networks.

Simple as they are affordable, Direct-Link™ products allow you to acquire the equipment to develop your architectures and industrial applications at a lower cost.

Direct-Link™ is characterized by its simple use and fast implementation. The solutions are modular and scalable. Moreover, the products are designed to be easily embedded in computerized systems and are available in a wide selection of form factors.

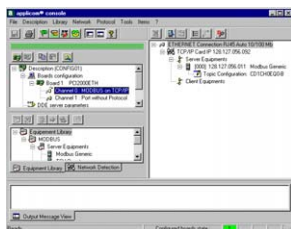
Particularly, Direct-Link™ PCU100PFB product is based on a non-intelligent 12 Mbps interface card that is especially designed to communicate with Siemens S7-300 or S7-400 controllers set on a Profibus network. Direct-Link™ PCU100PFB suits perfectly to applications requiring few CPU resources (for more powerful data through and large application, see applicom® product ranges).

## Direct-Link™ PCU100PFB

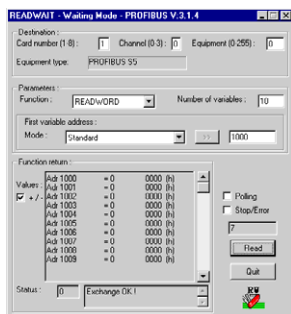


### Software tools

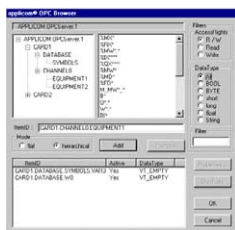
The core of Direct-Link™ PC Network Interface cards lies in effective software tools enabling fast integration of industrial communication into your applications.



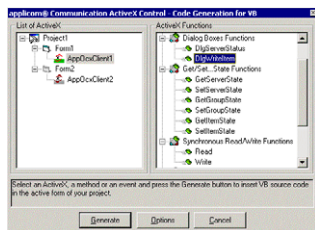
Configuration and diagnostics



Testing tools



OPC Browser



ActiveX Control

### Technical data

<b>Unit</b>	PCI rev 2.2, 32-bit, 33 MHz, PCI Universal 3.3V/5V keying, PCI-X compatible
<b>Network Asic</b>	Siemens ASPC2
<b>Memory</b>	SDRAM: 128 Kbytes DPRAM: 512 Kbytes
<b>Dimensions (L x W)</b>	120mm x 55mm (4.73" x 2.17") without bracket
<b>Consumption</b>	1 W (5V)
<b>Operating T°</b>	0° C (32° F) up to +65° C (149° F)
<b>Storage T°</b>	-40° C (-40° F) up to +85° C (185° F)
<b>EMC Compliance</b>	EN55022 Class B, EN61000-6-2, EN61000-3-2, EN61000-3-3
<b>RoHS</b>	Yes
<b>Humidity</b>	5 to 95% non condensing

### 1 Profibus port

<b>Port type</b>	Profibus port (EN 50170)
<b>Connector type</b>	9-pin Sub-D female
<b>Electrical Interface</b>	RS485 with galvanic insulation 500 V
<b>Speed</b>	9600 bps to 12 Mbps
<b>LED indicators</b>	2 bicolor leds: Bus fault, Communication status

### Supported protocols

Protocols <sup>(1)</sup>	Equipments
<b>MPI/S7 Master</b>	Siemens Simatic S7-300, S7-400
<b>MPI Slave</b>	Siemens S7-200

(1) - Up to 40 Simatic® S7 devices supported

### Ordering information

Part Number	Description
<b>DRL-MPI-PCU</b>	Direct-Link™ Profibus 12 Mb card, PCI 3.3V / 5V (PCI-X compatible)