

PLEASE CHECK WWW.MOLEX.COM FOR LATEST PART INFORMATION

Part Number: **0988171028**
Status: **Active**
Overview: NSCC - New Standard Casing Contact
Description: NSCC Single Part, Unsealed, 1.50mm, Female Housing, 3.33mm Pitch NSCC, Wire-to-Wire, 2 Circuits, Gray

Documents:

3D Model	Application Specification 988210001-PS-CH-001 (PDF)
Drawing (PDF)	Packaging Specification PK-31301-635-001 (PDF)
Product Specification PS-98821-001-001 (PDF)	RoHS Certificate of Compliance (PDF)
Application Specification 988210001-AS-CH-001 (PDF)	

Application tooling part link

Application Tooling Part Link 63813-3800

General

Product Family	Crimp Housings
Series	98817
Application	Power, Wire-to-Wire
Overview	NSCC - New Standard Casing Contact
Product Name	NSCC
Taxonomy	Connector Housings
UPC	822348761371

Physical

Breakaway	No
Circuits (maximum)	2
Circuits Detail	2 x 1.5mm female terminals
Color - Resin	Gray
Gender	Receptacle
Glow-Wire Capable	No
Keying to Mating Part	Yes
Lock to Mating Part	Yes
Material - Resin	Polyester
Net Weight	1.640/g
Number of Rows	1
Packaging Type	Carton
Panel Mount	No
Pitch - Mating Interface	3.33mm
Pitch - Termination Interface	3.33mm
Polarized to Mating Part	Yes
Ports	1
Temperature Range - Operating	-40° to +100°C

Electrical

Current - Maximum per Contact 10.0A

Solder Process Data

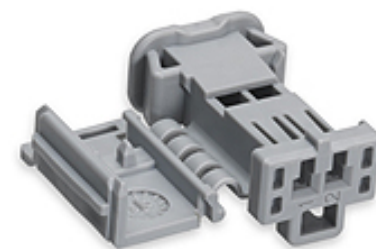
Lead-free Process Capability N/A

Material Info

Engineering Number 10008328

Reference - Drawing Numbers

Application Specification 988210001-AS-CH-001, 988210001-PS-CH-001
 Packaging Specification PK-31301-635-001



Series image - Reference only

**EU ELV
Compliant**

**EU RoHS
Compliant**

REACH SVHC
Not Contained Per -
D(2022)4187-DC (10
June 2022)

**Halogen-Free
Status**

Not Relevant

For more information, please visit [Contact US](#)

China ROHS	Not Relevant
ELV	Compliant
RoHS Phthalates	Not Contained

China RoHS

Search Parts in this Series

[98817](#) Series

Mates With

[988221028](#) Male Receptacle Housing

Use With

Female Terminal [NSCC 988971109](#) ,
[988971119](#) , [988971129](#) or FCI Female
 Terminal 1.5 Sicma 3

Application Tooling | FAQ

Tooling specifications and manuals are found by selecting the products below. Crimp Height Specifications are then contained in the Application Tooling Specification document.

Global

Description	Product #
Extractor Tool for Unsealed Receptacle Connectors	638133800

This document was generated on 09/09/2022

PLEASE CHECK WWW.MOLEX.COM FOR LATEST PART INFORMATION