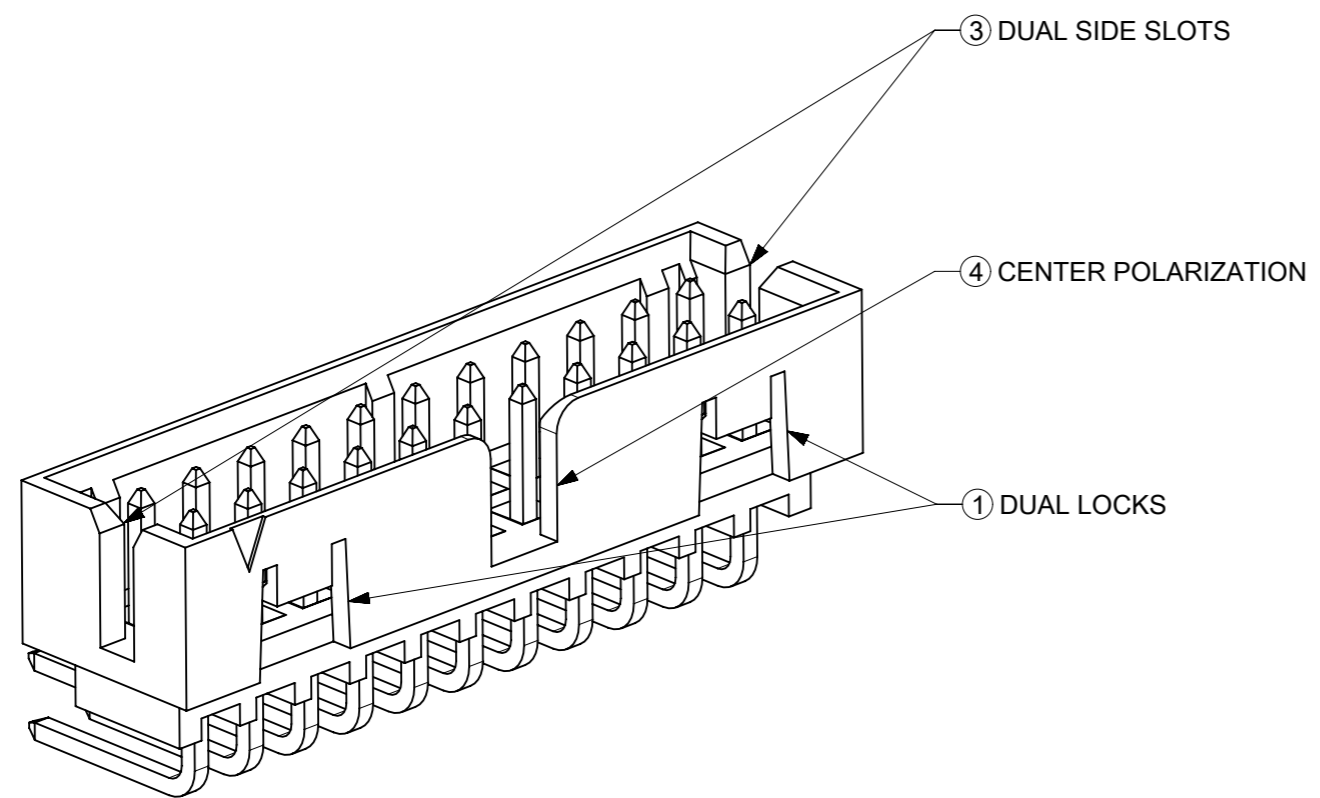
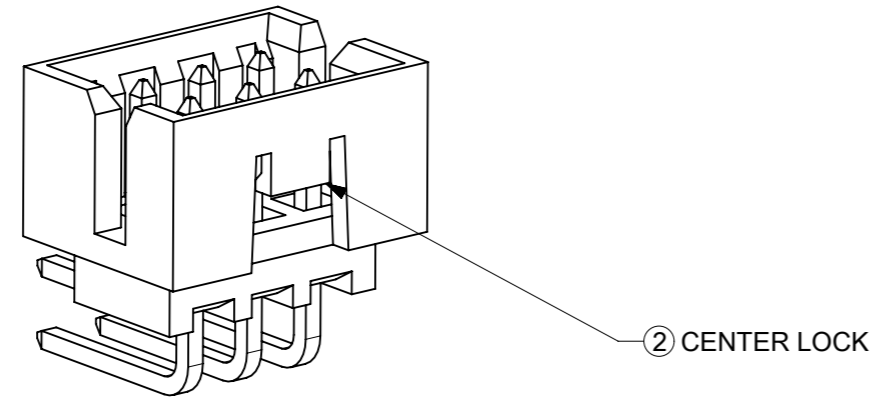


FEATURES SELECTION GUIDE

| CIRCUIT SIZE | FEATURES | | | | SHEET NO |
|--------------|----------------|----------|-------------------|-----------------------|----------|
| | FRICTION LOCKS | | ③ DUAL SIDE SLOTS | ④ CENTER POLARIZATION | |
| | ① DUAL | ② CENTER | | | |
| 4 TO 6 | N.A | N.A | YES | N.A | 2 - 3 |
| | N.A | YES | YES | N.A | |
| 8 TO 12 | N.A | N.A | YES | YES | 4 - 5 |
| | N.A | YES | YES | N.A | |
| 14 TO 50 | YES | N.A | YES | YES | 6 - 9 |
| | N.A | N.A | YES | YES | |

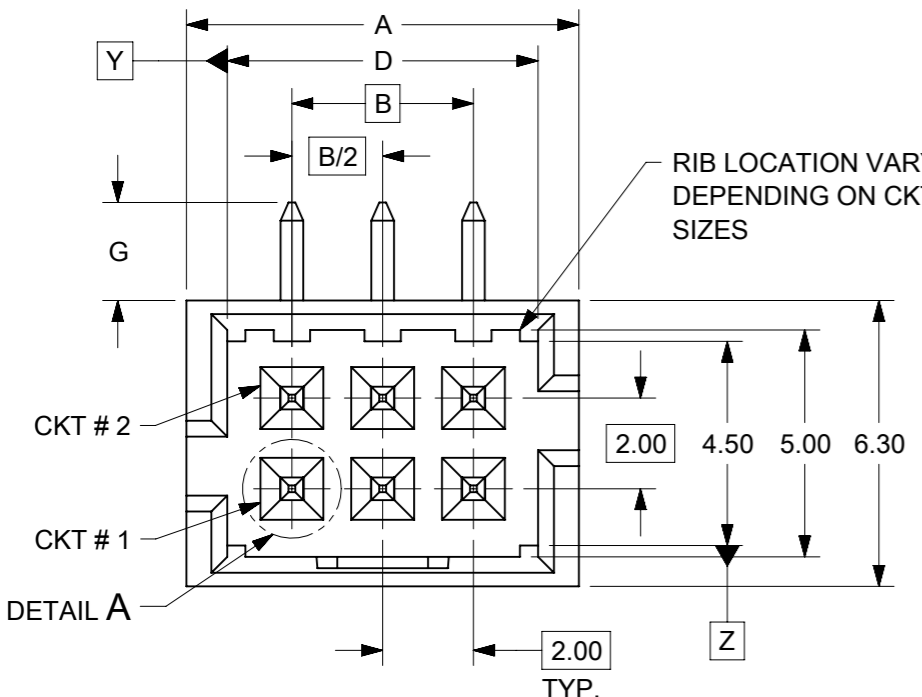


PACKAGING SPECIFICATION TABLE

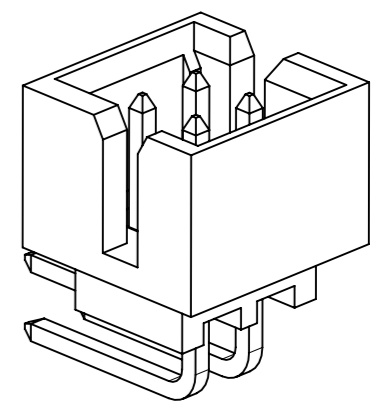
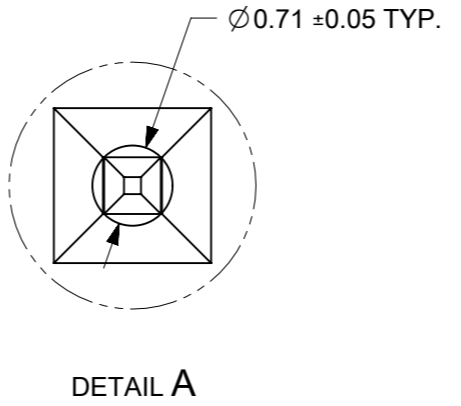
| | |
|--|--------------|
| TAPE AND REEL PACKAGING | PK-87831-300 |
| TUBE STANDARD PACKAGING | PK-87831-001 |
| TUBE NON-STANDARD PACKAGING FOR: 87833-0861 87833-1420 | PK-87831-002 |

THIS DRAWING CONTAINS INFORMATION THAT IS PROPRIETARY TO MOLEX ELECTRONIC TECHNOLOGIES, LLC AND SHOULD NOT BE USED WITHOUT WRITTEN PERMISSION

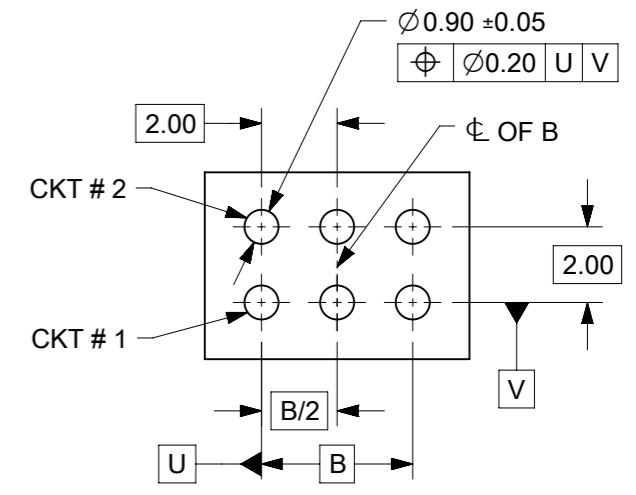
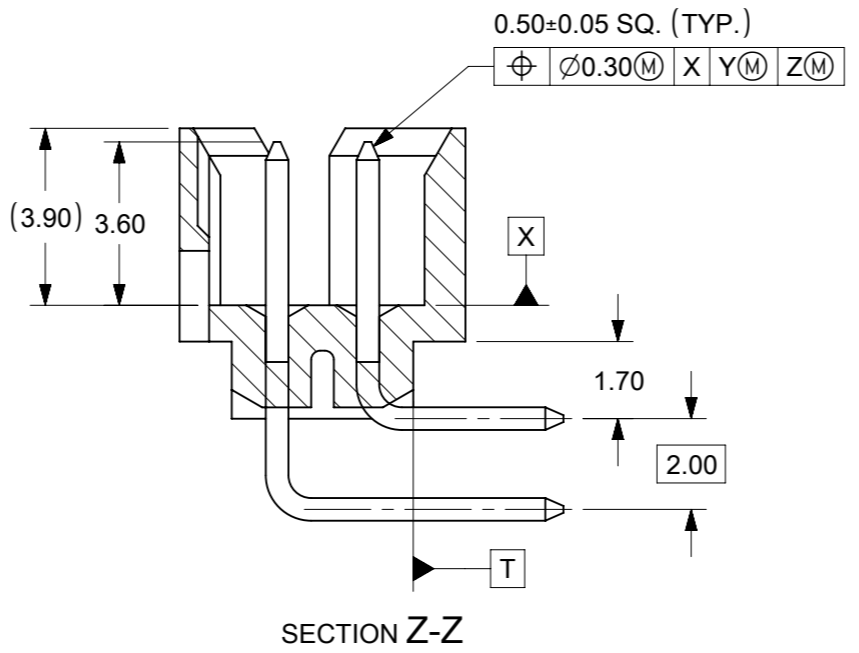
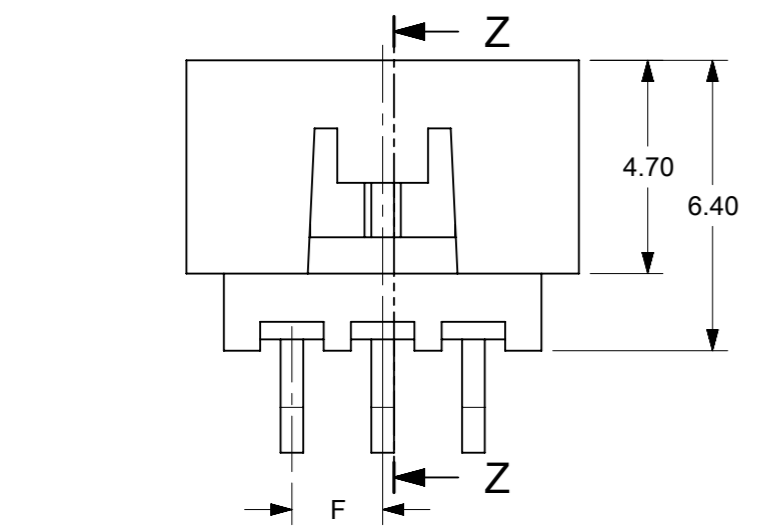
| | | | | | | | | |
|---|------------|--|-----------------|------------------------|--------------------------|-----------------|----------------|---|
| EC NO: 718010 DRWN: DANUSA CHK'D: DANUSA REV APPR: MIRAMAKRISHNA | 2022/08/26 | GENERAL TOLERANCES (UNLESS SPECIFIED) | DIMENSION UNITS | | SCALE | | | |
| | 2022/09/19 | | MM | INCH | MM | NTS | | |
| | 2022/09/19 | | 4 PLACES ± | ± | DRWN BY | DATE | | MILLIGRID, 2MM PITCH SHROUDED HEADER R/A, THROUGH HOLE |
| | | | 3 PLACES ± | ± | GMENARLY | 2015/09/29 | | |
| | | | 2 PLACES ± 0.2 | ± | CHK'D BY | DATE | | |
| | 1 PLACES ± | ± | CGOH | 2015/10/30 | | | | |
| | 0 PLACES ± | ± | APPR BY | DATE | | | | |
| | | ANGULAR TOL = 3.0 | KHLIM | 2015/11/03 | PRODUCT CUSTOMER DRAWING | | | |
| | | DRAFT WHERE APPLICABLE MUST REMAIN WITHIN DIMENSIONS | DRAWING SIZE | THIRD ANGLE PROJECTION | SERIES | MATERIAL NUMBER | CUSTOMER | |
| | | | A3 | | 87833 | SEE TABLE | GENERAL MARKET | |
| | | | | | DOCUMENT NUMBER | DOC TYPE | DOC PART | SHEET NUMBER |
| | | | | | SD-87833-0001 | PSD | 001 | 1 OF 9 |



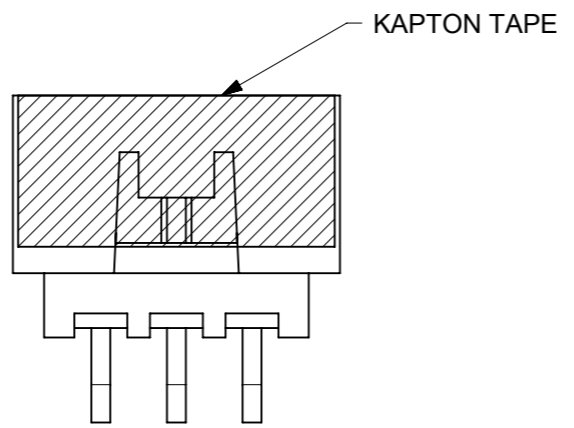
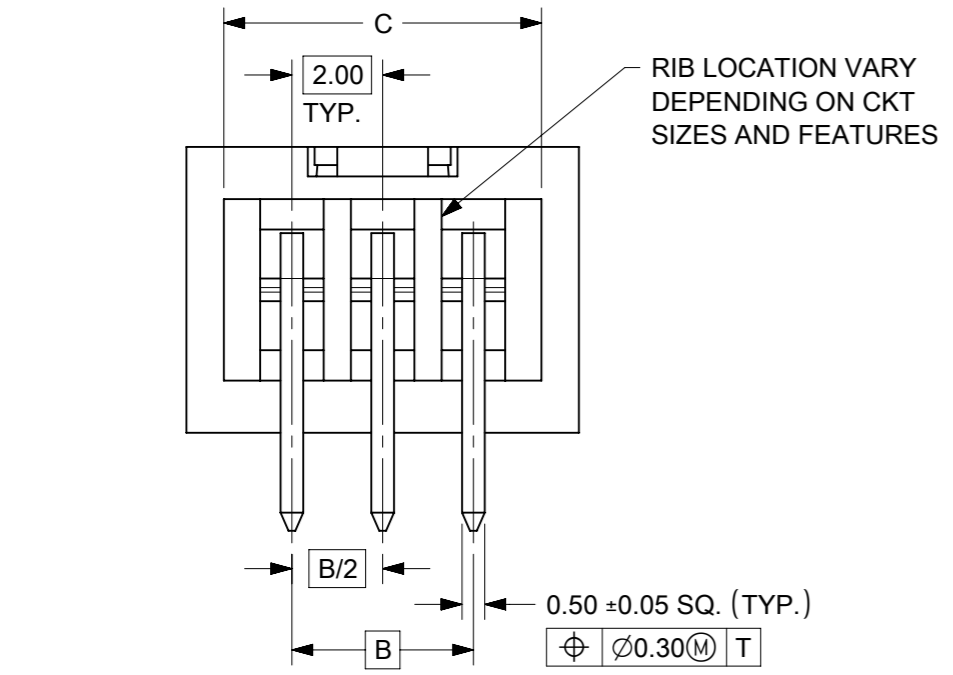
4 TO 6 CIRCUITS



ISO VIEW OF HEADER
DUAL SIDE SLOTS



RECOMMENDED PCB LAYOUT



- NOTES:
1. MATERIALS:
HOUSING: 30% GF, NYLON, UL94V-0, COLOR: BLACK.
PIN: 0.50mm SQ. PHOSPHOR BRONZE.
 2. FINISHES: REFER TO PLATING OPTIONS.
 3. PRODUCT SPECIFICATION: PS-87831-027
 4. PACKAGING SPECIFICATION: SEE PACKAGING SPECS TABLE ON SHEET 1
 5. MATES WITH: A. MOLEX CRIMP RECEPTACLE HOUSING: 51110 SERIES AND CRIMP TERMINAL: 50394 SERIES.
B. MOLEX 2MM MILLIGRID DUAL ROW IDT: 87568 SERIES.
C. MOLEX 2MM MILLIGRID DUAL ROW RECEPTACLE: 79107 (GOLD PLATED), 78787 (TIN PLATED)
 6. FOR ILLUSTRATION PURPOSE, 6 CIRCUITS HEADER IS SHOWN.

THIS DRAWING CONTAINS INFORMATION THAT IS PROPRIETARY TO MOLEX ELECTRONIC TECHNOLOGIES, LLC AND SHOULD NOT BE USED WITHOUT WRITTEN PERMISSION

| | | | | | | | | | |
|---|------------|--|---------|-----------------|------------------------|--------------------------|---|----------------|--------------|
| EC NO: 718010 DRWN: DANUSA CHK'D: DANUSA REV APPR: MIRAMAKRISHNA | 2022/08/26 | GENERAL TOLERANCES (UNLESS SPECIFIED) | | DIMENSION UNITS | SCALE | | | | |
| | 2022/09/19 | MM | INCH | MM | NTS | | | | |
| | 2022/09/19 | 4 PLACES ± | ± | DRWN BY | DATE | | MILLIGRID, 2MM PITCH SHROUDED HEADER R/A, THROUGH HOLE | | |
| | | 3 PLACES ± | ± | GMENARLY | 2015/09/29 | | | | |
| | | 2 PLACES ± 0.2 | ± | CHK'D BY | DATE | | | | |
| | 1 PLACES ± | ± | CGOH | 2015/10/30 | | | | | |
| | 0 PLACES ± | ± | APPR BY | DATE | | | | | |
| | | ANGULAR TOL = 3.0 | | KHLIM | 2015/11/03 | PRODUCT CUSTOMER DRAWING | | | |
| | | DRAFT WHERE APPLICABLE MUST REMAIN WITHIN DIMENSIONS | | DRAWING SIZE | THIRD ANGLE PROJECTION | SERIES | MATERIAL NUMBER | CUSTOMER | |
| A13 | | | | A3 | | 87833 | SEE TABLE | GENERAL MARKET | |
| | | | | | | DOCUMENT NUMBER | DOC TYPE | DOC PART | SHEET NUMBER |
| | | | | | | SD-87833-0001 | PSD | 001 | 2 OF 9 |


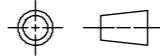
4 TO 6 CIRCUITS

| CKT SIZE | ASSY. P/N WITHOUT KAPTON IN TUBE | ASSY. P/N WITH KAPTON IN TUBE | ASSY. P/N WITH KAPTON IN T&R | PLATING OPTIONS | FRICTION LOCKS | | DUAL SIDE SLOTS | CENTER POLARIZATION | DIMENSION | | | | | | |
|----------|----------------------------------|-------------------------------|------------------------------|-----------------|----------------|--------|-----------------|---------------------|-----------|------|------|------|-----|-----|-----------------|
| | | | | | DUAL | CENTER | | | A | B | C | D | E | F | G (SOLDER TAIL) |
| 4 | 87833-0419 | N.A | N.A | 1 | N.A | N.A | YES | N.A | 6.65 | 2.00 | 5.00 | 4.85 | N.A | N.A | 2.16 |
| | 87833-0420 | N.A | N.A | 2 | | | | | | | | | | | |
| | 87833-0421 | N.A | N.A | 3 | | | | | | | | | | | |
| | 87833-5920 | N.A | N.A | 2 | | | | | | | | | | | |
| | 87833-0431 | 87833-0441 | 87833-0451 | 2 | | | | | | | | | | | |
| | 87833-0432 | N.A | N.A | 3 | | | | | | | | | | | |
| | 87833-0461 | N.A | N.A | 2 | | | | | | | | | | | |
| 6 | 87833-0619 | N.A | N.A | 1 | N.A | N.A | YES | N.A | 8.65 | 4.00 | 7.00 | 6.85 | N.A | N.A | 2.16 |
| | 87833-0620 | N.A | 87833-0626 | 2 | | | | | | | | | | | |
| | 87833-0621 | N.A | N.A | 3 | | | | | | | | | | | |
| | 87833-6420 | N.A | N.A | 2 | | | | | | | | | | | |
| | 87833-0631 | 87833-0641 | 87833-0651 | 2 | | | | | | | | | | | |
| | 87833-0632 | N.A | N.A | 3 | | | | | | | | | | | |
| | 87833-0661 | N.A | N.A | 2 | | | | | | | | | | | |
| | 87833-0624 | N.A | N.A | 2 | | | | | | | | | | | |
| | 87833-0625 | N.A | N.A | 3 | | | | | | | | | | | |

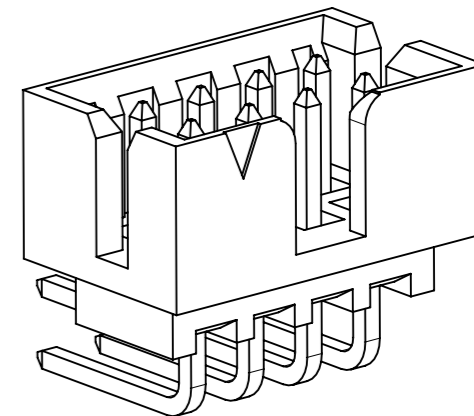
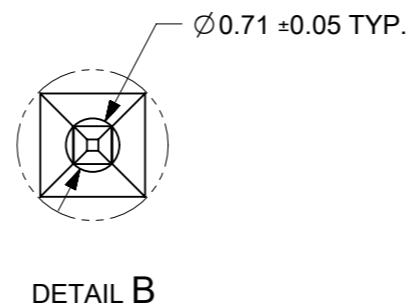
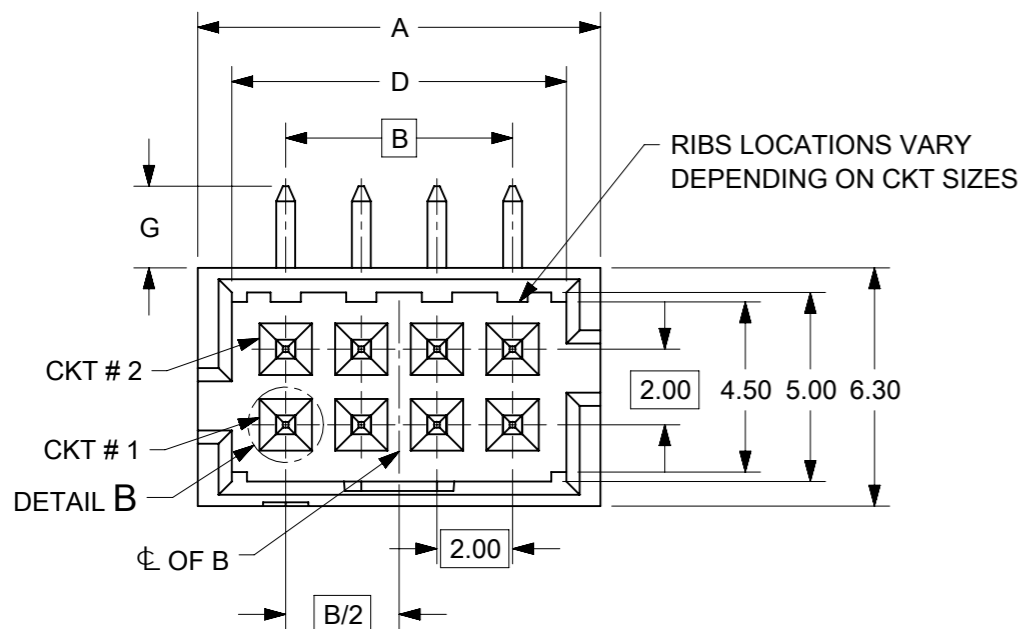
PLATING OPTIONS:

- 1 - 0.05-0.13µm/2-5µin GOLD IN CONTACT AREA AND
1.88µm/75µin MIN. MATTE TIN IN SOLDER TAIL AREA OVER
1.27µm/50µin MIN. NICKEL OVERALL.
- 2 - 0.38µm/15µin MIN. GOLD IN CONTACT AREA AND
1.88µm/75µin MIN. MATTE TIN IN SOLDER TAIL AREA OVER
1.27µm/50µin MIN. NICKEL OVERALL.
- 3 - 0.76µm/30µin MIN. GOLD IN CONTACT AREA AND
1.88µm/75µin MIN. MATTE TIN IN SOLDER TAIL AREA OVER
1.27µm/50µin MIN. NICKEL OVERALL.

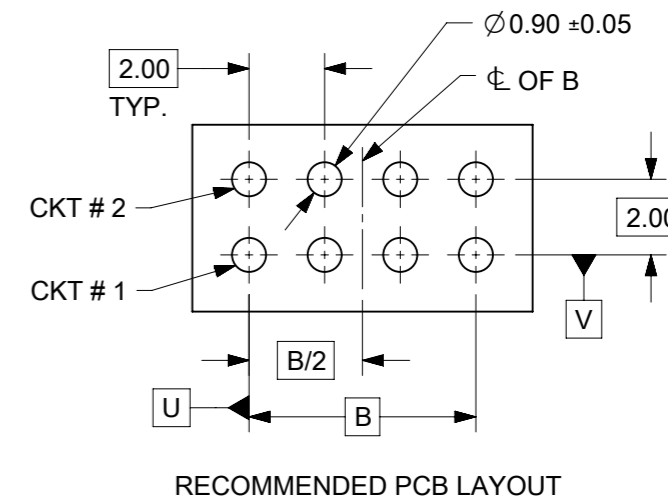
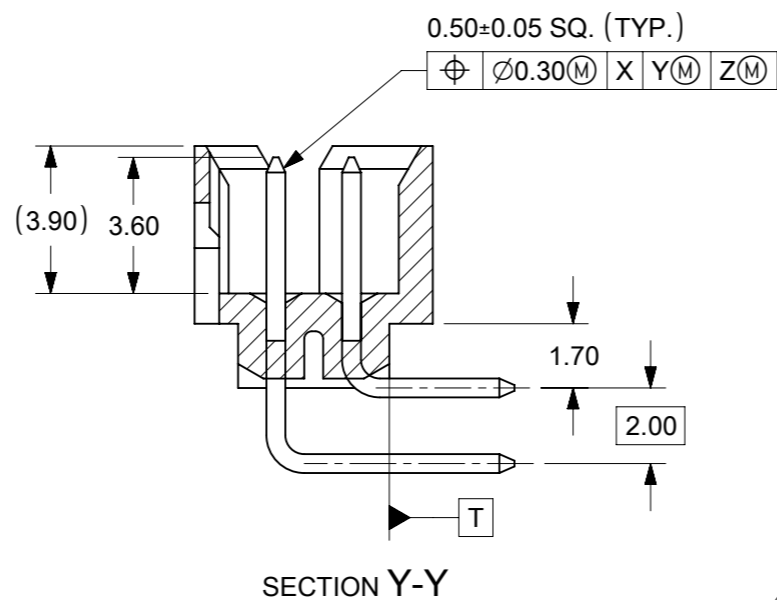
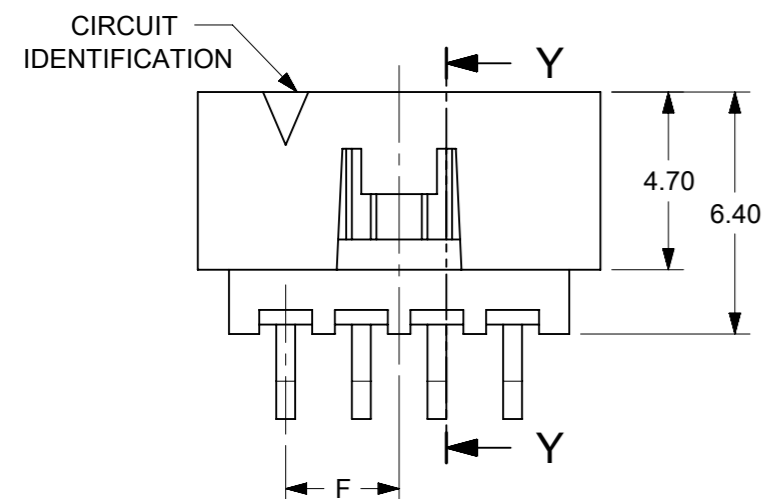
THIS DRAWING CONTAINS INFORMATION THAT IS PROPRIETARY TO MOLEX ELECTRONIC TECHNOLOGIES, LLC AND SHOULD NOT BE USED WITHOUT WRITTEN PERMISSION

| | | | | | | | | |
|---|------------|--|--------------|---|-----------------|---|---|--------------|
| EC NO: 718010 DRWN: DANUSA CHK'D: DANUSA REV APPR: MIRAMAKRISHNA | 2022/08/26 | GENERAL TOLERANCES (UNLESS SPECIFIED) | | DIMENSION UNITS | SCALE |  | | |
| | 2022/09/19 | MM | INCH | MM | NTS | | | |
| | 2022/09/19 | 4 PLACES ± | ± | DRWN BY | DATE | | MILLIGRID, 2MM PITCH SHROUDED HEADER R/A, THROUGH HOLE | |
| | | 3 PLACES ± | ± | GMENARLY | 2015/09/29 | | | |
| | | 2 PLACES ± 0.2 | ± | CHK'D BY | DATE | | | |
| | | 1 PLACES ± | ± | CGOH | 2015/10/30 | | | |
| | 0 PLACES ± | ± | APPR BY | DATE | | | | |
| | | | KHLIM | 2015/11/03 | | | | |
| | | ANGULAR TOL = 3.0 | DRAWING SIZE | THIRD ANGLE PROJECTION | SERIES | MATERIAL NUMBER | CUSTOMER | |
| | | DRAFT WHERE APPLICABLE MUST REMAIN WITHIN DIMENSIONS | A3 |  | 87833 | SEE TABLE | GENERAL MARKET | |
| RELEASE STATUS | P1 | RELEASE DATE | 2022/09/19 | 07:59:04 | DOCUMENT NUMBER | DOC TYPE | DOC PART | SHEET NUMBER |
| | | | | | SD-87833-0001 | PSD | 001 | 3 OF 9 |

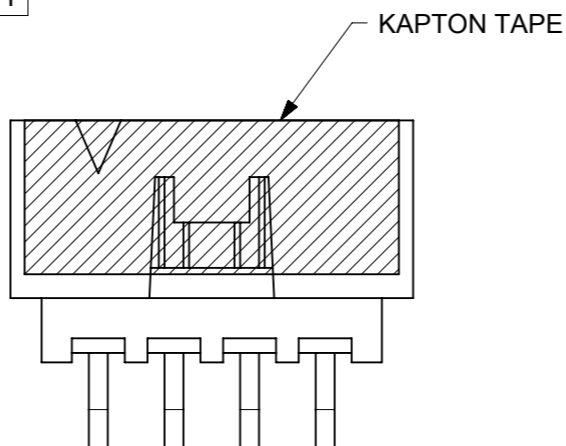
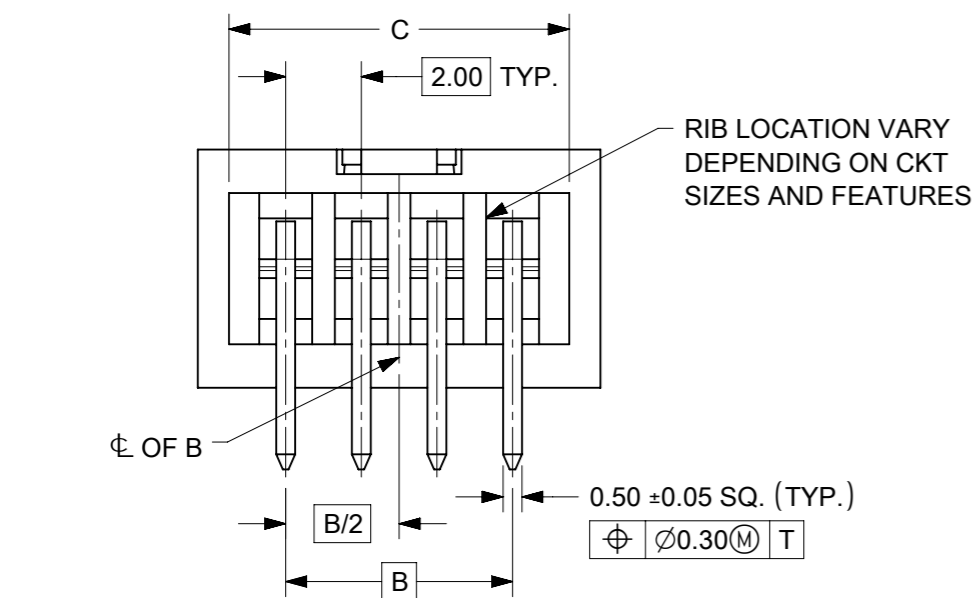
8 TO 12 CIRCUITS



ISO VIEW OF HEADER WITH CENTER POLARIZATION AND DUAL SIDE SLOTS



RECOMMENDED PCB LAYOUT



NOTES:

- MATERIALS:**
HOUSING: 30% GF, NYLON, UL94V-0, COLOR: BLACK
PIN: 0.50mm SQ. PHOSPHOR BRONZE.
- FINISHES:** REFER TO PLATING OPTIONS.
- PRODUCT SPECIFICATION:** PS-87831-027
- PACKAGING SPECIFICATION:** SEE PACKAGING SPECS TABLE ON SHEET 1
- MATES WITH:** A. MOLEX CRIMP RECEPTACLE HOUSING: 51110 SERIES AND CRIMP TERMINAL: 50394 SERIES.
B. MOLEX 2mm MILLIGRID DUAL ROW IDT: 87568 SERIES.
C. MOLEX 2mm MILLIGRID DUAL ROW RECEPTACLE: 79107 (GOLD PLATED), 78787 (TIN PLATED)
- FOR ILLUSTRATION PURPOSE, 8 CIRCUIT HEADER IS SHOWN.

THIS DRAWING CONTAINS INFORMATION THAT IS PROPRIETARY TO MOLEX ELECTRONIC TECHNOLOGIES, LLC AND SHOULD NOT BE USED WITHOUT WRITTEN PERMISSION

| | | | | | | | |
|---|------------|--|------|-----------------|------------------------|-----------------|------------|
| EC NO: 718010 DRWN: DANUSA CHK'D: DANUSA APPR: MIRAMAKRISHNA | 2022/08/26 | GENERAL TOLERANCES (UNLESS SPECIFIED) | | DIMENSION UNITS | SCALE | | |
| | 2022/09/19 | MM | INCH | MM | NTS | | |
| | 2022/09/19 | 4 PLACES | ± | ± | DRWN BY | | DATE |
| | | 3 PLACES | ± | ± | GMENARLY | | 2015/09/29 |
| | | 2 PLACES | ± | 0.2 | ± | | CHK'D BY |
| | 1 PLACES | ± | ± | ± | CGOH | 2015/10/30 | |
| | 0 PLACES | ± | ± | ± | APPR BY | DATE | |
| | | | | | KHLIM | 2015/11/03 | |
| | | ANGULAR TOL = 3.0 | | DRAWING SIZE | THIRD ANGLE PROJECTION | | |
| | | DRAFT WHERE APPLICABLE MUST REMAIN WITHIN DIMENSIONS | | A3 | | | |
| | | | | | | SERIES | |
| | | | | | | MATERIAL NUMBER | |
| | | | | | | CUSTOMER | |
| | | | | | | 87833 | |
| | | | | | | SEE TABLE | |
| | | | | | | GENERAL MARKET | |
| | | | | | | DOCUMENT NUMBER | |
| | | | | | | SD-87833-0001 | |
| | | | | | | DOC TYPE | |
| | | | | | | PSD | |
| | | | | | | DOC PART | |
| | | | | | | 001 | |
| | | | | | | SHEET NUMBER | |
| | | | | | | 4 OF 9 | |


8 TO 12 CIRCUITS

| CKT SIZE | ASSY. P/N WITHOUT KAPTON IN TUBE | ASSY. P/N WITH KAPTON IN TUBE | ASSY. P/N WITH KAPTON IN T&R | PLATING OPTIONS | FRICTION LOCKS | | DUAL SIDE SLOTS | CENTER POLARIZATION | DIMENSION | | | | | | |
|----------|----------------------------------|-------------------------------|------------------------------|-----------------|----------------|--------|-----------------|---------------------|-----------|-------|-------|-------|-----|-----|-----------------|
| | | | | | DUAL | CENTER | | | A | B | C | D | E | F | G (SOLDER TAIL) |
| 8 | 87833-0819 | N.A | N.A | 1 | N.A | N.A | YES | YES | 10.65 | 6.00 | 9.00 | 8.85 | N.A | N.A | 2.16 |
| | 87833-0820 | N.A | N.A | 2 | | | | | | | | | | | |
| | 87833-0821 | N.A | 87833-7621 | 3 | | | | | | | | | | | |
| | 87833-6320 | N.A | N.A | 2 | | | | | | | | | | | |
| | 87833-6321 | N.A | N.A | 3 | | | | | | | | | | | |
| | 87833-0831 | 87833-0841 | 87833-0851 | 2 | | | | | | | | | | | |
| | 87833-0832 | N.A | N.A | 3 | | | | | | | | | | | |
| | 87833-0861 | N.A | N.A | 2 | | | | | | | | | | | |
| | 87833-0824 | N.A | N.A | 2 | | | | | | | | | | | |
| | 87833-0825 | N.A | N.A | 3 | | | | | | | | | | | |
| 10 | 87833-1019 | N.A | N.A | 1 | N.A | N.A | YES | YES | 12.65 | 8.00 | 11.00 | 10.85 | N.A | N.A | 2.16 |
| | 87833-1020 | N.A | A13 87833-1026 | 2 | | | | | | | | | | | |
| | 87833-1021 | N.A | N.A | 3 | | | | | | | | | | | |
| | 87833-1031 | N.A | 87833-1027 | 2 | | | | | | | | | | | |
| | 87833-1032 | N.A | N.A | 3 | | | | | | | | | | | |
| | N.A | 87833-1041 | 87833-1051 | 2 | | | | | | | | | | | |
| | 87833-1024 | N.A | N.A | 2 | | | | | | | | | | | |
| | 87833-1025 | N.A | N.A | 3 | | | | | | | | | | | |
| 12 | 87833-1219 | N.A | N.A | 1 | N.A | N.A | YES | YES | 14.65 | 10.00 | 13.00 | 12.85 | N.A | N.A | 2.16 |
| | 87833-1220 | N.A | 87833-1240 | 2 | | | | | | | | | | | |
| | 87833-1221 | N.A | N.A | 3 | | | | | | | | | | | |
| | 87833-6020 | N.A | N.A | 2 | | | | | | | | | | | |
| | 87833-1231 | N.A | N.A | 2 | | | | | | | | | | | |
| | 87833-1232 | N.A | N.A | 3 | | | | | | | | | | | |
| | 87833-1224 | N.A | N.A | 2 | | | | | | | | | | | |
| | 87833-1225 | N.A | N.A | 3 | | | | | | | | | | | |

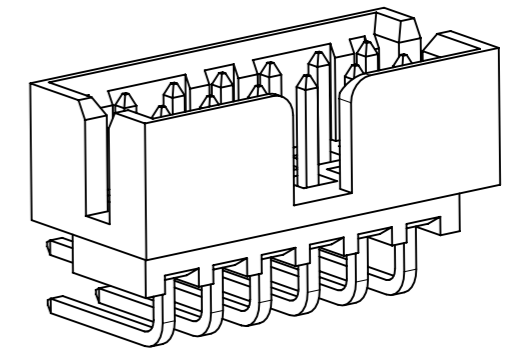
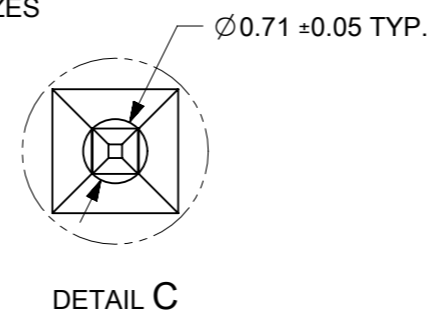
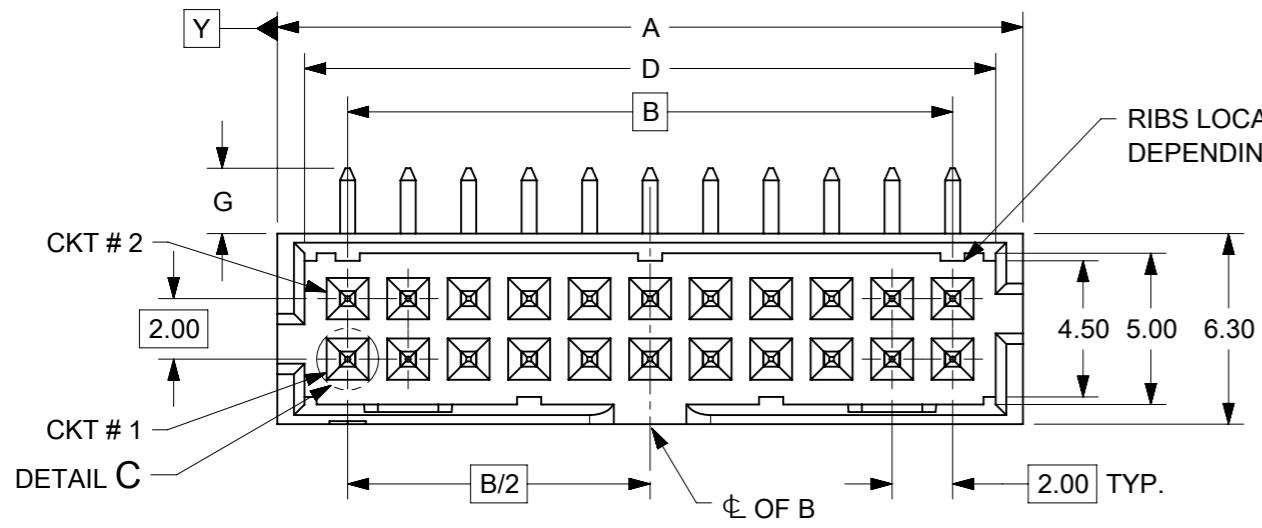
PLATING OPTIONS:

- 1 - 0.05-0.13µm/2-5µin GOLD IN CONTACT AREA AND 1.88µm/75µin MIN. MATTE TIN IN SOLDER TAIL AREA OVER 1.27µm/50µin MIN. NICKEL OVERALL.
- 2 - 0.38µm/15µin MIN. GOLD IN CONTACT AREA AND 1.88µm/75µin MIN. MATTE TIN IN SOLDER TAIL AREA OVER 1.27µm/50µin MIN. NICKEL OVERALL.
- 3 - 0.76µm/30µin MIN. GOLD IN CONTACT AREA AND 1.88µm/75µin MIN. MATTE TIN IN SOLDER TAIL AREA OVER 1.27µm/50µin MIN. NICKEL OVERALL.

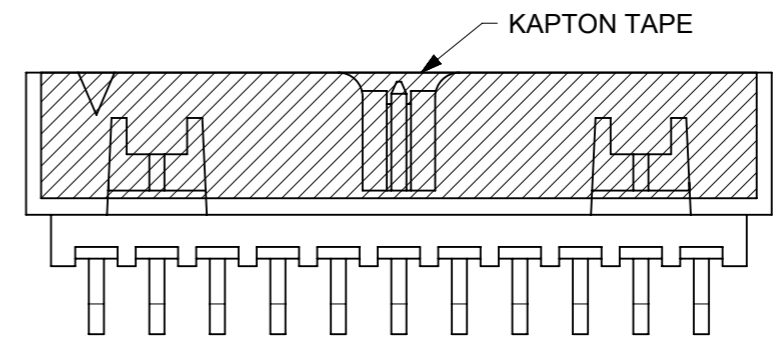
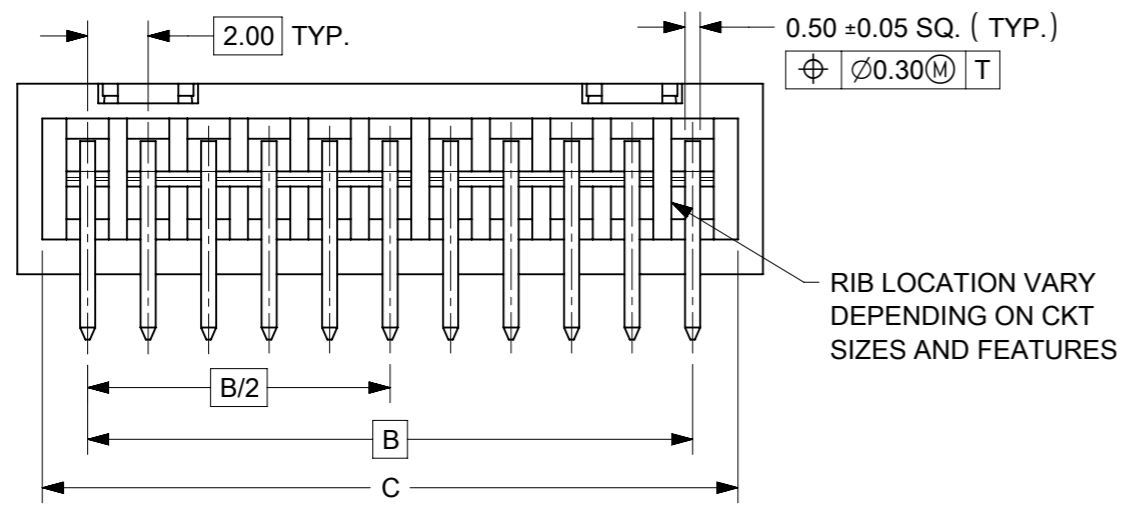
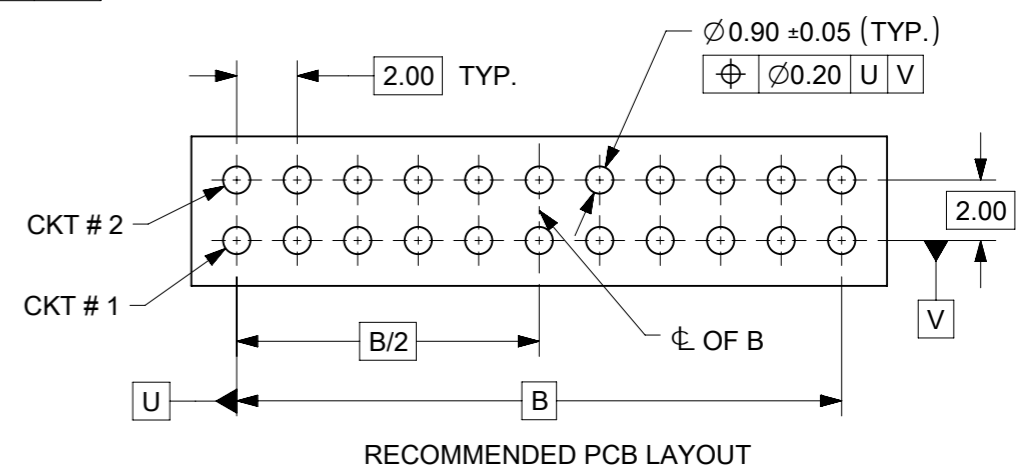
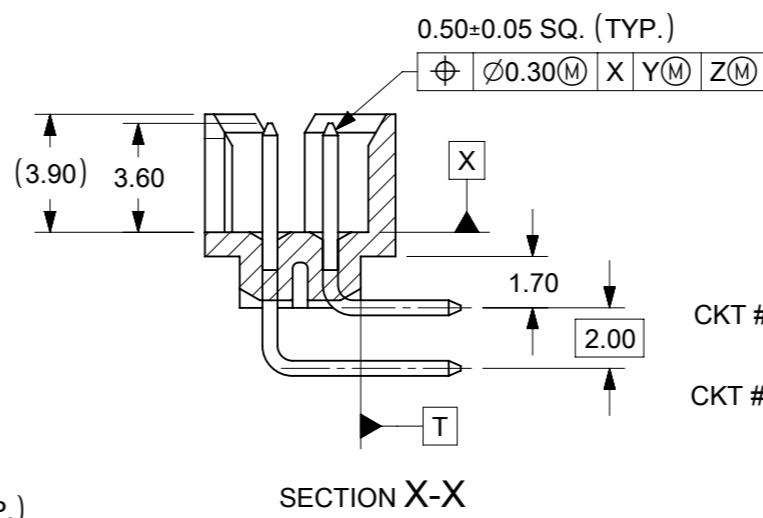
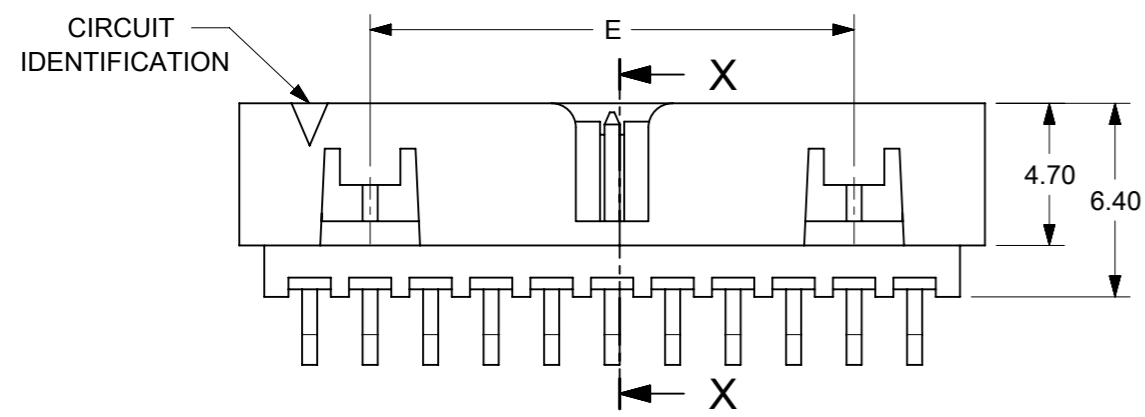
THIS DRAWING CONTAINS INFORMATION THAT IS PROPRIETARY TO MOLEX ELECTRONIC TECHNOLOGIES, LLC AND SHOULD NOT BE USED WITHOUT WRITTEN PERMISSION

| | | | | | | | | | | | |
|---|------------|---------------------------------------|-------|-----------------|-----|--------------|--|---|--|--|--|
| EC NO: 718010 DRWN: DANUSA CHK'D: DANUSA REV APPR: MIRAMAKRISHNA | 2022/08/26 | GENERAL TOLERANCES (UNLESS SPECIFIED) | | DIMENSION UNITS | | SCALE | |  | | | |
| | 2022/09/19 | MM | INCH | MM | NTS | DRWN BY DATE | | | | | |
| | 2022/09/19 | 4 PLACES ± | ± | GMENARLY | | 2015/09/29 | | PRODUCT CUSTOMER DRAWING | | | |
| | | 3 PLACES ± | ± | CHK'D BY DATE | | 2015/10/30 | | | | | |
| | | 2 PLACES ± | 0.2 ± | APPR BY DATE | | 2015/11/03 | | DOCUMENT NUMBER DOC TYPE DOC PART SHEET NUMBER SD-87833-0001 PSD 001 5 OF 9 | | | |
| | 1 PLACES ± | ± | KHLIM | | | | | | | | |

14 TO 50 CIRCUITS



ISO VIEW OF HEADER WITH CENTER POLARIZATION AND DUAL SIDE SLOTS



- NOTES:
- MATERIALS:
HOUSING: 30% GF, NYLON, UL94V-0, COLOR: BLACK.
PIN: 0.50mm SQ PHOSPHOR BRONZE.
 - FINISHES: REFER TO PLATING OPTIONS.
 - PRODUCT SPECIFICATION: PS-87831-027
 - PACKAGING SPECIFICATION: SEE PACKAGING SPECS TABLE ON SHEET 1
 - MATES WITH: A. MOLEX CRIMP RECEPTACLE HOUSING: 51110 SERIES AND CRIMP TERMINAL: 50394 SERIES.
B. MOLEX 2mm MILLIGRID DUAL ROW IDT: 87568 SERIES.
C. MOLEX 2mm MILLIGRID DUAL ROW RECEPTACLE: 79107 (GOLD PLATED), 78787 (TIN PLATED)
 - FOR ILLUSTRATION PURPOSE, 22 CIRCUITS HEADER IS SHOWN.

THIS DRAWING CONTAINS INFORMATION THAT IS PROPRIETARY TO MOLEX ELECTRONIC TECHNOLOGIES, LLC AND SHOULD NOT BE USED WITHOUT WRITTEN PERMISSION

| | | | | | | | |
|---|------------|--|-------|-----------------|------------------------|-----------------------|------------|
| EC NO: 718010 DRWN: DANUSA CHK'D: DANUSA REV APPR: MIRAMAKRISHNA | 2022/08/26 | GENERAL TOLERANCES (UNLESS SPECIFIED) | | DIMENSION UNITS | SCALE | | |
| | 2022/09/19 | MM | INCH | MM | NTS | | |
| | 2022/09/19 | 4 PLACES | ± | ± | DRWN BY | | DATE |
| | | 3 PLACES | ± | ± | GMENARLY | | 2015/09/29 |
| | | 2 PLACES | ± 0.2 | ± | CHK'D BY | | DATE |
| | 1 PLACES | ± | ± | CGOH | 2015/10/30 | | |
| | 0 PLACES | ± | ± | APPR BY | DATE | | |
| | | | | KHLIM | 2015/11/03 | | |
| | | ANGULAR TOL = 3.0 | | DRAWING SIZE | THIRD ANGLE PROJECTION | | |
| | | DRAFT WHERE APPLICABLE MUST REMAIN WITHIN DIMENSIONS | | A3 | | | |
| | | | | SERIES | MATERIAL NUMBER | CUSTOMER | |
| | | | | 87833 | SEE TABLE | GENERAL MARKET | |
| | | | | DOCUMENT NUMBER | DOC TYPE | DOC PART SHEET NUMBER | |
| | | | | SD-87833-0001 | PSD | 001 6 OF 9 | |


14 TO 24 CIRCUITS

| CKT SIZE | ASSY. P/N WITHOUT KAPTON IN TUBE | ASSY. P/N WITH KAPTON IN TUBE | ASSY. P/N WITH KAPTON IN T&R | ASSY. P/N WITHOUT KAPTON IN T&R | PLATING OPTIONS | FRICTION LOCKS | | DUAL SIDE SLOTS | CENTER POLARIZATION | DIMENSION | | | | | | | | | | | | | | | | |
|------------|----------------------------------|-------------------------------|------------------------------|---------------------------------|-----------------|----------------|--------|-----------------|---------------------|-----------|-------|-------|-------|-------|-----|-----------------|-------|-------|-------|-------|-------|-------|-------|-------|-----|------|
| | | | | | | DUAL | CENTER | | | A | B | C | D | E | F | G (SOLDER TAIL) | | | | | | | | | | |
| 14 | 87833-1419 | N.A | N.A | N.A | 1 | YES | N.A | YES | YES | 16.65 | 12.00 | 15.00 | 14.85 | 8.00 | N.A | 2.16 | | | | | | | | | | |
| | 87833-1420 | N.A | N.A | N.A | 2 | | | | | | | | | | | | | | | | | | | | | |
| | 87833-1421 | N.A | N.A | N.A | 3 | | | | | | | | | | | | | | | | | | | | | |
| | 87833-5320 | N.A | N.A | N.A | 2 | YES | N.A | YES | YES | | | | | | | 16.65 | 12.00 | 15.00 | 14.85 | 8.00 | N.A | 3.18 | | | | |
| | 87833-5321 | N.A | N.A | N.A | 3 | | | | | | | | | | | | | | | | | | | | | |
| | 87833-1436 | N.A | N.A | N.A | 3 | | | | | | | | | | | | | | | | | | | | | |
| | N.A | N.A | 87833-7420 | N.A | 2 | | | | | | | | | | | | | | | | | | | | | |
| 16 | 87833-1619 | N.A | N.A | N.A | 1 | YES | N.A | YES | YES | 18.65 | 14.00 | 17.00 | 16.85 | 10.00 | N.A | | | | | | | 2.16 | | | | |
| | 87833-1620 | N.A | N.A | N.A | 2 | | | | | | | | | | | | | | | | | | | | | |
| | 87833-1621 | N.A | 87833-7821 | N.A | 3 | | | | | | | | | | | | | | | | | | | | | |
| | 87833-6120 | N.A | 87833-7120 | N.A | 2 | | | | | | | | | | | | | | | | | | | | | |
| 18 | 87833-1819 | N.A | N.A | N.A | 1 | YES | N.A | YES | YES | 20.65 | 16.00 | 19.00 | 18.85 | 12.00 | N.A | 2.16 | | | | | | | | | | |
| | 87833-1820 | N.A | N.A | N.A | 2 | | | | | | | | | | | | | | | | | | | | | |
| | 87833-1821 | N.A | N.A | N.A | 3 | | | | | | | | | | | | | | | | | | | | | |
| | 87833-6220 | N.A | N.A | N.A | 2 | | | | | | | | | | | | | | | | | | | | | |
| 20 | 87833-2019 | N.A | N.A | N.A | 1 | YES | N.A | YES | YES | 22.65 | 18.00 | 21.00 | 20.85 | 14.00 | N.A | 2.16 | | | | | | | | | | |
| | 87833-2020 | N.A | 87833-7220 | N.A | 2 | | | | | | | | | | | | | | | | | | | | | |
| | 87833-2021 | N.A | N.A | N.A | 3 | | | | | | | | | | | | | | | | | | | | | |
| | 87833-6520 | N.A | N.A | N.A | 2 | YES | N.A | YES | YES | | | | | | | 22.65 | 18.00 | 21.00 | 20.85 | 14.00 | N.A | 3.18 | | | | |
| | 87833-6521 | N.A | N.A | 87833-2037 | 3 | | | | | | | | | | | | | | | | | | | | | |
| | 87833-2036 | N.A | N.A | N.A | 3 | | | | | | | | | | | | | | | | | | | | | |
| 87833-2219 | N.A | N.A | N.A | 1 | | | | | | | | | | | | | | | | | | | | | | |
| 22 | 87833-2220 | N.A | N.A | N.A | 2 | YES | N.A | YES | YES | 24.65 | 20.00 | 23.00 | 22.85 | 16.00 | N.A | | | | | | | 2.16 | | | | |
| | 87833-2221 | N.A | N.A | N.A | 3 | | | | | | | | | | | | | | | | | | | | | |
| | 87833-2419 | N.A | N.A | N.A | 1 | | | | | | | | | | | | | | | | | | | | | |
| 24 | 87833-2420 | N.A | 87833-7020 | N.A | 2 | YES | N.A | YES | YES | 26.65 | 22.00 | 25.00 | 24.85 | 18.00 | N.A | 2.16 | | | | | | | | | | |
| | 87833-2421 | N.A | N.A | N.A | 3 | | | | | | | | | | | | | | | | | | | | | |
| | 87833-7320 | N.A | N.A | N.A | 2 | | | | | | | | | | | YES | N.A | YES | YES | 26.65 | 22.00 | 25.00 | 24.85 | 18.00 | N.A | 2.00 |
| | 87833-2436 | N.A | N.A | N.A | 3 | | | | | | | | | | | | | | | | | | | | | |
| | 87833-6920 | N.A | N.A | N.A | 2 | | | | | | | | | | | | | | | | | | | | | |
| | 87833-6920 | N.A | N.A | N.A | 2 | | | | | | | | | | | | | | | | | | | | | |

PLATING OPTIONS:

- 1 - 0.05-0.13µm/2-5µin GOLD IN CONTACT AREA AND 1.88µm/75µin MIN. MATTE TIN IN SOLDER TAIL AREA OVER 1.27µm/50µin MIN. NICKEL OVERALL.
- 2 - 0.38µm/15µin MIN. GOLD IN CONTACT AREA AND 1.88µm/75µin MIN. MATTE TIN IN SOLDER TAIL AREA OVER 1.27µm/50µin MIN. NICKEL OVERALL.
- 3 - 0.76µm/30µin MIN. GOLD IN CONTACT AREA AND 1.88µm/75µin MIN. MATTE TIN IN SOLDER TAIL AREA OVER 1.27µm/50µin MIN. NICKEL OVERALL.

THIS DRAWING CONTAINS INFORMATION THAT IS PROPRIETARY TO MOLEX ELECTRONIC TECHNOLOGIES, LLC AND SHOULD NOT BE USED WITHOUT WRITTEN PERMISSION

| | | | | | | | | | | |
|---|--|-------------------|-----------------|------------------------|------------|--------------------------|---|---|----------|--------------|
| EC NO: 718010 DRWN: DANUSA CHK'D: DANUSA REV APPR: MIRAMAKRISHNA | GENERAL TOLERANCES (UNLESS SPECIFIED) | | DIMENSION UNITS | | SCALE | |  | | | |
| | | | MM | INCH | MM | NTS | | | | |
| | 4 PLACES | ± | | ± | DRWN BY | DATE | | MILLIGRID, 2MM PITCH SHROUDED HEADER R/A, THROUGH HOLE | | |
| | 3 PLACES | ± | | ± | GMENARLY | 2015/09/29 | | | | |
| | 2 PLACES | ± 0.2 | | ± | CHK'D BY | DATE | | | | |
| 1 PLACES | ± | | ± | CGOH | 2015/10/30 | | | | | |
| 0 PLACES | ± | | ± | APPR BY | DATE | | | | | |
| | | ANGULAR TOL = 3.0 | | KHLIM | 2015/11/03 | PRODUCT CUSTOMER DRAWING | | | | |
| | DRAFT WHERE APPLICABLE MUST REMAIN WITHIN DIMENSIONS | | A3 | THIRD ANGLE PROJECTION | | SERIES | MATERIAL NUMBER | CUSTOMER | | |
| | | | | | | 87833 | SEE TABLE | GENERAL MARKET | | |
| | | | | | | DOCUMENT NUMBER | | DOC TYPE | DOC PART | SHEET NUMBER |
| | | | | | | SD-87833-0001 | | PSD | 001 | 7 OF 9 |


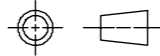
26 TO 38 CIRCUITS

| CKT SIZE | ASSY. P/N WITHOUT KAPTON IN TUBE | ASSY. P/N WITH KAPTON IN TUBE | ASSY. P/N WITH KAPTON IN T&R | PLATING OPTIONS | FRICTION LOCKS | | DUAL SIDE SLOTS | CENTER POLARIZATION | DIMENSION | | | | | | | |
|------------|----------------------------------|-------------------------------|------------------------------|-----------------|----------------|--------|-----------------|---------------------|-----------|-------|-------|-------|-------|-----|-----------------|------|
| | | | | | DUAL | CENTER | | | A | B | C | D | E | F | G (SOLDER TAIL) | |
| 26 | 87833-2619 | N.A | N.A | 1 | | | | | | | | | | | | |
| | 87833-2620 | N.A | N.A | 2 | YES | N.A | YES | YES | 28.65 | 24.00 | 27.00 | 26.85 | 20.00 | N.A | 2.16 | |
| | 87833-2621 | N.A | N.A | 3 | | | | | | | | | | | | |
| | 87833-2636 | N.A | N.A | 3 | YES | N.A | YES | YES | | | | | | | | 3.50 |
| 87833-2819 | N.A | N.A | 1 | | | | | | | | | | | | | |
| 28 | 87833-2820 | N.A | N.A | 2 | YES | N.A | YES | YES | 30.65 | 26.00 | 29.00 | 28.85 | 22.00 | N.A | 2.16 | |
| | 87833-2821 | N.A | N.A | 3 | | | | | | | | | | | | |
| | 87833-6620 | N.A | N.A | 2 | YES | N.A | YES | YES | | | | | | | | 3.18 |
| | 87833-3019 | N.A | N.A | 1 | | | | | | | | | | | | |
| 30 | 87833-3020 | N.A | N.A | 2 | YES | N.A | YES | YES | 32.65 | 28.00 | 31.00 | 30.85 | 24.00 | N.A | 2.16 | |
| | 87833-3021 | N.A | N.A | 3 | | | | | | | | | | | | |
| | 87833-6720 | N.A | N.A | 2 | YES | N.A | YES | YES | | | | | | | | 3.18 |
| | 87833-6721 | N.A | N.A | 3 | | | | | | | | | | | | |
| | 87833-3036 | N.A | N.A | 3 | YES | N.A | YES | YES | | | | | | | 3.50 | |
| | 87833-3219 | N.A | N.A | 1 | | | | | | | | | | | | |
| 32 | 87833-3220 | N.A | N.A | 2 | YES | N.A | YES | YES | 34.65 | 30.00 | 33.00 | 32.85 | 26.00 | N.A | 2.16 | |
| | 87833-3221 | N.A | N.A | 3 | | | | | | | | | | | | |
| | 87833-3419 | N.A | N.A | 1 | | | | | | | | | | | | |
| 34 | 87833-3420 | N.A | N.A | 2 | YES | N.A | YES | YES | 36.65 | 32.00 | 35.00 | 34.85 | 28.00 | N.A | 2.16 | |
| | 87833-3421 | N.A | N.A | 3 | | | | | | | | | | | | |
| | 87833-5420 | N.A | N.A | 2 | YES | N.A | YES | YES | | | | | | | | 3.18 |
| | 87833-3424 | N.A | N.A | 2 | N.A | N.A | YES | YES | | | | | | | 2.92 | |
| | 87833-3619 | N.A | N.A | 1 | | | | | | | | | | | | |
| 36 | 87833-3620 | N.A | N.A | 2 | YES | N.A | YES | YES | 38.65 | 34.00 | 37.00 | 36.85 | 30.00 | N.A | 2.16 | |
| | 87833-3621 | N.A | N.A | 3 | | | | | | | | | | | | |
| | 87833-3819 | N.A | N.A | 1 | | | | | | | | | | | | |
| 38 | 87833-3820 | N.A | N.A | 2 | YES | N.A | YES | YES | 40.65 | 36.00 | 39.00 | 38.85 | 32.00 | N.A | 2.16 | |
| | 87833-3821 | N.A | N.A | 3 | | | | | | | | | | | | |

PLATING OPTIONS:

- 1 - 0.05-0.13µm/2-5µin GOLD IN CONTACT AREA AND 1.88µm/75µin MIN. MATTE TIN IN SOLDER TAIL AREA OVER 1.27µm/50µin MIN. NICKEL OVERALL.
- 2 - 0.38µm/15µin MIN. GOLD IN CONTACT AREA AND 1.88µm/75µin MIN. MATTE TIN IN SOLDER TAIL AREA OVER 1.27µm/50µin MIN. NICKEL OVERALL.
- 3 - 0.76µm/30µin MIN. GOLD IN CONTACT AREA AND 1.88µm/75µin MIN. MATTE TIN IN SOLDER TAIL AREA OVER 1.27µm/50µin MIN. NICKEL OVERALL.

THIS DRAWING CONTAINS INFORMATION THAT IS PROPRIETARY TO MOLEX ELECTRONIC TECHNOLOGIES, LLC AND SHOULD NOT BE USED WITHOUT WRITTEN PERMISSION

| | | | | | | | | | | |
|---|---------------------------------------|--------------|-----------------|---|------------|--------------------------|---|----------------|----------|--------------|
| EC NO: 718010 DRWN: DANUSA CHK'D: DANUSA REV APPR: MIRAMAKRISHNA | GENERAL TOLERANCES (UNLESS SPECIFIED) | | DIMENSION UNITS | | SCALE | |  | | | |
| | | | MM | INCH | MM | NTS | | | | |
| | 4 PLACES | ± | | ± | DRWN BY | DATE | MILLIGRID, 2MM PITCH SHROUDED HEADER R/A, THROUGH HOLE | | | |
| | 3 PLACES | ± | | ± | GMENARLY | 2015/09/29 | | | | |
| | 2 PLACES | ± 0.2 | | ± | CHK'D BY | DATE | | | | |
| 1 PLACES | ± | | ± | CGOH | 2015/10/30 | PRODUCT CUSTOMER DRAWING | | | | |
| 0 PLACES | ± | | ± | APPR BY | DATE | | | | | |
| ANGULAR TOL = 3.0 | | DRAWING SIZE | | THIRD ANGLE PROJECTION | | SERIES | MATERIAL NUMBER | CUSTOMER | | |
| DRAFT WHERE APPLICABLE MUST REMAIN WITHIN DIMENSIONS | | A3 | |  | | 87833 | SEE TABLE | GENERAL MARKET | | |
| RELEASE STATUS P1 RELEASE DATE 2022/09/19 07:59:04 | | | | | | DOCUMENT NUMBER | | DOC TYPE | DOC PART | SHEET NUMBER |
| | | | | | | SD-87833-0001 | | PSD | 001 | 8 OF 9 |


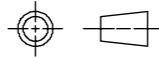
40 TO 50 CIRCUITS

| CKT SIZE | ASSY. P/N WITHOUT KAPTON IN TUBE | ASSY. P/N WITH KAPTON IN TUBE | ASSY. P/N WITH KAPTON IN T&R | ASSY. P/N WITHOUT KAPTON IN T&R | PLATING OPTIONS | FRICTION LOCKS | | DUAL SIDE SLOTS | CENTER POLARIZATION | DIMENSION | | | | | | |
|----------|----------------------------------|-------------------------------|------------------------------|---------------------------------|-----------------|----------------|--------|-----------------|---------------------|-----------|-------|-------|-------|-------|-----|-----------------|
| | | | | | | DUAL | CENTER | | | A | B | C | D | E | F | G (SOLDER TAIL) |
| 40 | 87833-4019 | N.A | N.A | N.A | 1 | | | | | | | | | | | |
| | 87833-4020 | N.A | N.A | N.A | 2 | YES | N.A | YES | YES | 42.65 | 38.00 | 41.00 | 40.85 | 34.00 | N.A | 2.16 |
| | 87833-4021 | N.A | N.A | N.A | 3 | | | | | | | | | | | |
| 42 | 87833-4219 | N.A | N.A | N.A | 1 | | | | | | | | | | | |
| | 87833-4220 | N.A | N.A | N.A | 2 | YES | N.A | YES | YES | 44.65 | 40.00 | 43.00 | 42.85 | 36.00 | N.A | 2.16 |
| | 87833-4221 | N.A | N.A | N.A | 3 | | | | | | | | | | | |
| | 87833-4222 | N.A | 87833-4322 | 87833-4223 | 3 | YES | N.A | YES | YES | | | | | | | 3.50 |
| 44 | 87833-4419 | N.A | N.A | N.A | 1 | | | | | | | | | | | |
| | 87833-4420 | N.A | N.A | N.A | 2 | | | | | 44.65 | 40.00 | 43.00 | 42.85 | 38.00 | N.A | 2.16 |
| | 87833-4421 | N.A | N.A | N.A | 3 | | | | | | | | | | | |
| | 87833-4424 | N.A | N.A | N.A | 2 | N.A | N.A | YES | YES | 2.16 | 42.00 | 45.00 | 44.85 | | | |
| | 87833-4425 | N.A | N.A | N.A | 3 | | | | | | | | | | | 2.92 |
| 46 | 87833-4619 | N.A | N.A | N.A | 1 | | | | | | | | | | | |
| | 87833-4620 | N.A | N.A | N.A | 2 | YES | N.A | YES | YES | 48.65 | 44.00 | 47.00 | 46.85 | 40.00 | N.A | 2.16 |
| | 87833-4621 | N.A | N.A | N.A | 3 | | | | | | | | | | | |
| 48 | 87833-4819 | N.A | N.A | N.A | 1 | | | | | | | | | | | |
| | 87833-4820 | N.A | N.A | N.A | 2 | YES | N.A | YES | YES | 50.65 | 46.00 | 49.00 | 48.85 | 42.00 | N.A | 2.16 |
| | 87833-4821 | N.A | N.A | N.A | 3 | | | | | | | | | | | |
| 50 | 87833-5019 | N.A | N.A | N.A | 1 | | | | | | | | | | | |
| | 87833-5020 | N.A | N.A | N.A | 2 | YES | N.A | YES | YES | 52.65 | 48.00 | 51.00 | 50.85 | 44.00 | N.A | 2.16 |
| | 87833-5021 | N.A | N.A | N.A | 3 | | | | | | | | | | | |

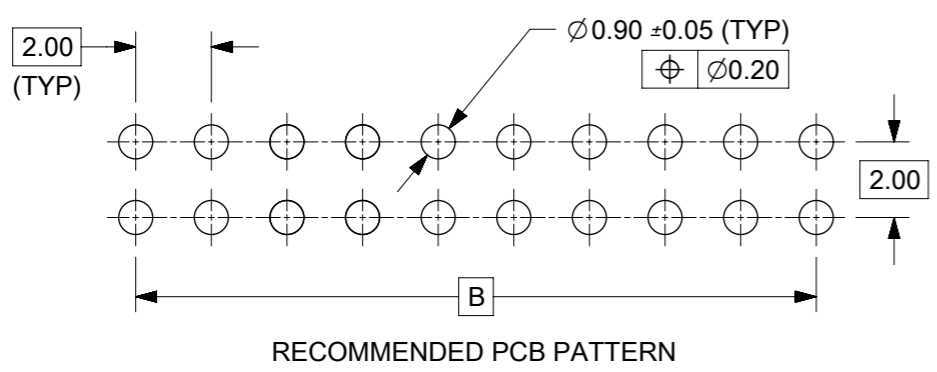
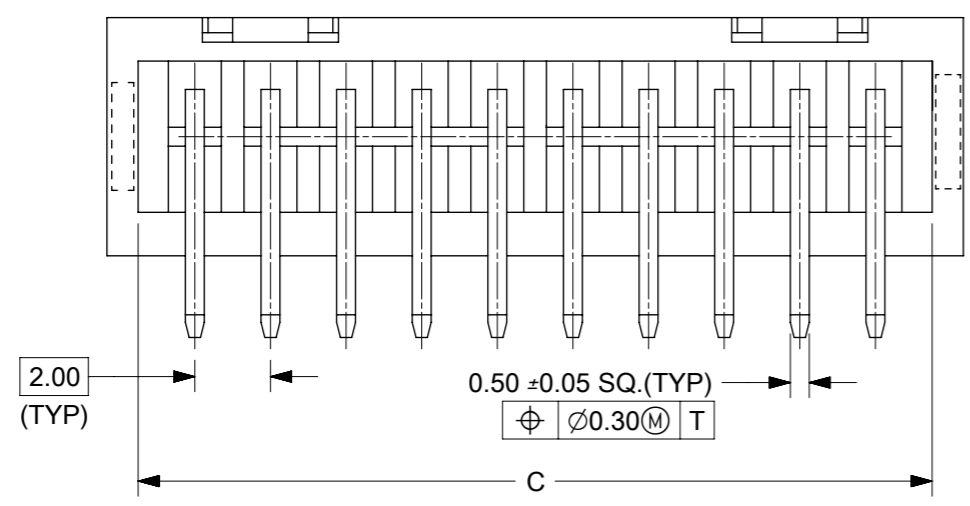
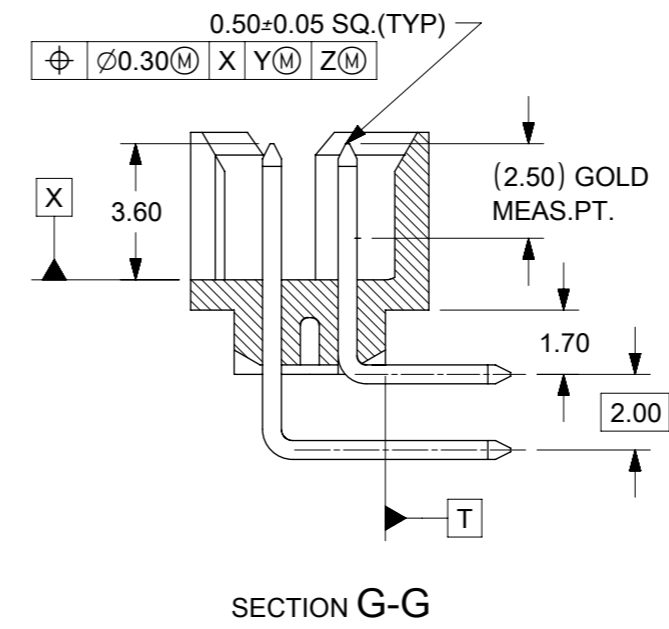
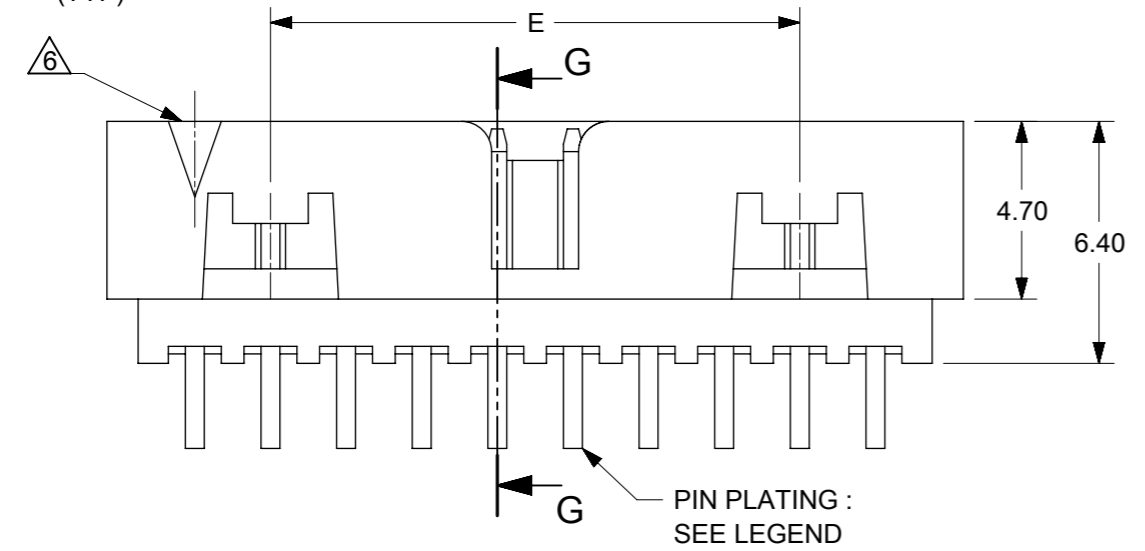
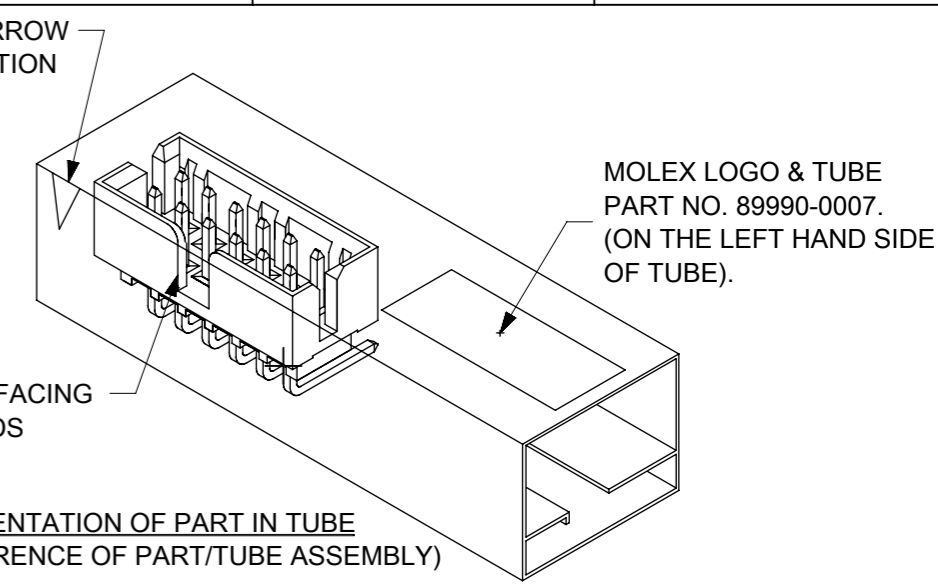
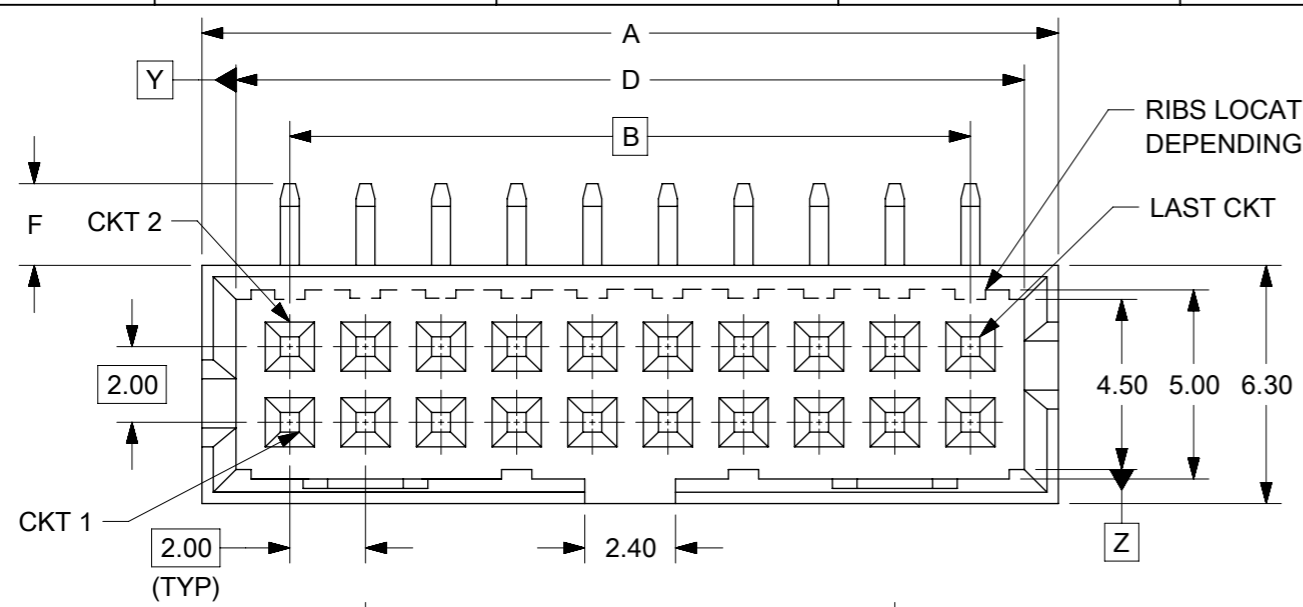
PLATING OPTIONS:

- 1 - 0.05-0.13µm/2-5µin GOLD IN CONTACT AREA AND 1.88µm/75µin MIN. MATTE TIN IN SOLDER TAIL AREA OVER 1.27µm/50µin MIN. NICKEL OVERALL.
- 2 - 0.38µm/15µin MIN. GOLD IN CONTACT AREA AND 1.88µm/75µin MIN. MATTE TIN IN SOLDER TAIL AREA OVER 1.27µm/50µin MIN. NICKEL OVERALL.
- 3 - 0.76µm/30µin MIN. GOLD IN CONTACT AREA AND 1.88µm/75µin MIN. MATTE TIN IN SOLDER TAIL AREA OVER 1.27µm/50µin MIN. NICKEL OVERALL.

THIS DRAWING CONTAINS INFORMATION THAT IS PROPRIETARY TO MOLEX ELECTRONIC TECHNOLOGIES, LLC AND SHOULD NOT BE USED WITHOUT WRITTEN PERMISSION

| | | | | | | | | | | |
|---|---------------------------------------|--------------|-----------------|---|----------|---|---|---------------|---------------|----------------------|
| EC NO: 718010 DRWN: DANUSA CHK'D: DANUSA REV APPR: MIRAMAKRISHNA | GENERAL TOLERANCES (UNLESS SPECIFIED) | | DIMENSION UNITS | | SCALE | |  | | | |
| | | | MM | INCH | MM | NTS | | | | |
| | 4 PLACES | ± | | ± | DRWN BY | DATE | MILLIGRID, 2MM PITCH SHROUDED HEADER R/A, THROUGH HOLE | | | |
| | 3 PLACES | ± | | ± | GMENARLY | 2015/09/29 | | | | |
| | 2 PLACES | ± | 0.2 | ± | CHK'D BY | DATE | | | | |
| | 1 PLACES | ± | | ± | CGOH | 2015/10/30 | PRODUCT CUSTOMER DRAWING | | | |
| 0 PLACES | ± | | ± | APPR BY | DATE | | | | | |
| ANGULAR TOL = 3.0 | | DRAWING SIZE | | THIRD ANGLE PROJECTION | | SERIES: 87833 MATERIAL NUMBER: SEE TABLE CUSTOMER: GENERAL MARKET | | | | |
| DRAFT WHERE APPLICABLE MUST REMAIN WITHIN DIMENSIONS | | A3 | |  | | DOCUMENT NUMBER: SD-87833-0001 | | DOC TYPE: PSD | DOC PART: 001 | SHEET NUMBER: 9 OF 9 |

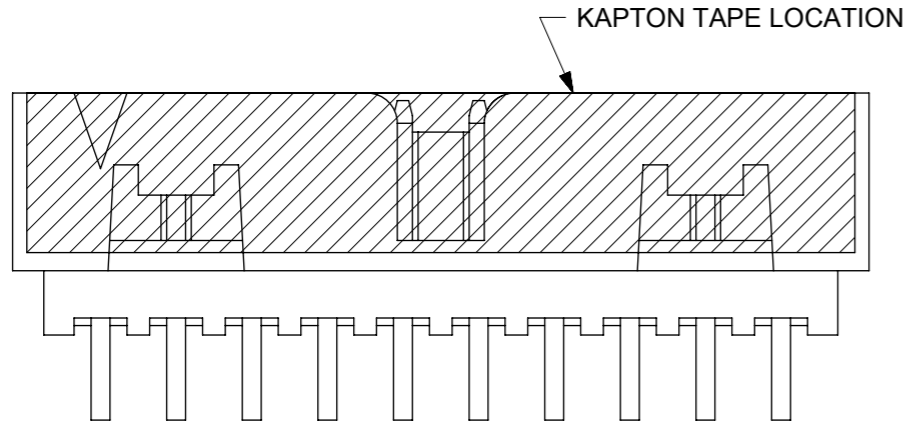
| | | | | |
|----------------|----|--------------|------------|----------|
| RELEASE STATUS | P1 | RELEASE DATE | 2022/09/19 | 07:59:04 |
|----------------|----|--------------|------------|----------|



- NOTES:
- FOR ILLUSTRATION PURPOSES, 20 CIRCUIT SIZE WAFER IS SHOWN.
 - MATERIAL :
HOUSING : NYLON GLASS-FILLED, UL94V-0, COLOR BLACK.
PIN : 0.50mm SQ.PHOSPHOR BRONZE.
 - PRODUCT SPECIFICATION PS-87831-027 APPLIES.
 - NO CENTRE POLARIZATION SLOT FOR CKT SIZE 4 AND 6.
 - NO SIDE LOCKING SLOT FROM 4 TO 12 CKT SIZE.
 - CKT 4 & 6 HAS NO IDENTIFICATION TAG.
 - THIS HEADER MATES WITH MOLEX:
a) CRIMP RECEPTACLE HOUSING, 51110 SERIES WITH CRIMP TERMINAL, 50394 SERIES.
b) 2mm MILLIGRID DUAL ROW IDT, 87568 SERIES.
 - PARTS TO BE PACKED IN TUBE WITH MOISTURE BARRIER BAG.
 - PLATING SPECIFICATION REFERRED TO SHEET 2.
 - PACKAGING SPEC: PK-87831-001 FOR TUBE
PK-87831-300 FOR T&R

| | | | | | | | | | | |
|---|------------------|---------------|---------------------------------------|--|--|------|-------------------------------------|------------|---|--|
| THIS DRAWING CONTAINS INFORMATION THAT IS PROPRIETARY TO MOLEX ELECTRONIC TECHNOLOGIES, LLC AND SHOULD NOT BE USED WITHOUT WRITTEN PERMISSION | | | | | | | | | | |
| QUALITY SYMBOLS | MIGRATED TO ECTR | | GENERAL TOLERANCES (UNLESS SPECIFIED) | | DIMENSION UNITS | | SCALE | | | |
| ▽A = 0 | 2017/12/15 | 2018/04/24 | | | MM | NTS | | | | |
| ▽E = 0 | DRWN: MUM | CHK'D: CD | | | MM | INCH | DRWN BY | DATE | MGRID, SHROUDED HEADER W/SLOT AND STANDOFF, R/A | |
| ▽B = 0 | 2018/04/24 | 2018/04/24 | | | 4 PLACES ± | ± | ATSEE | 2003/10/23 | | |
| ▽ = 0 | EC NO: 170067 | REV APPR: GGA | | | 3 PLACES ± | ± | CHK'D BY | DATE | PRODUCT CUSTOMER DRAWING | |
| ▽C = 0 | 2018/04/24 | 2018/04/24 | | | 2 PLACES ± | 0.2 | KCLING | 2003/11/07 | | |
| ▽ = 0 | DRWN: MUM | CHK'D: CD | | | 1 PLACES ± | ± | APPR BY | DATE | SERIES MATERIAL NUMBER CUSTOMER 87833 SEE TABLE GENERAL MARKET | |
| ▽ = 0 | 2018/04/24 | 2018/04/24 | | | 0 PLACES ± | ± | MLONG | 2010/11/19 | | |
| ▽ = 0 | 2018/04/24 | 2018/04/24 | | | ANGULAR TOL = 3.0 | | DRAWING SIZE THIRD ANGLE PROJECTION | | DOCUMENT NUMBER DOC TYPE DOC PART SHEET NUMBER SD-87833-010 PSD 001 1 OF 3 | |
| ▽ = 0 | 2018/04/24 | 2018/04/24 | | | DRAFT WHERE APPLICABLE MUST REMAIN WITHIN DIMENSIONS | | A3 | | | |

PLS REFER TO PART 87833-**3* FOR CENTER LOCKING SLOT OPTION.



| PART NO IN TUBE (W/O KAPTON) | PART NO IN T&R (WITH KAPTON) | CKT SIZE | VOID PIN LOCATION | DIMENSION | | | | | | PLATING OPTION |
|------------------------------|------------------------------|----------|-------------------|-----------|-------|-------|-------|-------|-------------|----------------|
| | | | | A | B | C | D | E | F | |
| 87833-04** | ---- | 4 | ---- | 6.65 | 2.00 | 5.00 | 4.85 | ---- | 19,20 or 21 | |
| 87833-06** | ---- | 6 | ---- | 8.65 | 4.00 | 7.00 | 6.85 | ---- | | |
| 87833-08** | ---- | 8 | ---- | 10.65 | 6.00 | 9.00 | 8.85 | ---- | | |
| 87833-10** | ---- | 10 | ---- | 12.65 | 8.00 | 11.00 | 10.85 | ---- | | |
| 87833-12** | ---- | 12 | ---- | 14.65 | 10.00 | 13.00 | 12.85 | ---- | | |
| 87833-14** | ---- | 14 | ---- | 16.65 | 12.00 | 15.00 | 14.85 | 8.00 | | |
| 87833-16** | ---- | 16 | ---- | 18.65 | 14.00 | 17.00 | 16.85 | 10.00 | | |
| 87833-18** | ---- | 18 | ---- | 20.65 | 16.00 | 19.00 | 18.85 | 12.00 | | |
| 87833-20** | ---- | 20 | ---- | 22.65 | 18.00 | 21.00 | 20.85 | 14.00 | | |
| 87833-22** | ---- | 22 | ---- | 24.65 | 20.00 | 23.00 | 22.85 | 16.00 | | |
| 87833-24** | ---- | 24 | ---- | 26.65 | 22.00 | 25.00 | 24.85 | 18.00 | | |
| 87833-26** | ---- | 26 | ---- | 28.65 | 24.00 | 27.00 | 26.85 | 20.00 | | |
| 87833-28** | ---- | 28 | ---- | 30.65 | 26.00 | 29.00 | 28.85 | 22.00 | | |
| 87833-30** | ---- | 30 | ---- | 32.65 | 28.00 | 31.00 | 30.85 | 24.00 | | |
| 87833-32** | ---- | 32 | ---- | 34.65 | 30.00 | 33.00 | 32.85 | 26.00 | | |
| 87833-34** | ---- | 34 | ---- | 36.65 | 32.00 | 35.00 | 34.85 | 28.00 | | |
| 87833-36** | ---- | 36 | ---- | 38.65 | 34.00 | 37.00 | 36.85 | 30.00 | | |
| 87833-38** | ---- | 38 | ---- | 40.65 | 36.00 | 39.00 | 38.85 | 32.00 | | |
| 87833-40** | ---- | 40 | ---- | 42.65 | 38.00 | 41.00 | 40.85 | 34.00 | | |
| 87833-42** | ---- | 42 | ---- | 44.65 | 40.00 | 43.00 | 42.85 | 36.00 | | |
| 87833-44** | ---- | 44 | ---- | 46.65 | 42.00 | 45.00 | 44.85 | 38.00 | | |
| 87833-46** | ---- | 46 | ---- | 48.65 | 44.00 | 47.00 | 46.85 | 40.00 | | |
| 87833-48** | ---- | 48 | ---- | 50.65 | 46.00 | 49.00 | 48.85 | 42.00 | | |
| 87833-50** | ---- | 50 | ---- | 52.65 | 48.00 | 51.00 | 50.85 | 44.00 | | |
| 87833-7000 | ---- | 34 | 21 | 36.65 | 32.00 | 35.00 | 34.85 | 28.00 | 00 | |
| 87833-5121 | ---- | 26 | 14 | 28.65 | 24.00 | 27.00 | 26.85 | 20.00 | 21 | |
| 87833-5120 | ---- | 10 | 7 | 12.65 | 8.00 | 11.00 | 10.85 | ---- | 20 | |
| 87833-5520 | ---- | 40 | 21 | 42.65 | 38.00 | 41.00 | 40.85 | 34.00 | | |
| 87833-5620 | ---- | 20 | 14 | 22.65 | 18.00 | 21.00 | 20.85 | 14.00 | | |
| 87833-5720 | ---- | 24 | 13 | 26.65 | 22.00 | 25.00 | 24.85 | 18.00 | | |
| 87833-5820 | ---- | 14 | 1 | 16.65 | 12.00 | 15.00 | 14.85 | 8.00 | | |
| 87833-2020 | 87833-7220 | 20 | ---- | 22.65 | 18.00 | 21.00 | 20.85 | 14.00 | | |
| 87833-63** | ---- | 8 | ---- | 10.65 | 6.00 | 9.00 | 8.85 | ---- | 20 OR 21 | |
| 87833-53** | ---- | 14 | ---- | 16.65 | 12.00 | 15.00 | 14.85 | 8.00 | | |
| 87833-5420 | ---- | 34 | ---- | 36.65 | 32.00 | 35.00 | 34.85 | 28.00 | 20 | |
| 87833-5920 | ---- | 4 | ---- | 6.65 | 2.00 | 5.00 | 4.85 | ---- | | |
| 87833-6020 | ---- | 12 | ---- | 14.65 | 10.00 | 13.00 | 12.85 | ---- | | |
| 87833-6120 | 87833-7120 | 16 | ---- | 18.65 | 14.00 | 17.00 | 16.85 | 10.00 | | |
| 87833-6220 | ---- | 18 | ---- | 20.65 | 16.00 | 19.00 | 18.85 | 12.00 | | |
| 87833-6420 | ---- | 6 | ---- | 8.65 | 4.00 | 7.00 | 6.85 | ---- | | |
| 87833-65** | ---- | 20 | ---- | 22.65 | 18.00 | 21.00 | 20.85 | 14.00 | | |
| | | | | | | | | | | 20 OR 21 |

2.16

3.18

| | | | | | | | | | | | | | | | | | | | |
|-----------------|------------------|------------|------------|------------|--|-----------------|------|------------------------|-----------------|---|-------|-----------------|--|----------------|--|--|--|--|--|
| QUALITY SYMBOLS | | | | | | | | | | THIS DRAWING CONTAINS INFORMATION THAT IS PROPRIETARY TO MOLEX ELECTRONIC TECHNOLOGIES, LLC AND SHOULD NOT BE USED WITHOUT WRITTEN PERMISSION | | | | | | | | | |
| ▽A = 0 | MIGRATED TO ECTR | 2017/12/15 | 2018/04/24 | 2018/04/24 | GENERAL TOLERANCES (UNLESS SPECIFIED) | | | | DIMENSION UNITS | | SCALE | | | | | | | | |
| ▽E = 0 | | | | | MM | INCH | MM | NTS | | | | | | | | | | | |
| ▽B = 0 | | | | | 4 PLACES ± | ± | ± | DRWN BY | DATE | MGRID, SHROUDED HEADER W/SLOT AND STANDOFF, R/A | | | | | | | | | |
| ▽ = 0 | | | | | 3 PLACES ± | ± | ± | ATSEE | 2003/10/23 | | | | | | | | | | |
| ▽C = 0 | | | | | 2 PLACES ± 0.2 | ± | ± | CHK'D BY | DATE | PRODUCT CUSTOMER DRAWING | | | | | | | | | |
| ⊠ = 0 | | | | | 1 PLACES ± | ± | ± | KCLING | 2003/11/07 | | | | | | | | | | |
| ■ = 0 | | | | | 0 PLACES ± | ± | ± | APPR BY | DATE | GENERAL MARKET | | | | | | | | | |
| ▽ = 0 | | | | | ANGULAR TOL = 3.0 | MM | INCH | MLONG | 2010/11/19 | | | | | | | | | | |
| | | | | | DRAFT WHERE APPLICABLE MUST REMAIN WITHIN DIMENSIONS | DRAWING SIZE | | THIRD ANGLE PROJECTION | | SERIES | | MATERIAL NUMBER | | CUSTOMER | | | | | |
| | | | | | | A3 | | | | 87833 | | SEE TABLE | | GENERAL MARKET | | | | | |
| | | | | | | DOCUMENT NUMBER | | DOC TYPE | | DOC PART | | SHEET NUMBER | | | | | | | |
| | | | | | | SD-87833-010 | | PSD | | 001 | | 2 OF 3 | | | | | | | |


| PART NO IN TUBE (W/O KAPTON) | CKT SIZE | VOID PIN LOCATION | DIMENSION | | | | | | PLATING OPTION |
|---------------------------------|-------------|----------------------|-----------|-------|-------|-------|-------|------|-------------------|
| | | | A | B | C | D | E | F | |
| 87833-6620 | 28 | - | 30.65 | 26.00 | 29.00 | 28.85 | 22.00 | 3.18 | 20 |
| 87833-67** | 30 | - | 32.65 | 28.00 | 31.00 | 30.85 | 24.00 | | 20 OR 21 |
| 87833-6920 | 24 | - | 26.65 | 22.00 | 25.00 | 24.85 | 18.00 | 3.27 | 20 |

PART NUMBER LEGEND :

87833 - * * * *

9 PLATING OPTIONS:

- 18 - 0.38µm/15µin PdNi WITH GOLD FLASH IN CONTACT AREA AND 1.88µm/75µin MIN.TIN IN SOLDER TAIL AREA OVER 1.27µm/50µin MIN. NICKEL OVERALL.
- 19 - 0.05 - 0.13µm/2 - 5µin GOLD IN CONTACT AREA AND 1.88µm/75µin MIN.TIN IN SOLDER TAIL AREA OVER 1.27µm/50µin MIN. NICKEL OVERALL.
- 00/ 20 - 0.38µm/15µin GOLD IN CONTACT AREA AND 1.88µm/75µin MIN.TIN IN SOLDER TAIL AREA OVER 1.27µm/50µin MIN. NICKEL OVERALL.
- 21 - 0.76µm/30µin GOLD IN CONTACT AREA AND 1.88µm/75µin MIN.TIN IN SOLDER TAIL AREA OVER 1.27µm/50µin MIN. NICKEL OVERALL.

| QUALITY SYMBOLS | THIS DRAWING CONTAINS INFORMATION THAT IS PROPRIETARY TO MOLEX ELECTRONIC TECHNOLOGIES, LLC AND SHOULD NOT BE USED WITHOUT WRITTEN PERMISSION | | | | | | | | | |
|---|---|--|------------------|--|--|-----------------|------------------------|--------------------|---|--|
| ▽A = 0 ▽B = 0 ▽C = 0 ▽D = 0 ▽E = 0 ▽F = 0 ▽G = 0 ▽H = 0 ▽I = 0 ▽J = 0 ▽K = 0 ▽L = 0 ▽M = 0 ▽N = 0 ▽O = 0 ▽P = 0 ▽Q = 0 ▽R = 0 ▽S = 0 ▽T = 0 ▽U = 0 ▽V = 0 ▽W = 0 ▽X = 0 ▽Y = 0 ▽Z = 0 ▽AA = 0 ▽AB = 0 ▽AC = 0 ▽AD = 0 ▽AE = 0 ▽AF = 0 ▽AG = 0 ▽AH = 0 ▽AI = 0 ▽AJ = 0 ▽AK = 0 ▽AL = 0 ▽AM = 0 ▽AN = 0 ▽AO = 0 ▽AP = 0 ▽AQ = 0 ▽AR = 0 ▽AS = 0 ▽AT = 0 ▽AU = 0 ▽AV = 0 ▽AW = 0 ▽AX = 0 ▽AY = 0 ▽AZ = 0 ▽BA = 0 ▽BB = 0 ▽BC = 0 ▽BD = 0 ▽BE = 0 ▽BF = 0 ▽BG = 0 ▽BH = 0 ▽BI = 0 ▽BJ = 0 ▽BK = 0 ▽BL = 0 ▽BM = 0 ▽BN = 0 ▽BO = 0 ▽BP = 0 ▽BQ = 0 ▽BR = 0 ▽BS = 0 ▽BT = 0 ▽BU = 0 ▽BV = 0 ▽BW = 0 ▽BX = 0 ▽BY = 0 ▽BZ = 0 ▽CA = 0 ▽CB = 0 ▽CC = 0 ▽CD = 0 ▽CE = 0 ▽CF = 0 ▽CG = 0 ▽CH = 0 ▽CI = 0 ▽CJ = 0 ▽CK = 0 ▽CL = 0 ▽CM = 0 ▽CN = 0 ▽CO = 0 ▽CP = 0 ▽CQ = 0 ▽CR = 0 ▽CS = 0 ▽CT = 0 ▽CU = 0 ▽CV = 0 ▽CW = 0 ▽CX = 0 ▽CY = 0 ▽CZ = 0 ▽DA = 0 ▽DB = 0 ▽DC = 0 ▽DD = 0 ▽DE = 0 ▽DF = 0 ▽DG = 0 ▽DH = 0 ▽DI = 0 ▽DJ = 0 ▽DK = 0 ▽DL = 0 ▽DM = 0 ▽DN = 0 ▽DO = 0 ▽DP = 0 ▽DQ = 0 ▽DR = 0 ▽DS = 0 ▽DT = 0 ▽DU = 0 ▽DV = 0 ▽DW = 0 ▽DX = 0 ▽DY = 0 ▽DZ = 0 ▽EA = 0 ▽EB = 0 ▽EC = 0 ▽ED = 0 ▽EE = 0 ▽EF = 0 ▽EG = 0 ▽EH = 0 ▽EI = 0 ▽EJ = 0 ▽EK = 0 ▽EL = 0 ▽EM = 0 ▽EN = 0 ▽EO = 0 ▽EP = 0 ▽EQ = 0 ▽ER = 0 ▽ES = 0 ▽ET = 0 ▽EU = 0 ▽EV = 0 ▽EW = 0 ▽EX = 0 ▽EY = 0 ▽EZ = 0 ▽FA = 0 ▽FB = 0 ▽FC = 0 ▽FD = 0 ▽FE = 0 ▽FF = 0 ▽FG = 0 ▽FH = 0 ▽FI = 0 ▽FJ = 0 ▽FK = 0 ▽FL = 0 ▽FM = 0 ▽FN = 0 ▽FO = 0 ▽FP = 0 ▽FQ = 0 ▽FR = 0 ▽FS = 0 ▽FT = 0 ▽FU = 0 ▽FV = 0 ▽FW = 0 ▽FX = 0 ▽FY = 0 ▽FZ = 0 ▽GA = 0 ▽GB = 0 ▽GC = 0 ▽GD = 0 ▽GE = 0 ▽GF = 0 ▽GG = 0 ▽GH = 0 ▽GI = 0 ▽GJ = 0 ▽GK = 0 ▽GL = 0 ▽GM = 0 ▽GN = 0 ▽GO = 0 ▽GP = 0 ▽GQ = 0 ▽GR = 0 ▽GS = 0 ▽GT = 0 ▽GU = 0 ▽GV = 0 ▽GW = 0 ▽GX = 0 ▽GY = 0 ▽GZ = 0 ▽HA = 0 ▽HB = 0 ▽HC = 0 ▽HD = 0 ▽HE = 0 ▽HF = 0 ▽HG = 0 ▽HH = 0 ▽HI = 0 ▽HJ = 0 ▽HK = 0 ▽HL = 0 ▽HM = 0 ▽HN = 0 ▽HO = 0 ▽HP = 0 ▽HQ = 0 ▽HR = 0 ▽HS = 0 ▽HT = 0 ▽HU = 0 ▽HV = 0 ▽HW = 0 ▽HX = 0 ▽HY = 0 ▽HZ = 0 ▽IA = 0 ▽IB = 0 ▽IC = 0 ▽ID = 0 ▽IE = 0 ▽IF = 0 ▽IG = 0 ▽IH = 0 ▽II = 0 ▽IJ = 0 ▽IK = 0 ▽IL = 0 ▽IM = 0 ▽IN = 0 ▽IO = 0 ▽IP = 0 ▽IQ = 0 ▽IR = 0 ▽IS = 0 ▽IT = 0 ▽IU = 0 ▽IV = 0 ▽IW = 0 ▽IX = 0 ▽IY = 0 ▽IZ = 0 ▽JA = 0 ▽JB = 0 ▽JC = 0 ▽JD = 0 ▽JE = 0 ▽JF = 0 ▽JG = 0 ▽JH = 0 ▽JI = 0 ▽JJ = 0 ▽JK = 0 ▽JL = 0 ▽JM = 0 ▽JN = 0 ▽JO = 0 ▽JP = 0 ▽JQ = 0 ▽JR = 0 ▽JS = 0 ▽JT = 0 ▽JU = 0 ▽JV = 0 ▽JW = 0 ▽JX = 0 ▽JY = 0 ▽JZ = 0 ▽KA = 0 ▽KB = 0 ▽KC = 0 ▽KD = 0 ▽KE = 0 ▽KF = 0 ▽KG = 0 ▽KH = 0 ▽KI = 0 ▽KJ = 0 ▽KK = 0 ▽KL = 0 ▽KM = 0 ▽KN = 0 ▽KO = 0 ▽KP = 0 ▽KQ = 0 ▽KR = 0 ▽KS = 0 ▽KT = 0 ▽KU = 0 ▽KV = 0 ▽KW = 0 ▽KX = 0 ▽KY = 0 ▽KZ = 0 ▽LA = 0 ▽LB = 0 ▽LC = 0 ▽LD = 0 ▽LE = 0 ▽LF = 0 ▽LG = 0 ▽LH = 0 ▽LI = 0 ▽LJ = 0 ▽LK = 0 ▽LL = 0 ▽LM = 0 ▽LN = 0 ▽LO = 0 ▽LP = 0 ▽LQ = 0 ▽LR = 0 ▽LS = 0 ▽LT = 0 ▽LU = 0 ▽LV = 0 ▽LW = 0 ▽LX = 0 ▽LY = 0 ▽LZ = 0 ▽MA = 0 ▽MB = 0 ▽MC = 0 ▽MD = 0 ▽ME = 0 ▽MF = 0 ▽MG = 0 ▽MH = 0 ▽MI = 0 ▽MJ = 0 ▽MK = 0 ▽ML = 0 ▽MN = 0 ▽MO = 0 ▽MP = 0 ▽MQ = 0 ▽MR = 0 ▽MS = 0 ▽MT = 0 ▽MU = 0 ▽MV = 0 ▽MW = 0 ▽MX = 0 ▽MY = 0 ▽MZ = 0 ▽NA = 0 ▽NB = 0 ▽NC = 0 ▽ND = 0 ▽NE = 0 ▽NF = 0 ▽NG = 0 ▽NH = 0 ▽NI = 0 ▽NJ = 0 ▽NK = 0 ▽NL = 0 ▽NM = 0 ▽NN = 0 ▽NO = 0 ▽NP = 0 ▽NQ = 0 ▽NR = 0 ▽NS = 0 ▽NT = 0 ▽NU = 0 ▽NV = 0 ▽NW = 0 ▽NX = 0 ▽NY = 0 ▽NZ = 0 ▽OA = 0 ▽OB = 0 ▽OC = 0 ▽OD = 0 ▽OE = 0 ▽OF = 0 ▽OG = 0 ▽OH = 0 ▽OI = 0 ▽OJ = 0 ▽OK = 0 ▽OL = 0 ▽OM = 0 ▽ON = 0 ▽OO = 0 ▽OP = 0 ▽OQ = 0 ▽OR = 0 ▽OS = 0 ▽OT = 0 ▽OU = 0 ▽OV = 0 ▽OW = 0 ▽OX = 0 ▽OY = 0 ▽OZ = 0 ▽PA = 0 ▽PB = 0 ▽PC = 0 ▽PD = 0 ▽PE = 0 ▽PF = 0 ▽PG = 0 ▽PH = 0 ▽PI = 0 ▽PJ = 0 ▽PK = 0 ▽PL = 0 ▽PM = 0 ▽PN = 0 ▽PO = 0 ▽PP = 0 ▽PQ = 0 ▽PR = 0 ▽PS = 0 ▽PT = 0 ▽PU = 0 ▽PV = 0 ▽PW = 0 ▽PX = 0 ▽PY = 0 ▽PZ = 0 ▽QA = 0 ▽QB = 0 ▽QC = 0 ▽QD = 0 ▽QE = 0 ▽QF = 0 ▽QG = 0 ▽QH = 0 ▽QI = 0 ▽QJ = 0 ▽QK = 0 ▽QL = 0 ▽QM = 0 ▽QN = 0 ▽QO = 0 ▽QP = 0 ▽QQ = 0 ▽QR = 0 ▽QS = 0 ▽QT = 0 ▽QU = 0 ▽QV = 0 ▽QW = 0 ▽QX = 0 ▽QY = 0 ▽QZ = 0 ▽RA = 0 ▽RB = 0 ▽RC = 0 ▽RD = 0 ▽RE = 0 ▽RF = 0 ▽RG = 0 ▽RH = 0 ▽RI = 0 ▽RJ = 0 ▽RK = 0 ▽RL = 0 ▽RM = 0 ▽RN = 0 ▽RO = 0 ▽RP = 0 ▽RQ = 0 ▽RR = 0 ▽RS = 0 ▽RT = 0 ▽RU = 0 ▽RV = 0 ▽RW = 0 ▽RX = 0 ▽RY = 0 ▽RZ = 0 ▽SA = 0 ▽SB = 0 ▽SC = 0 ▽SD = 0 ▽SE = 0 ▽SF = 0 ▽SG = 0 ▽SH = 0 ▽SI = 0 ▽SJ = 0 ▽SK = 0 ▽SL = 0 ▽SM = 0 ▽SN = 0 ▽SO = 0 ▽SP = 0 ▽SQ = 0 ▽SR = 0 ▽SS = 0 ▽ST = 0 ▽SU = 0 ▽SV = 0 ▽SW = 0 ▽SX = 0 ▽SY = 0 ▽SZ = 0 ▽TA = 0 ▽TB = 0 ▽TC = 0 ▽TD = 0 ▽TE = 0 ▽TF = 0 ▽TG = 0 ▽TH = 0 ▽TI = 0 ▽TJ = 0 ▽TK = 0 ▽TL = 0 ▽TM = 0 ▽TN = 0 ▽TO = 0 ▽TP = 0 ▽TQ = 0 ▽TR = 0 ▽TS = 0 ▽TT = 0 ▽TU = 0 ▽TV = 0 ▽TW = 0 ▽TX = 0 ▽TY = 0 ▽TZ = 0 ▽UA = 0 ▽UB = 0 ▽UC = 0 ▽UD = 0 ▽UE = 0 ▽UF = 0 ▽UG = 0 ▽UH = 0 ▽UI = 0 ▽UJ = 0 ▽UK = 0 ▽UL = 0 ▽UM = 0 ▽UN = 0 ▽UO = 0 ▽UP = 0 ▽UQ = 0 ▽UR = 0 ▽US = 0 ▽UT = 0 ▽UU = 0 ▽UV = 0 ▽UW = 0 ▽UX = 0 ▽UY = 0 ▽UZ = 0 ▽VA = 0 ▽VB = 0 ▽VC = 0 ▽VD = 0 ▽VE = 0 ▽VF = 0 ▽VG = 0 ▽VH = 0 ▽VI = 0 ▽VJ = 0 ▽VK = 0 ▽VL = 0 ▽VM = 0 ▽VN = 0 ▽VO = 0 ▽VP = 0 ▽VQ = 0 ▽VR = 0 ▽VS = 0 ▽VT = 0 ▽VU = 0 ▽VV = 0 ▽VW = 0 ▽VX = 0 ▽VY = 0 ▽VZ = 0 ▽WA = 0 ▽WB = 0 ▽WC = 0 ▽WD = 0 ▽WE = 0 ▽WF = 0 ▽WG = 0 ▽WH = 0 ▽WI = 0 ▽WJ = 0 ▽WK = 0 ▽WL = 0 ▽WM = 0 ▽WN = 0 ▽WO = 0 ▽WP = 0 ▽WQ = 0 ▽WR = 0 ▽WS = 0 ▽WT = 0 ▽WU = 0 ▽WV = 0 ▽WW = 0 ▽WX = 0 ▽WY = 0 ▽WZ = 0 ▽XA = 0 ▽XB = 0 ▽XC = 0 ▽XD = 0 ▽XE = 0 ▽XF = 0 ▽XG = 0 ▽XH = 0 ▽XI = 0 ▽XJ = 0 ▽XK = 0 ▽XL = 0 ▽XM = 0 ▽XN = 0 ▽XO = 0 ▽XP = 0 ▽XQ = 0 ▽XR = 0 ▽XS = 0 ▽XT = 0 ▽XU = 0 ▽XV = 0 ▽XW = 0 ▽XX = 0 ▽XY = 0 ▽XZ = 0 ▽YA = 0 ▽YB = 0 ▽YC = 0 ▽YD = 0 ▽YE = 0 ▽YF = 0 ▽YG = 0 ▽YH = 0 ▽YI = 0 ▽YJ = 0 ▽YK = 0 ▽YL = 0 ▽YM = 0 ▽YN = 0 ▽YO = 0 ▽YP = 0 ▽YQ = 0 ▽YR = 0 ▽YS = 0 ▽YT = 0 ▽YU = 0 ▽YV = 0 ▽YW = 0 ▽YX = 0 ▽YY = 0 ▽YZ = 0 ▽ZA = 0 ▽ZB = 0 ▽ZC = 0 ▽ZD = 0 ▽ZE = 0 ▽ZF = 0 ▽ZG = 0 ▽ZH = 0 ▽ZI = 0 ▽ZJ = 0 ▽ZK = 0 ▽ZL = 0 ▽ZM = 0 ▽ZN = 0 ▽ZO = 0 ▽ZP = 0 ▽ZQ = 0 ▽ZR = 0 ▽ZS = 0 ▽ZT = 0 ▽ZU = 0 ▽ZV = 0 ▽ZW = 0 ▽ZX = 0 ▽ZY = 0 ▽ZZ = 0 | EC NO: 170067 DRWN: MUM CHKD: CD REV APPR: GGA | 2017/12/15 2018/04/24 2018/04/24 | MIGRATED TO ECTR | GENERAL TOLERANCES (UNLESS SPECIFIED) | DIMENSION UNITS MM INCH | SCALE MM NTS | DRWN BY ATSEE | DATE 2003/10/23 |  <p>MGRID, SHROUDED HEADER W/SLOT AND STANDOFF, R/A</p> <p>PRODUCT CUSTOMER DRAWING</p> <p>SERIES: 87833 MATERIAL NUMBER: SEE TABLE CUSTOMER: GENERAL MARKET</p> <p>DOCUMENT NUMBER: SD-87833-010 DOC TYPE: PSD DOC PART: 001 SHEET NUMBER: 3 OF 3</p> | |
| | 4 PLACES ± ± | | | | CHK'D BY | DATE | KCLING | 2003/11/07 | | |
| | 3 PLACES ± ± | | | | APPR BY | DATE | MLONG | 2010/11/19 | | |
| | 2 PLACES ± 0.2 ± | | | | ANGULAR TOL = 3.0 | | DRAWING SIZE: A3 | | | |
| | 1 PLACES ± ± | | | | DRAFT WHERE APPLICABLE MUST REMAIN WITHIN DIMENSIONS | | THIRD ANGLE PROJECTION | | | |
| | 0 PLACES ± ± | | | | | | | | | |
| | | | | | | | | | | |
| | | | | | | | | | | |
| | | | | | | | | | | |
| | | | | | | | | | | |

| | | | | |
|----------------|----|--------------|------------|----------|
| RELEASE STATUS | P1 | RELEASE DATE | 2018/04/24 | 12:56:31 |
|----------------|----|--------------|------------|----------|